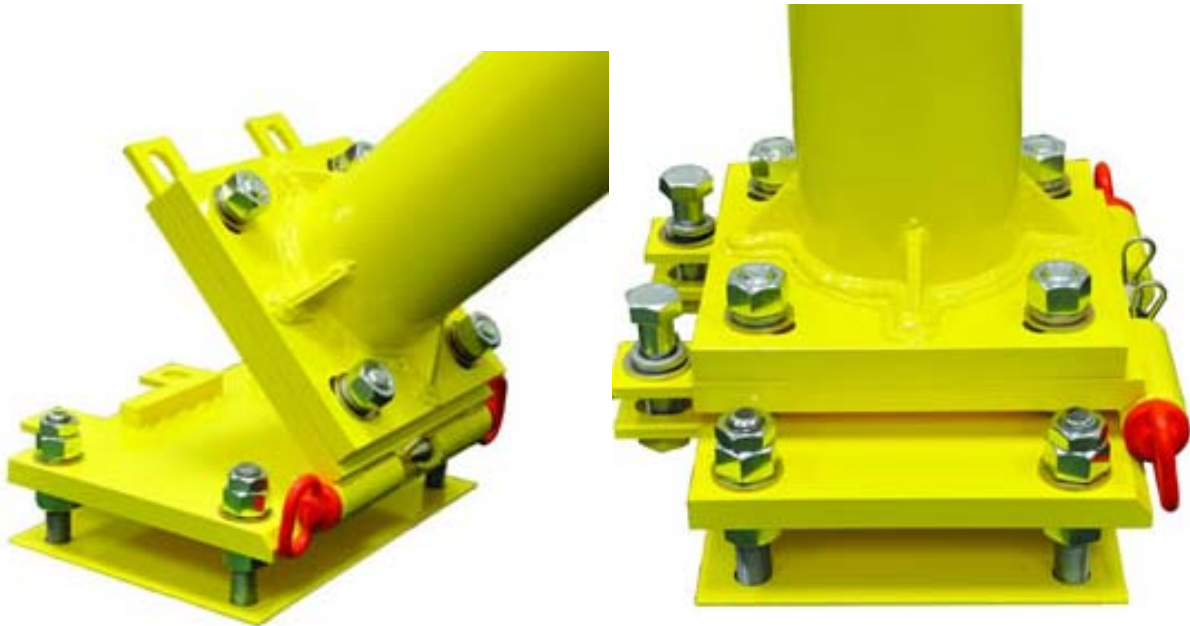


WWW.JAYPRO.COM

MAX-1 FOOTBALL HINGE KIT MODEL FBHG-1



MAX-1 FOOTBALL HINGE KIT MODEL FBHG-1

IMPORTANT: USE THESE INSTRUCTIONS INSTEAD OF THE INSTRUCTIONS WHICH COME WITH THE GOALPOST. THESE INSTRUCTIONS ARE SPECIFICALLY WRITTEN FOR A MAX-1 GOALPOST INCORPORATING A HINGE (FBHG-1).

WARNING: LIFTING WEIGHT OF GOALPOST IS 560 POUNDS.

1. INTRODUCTION

This user guide describes how to install the Jaypro Max-1 football goal post models **FBGP-920, FBGP-930, FBGP-920C, FBGP-930C, FBGP-420, FBGP-430, FBGP-420C and FBGP-430C** with the **FBHG-1** Hinge.

The **MAX-1 GOAL POST HINGE FBHG-1** allows for removal of the goal post or the ability to quickly lower the goal post after a big game. The hinge also allows the goal post to be assembled or disassembled by a maintenance crew from ground level. (The initial installation is done as a traditional install from the ground up in order that the goal posts are level and plum.)

These instructions are written for experienced mechanical contractors, if you need additional information or support to install the hinge and goal post you can reach the Jaypro Sports Customer Support Team Monday through Friday, 8 AM to 5 PM Eastern Time 1-800-243-0533.

IMPORTANT NOTICE

- It is the installer's responsibility to ensure that the goalpost, gooseneck, and crossbar are properly located and lined up with respect to the field. Proper location and alignment should be confirmed with each step.

- It is the installer's responsibility to ensure that the crossbar is level and the uprights are plumb.
 - All critical holes are to be drilled by the installer in an effort to help ensure that all components are square, plumb, and level.

 - Verify after every drilling operation that affected components are still square, plumb, and/or level. Correct as necessary.

 - It is recommended that drilled holes be piloted with a 3/16" drill bit, and opened up incrementally to the final size.

MAX-1 FOOTBALL HINGE KIT MODEL FBHG-1

2. SAFETY

Some of the goal post components are heavy and require at least three people to maneuver into place. To maintain control and prevent injury when moving heavy components, ensure you have a sufficient number of technicians to support the components without dropping them.

3. EQUIPMENT AND MATERIALS

Gather the following user-supplied equipment and materials:

- Equipment to excavate a 72- by 36-inch hole
- 20-foot high scaffold (or scissor lift or boom)
- 10-foot (minimum) high step ladder
- Mechanic's tool set
- Wrench Set
- Level, 3' minimum
- 100-foot tape measure
- Electric Drill
- Drill Bits:
 - 5/16", 1/2", and 5/8" bits
- Rubber mallet

The following equipment is optional, but strongly recommended:

- 17/32", 21/32", and 11/16" transfer punches (highly recommended)
- 3/16", 3/8" drill bits to pilot holes (highly recommended)
- Heavy grease or white lithium grease
- Baling wire (if using rebar)
- (6), 54-inch lengths of 5/8-inch rebar

4. BEFORE YOU START

Read and understand these instructions, they will take you through how to sight the equipment, the footing installation, building the goal post along with safe operating procedures and proper maintenance for years of safe use. While the manufacturer makes every effort to insure that these instructions are complete and correct it is the responsibility of the installer to insure that the goal posts are installed at the proper heights & alignments are confirmed with each step of the installation process.

Initial Installation of the goalpost should be done in the upright position to ensure all holes are properly drilled and the crossbar and uprights are level and plumb. For subsequent removal and re-installation see ADDENDUM A & B.

MAX-1 FOOTBALL HINGE KIT MODEL FBHG-1

5. UNPACKING

1. Unpack all parts and check against the lists to insure that all parts have been included.
2. Inspect for damage. Report any and all damages to the trucking company.

IMPORTANT NOTE: The Hinge Kit contains a footing plate (12" x 17 1/2") which is larger than the standard footing plate (12" x 12") supplied with the goalpost. It is important to note the correct orientation of the larger footing plate. The dimensions of the footing plate are noted in both **Figures 1 and 2. Please discard the 12" x 12" footing plate that is supplied with the goalpost.**

Check Components

While goal posts are sold in pairs hinges are sold separately. Inspect your goal post and hinge shipment and ensure you received these parts

GOAL POST PARTS LIST (pair)

2 Goosenecks
2 Anchor Kits
2 Crossbars
4 Twenty (or thirty)-foot uprights
4 Upright end fittings
4 Wind socks
Yellow spray paint

HINGE PARTS LIST (each)

1 Footing Plates 12" X 17"
1 Lower Hinge Plates
1 Upper Hinge Plates
2 1" OD Hinge Pins

Check Figure 1 and Figure 2 to confirm that you're Goal Post and Hinges have shipped with all hardware. If any hardware or components are missing, contact the Jaypro Sports customer support team, Monday through Friday, 8:00 A.M. to 5:00 P.M. Eastern Time at 1-800-243-0533 for replacements.

MAX-1 FOOTBALL HINGE KIT MODEL FBHG-1

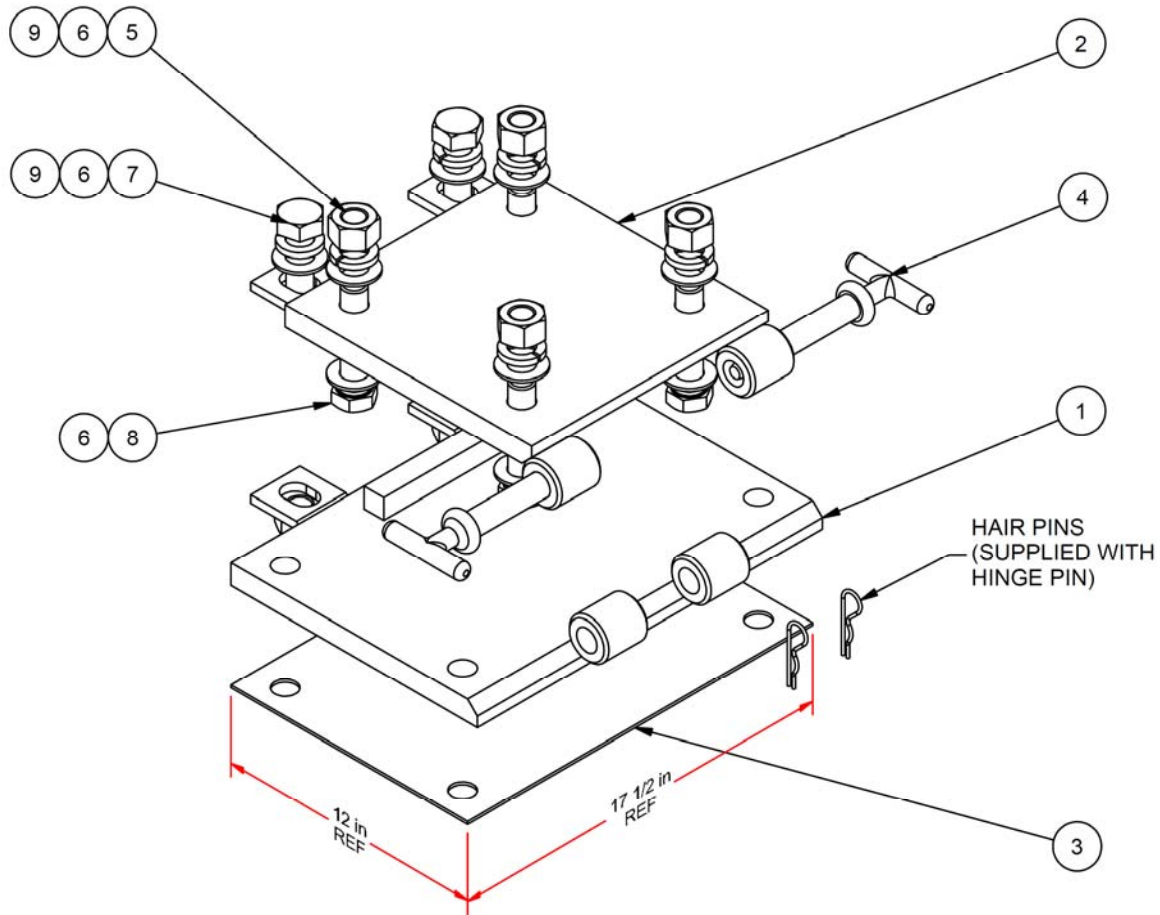
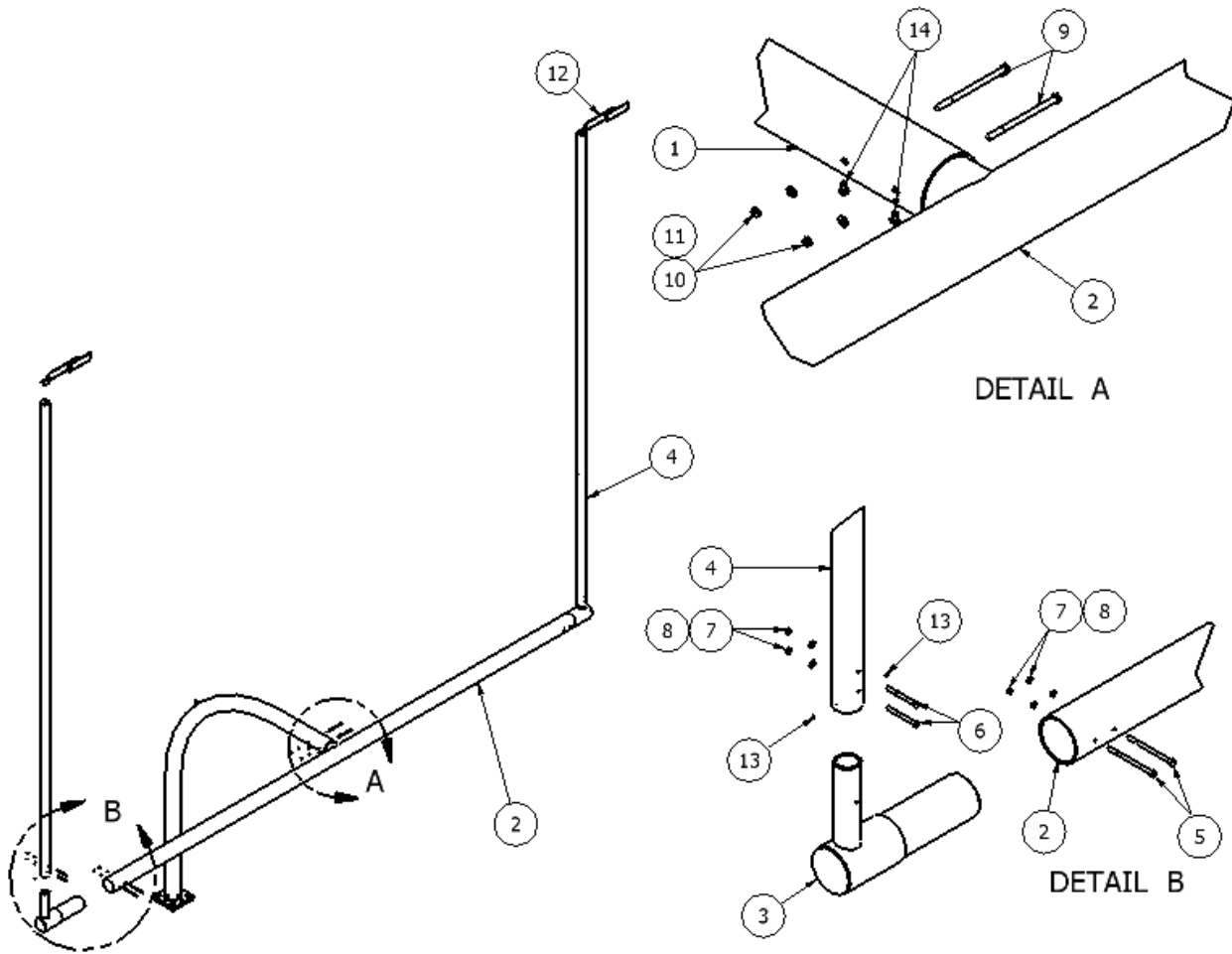


Figure 1

ITEM	QTY	DESCRIPTION	ITEM	QTY	DESCRIPTION
1	1	LOWER HINGE PLATE	6	10	1 in x 2 in FLAT WASHER
2	1	UPPER HINGE PLATE	7	2	1-8 x 3 ¼ HEX BOLT
3	1	FOOTING PLATE	8	4	1-8 x 4 ½ in HEX BOLT
4	2	1 in x 4 ½ in HINGE PIN	9	6	1 in SPLIT LOCK WASHER
5	4	1-8 HEX NUT			

MAX-1 FOOTBALL HINGE KIT MODEL FBHG-1

Figure 2: FBGP-900 or FBGP-400 Included Components and Hardware.



ITEM	QTY	DESCRIPTION	ITEM	QTY	DESCRIPTION
1	1	GOOSENECK 6 5/8 OD	8	8	1/2" FLAT WASHER
2	1	CROSSBAR	9	2	5/8-11 x 7 1/2" LONG HEX HEAD BOLT, ZP
3	2	END FITTING	10	2	5/8 FLAT WASHER
4	2	UPRIGHT	11	2	5/8-11 NYLOCK NUT
5	4	1/2-13 x 8" HEX HEAD BOLT ZP	12	1	STREAMER
6	4	1/2-13 x 5" HEX HEAD BOLT, ZP	13	4	1/4-20 x 1/4" LONG SET SCREW
7	8	1/2-13 NYLON LOCK NUT, ZP	14	2	3/8-16 x 3/4" FLANGE HEX HEAD SELF TAPPING

6. WHERE TO INSTALL THE FOUNDATION AND GOOSENECK

Installing the foundation and anchors in the proper location at each end of the field ensures that the gooseneck, cross bar, and uprights will be positioned according to high school and college football regulations. By rule, the front edge of the crossbar should be even with the inside edge

MAX-1 FOOTBALL HINGE KIT MODEL FBHG-1

(field side) of the end line, such that the crossbars measure 360 ft apart, inside to inside^{1,2}. Follow these steps to locate foundation.

1. From the field layout plan, determine and mark the location of the inside corners of the playing field including the end zone.
2. From the field layout plan or through consultation with the field contractor determine the final field elevation.
3. Using the corners as reference points, mark the points exactly 80 feet in from the inside edge of the sideline and **100-3/8 inches for FBGP 900 Series Goal Posts (82-3/8 inches for FBGP 400 Series)** in from the inside edge of the end zone at each end of the field (**Figure 3**)

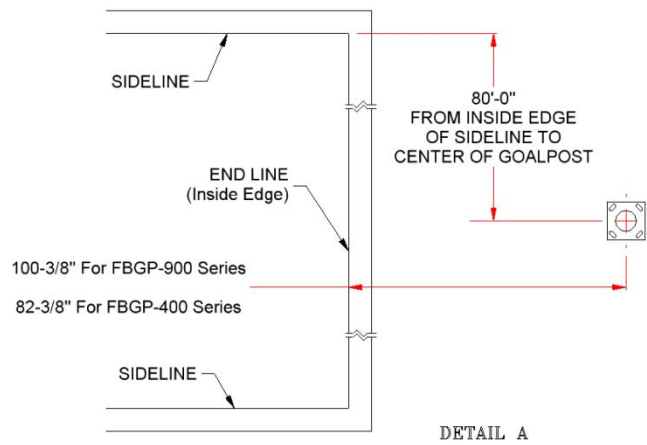
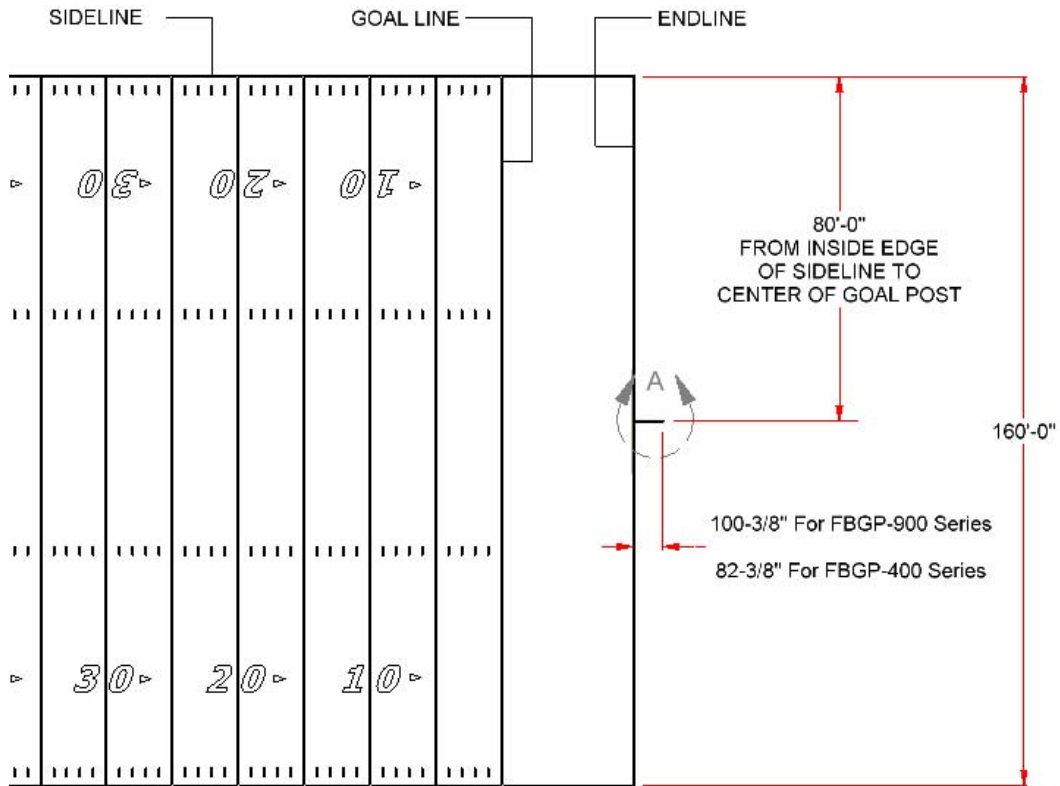
NOTE: The dimensions provided account for the deflection of the gooseneck under the weight of the crossbar and uprights.

¹ NFHS Football Rules Book, 2009

² NCAA Football Rules and Interpretations, 2002

MAX-1 FOOTBALL HINGE KIT MODEL FBHG-1

Figure 3: Location of the Center of the Upright Footing
All measurements from field-side edges of lines.



MAX-1 FOOTBALL HINGE KIT MODEL FBHG-1

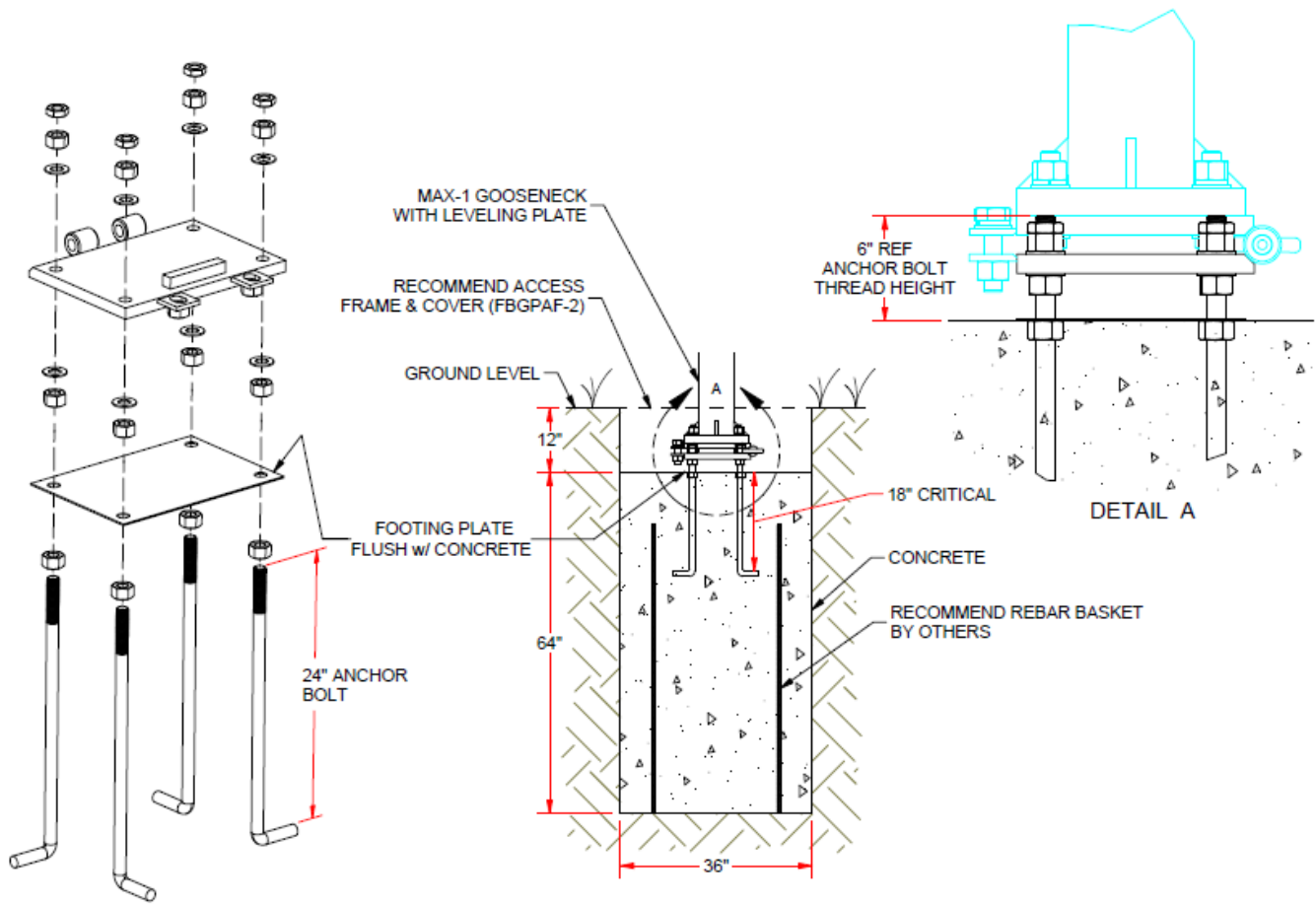


FIGURE 4

See **Figure 1** for footing plate orientation.

Note: Lubricate hinge pins with a light grease such as White Lithium Grease to prevent rusting and help when installing or removing the hinge pins.

7. INSTALLATION STEPS

Follow these steps to install the foundation at each end of the playing field.

1. Excavate the footing hole; as shown in **Figure 3**.
2. While not required, Jaypro recommends using 6 lengths of 5/8-inch rebar, 54 inches long, wired together into a 24-inch diameter basket and placed around the ground sleeve in the footer hole.
3. Assemble and install the anchor kit as shown. NOTE: Use the 12" x 17 1/2" footing plate supplied with the Hinge Kit and note the orientation of the plate. The longer 17 1/2" side is parallel to the endline.
4. Fill the footing hole with 4,000 psi (minimum) concrete to 12 inches below ground level.

MAX-1 FOOTBALL HINGE KIT MODEL FBHG-1

5. Allow the concrete to cure for 48 hours before installing the gooseneck, crossbar and uprights
6. Assemble the rest of the Hinge Kit (**FIGURE 1**) including putting the hairpins in the hinge pins to lock them in position along with all the hardware to keep the hinge closed. The hinge plates should be level in both directions. It is helpful to lubricate the hinge pins with good quality lithium grease before installation.
7. Make sure that **all hinge hardware** has been installed and properly tightened down before installing the gooseneck.

8. INITIAL INSTALLATION OF GOOSENECK

Install gooseneck onto hinge plumb the upright and make perpendicular to field. Note: The Gooseneck will deflect downward approximately 1 ½ inches due to the weight of the crossbar. The goalpost when completely assembled weights 560 pounds. Safe working habits are important, if you don't feel safe in what you are doing stop and find a way that guarantees everyone's safety.

9. INSTALL AND LEVEL THE CROSSBAR

Follow these steps to install and level the crossbar (refer to **Figure 5 Installing and Leveling Crossbar**)

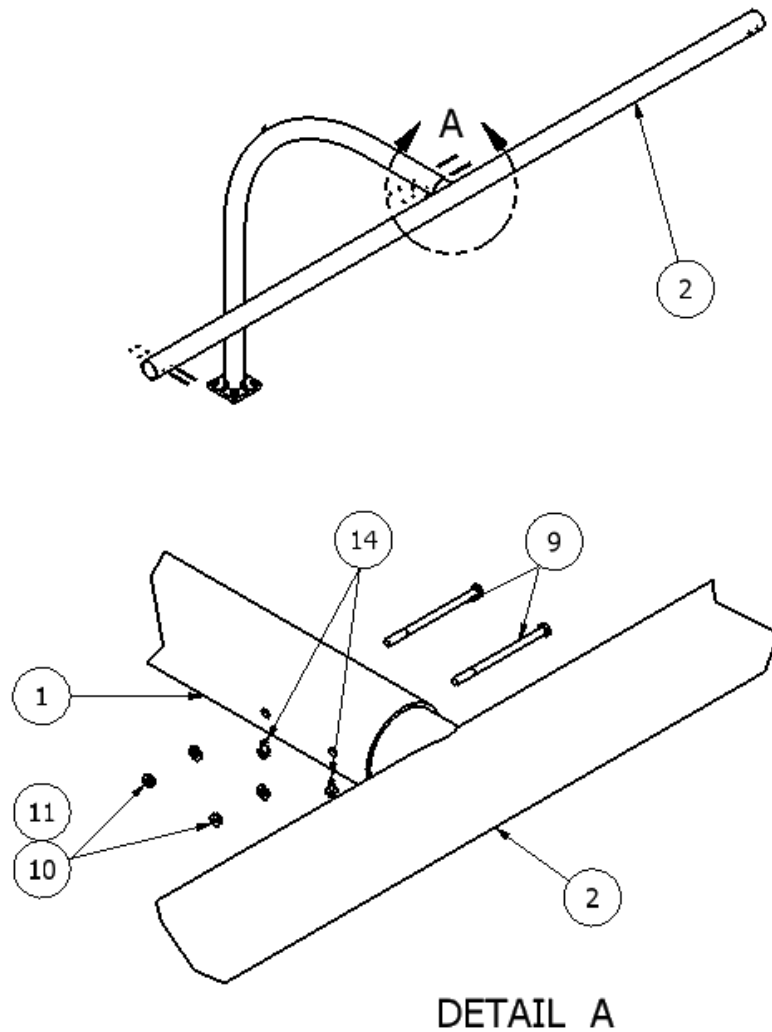
1. Carefully insert the crossbar nipple into the gooseneck.
 - a. Application of lubricant to crossbar and inside of gooseneck is strongly recommended.
2. Set the depth of the crossbar in the gooseneck such that the front edge of the crossbar is aligned with the inside (field side) edge of the end line. See **Figure 3**.
3. Level the crossbar.
 - a. It is recommended that you fasten a level to the crossbar to quickly and easily verify level after each step.
4. Drill a 5/8" hole in crossbar insert using either of the holes in the gooseneck as a guide.
 - a. Use of a 21/32" transfer punch is strongly recommended.
 - b. It is recommended that you pilot the hole with a 3/16" bit, step up to a 3/8" bit and finish with a 5/8" bit.
 - c. To ensure proper alignment of holes, do not try to drill all the way through both faces of crossbar at once. Instead drill from each side of crossbar and check for level after each drilling operation.

MAX-1 FOOTBALL HINGE KIT MODEL FBHG-1

5. Insert a 5/8"-11 x 7.5-inch-long hex head bolt through the hole in the gooseneck and crossbar fitting. Install 5/8-inch washers and 5/8"-11 nuts on the bolts, tighten, and verify the depth and levelness of the crossbar.
6. Drill a second 5/8" hole in the same manner as the first.
7. Verify depth and levelness of crossbar and tighten both nuts as much as possible.
8. Drill two 5/16" holes in the bottom of the gooseneck through the gooseneck and crossbar insert. Drill the holes approximately 3 and 6 1/2-inches from the edge of the gooseneck (where the crossbar inserts).
 - a. Check level of crossbar after each drilling operation. If the crossbar has come out of level, re-level and drill a new hole ~1" away.
9. Thread the 3/8"-16 self-tapping screws into the drilled holes.

MAX-1 FOOTBALL HINGE KIT MODEL FBHG-1

Figure 5: Installing and Leveling the Crossbar



(Quantities Given Per Goal Post)

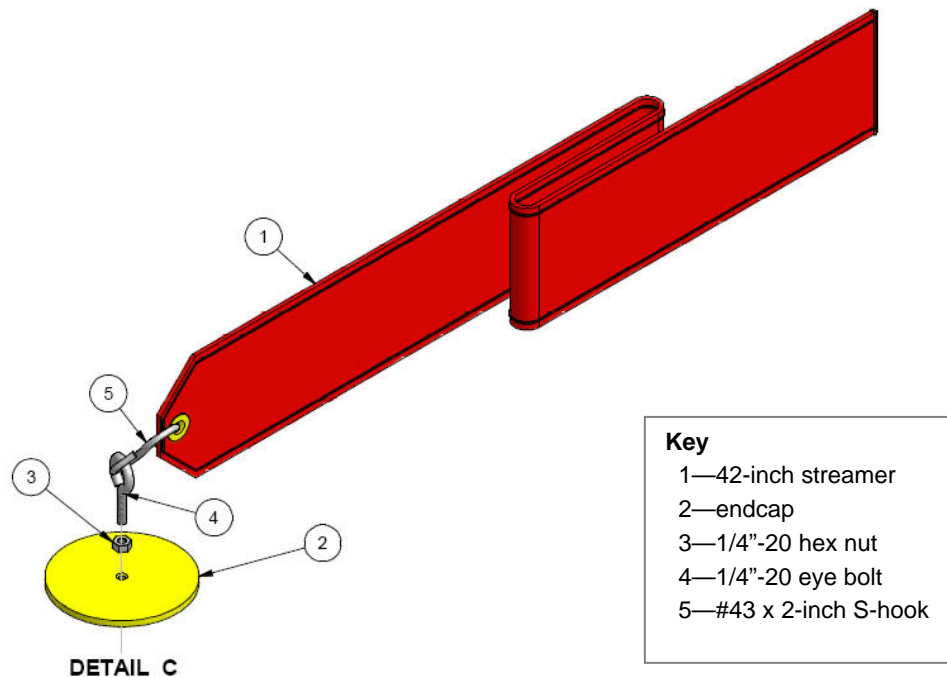
ITEM	QTY	DESCRIPTION
1	1	GOOSENECK 6 5/8 in OD
2	1	CROSSBAR
9	4	5/8-11 x 7 1/2 in LONG HEX HEAD BOLT, ZP
10	2	5/8 FLAT WASHER
11	2	5/8-11 NYLOCK NUT
14	2	3/8-16 x 3/4 in FLANGE HEX HEAD SELF TAPPING SCREW ZP

10. INSTALL THE WIND STREAMERS

Before installing the uprights, install the wind streamer following these steps (see **Figure 6**).

1. Hook one end of the #43, 2-inch S hook into the streamer eyelet and crimp the hook with pliers.
2. Hook the other end of the S hook into the 1/4-20 eye-bolt and crimp the hook with pliers.
3. Thread the 1/4-20 jam nut onto the eye-bolt, and thread the eye-bolt into the upright cap.
4. Tighten the jam nut against the end cap.
5. Repeat the above steps for the other wind streamers.

Figure 6: Installing the Wind Streamers



11. INSTALL THE END FITTINGS & UPRIGHTS

Follow the steps below to install the end fittings and uprights. (See **Figure 7**)

11.1. PRELIMINARY INSTALLATION OF FIRST UPRIGHT AND END FITTING

1. Insert one end fitting into one end of the crossbar.
 - a. It is recommended that you lubricate the end fitting and the inside of the crossbar.
2. Rotate end fitting such that the upright insert is pointing downward at about a 45-degree angle.
3. Lift one upright over the upright insert on the end fitting.
4. Install a 1/2"-13 x 5-inch bolt, a 1/2" washer and 1/2"-13 nut in through the upright and pre-drilled hole in the upright insert.
5. Rotate the end fitting until the upright is vertical.
6. Verify that end fitting is completely inserted into crossbar.
 - a. Use a rubber mallet if necessary to ensure that the end fitting is inserted completely.
7. Plumb the upright/end fitting in two directions: front to back (perpendicular to goal line) and side to side (parallel to goal line).
 - a. Use the two set screws in the upright to adjust and maintain the plumb of the upright in the direction parallel to the goal line (**DO NOT DRILL HOLE IN UPRIGHT INSERT YET**).
8. Drill a 1/2" hole in end fitting using the hole in the crossbar closest to the gooseneck as a guide.
 - a. Use of a 17/32" transfer punch to center hole is strongly recommended.
 - b. It is recommended that you pilot the hole with a 3/16" bit, step up to a 3/8" bit and finish with a 1/2" bit.
 - c. To ensure proper alignment of holes, do not try to drill all the way through both faces of end fitting at once. Instead drill from each side of end fitting and check for plumb after each drilling operation.
9. Insert a 1/2"-13 x 7.5-inch-long hex head bolt through the hole in the crossbar and end fitting. Install two 1/2-inch washers and 1/2"-13 nuts and tighten.

11.2 Installation of Second Upright and End Fitting

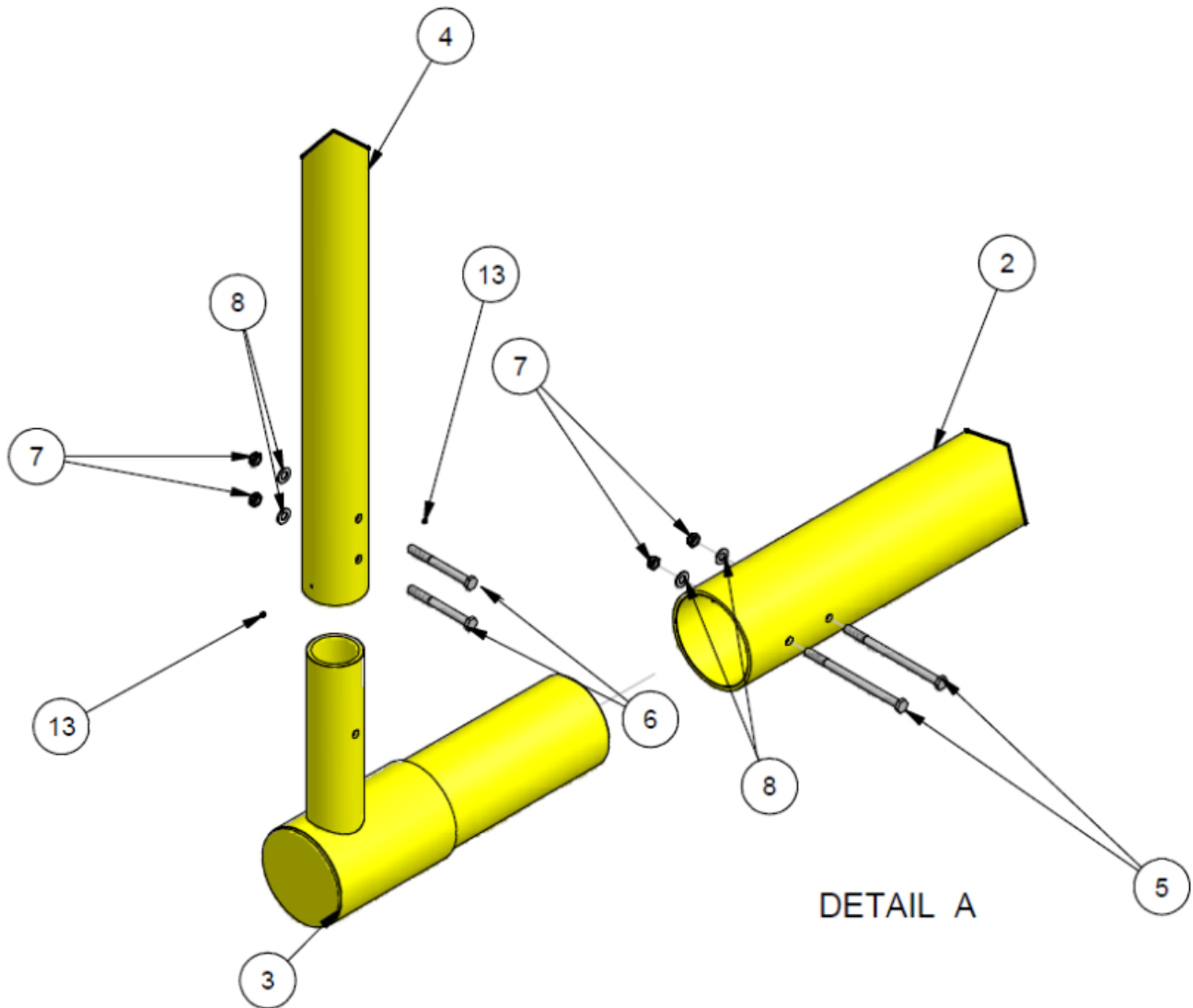
1. Repeat steps 1 through 9 of section 0 above for the other end fitting and upright.
2. Confirm level of crossbar and plumbness of both uprights, adjust as necessary.
3. Drill second hole in end fitting in manner described above, using the other hole in crossbar as a guide.
4. Install 1/2"-13 x 7-1/2" hex bolt, washers, and nut.
5. Confirm level of crossbar and plumbness of both uprights, adjust as necessary.
6. Drill second hole in upright insert in manner described above, using the remaining hole in upright as a guide.
7. Install 1/2"-13 x 5" hex bolt into hole.

11.3 COMPLETE INSTALLATION OF FIRST UPRIGHT AND END FITTING

1. Confirm level of crossbar and plumbness of both uprights, adjust as necessary.
2. Repeat steps 1 through 7 in section 11.2 above for other upright and end fitting.
3. Tighten all bolts in end fittings and uprights as much as possible.

MAX-1 FOOTBALL HINGE KIT MODEL FBHG-1

Figure 7: Installing End Fittings and Uprights



ITEM	QTY	DESCRIPTION
2	1	CROSSBAR
3	2	END FITTING
4	2	UPRIGHT
5	4	1/2-13 x 8" HEX HEAD SCREW, ZP
6	4	1/2-13 x 5" HEX HEAD SCREW, ZP
7	8	1/2-13 NYLOCK NUT ZP
8	8	1/2" FLAT WASHER
13	4	1/4-20 x 1/4" LONG SET SCREW

MAX-1 FOOTBALL HINGE KIT MODEL FBHG-1

ADDENDUM-A LOWERING AND REMOVAL

CAUTION - DUE TO THE WEIGHT (UP TO 560 POUNDS) AND SIZE OF THE GOALPOST, READ UNDERSTAND AND FOLLOW THE PROCEDURES FOR LOWERING AND RAISING THE GOALPOST.

NOTE: GOALPOST MAY BE WINCHED DOWN OR UP WITH THE AID OF A COME-ALONG, A MANUAL OR MOTORIZED WINCH ATTACHING A 1/2 INCH STEEL SCHACKLE TO THE LIFTING TAB WELDED ON THE GOALPOST. BE SURE THAT THE LIFTING CABLE IS A SECURELY ANCHORED AND APPROXIMATELY 15 FEET AWAY FROM THE GOALPOST.

CAUTION SHOULD BE TAKEN WHEN LOWERING OR RAISING THE GOALPOST THAT BY STANDERS ARE NOT UNDER OR NEAR THE GOALPOST AS WELL AS STANDING CLEAR OF THE LIFTING CABLE. LASTLY IF THE LIFTING CABLE SHOWS ANY WEAR IT SHOULD BE REPLACED.

EQUIPMENT AND MATERIALS

9/16, 3/4, 15/16, TWO OF EACH AND ONE 1 1/2 INCH WRENCHES
HEAVY GREASE OR WHITE LITHIUM
RUBBER MALLET
OPTIONAL CENTER PUNCH WITH HAMMER AND PERMANENT MARKER

WARNING: NEVER ATTEMPT TO LOOSEN OR REMOVE THE HARDWARE HOLDING THE HINGE CLOSED UNTIL A SAFETY CABLE IS ATTACHED TO THE LIFTING TAB ON THE GOOSENECK.

LOWERING

1. CLEAR THE SPACE IN FRONT OF THE GOALPOST SO THAT THERE WILL NOT BE ANY OBSTUCTION OR PERSON IN THE GOAL POSTS LANDING ZONE.
2. ATTACH THE CABLE TO THE GOALPOST. APPLY ENOUGH TENSION TO CABLE SO THAT WHEN THE BOLTS HOLDING THE HINGE CLOSED ARE REMOVED THAT THE GOALPOST WILL NOT LUNG FORWARD.
3. REMOVE THE TWO BOLTS KEEPING THE HINGE CLOSED. SEE **FIGURE 1** ITEM 6, 7, AND 9.
4. REMOVE THE HAIRPINS HOLDING THE HINGE PINS IN PLACE.
5. CAREFULLY LOWER THE GOALPOST ALL THE WAY TO THE GROUND WHERE THE CROSSBAR WILL BE SUPPORTED ACROSS IT'S ENTIRE LENGTH, TO AVOID DAMAGING THEM.

MAX-1 FOOTBALL HINGE KIT MODEL FBHG-1

REMOVAL

1. WE SUGGEST THAT BEFORE REMOVING ANY HARDWARE THAT YOU PLACE REGISTRATION MARKS USING A CENTER PUNCH AND HAMMER OR PERMANENT MARKER. THESE MARKS SHOULD BE PLACED AT THE END FITTINGS (ONE MARK ON THE END FITTING AND A SECOND MARK ON THE CROSSBAR) AND WHERE THE CROSSBAR AND GOOSENECK MEET. REMEMBER THIS IS JUST A REGISTRATION MARK. YOU DO NOT WANT TO DEFORM OR DEFACE THE ALUMINUM PIPE MAKING IT DIFFICULT TO REMOVE AND RE-ASSEMBLE PARTS.
2. WITH THE HELP OF AT LEAST ONE HELPER START BY REMOVING ONE END FITTING AND UPRIGHT ASSEMBLY. (**DO NOT REMOVE THE UPRIGHT FROM THE END FITTING**) WITH AT LEAST ONE PERSON HOLDING THE UPRIGHT IN POSITION (ASSEMBLY WEIGHS UP TO 120 POUNDS) REMOVE THE THROUGH BOLTS SECURING THE END FITTING TO THE CROSSBAR. SEE **FIGURE 7** ITEMS 5, 7 AND 8
3. REMOVE THE END FITTING AND REPLACE THE HARDWARD ON EITHER THE CROSSBAR OR THE END FITTING. **BE SURE TO LABEL** THE END FITTING SO THAT THE SAME END FITTING GOES IN THE SAME END OF THE CROSSBAR DURING RE-ASSEMBLY.
4. REPEAT THE PROCESS TO REMOVE THE SECOND END FITTING AND UPRIGHT ASSEMBLY.
5. WITH THE GOALPOST AND CROSSBAR STILL RESTING ON THE GROUND THE CABLE TENSION FROM THE LIFTING CABLE SHOULD STILL BE IN TENSION.
6. REMOVE THE TWO 3/8 in SELF TAPPING SCREWS FROM THE BOTTOM SIDE OF THE GOOSENECK. SEE **FIGURE 5** ITEM 14
7. REMOVE THE THROUGH BOLTS HOLDING THE CROSSBAR AND GOOSENECK TOGETHER. SEE **FIGURE 5** ITEMS 9, 10, AND 11. THE TENSION ON THE LIFTING CABLE MAY HAVE TO BE ADJUSTED IN ORDER TO ALLOW THE BOLTS TO SLIDE OUT EASILY.
8. USING THE WINCH SLOWLY RAISE THE GOOSNECK ENOUGH TO REMOVE THE CROSSBAR FROM THE GOALPOST. IF BOTH OF YOUR GOALPOSTS IN YOUR FACILITY ARE DISASSEMBLED BE SURE TO LABEL EACH TO UNSURE THAT THE SAME CROSSBAR IS USED WITH EACH GOALPOST.
9. MOVE THE CROSSBAR (WEIGHT IS OVER 150 POUNDS) AWAY FROM THE GOALPOST AND LOWER THE GOOSENECK ALL THE WAY DOWN TO THE GROUND. REPLACE THE REMOVED HARDWARE ONTO THE GOOSENECK.
10. IT IS STRONGLY RECOMMENDED THAT THE FINAL STEP OF REMOVING THE HINGE PINS BE DONE BY AT LEAST THREE PEOPLE. (GOOSENECKS CAN WEIGH AS MUCH AS 125 POUNDS)
11. REMOVE THE LIFTING CABLE FROM THE GOOSNECK
12. WHILE TWO WORKES KEEP THE GOAL POST STEADY THE THIRD PERSON PULLS THE PINS. THE GOOSENECK MAY HAVE TO BE LIFTED UP TO TAKE SOME WEIGHT OFF THE HINGE MAKING IT POSSIBLE TO SLIDE THE HINGE PINS OUT.
13. LAY THE GOOSENECK DOWN AND REPLACE THE HINGE PINS' HAIR PINS AND THE TWO BOLTS THAT SECURE THE HINGE WHEN IN PLACE. RE-APPLY GREASE TO THE BOTH HINGE HALFES, THE HINGE PINS AND THE HARDWARE IN ORDER TO PROTECT THEM FROM RUST DURING THE OFF SEASON. AGAIN LABEL THE GOOSENECK FOR FUTURE REFERENCE.
14. INSPECT ALL PARTS FOR UNUSUAL WEAR OF ANY CRACKS. CLEAN AND LUBRICATE ALL MATING PARTS

MAX-1 FOOTBALL HINGE KIT MODEL FBHG-1

ADDENDUM-B RE-ASSEMBLY AND RAISING

RE-ASSEMBLY

1. CLEAN AND INSPECT ALL PARTS FOR WEAR AND CRACKS. DO NOT INSTALL ANY EQUIPMENT THAT MAY POSE AS A DANGER TO THE PUBLIC.
2. CLEAN HINGE BARRELS AND HINGE PINS OF OLD DRIED GREASE AND RE-APPLY FRESH GREASE.
3. LIFT GOOSENECK AND PLACE INTO POSITION. INSTALL HINGE PINS. DUE TO ITS SIZE AND WEIGHT (125 POUNDS) THIS SHOULD NOT BE ATTEMPTED WITHOUT AT LEAST THREE PERSONS. YOU MAY NEED TO LIFT THE GOOSENECK A BIT IN ORDER FOR THE HINGE PINS TO SLIDE IN EASILY.
4. ATTACH A LIFTING CABLE TO THE GOOSENECK AND PUT SOME TENSION ON THE CABLE BUT DO NOT LIFT THE GOOSENECK.
5. MOVE THE CROSSBAR INTO POSITION. AGAIN LUBRICATE THE INSERT AND THE GOOSENECK.
6. RAISE THE GOOSENECK ENOUGH TO SLIDE THE CROSSBAR FORWARD LIFTING THE INSERT TO MATE WITH THE GOOSENECK.
7. LOWER THE GOOSENECK AND ALIGN THE REGISTRATION MARKS YOU MADE BEFORE DISASSEMBLY. BE CAREFULL NOT TO LOWER THE GOOSENECK TOO FAR INTO THE INSERT OR YOU MAY HAVE DIFFICULTY FINE TUNING THE DEPTH OF THE INSERT.
8. INSTALL THE LONG 5/8-11 BOLTS AND NUTS LOOSLY (SEE **FIGURE 5**). THIS MAY TAKE SOME RAISING OR LOWERING ON THE GOOSENECK.
9. INSTALL THE TWO SELF TAPPING SCREWS (SEE **FIGURE 5** ITEM 14) AT THE UNDER SIDE OF THE GOOSENECK. TIGHTEN ALL THE HARDWARE.
10. REINSTALL ONE INSERT AND UPRIGHT ASSEMBLY. BE SURE TO LUBRICATE BOTH THE INSERT AND THE CROSSBAR BEFORE INSERTING. ALIGN THE REGISTRATION MARKS BEFORE TRYING TO REINSTALL THE HARDWARE (SEE **FIGURE 7**). TIGHTEN ALL THE HARDWARE.
11. REINSTALL THE SECOND INSERT AND UPRIGHT ASSEMBLY FOLLOWING THE SAME PROCEDURES AS FOR THE FIRST.
12. CHECK THAT ALL THE HARDWARE HAS BEEN PROPERLY TIGHTENED AND THAT THE GOALPOST IS READY TO BE LIFTED INTO POSITION.
13. WIPE DOWN GOALPOST OF ANY DIRT, FINGER PRINTS OR EXCESS GREASE AND USING THE CAN OF PAINT SUPPLIED WHEN YOU PURCHASED THE EQUIPMENT TOUCH UP ANY SCRATCHES OR CHIPPED PAINT

MAX-1 FOOTBALL HINGE KIT MODEL FBHG-1

RAISING

1. IF THE LIFTING CALBE IS NOT ATTACHED ATTACH IT NOW.
2. CLEAN AND INSPECT THE 1 INCH BOLTS (SEE **FIGURE 1** ITEM 7)AT THE BASE OF THE HINGE..
3. CHECK THAT ALL MOUNTING HARDWARE ON THE GOOSENECK AND FOOTING ARE STILL PROPERLY TIGHTENED.
4. RAISE THE GOALPOST SLOWLY INTO POSITION.
5. INSTALL THE 1 INCH HARDWARE TIGHTEN PROPERLY AND REPLACE THE HAIRPINS ON THE HINGE PINS.
6. ONLY ONCE YOU ARE SURE THAT ALL THE HARDWARE IS IN PLACE AND SECURE SHOULD YOU REMOVE THE LIFTING CABLE.

ADDENDUM-C MAINTENANCE AND INSPECTION

1. BEFORE EACH SEASON CHECK ALL THE HARDWARE ON THE GOALPOST IS PROPELY TIGHTENED.
2. CHECK ALL THE HARDWARE AT THE HINGE IS PROPERLY TIGHTENED AND THAT THE HAIR PINS IN THE HINGE PINS ARE IN PLACE.
3. APPLY GREASE TO ANY EXPOSED RAW STEEL.
4. INSPECT ALL WELDS FOR SIGNS OF STRESS CRACKS.



Jaypro Sports, LLC
976 Hartford Turnpike
Waterford, CT 06385

Phone: 800-243-0533

Phone: 860-337-3001

Sales Fax: 800-444-1779

Engineering Fax: 860-440-0628