

Jaypro Sports

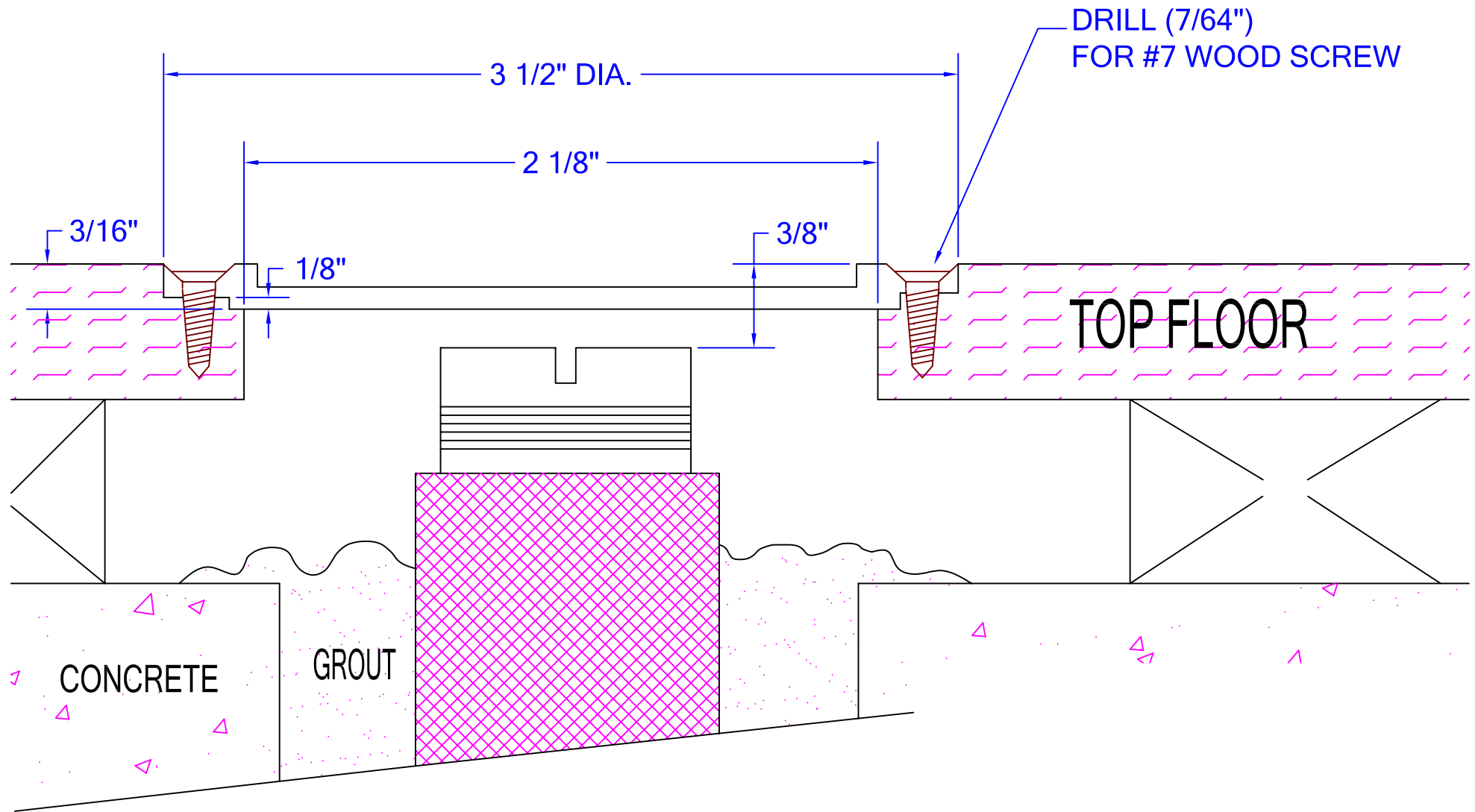
976 Hartford Turnpike
Waterford, CT 06385 USA
(800)243-0533
(800)988-3363 Fax
www.jaypro.com

MODEL NO.:
FP-100

PRODUCT NAME:
FLOOR PLATE

DRAWN BY: JAC

EFFECTIVE DATE:
3-18-05



Jaypro Sports

976 Hartford Turnpike
Waterford, CT 06385 USA
(800)243-0533
(800)988-3363 Fax
www.jaypro.com

MODEL NO.:
FP-100

PRODUCT NAME:
WOOD FLOOR DETAIL

DRAWN BY: JAC EFFECTIVE DATE:
4-18-03

JAYPRO SPORTS

FLOOR PLATE ASSEMBLY-FLOATING FLOOR, FP-100

LIST OF MATERIALS

<u>PIECE NO.</u>	<u>PART NO.</u>	<u>DESCRIPTION</u>	<u>QTY.</u>
1	FAC-101B	COVER PLATE ASSEMBLY	1
2	HS5122	#7-1" FLAT HEAD WOOD SCREW	4
3	HS5062	HEX HEAD BOLT ½"-13 x 5"	1
4		HEX HEAD NUT ½"-13	1
6		FLOOR ANCHOR ASSEMBLY	1
7		EYEBOLT (LIFTING RING) ¼"-20	1

ASSEMBLY INSTRUCTIONS

TOOLS REQUIRED: Hammer Drill

1 3/8" Masonry Drill Bit
Mixing Container & Water
Small Vacuum Cleaner
Stiff Circular Brush (Bottle Brush)
Putty Knife Or Scraper
Rag Or Other Absorbent Material
Regular Power Drill
2 1/8" Wood Hole Saw
7/64" Drill Bit
Router
Screwdriver With Phillips Blade
½" Bolt
¾ lb. (Approx) Non Shrink Anchoring Cement

NOTICE

The fp-100 floor plate assembly is manufactured with a removable center section which can be replaced in the event that the internal threads are damaged. Upon original installation of the floor plates or replacement of the threaded sections, be sure that the replacement threaded sections are installed very tightly using a thread-locking sealant to prevent easy removal or tampering.

PLEASE READ INSTRUCTIONS IN THEIR ENTIRETY BEFORE BEGINNING INSTALLATION

- 1) Locate and mark the center locations of the floor plates using the layout diagram in the equipment instruction sheet. Re-check all the center locations for accuracy before installing the floor plates.
- 2) Using the 2 1/8" wood hole saw, drill a hole in the wood floor and the wood sub-floor down to the concrete base as shown in the wood floor detail.
- 3) Screw the ½" bolt with the nut into the bottom of the floor plate. Adjust the bolts so it will reach ½" x ¼" from the bottom of the hole when the floor plate is in place. Tighten the nut against the floor plate bottom to lock the bolt into place. In some cases the bolt supplied with the fp-100 unit will not reach to

the bottom of the hole in the cement. If this happens, a longer bolt or threaded rod should be used to insure reaching the bottom.

- 4) Next, completely remove the dust from the hole by using a vacuum cleaner, air compressor, or battery filler.
- 5) Fill the hole with water. Scrub the sides and bottom with a stiff brush, such as a bottle brush. This is very important.
- 6) Remove excess water and any loose particles with a rag or other absorbent material. Leave the hole clean and uniformly damp.
- 7) Mix the anchor bolt cement in a clean container.
Note: See manufacturers instructions for proper use.
Do not add sand, gravel, or other foreign substances to the cement. These weaken the cement and affect the setting.
Do not add too much water or re-temper cement, which has begun to set up in the container, with additional water. This will result in failure of the cement to attain the proper strength.
- 8) Turn a 1/2" bolt into the floor plate enough to hold it securely. Pour the cement mixture into the hole until it is about 3/4" fill. Dip the floor plate in water in order to wet the outer surface, but do not let any water get inside. Holding the floor plate by the top 1/2" bolt, slowly lower it into the hole until the top is 3/8" below the surface of the floor. Excess cement should flow around the top. If not, more cement should be added. Scrape the excess cement from around the floor plate with a putty knife or scraper. Remove the 1/2" bolt.
- 9) Trace an outline of the top cover plate centered over the floor anchor assembly opening. Using the wood router, cut the recessed lip into the floor to the dimensions shown in the wood floor detail. Drill the 4 pilot holes with a 7/64" drill bit and install the cover plate.
- 10) Allow 24 hours from the time of installation for complete setting. After 24 hours, apparatus may be set up and used with the floor plates.