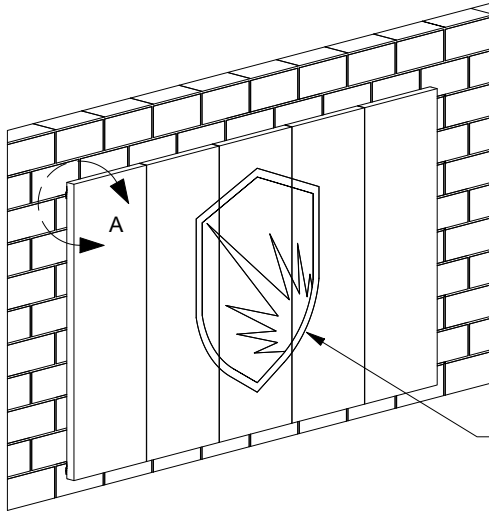


JWP-I WallGuard High Impact Flat Wall Padding

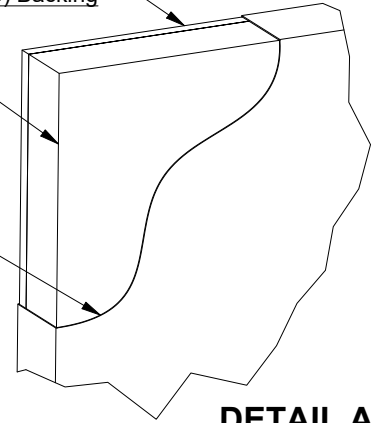


7/16" Oriented Stand Board (OSB) Backing

2" or 3" Thick High Impact Foam Permanently adhered to backer board.

14 or 18 oz Fire Retardant Vinyl (Specify Color)
 Wrapped around OSB backer and secured with steel staples. Vinyl washable, resistant to fade, rot, mildew, and fungus.

Lettering & Graphics
 Digitally printed custom lettering or graphics available.



DETAIL A

CERTIFICATION: Manufacturer must be able to provide independent lab and test reports to verify full compliance with padding standard and specification.

ASTM F2440
 Pad assembly meets or exceeds ASTM F2440 for impact rated wall padding.

MOUNTING OPTION DESCRIPTIONS:

TYPE A: 1" LIPS TOP & BOTTOM
 Pad includes 1" nailing margins on the top and bottom edge for easy anchoring. Wall anchors specified and supplied by others.

TYPE B: Z-CLIP TOP & 1" LIP BOTTOM
 Pad includes 1" nailing margin on the bottom edge only. Top of pad attached with concealed z-clip for a cleaner looking installation. Wall anchors specified and supplied by others.

TYPE C: Z-CLIP TOP & BOTTOM
 Top and bottom of pad attached with concealed z-clips for cleanest looking installation. Wall anchors specified and supplied by others.

MOUNTING OPTIONS

TYPE A:

1" LIPS TOP & BOTTOM



TYPE B:

Z-CLIP TOP & 1" LIP BOTTOM



TYPE C:

Z-CLIP TOP & BOTTOM



TYPE	SIZE	FOAM HEIGHT	OSB HEIGHT	STANDARD PAD 14 OZ VINYL / 2" FOAM	GRAPHICS PAD 14 OZ VINYL / 2" FOAM
A	2' W X 6' H	70"	72"	JWP-I-26	JWP-I-26-G
A	2' W X 7' H	82"	84"	JWP-I-27	JWP-I-27-G
A	2' W X 8' H	94"	96"	JWP-I-28	JWP-I-28-G
B	2' W X 6' H	70"	71"	JWP-I-26Z	JWP-I-26Z-G
B	2' W X 7' H	82"	83"	JWP-I-27Z	JWP-I-27Z-G
B	2' W X 8' H	94"	95"	JWP-I-28Z	JWP-I-28Z-G
C	2' W X 6' H	70"	70"	JWP-I-26ZZ	JWP-I-26ZZ-G
C	2' W X 7' H	82"	82"	JWP-I-27ZZ	JWP-I-27ZZ-G
C	2' W X 8' H	94"	94"	JWP-I-28ZZ	JWP-I-28ZZ-G

OTHER (SPECIFY CUSTOM SIZE OR REQUIREMENTS):

14 OR 18 OZ VINYL COLOR OPTIONS



SPECIFY FOAM THICKNESS

2" FOAM 3" FOAM

PROJECT: _____

DEALER: _____

ORDER NO: _____ DATE: _____



HIGH IMPACT
 WOOD BACKED HIGH IMPACT
 FLAT WALL PADDING

© COPYRIGHT 2021 JAYPRO SPORTS, LLC. ALL RIGHTS RESERVED THIS PRINT IS THE PROPERTY OF JAYPRO SPORTS, LLC. AND MAY NOT BE REPRODUCED WITHOUT WRITTEN PERMISSION

www.jaypro.com
 (800) 243-0533
 976 Hartford Turnpike
 Waterford, CT 06385 USA

Rev: A 4/15/21

SHEET 1 OF 1