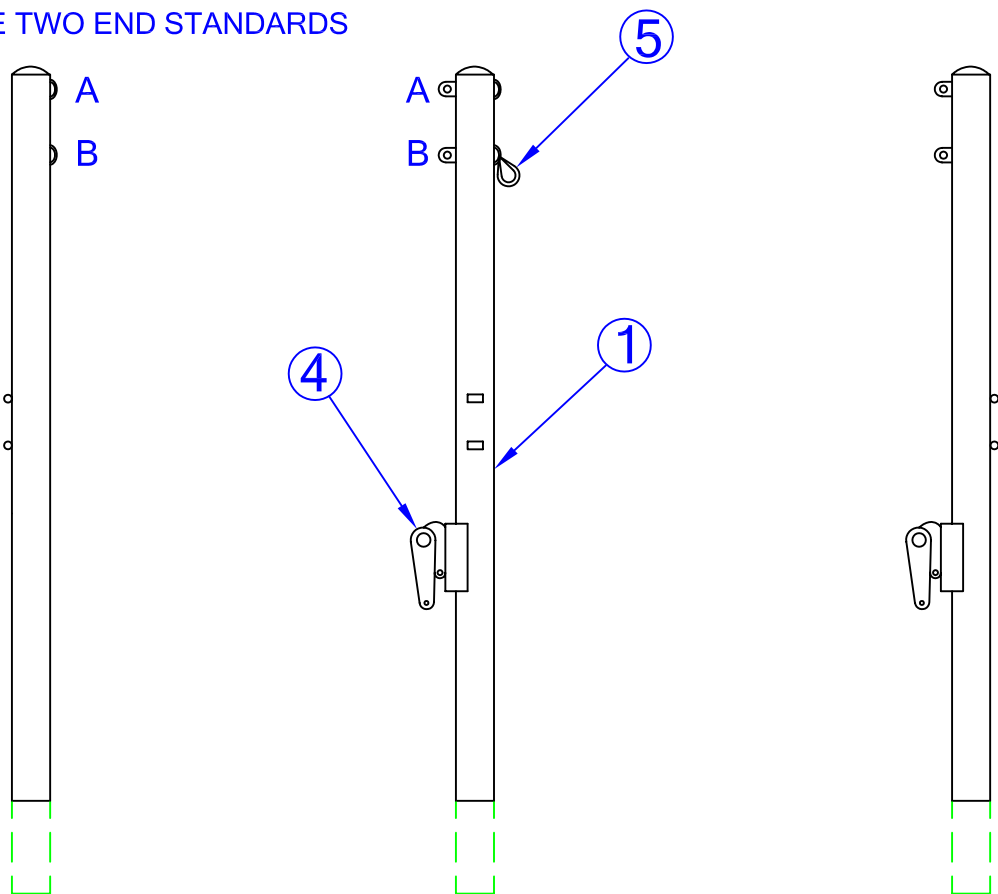


IMPORTANT

THE SIDE BY SIDE SYSTEMS MUST BE TENSIONED SIMULTANEOUSLY TO PREVENT OVERLOADING THE TWO END STANDARDS

USE POSITION 'A' FOR OFFICAL MEN'S HEIGHT
 USE POSITION 'B' FOR OFFICAL WOMEN'S HEIGHT



SEE FLOOR SLEEVE INSTALLATION INSTRUCTIONS

PLEASE NOTE:

- 1) FOR SAFE OPERATION AND CONTINUED HIGH PERFORMANCE FROM THIS EQUIPMENT, INSPECTION AND MAINTENANCE MUST BE PERFORMED BEFORE EACH USE
- 2) USE OF THIS EQUIPMENT OTHER THAN INTENDED, MAY BE HAZARDOUS.
- 3) ALTERATION OR MODIFICATION OF EQUIPMENT MAY BE HAZARDOUS. FOR REPAIR OR REPLACEMENT, PLEASE CALL YOUR DEALER

LIST OF MATERIALS

OUTDOOR VOLLEYBALL CENTER STANDARD

| PIECE NO. | PART NO. | DESCRIPTION | QTY. |
|-----------|----------|------------------|------|
| 1 | OCV900C | CENTER UPRIGHT | 1 |
| 2 | PVB101A | LEADER STRAP | 1 |
| 4 | HM5054 | 5/16" SNAP HOOK | 1 |
| 5 | HM5044 | TOP CABLE BUCKLE | 1 |

Jaypro Sports

976 Hartford Turnpike
 Waterford, CT 06385 USA
 (800)243-0533
 (800)988-3363 Fax
 www.jaypro.com

MODEL NO.:

OCV-900C

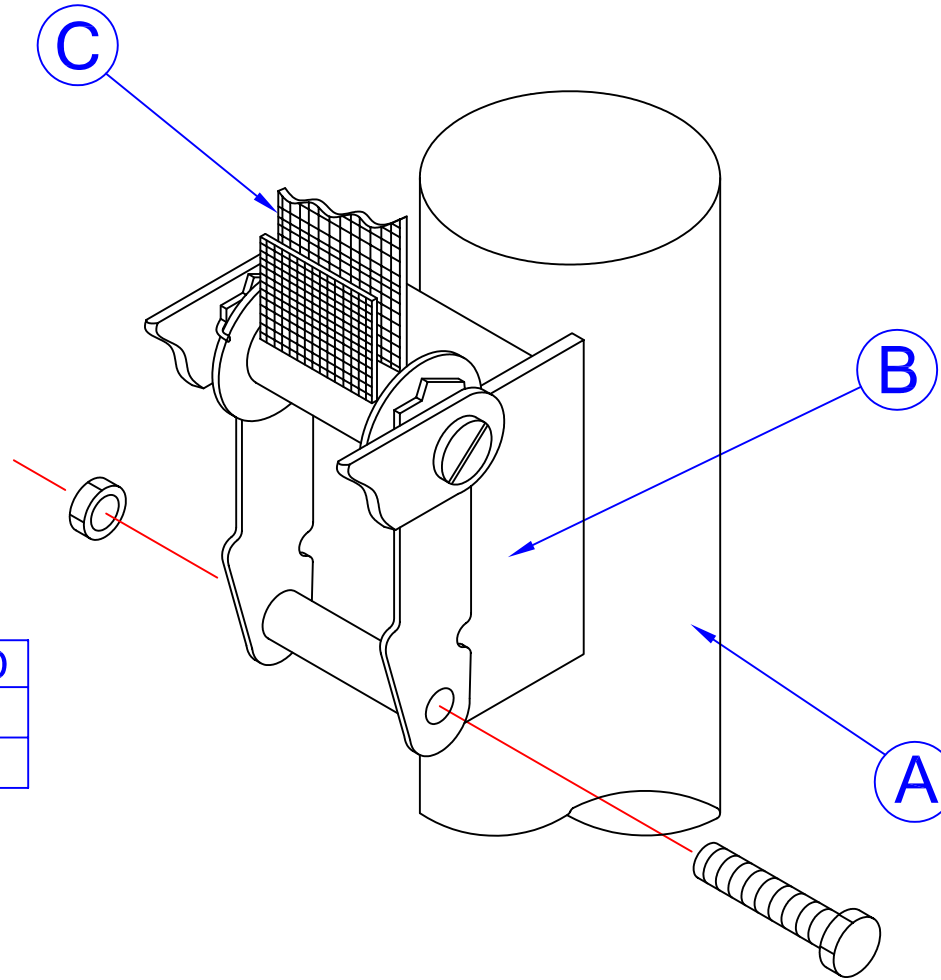
PRODUCT NAME:
OUTDOOR VOLLEYBALL CENTER STANDARD

DRAWN BY: JAC

EFFECTIVE DATE:
5-2-03

LARGE BUCKLE

NOTE:
HEX HEAD SCREW
LOCKS UNDER PIN
ON MOUNTING
BRACKET.



| | |
|---|---------------------|
| A | VOLLEYBALL STANDARD |
| B | BUCKLE |
| C | LEADER STRAP |

BUCKLE ASSEMBLY INSTRUCTIONS

REMOVE NUT AND BOLT ASSEMBLY FROM BUCKLE (B). SLIDE BUCKLE UNDER TAB ON MOUNTING BRACKET (A). POSITION BUCKLE, INSERT BOLT AND REPLACE NUT. TIGHTEN SECURELY.

Jaypro Sports

976 Hartford Turnpike
Waterford, CT 06385 USA
(800)243-0533
(800)988-3363 Fax
www.jaypro.com

MODEL NO.:

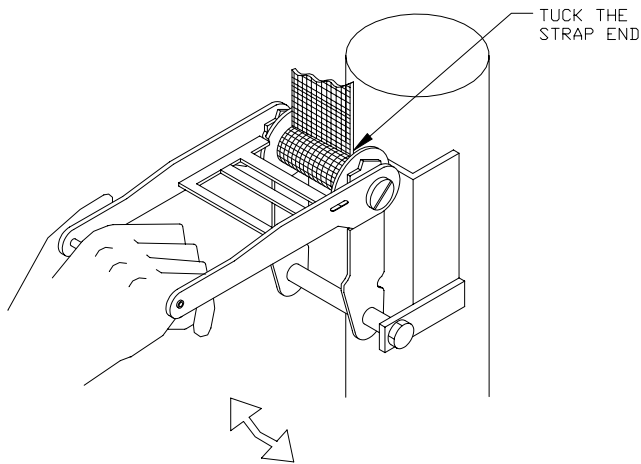
PRODUCT NAME:
BUCKLE ASSEMBLY

DRAWN BY: JAC

EFFECTIVE DATE:
3-31-03

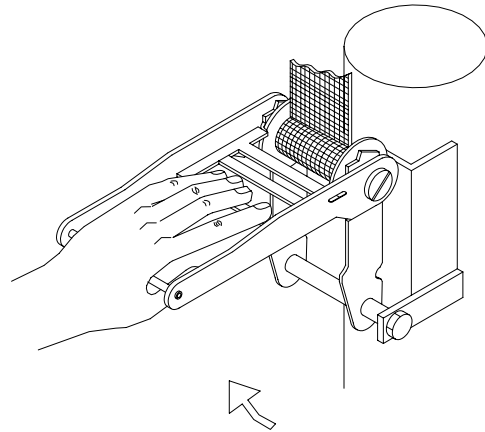
TO APPLY NET TENSION:

FEED THE LEADER STRAP THRU THE SLOT IN THE BUCKLE SHAFT AND TUCK THE END AS SHOWN. GENTLY CRANK THE HANDLE UP AND DOWN TO TENSION THE NET.



TO RELEASE NET TENSION:

HOLD BUCKLE HANDLE AS ILLUSTRATED, GRASP AND PULL THE LOCK RELEASE BAR AND RAISE THE HANDLE TO THE FULL UPWARD POSITION TO RELEASE THE TENSION.



HOW TO PROPERLY USE THE NET TENSIONING BUCKLE

THIS POWER VOLLEYBALL SYSTEM IS EQUIPPED WITH A TENSION BUCKLE PREMOUNTED ON ONE OF THE UPRIGHTS. THE BUCKLE IS USED TO APPLY TENSION TO THE TOP CABLE OF THE NET.

TO APPLY NET TENSION:

FEED THE LEADER STRAP DOWN THRU THE HORIZONTAL SLOT IN THE SHAFT OF THE BUCKLE. WRAP THE STRAP HALFWAY AROUND THE SHAFT AND TUCK THE END BETWEEN THE SHAFT AND THE STRAP TO HOLD IT IN PLACE. CRANK THE HANDLE UP AND DOWN A FEW TIMES UNTIL THE STRAP IS SECURELY WRAPPED AROUND THE SHAFT OF THE BUCKLE (APPROXIMATELY 1 ½ TO 2 REVOLUTIONS). NOTE THAT THE BUCKLE TENSIONS ON THE UP-STROKE ONLY: NOT THE DOWN-STROKE.

TO RELEASE NET TENSION:

HOLD THE BUCKLE HANDLE AS SHOWN IN THE ILLUSTRATION TO THE RIGHT, GRASP THE LOCK RELEASE BAR WITH YOUR FINGERS, PULL THE BAR TOWARD YOUR HAND AND CRANK THE HANDLE TO ITS UPPERMOST POSITION (STRAIGHT UP AND DOWN). **CAUTION!! WHEN THE TENSION RELEASES, THE LEADER STRAP AND THE VOLLEYBALL NET WILL SUDDENLY COLLAPSE. ALTHOUGH THE NOISE AND MOTION ASSOCIATED WITH THE RELEASE OF THE TENSION MAY BE SURPRISING AT FIRST, IT POSES NO DANGER TO THE USER.**