



*"WHEN THE GAME IS ON THE LINE"*

# PVB-TRI-COURT ADAPTER KIT

---

PVB-35TCA

JAYPRO SPORTS PHONE 800-243-0533 FAX 800-444-1779

[www.jaypro.com](http://www.jaypro.com)

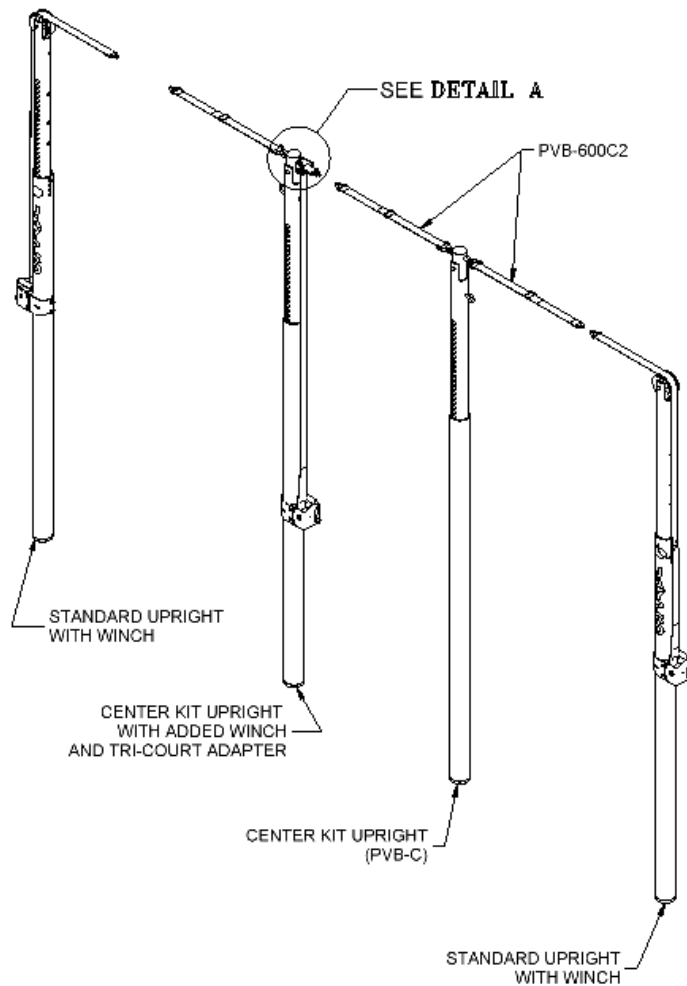
## The TRI-COURT

A Tri-Court set up is possible with the purchase of our Tri-Court Adapter (PVB-35TCA) along with a regular single court system, and two (2) PVB Center Packages. Any and all of these parts are available through your dealer or by contacting Jaypro Sports directly at 800-243-0533 and on the web at [www.jaypro.com](http://www.jaypro.com). Our sales staff will be happy to assist you and make sure that you have everything you need to set up a complete Tri-Court. Jaypro equipment is produced to high standards to give you years of safe play.

See instructions PVB-CENTER PACKAGE for information on how to assemble the center court adapter.

## IMPORTANT

The side by side systems must be tensioned simultaneously to prevent over tensioning the end standards.

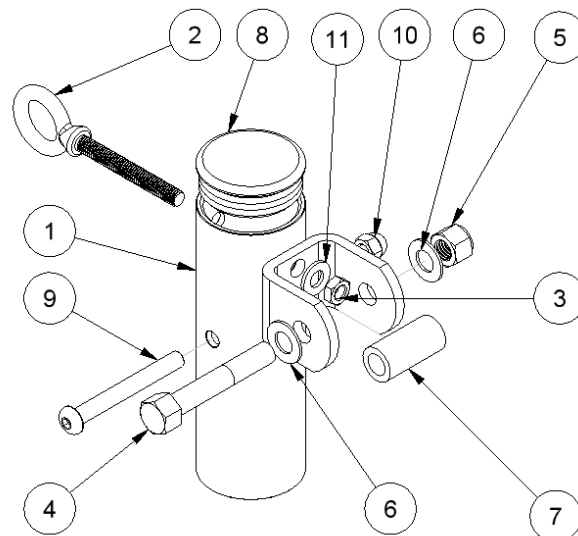


## ASSEMBLY

1. Read and understand the assembly instructions before actually starting any assembly.
2. Refer to the PVB-CENTER PACKAGE INSTRUCTIONS to assemble the Center Uprights.
3. Assemble the Tri-Court Adapter (PVB-35TCA) as shown in Detail A. The Tri-Court Adapter replaces the Center Adapter on the second upright where the third Winch is located.

## SAFETY

1. FOR SAFE OPERATION AND CONTINUED HIGH PERFORMANCE FROM THIS EQUIPMENT, INSPECTION AND MAINTENANCE MUST BE PERFORMED BEFORE EACH USE.
2. USE OF THE EQUIPMENT OTHER THAN INTENDED, MAY BE HAZARDOUS.
3. ALTERATIONS OR MODIFICATION OF EQUIPMENT MAY BE HAZERDOUS. FOR REPAIR OR REPLACEMENT, PLEASE CALL YOUR DEALER.

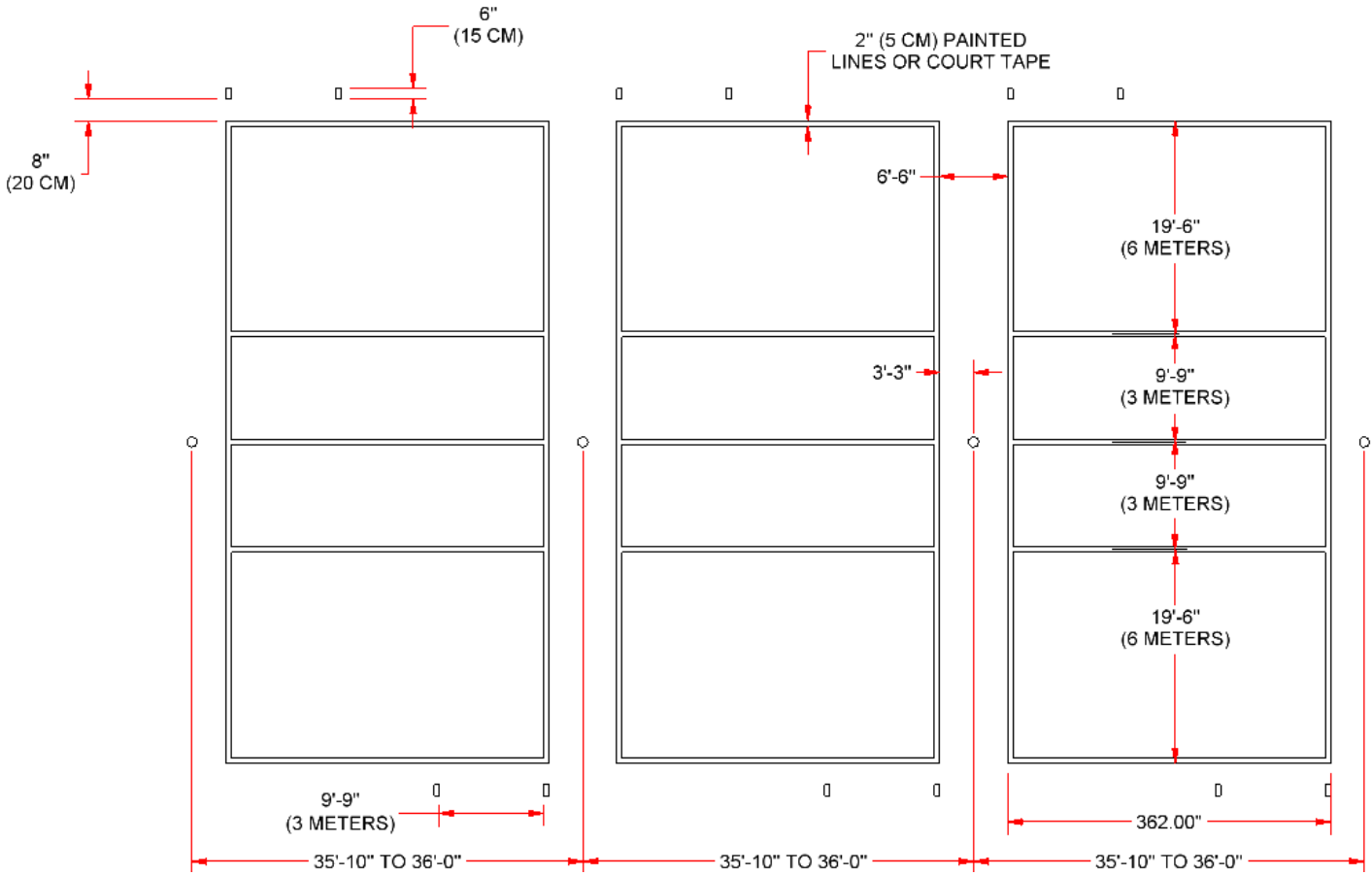


DETAIL A  
**TRI-COURT ADAPTER**  
 (USE IN PLACE OF CENTER ADAPTER)

ITEM	QTY	DESCRIPTION
1	1	TRI-COURT ADAPTER
2	1	EYEBOLT 3/8-16 x 3 in
3	1	3/8-16 NYLOCK NUT
4	1	1/2 – 13 x 3 HEX HD SCREW
5	1	1/2-13 NYLOCK NUT

6	2	1/2 in WASHER
7	1	ROLLER
8	1	CAP
9	1	3/8-16 x 3 ¼ BUTTON HD SCREW
10	1	3/8-16 ACORN NUT
11	1	3/8 FLAT WASHER

# TRI-COURT LAYOUT



COURT DIMENSIONS SHOWN COMPLY WITH SPECIFICATIONS FOR:

U.S.V.B.A

F.I.V.A.

N.C.A.A.

COURT SIZE SPECIFICATIONS FOR THE N.F.S.H.S.A. ARE 30' W x 60'L

CENTER LINE TO BE 4" WIDE

SPIKE LINE TO BE 10' FROM CENTER LINE

SERVING AREA TO BE 10' LONG