

ALL ALUMINUM WEBBED SHOT/HAMER RING INSTALLATION

THE SHOT/HAMMER RING IS MANUFACTURED IN TWO PIECES THAT IS DESIGNED TO BE BOLTED TOGETHER BEFORE INSTALLATION INTO CONCRETE TO FORM A 3/4" DEEP DEPRESSED THROWING SURFACE PAD.

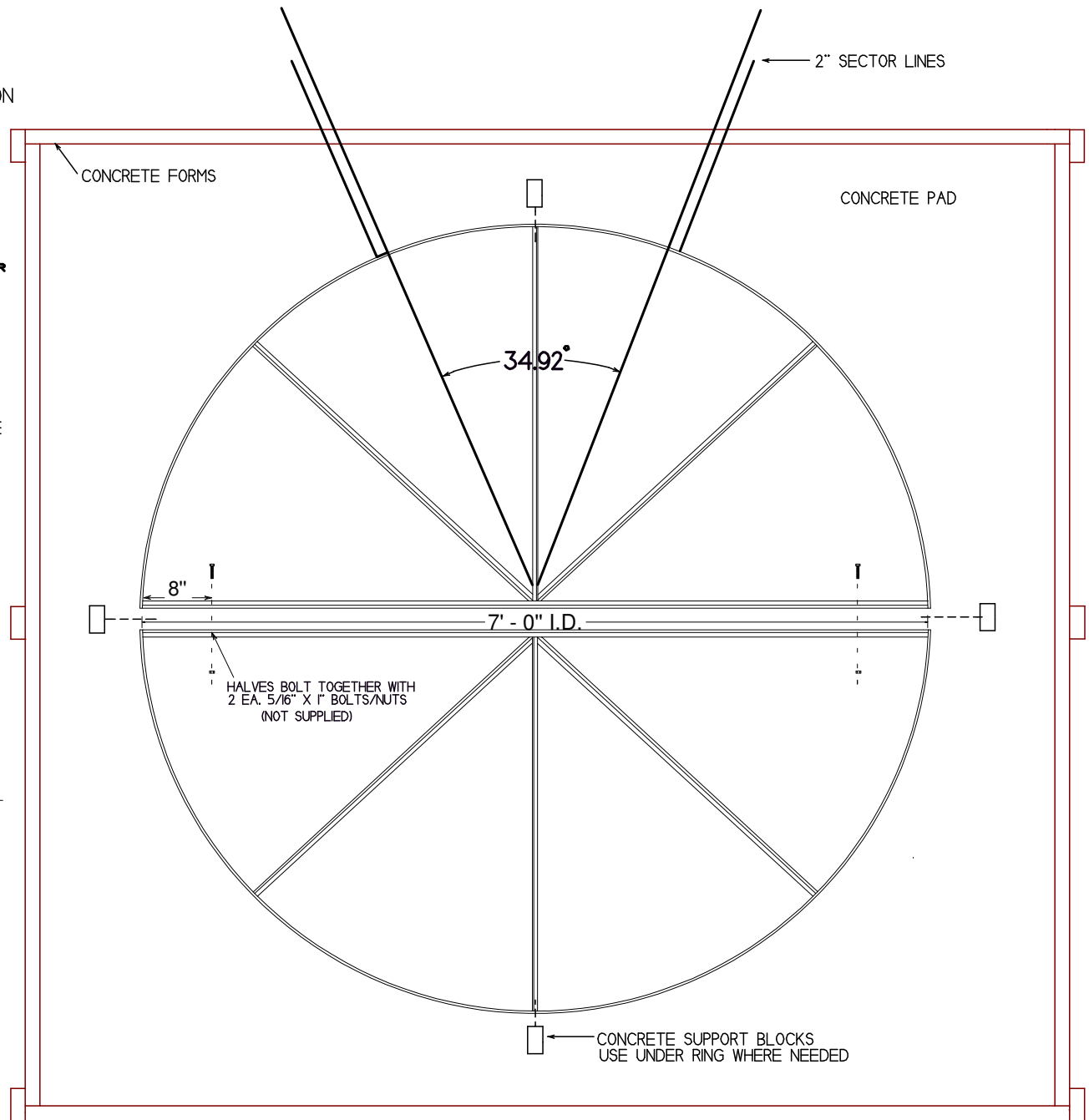
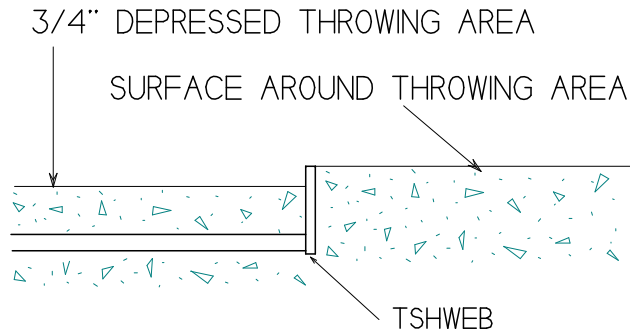
NOTE: WE RECOMMEND INSTALLATION BE DONE BY A QUALIFIED CONTRACTOR, FAMILIAR WITH ALL CODES, LAWS, REGULATIONS, AND TRACK AND FIELD CONSTRUCTION.

CONSTRUCT FORMS AND BLOCK RING TO BRING IT TO THE PROPER HEIGHT:

OUTSIDE-TOP EDGE OF RING - TO BE FLUSH WITH THE FINISHED SURFACE.

INSIDE OF RING - TO BE 3/4" BELOW TOP OF RING. NOTE: TRACK AND FIELD RULES STATE THAT THE THROWING SURFACE AND THE LANDING AREA TO BE ON THE SAME LEVEL.

LOCATE PAD AND RING AT THE PROPER PLACE ON THE TRACK, BY MARKING THE REQUIRED SECTOR LINES.



www.stackhouseathletic.com

STACKHOUSE
athletic equipment

Phone: (503) 363-1840 Toll Free: (800) 285-3604
Fax: (503) 363-0511 www.stackhouseathletic.com

ALL ALUMINUM WEBBED SHOT/HAMMER RING
INSTALLATION DRAWING

PAGE 1 of 2

PRODUCT CODE: TSHWEB

DATE: 12-08

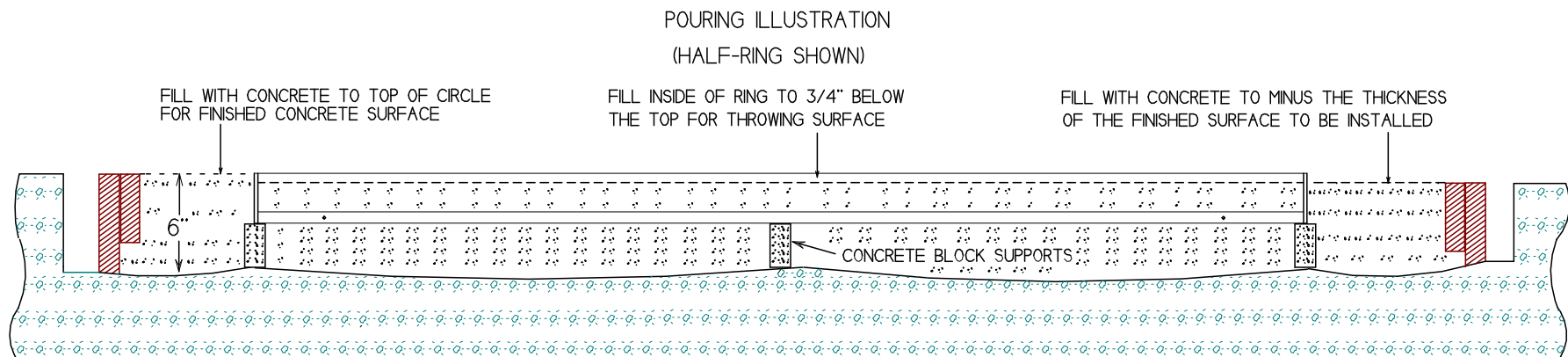
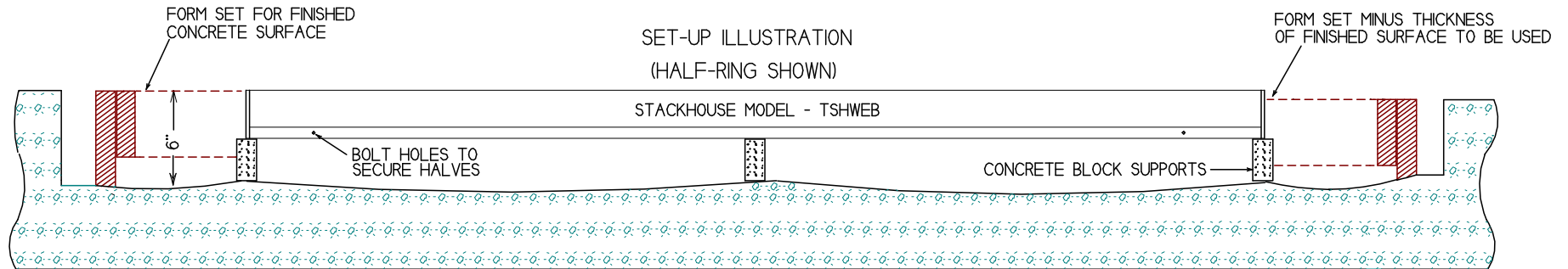
DRAWN BY: S.L.

DWG: TSHWEB INST PGI-REV-08

ALL ALUMINUM WEBBED SHOT/HAMMER RING

INSTALLATION INSTRUCTIONS

1. DRAWINGS ARE FOR ILLUSTRATION PURPOSES AND RECOMMENDED INSTALLATION PROCEDURES. WE RECOMMEND ALL INSTALLATIONS BE DONE BY A QUALIFIED CONTRACTOR THAT IS FAMILIAR WITH TRACK AND FIELD CONSTRUCTION AND ALL LOCAL CODES AND RESTRICTIONS.
2. BOLT RINGS TOGETHER TO FORM A CIRCLE, AND POSITION AS SHOWN. TOP OF RING SHOULD BE HELD EVEN WITH THE TOP OF THE FORMS IF A FINISHED CONCRETE SURFACE IS USED. SET FORMS MINUS THE THICKNESS OF FINISHED SURFACE IF ARTIFICIAL IS USED. SECURE RING DOWN IN POSITION WITH ANCHORS BEFORE POURING CONCRETE.
3. INSTALL A DRAIN IF REQUIRED, ACCORDING TO LOCAL REGULATIONS. INSTALL AS TO NOT INTERFERE WITH ATHLETE.
4. ON THE INSIDE OF RING, POUR AND LEVEL CONCRETE TO 3/4" BELOW THE TOP OF RING. THIS WILL FORM THE 3/4" DEPRESSED THROWING SURFACE. OUTSIDE TOP EDGE OF RING TO BE FLUSH WITH THE FINISHED SURFACE.



www.stackhouseathletic.com

STACKHOUSE
athletic equipment

Phone: (503) 363-1840 Toll Free: (800) 285-3604
Fax: (503) 363-0511 www.stackhouseathletic.com

ALL ALUMINUM WEBBED SHOT/HAMMER RING
INSTALLATION DRAWING

PAGE 2 of 2 PRODUCT CODE: TSHWEB

DATE: 12-08

DRAWN BY: S.L.

DWG: TSHWEB INST PG2-REV-08