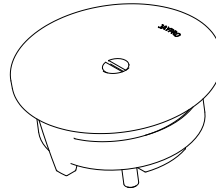
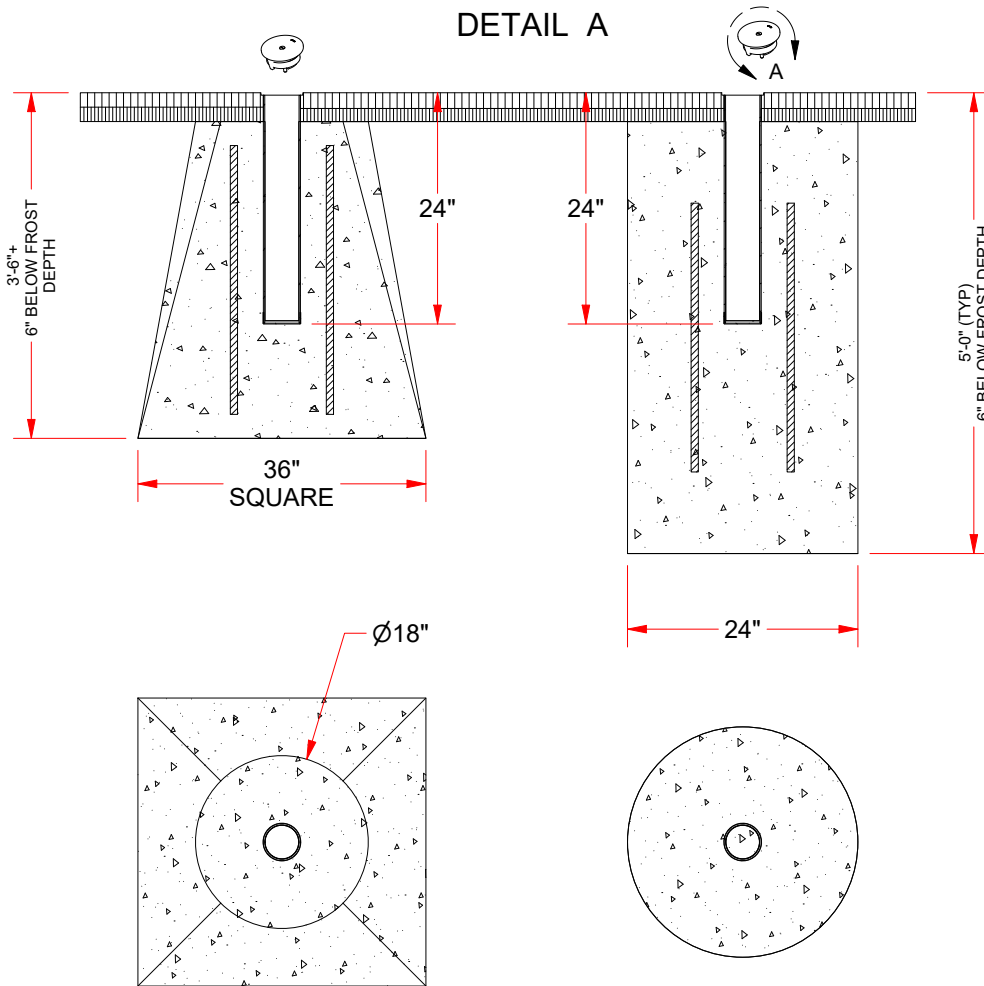


TP-150G INSTALLATION GUIDE

TO INSTALL OPTIONAL TOP CAP (P/N AF1213A), INSERT INTO GROUND SLEEVE AND THEN TURN SCREW CLOCKWISE UNTIL SECURE. TO UNINSTALL, TURN SCREW COUNTERCLOCKWISE AS NEEDED TO LOOSEN FIT AND REMOVE.



DETAIL A



NOTES:

- SEE COURT LAYOUT TO LOCATE FOOTINGS. TYPICAL PLACEMENT IS 42' CENTER TO CENTER.
- FOOTINGS FOR POSTS MAY BE A PYRAMID SHAPE OR A CYLINDER SHAPE
- FOUNDATION DEPTH AND WIDTH SHALL VARY - ABOVE SPECIFICATIONS ARE APPROXIMATE AND FOOTINGS SHALL BE POURED AS NEEDED FOR LOCAL SOIL AND FROST CONDITIONS.
- CONCRETE SHOULD BE 4000 PSI COMPRESSIVE STRENGTH MIN.
- CURING TIME SHOULD BE 7 DAYS MIN. BEFORE PUTTING INTO SERVICE.
- FOR SAFE OPERATION AND CONTINUED HIGH PERFORMANCE FROM THIS EQUIPMENT, INSPECTION AND MAINTENANCE MUST BE PERFORMED BEFORE EACH USE.
- USE OF THIS EQUIPMENT OTHER THAN INTENDED MAY BE HAZARDOUS
- ALTERATION OR MODIFICATION OF EQUIPMENT MAY BE HAZARDOUS. FOR REPAIR OR REPLACEMENT, PLEASE CALL JAYPRO SPORTS. 1-800-243-0533.



TP-150G

www.jayprosports.com / (800) 243-0533 / 976 Hartford Tpke, Waterford, CT 06385 USA

SUBJECT TO CHANGES IN DESIGN AND MANUFACTURING
© COPYRIGHT 2022 JAYPRO SPORTS, LLC. ALL RIGHTS RESERVED