






**-- WALLGUARD --
Installation Instructions**



Call Jaypro Sports Equipment at 1-800-243-0533 during regular business hours for technical support.

www.jaypro.com

WALLGUARD

ITEM	IMAGE	DESCRIPTION	QTY
1		WALL PADS	Varies
2		Z-BRACKET CLIPS <i>(P/N: HM6510)</i>	Varies
3		#10 x 1" Round Washer HD Phillips Screw <i>(P/N: HS5144)</i>	Varies
ITEM	IMAGE	DESCRIPTION	QTY

IMPORTANT:
 BECAUSE MOUNTING HARDWARE REQUIREMENTS VARY BY APPLICATION,
 WALL FASTENERS ARE NOT INCLUDED WITH YOUR PADDING ORDER.
 APPROPRIATE FASTENERS WILL NEED TO BE PURCHASED SEPARATELY
 PRIOR TO INSTALLATION.

IMPORTANT NOTICE:

- 1) READ ALL INSTRUCTIONS THOROUGHLY BEFORE BEGINNING INSTALLATION OF THESE WALL PADS.
- 2) CHECK INSTALLATION / ARCHITECTURAL DRAWINGS SPECIFIC TO THIS PROJECT TO DETERMINE LOCATION OF WALL PADS IN THE FACILITY.
- 3) **PANELS MUST BE INSPECTED BEFORE INSTALLATION.**
- 4) TO MINIMIZE WRINKLES IN FABRIC OF INSTALLED PANELS, WALL MUST BE EITHER PERFECTLY PLUMB, OR SLIGHTLY CONVEX (BOWED OUT) OVER THE AREA TO BE COVERED.
- 5) MOUNTING HARDWARE REQUIREMENTS MAY VARY BY APPLICATION, WALL FASTENERS ARE NOT INCLUDED WITH WALL PAD ORDER. APPROPRIATE FASTENERS **WILL NEED TO BE PURCHASED SEPARATELY** PRIOR TO INSTALLATION.
- 6) NEVER INSTALL WALL PADS MORE THAN 4" ABOVE THE FINISHED FLOOR, PER ASTM (F2440-04). VISIT THE ASTM WEBSITE: www.astm.org

INSTALLATION:

- Unpack all parts and check against parts list to ensure that all have been included.
- Inspect all parts for damage. Report any damages to the trucking company.
- Tools required: tape measure, step ladder, circular saw, brick, or block.

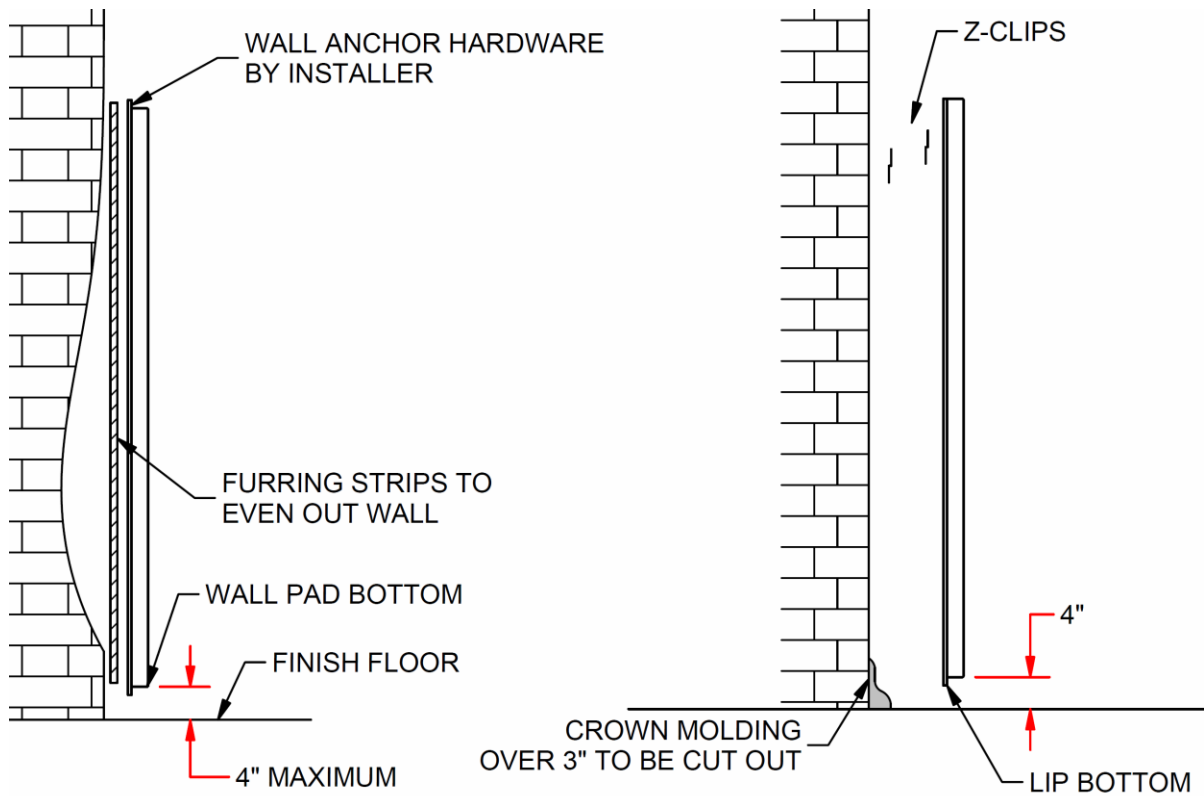


Figure 1

Height of wall pad should never exceed 4" from the bottom of pad.

COVE BASE MOULDINGS UNDER WALL PADS WILL NEED TO BE CUT OUT IF THEY ARE GREATER THAN 3" TALL.

Level and plumb wall pads before proceeding with the remaining pads.



TYPICAL WALL PAD CUT OUT

1. Determine the cutout location on the plywood and mark directly on the vinyl in front.
2. Carefully cut the plywood (jigsaw) and foam to the correct size without cutting the vinyl.
3. Figure 1 illustrates how to cut the vinyl (dotted line).
4. Figure 2 shows cutouts at the edge of the pad.
5. Fold back the triangular shape pieces. Figure 3 measures the actual size of the cutout. Add up the lengths of all 4 sides and add a 1/2" cut sewn strip to this length.
(ex. 3" x 5" cutout, $3'' + 5'' + 3'' + 5'' + 1/2'' = 16\ 1/2''$)
6. Cut four pieces of corrugated plastic to match up with the four sides of the cutout. Deduct approx. 1/8" from each piece. (Ex. 3" x 5", cut 2 pieces at 2 7/8", 2 pieces at 4 7/8") and insert into the sleeve on the sewn vinyl strip.
7. Fold into a rectangle the same shape as the cutout and cut the single ply of vinyl in each corner up to but not through the sewn line (Figure 4).
8. Place the cutout insert inside the cutout. Place the seam in a top corner. Pull the vinyl to the back side.
9. The front welting lip should be tight against the front edge of the cutout area.
10. Position and staple the flaps on the back side.
11. HH66 vinyl cement should be used just behind the welting on the side of the insert.

