

33G45G 33GS45G

Indoor Emergency Safety Shower Type: Combination, Top or Bottom Water Inlet

Wall-mounted unheated emergency safety shower with closed ABS eye/face wash unit. Ideal for use in indoor applications not subject to the possibility of freezing or overheating. Eye/face wash orientation can be varied to suit individual requirements. Available with either galvanized mild steel or stainless steel pipework. Includes universal eye wash and shower sign for enhanced visibility. ANSI compliant.



Specifications

MATERIALS OF CONSTRUCTION	
PIPEWORK AND FITTINGS (G)	Galvanized mild steel tubulars and fittings
PIPEWORK AND FITTINGS (GS)	Stainless steel tubulars and fittings
OPERATING VALVES	Shower: 316L stainless steel, two piece stay open valve Eye/face: chrome plated brass
SHOWER SPRAY OUTLET	Machine molded nylon 6 red shower nozzle
EYE/FACE WASH BOWL/LID	Acrylic capped ABS
EYE WASH DIFFUSERS	Chrome plated brass with stainless steel mesh
SERVICES	
WATER INLET	1-1/4 in Female NPT
DESIGN OPERATING PRESSURE	2.0 to 6 BAR G (29 to 87 PSI)
TEST PRESSURE	10.3 BAR G (149 PSI)
MINIMUM FLOW AT OPERATING PRESSURE	Shower: 76 liters/minute minimum (20 US gallons). Eye/face wash: 11.4 liters/minute minimum (3 US gallons)
ENVIRONMENTAL OPERATING TEMPERATURE	
MINIMUM AMBIENT OPERATING TEMPERATURE	5° C (41° F)
MAXIMUM AMBIENT OPERATING TEMPERATURE	35° C (95° F)
OPERATIONAL	
SHOWER SPRAY OPERATION	Pull handle
EYE/FACE WASH OPERATION	Pull lid forward
NOMINAL WEIGHTS and DIMENSIONS	
DIMENSIONS - STANDARD ORIENTATION (W x D x H)	504 mm (19.8 in) x 737 mm (29 in) x 1695 mm (66.7 in) Height includes sign
WEIGHT (NO OPTIONS)	18 kg (40 lbs)

HUGHES

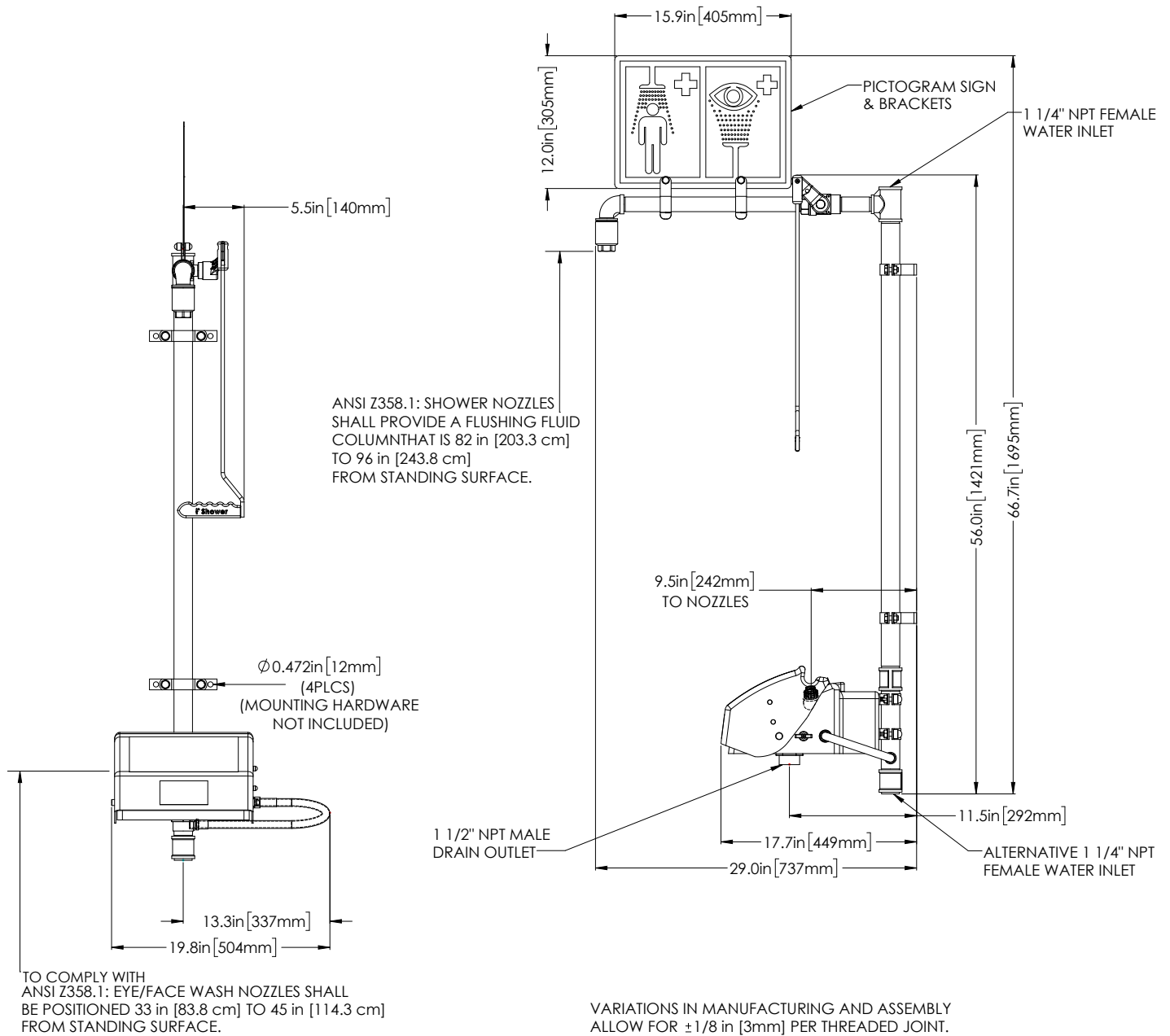


HUGHES-SAFETY-SHOWERS.COM

Justrite Safety Group

RM07299 RevA

hughes-safety-showers.com



Hughes North America
457 Campbell Street
Sarnia, Ontario N7T 2J1, Canada.

HUGHES-SAFETY-SHOWERS.COM
Justrite Safety Group

For Technical Support Contact:
customer.service@hughes-safety.com • 1-866-312-1652

For Reorder & Sales Support Contact:
custserv@justrite.com • 1-800-798-9250