



REAR BAR INSTALLATION INSTRUCTIONS

Part Numbers: 11501, 11502, 11503, 11504, 11505, 11506, 11507, 11508, 11509, 11510, 11511, 11512, 11513, 11517, 11310, 11310R, 11311

The Backrack " REAR BAR" simply drops into the rear stake pockets of your pickup truck. It is not fastened into the stake pockets to allow for quick removal when it is not needed.

Step 1: Remove the Rear Bar Stakes from the Rear Bar

1) With a 9/16 wrench, remove the Rear Bar Stakes (F) from the Rear Bar (A) 2) Keep the bolts, nuts, and washers as you will need them later.

Step 2: Insert the Rear Bar Stakes into each rear stake pocket

1) Insert the Rear Bar Stakes (F) into each rear stake pocket. 2) If your truck has an over the rail bed liner you will need to cut an opening to expose the stake pocket hole.

Step 3: Bolt the Rear Bar to the Rear Bar Stakes

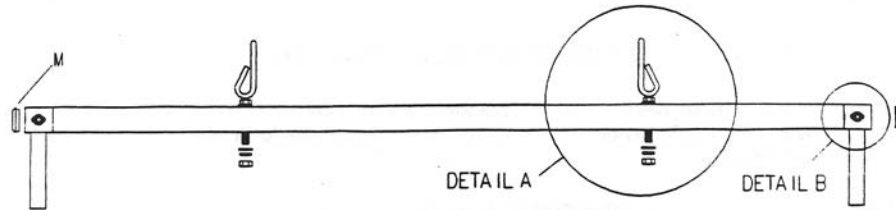
1) Open the plastic hardware bag and locate 2 of each of the following, 3/8" x 3/4" bolt (B), 3/8" lock washer (D), 3/8" flat washer (C), and 3/8" nut (E)
2) With the Rear Bar Stakes (F) inserted inside the stake pockets, drop the Rear Bar (A) into the channel section of the Rear Bar Stakes (see Detail B on back of sheet).
3) Fasten the Rear Bar to the Rear Bar Stakes using the fasteners listed in step 3: 1 above as well as the fasteners you removed with the Rear Bar Stakes in Step 1 :2.
4) Be sure that the nuts are inside the Rear Bar (A) 5) When the fasteners are tightened insert the black plastic plugs (M) in each end to close the end of the tube and hide the fasteners.

Step 4: Fasten the Rear Bar Hooks to the Rear Bar

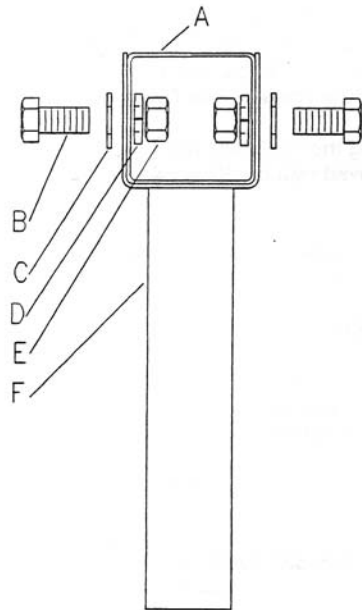
1) The Rear Bar Hooks (G) are designed to keep your ladder or long load from sliding sideways as well as providing a tie point for your load.
2) Fasten the Hooks to the Rear Bar with the 1/2" flat washers, lock washers, and nuts. (see Detail A on back of sheet).
3) Finish the installation by ensuring that all fasteners are tight and secure.

We would be happy to answer any installation questions you may have. Please call our customer service dept. at 1-800-265-8137 or 905-335-6289 EST. Or email us at mfg@backrack.ca

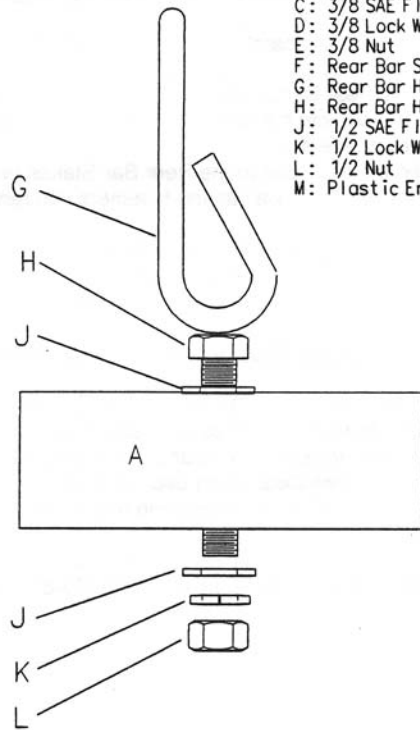
REAR BAR ASSEMBLY



DETAIL B



DETAIL A



- A: Rear Bar Tube
- B: 3/8 x 3/4 Bolt
- C: 3/8 SAE Flat Washer
- D: 3/8 Lock Washer
- E: 3/8 Nut
- F: Rear Bar Stake
- G: Rear Bar Hook
- H: Rear Bar Hook Bolt
- J: 1/2 SAE Flat Washer
- K: 1/2 Lock Washer
- L: 1/2 Nut
- M: Plastic End Cap