



Accessory Items

Impact Wrench Chuck

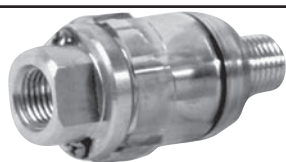
- 1012 1/2" Chuck for 1/2" Sq. Drive
- 1014 3/8" Chuck for 3/8" Sq. Drive

Chuck slips onto square spindle and transforms your impact wrench into an efficient drilling tool.



Oiler / Midget Oiler

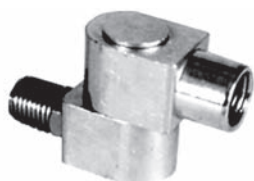
- 1070 Attaches directly to any air tool. 1/4" Male x 1/4" Female NPT. Adjustable flow rate. Holds 9 CCs of oil.



- 1071 High-impact plastic reservoir allows operator to see when refill is necessary.

360° Hose Swivel

- 1094 1/4" NPT
- 1095 3/8" NPT



Pressure-Feed Pneumatic Tool Lubricators



1066



1067



1068



1069

Pressure-feed lubricators increase the life and productivity of your air tools and are easily installed on any air line, hose, compressor or air tool. When the tool is started a momentary pressure drop occurs and back pressure forces a fog of oil into the air stream to the tool. This operation repeats each time the tool is operated as long as the reservoir has oil. This may be checked through the pressure-proof window or window cap. The adjustable feeder allows you to set the lubricator valve for all climates and conditions. Refilling is easy: just remove the manual relieving safety filler cap and fill the reservoir.

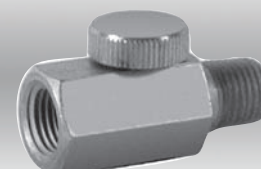
| MODEL | LENGTH | WIDTH | HEIGHT | WEIGHT | OIL CAP. | PIPE SIZE | CAP. FREE AIR | SAFETY FACTOR |
|------------------------|--------|--------|----------|----------|----------|-----------|---------------|---------------|
| 1066 | 4 1/2" | 2 3/8" | 2 13/16" | 1 LB. | 1.4 OZ. | 1/2" NPT | 100 SCFM | 500 |
| 1067 | 6" | 2 7/8" | 3 3/8" | 1.5 LB. | 4.0 OZ. | 3/4" NPT | 175 SCFM | 260 |
| 1068 | 7" | 3 3/8" | 3 11/16" | 2 LB. | 11 OZ. | 3/4" NPT | 175 SCFM | 300 |
| 1069 | 10" | 3 7/8" | 4 3/16" | 4.25 LB. | 16 OZ. | 1" NPT | 350 SCFM | 250 |
| 1066SG SIGHT GLASS CAP | | | | | | | | |
| 1066-1 O-RING | | | | | | | | |

AIR REGULATORS



894
(CPT No. CA 085203)

For tools with 1/4" threaded inlet. Spring loaded lock type arrangement stays at your setting and restricts air flow to suit your needs.



889 Brass
890 Aluminum

Increase or decrease pressure as needed. 1/4" Male x 1/4" Female NPT.

WARNING:
Wear Safety Goggles

