

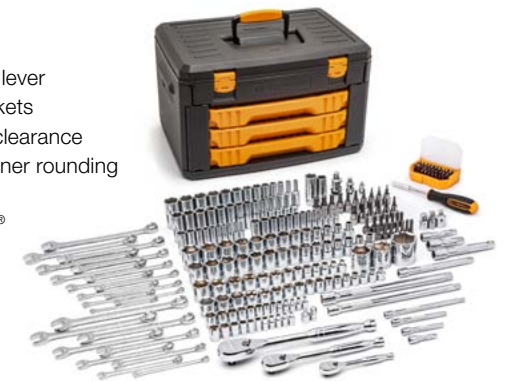
613 Pc. Master Mechanics Hand Tool Set ■ *Continued from previous page*

| Cat. No. | Description | Cat. No. | Description |
|----------|---|----------|---|
| 80822 | 1/2" Drive 12 Point Deep Metric Socket 24mm | 80436D | 3/8" Drive Long Ball End Hex Bit SAE Socket 3/16" |
| 80824 | 1/2" Drive 12 Point Deep Metric Socket 27mm | 80437 | 3/8" Drive Long Ball End Hex Bit SAE Socket 7/32" |
| 80826 | 1/2" Drive 12 Point Deep Metric Socket 30mm | 80438 | 3/8" Drive Long Ball End Hex Bit SAE Socket 1/4" |
| 80827 | 1/2" Drive 12 Point Deep Metric Socket 32mm | 80439 | 3/8" Drive Long Ball End Hex Bit SAE Socket 5/16" |
| 80151D | 1/4" Drive Hex Bit SAE Socket 1/16" | 80440 | 3/8" Drive Long Ball End Hex Bit SAE Socket 3/8" |
| 80152 | 1/4" Drive Hex Bit SAE Socket 5/64" | 80441 | 3/8" Drive Long Ball End Hex Bit Metric Socket 3mm |
| 80153 | 1/4" Drive Hex Bit SAE Socket 3/32" | 80442 | 3/8" Drive Long Ball End Hex Bit Metric Socket 4mm |
| 80154 | 1/4" Drive Hex Bit SAE Socket 7/64" | 80443 | 3/8" Drive Long Ball End Hex Bit Metric Socket 5mm |
| 80155 | 1/4" Drive Hex Bit SAE Socket 1/8" | 80444 | 3/8" Drive Long Ball End Hex Bit Metric Socket 6mm |
| 80156 | 1/4" Drive Hex Bit SAE Socket 9/64" | 80445 | 3/8" Drive Long Ball End Hex Bit Metric Socket 7mm |
| 80157 | 1/4" Drive Hex Bit SAE Socket 5/32" | 80446 | 3/8" Drive Long Ball End Hex Bit Metric Socket 8mm |
| 80158 | 1/4" Drive Hex Bit SAE Socket 3/16" | 80447 | 3/8" Drive Long Ball End Hex Bit Metric Socket 9mm |
| 80159 | 1/4" Drive Hex Bit SAE Socket 7/32" | 80448 | 3/8" Drive Long Ball End Hex Bit Metric Socket 10mm |
| 80160 | 1/4" Drive Hex Bit SAE Socket 1/4" | 80467 | 3/8" Drive Phillips® Bit Socket #1 |
| 80161 | 1/4" Drive Hex Bit Metric Socket 2mm | 80468 | 3/8" Drive Phillips® Bit Socket #2 |
| 80162 | 1/4" Drive Hex Bit Metric Socket 2.5mm | 80469 | 3/8" Drive Phillips® Bit Socket #3 |
| 80163 | 1/4" Drive Hex Bit Metric Socket 3mm | 80464 | 3/8" Drive Slotted Bit Socket 4mm |
| 80164 | 1/4" Drive Hex Bit Metric Socket 4mm | 80465 | 3/8" Drive Slotted Bit Socket 5mm |
| 80165 | 1/4" Drive Hex Bit Metric Socket 5mm | 80466 | 3/8" Drive Slotted Bit Socket 6mm |
| 80166 | 1/4" Drive Hex Bit Metric Socket 6mm | 80470 | 3/8" Drive Pozidriv® Bit Socket #2 |
| 80410 | 3/8" Drive Hex Bit SAE Socket 1/16" | 80651 | 1/2" Drive Hex Bit SAE Socket 5/16" |
| 80411 | 3/8" Drive Hex Bit SAE Socket 5/64" | 80652 | 1/2" Drive Hex Bit SAE Socket 3/8" |
| 80412D | 3/8" Drive Hex Bit SAE Socket 3/32" | 80653 | 1/2" Drive Hex Bit SAE Socket 7/16" |
| 80413 | 3/8" Drive Hex Bit SAE Socket 7/64" | 80654 | 1/2" Drive Hex Bit SAE Socket 1/2" |
| 80414 | 3/8" Drive Hex Bit SAE Socket 1/8" | 80655 | 1/2" Drive Hex Bit SAE Socket 9/16" |
| 80415D | 3/8" Drive Hex Bit SAE Socket 9/64" | 80656 | 1/2" Drive Hex Bit SAE Socket 5/8" |
| 80416 | 3/8" Drive Hex Bit SAE Socket 5/32" | 80657 | 1/2" Drive Hex Bit SAE Socket 3/4" |
| 80417 | 3/8" Drive Hex Bit SAE Socket 3/16" | 80658 | 1/2" Drive Hex Bit Metric Socket 6mm |
| 80418 | 3/8" Drive Hex Bit SAE Socket 7/32" | 80659 | 1/2" Drive Hex Bit Metric Socket 8mm |
| 80419 | 3/8" Drive Hex Bit SAE Socket 1/4" | 80660 | 1/2" Drive Hex Bit Metric Socket 10mm |
| 80420 | 3/8" Drive Hex Bit SAE Socket 5/16" | 80661 | 1/2" Drive Hex Bit Metric Socket 12mm |
| 80421 | 3/8" Drive Hex Bit SAE Socket 3/8" | 80662 | 1/2" Drive Hex Bit Metric Socket 14mm |
| 80422 | 3/8" Drive Hex Bit Metric Socket 2mm | 80663 | 1/2" Drive Hex Bit Metric Socket 17mm |
| 80423 | 3/8" Drive Hex Bit Metric Socket 2.5mm | 80664 | 1/2" Drive Hex Bit Metric Socket 19mm |
| 80424 | 3/8" Drive Hex Bit Metric Socket 3mm | 82063 | 10" Straight Jaw Tongue and Groove Pliers |
| 80425 | 3/8" Drive Hex Bit Metric Socket 4mm | 82065 | 12" Straight Jaw Tongue and Groove Pliers |
| 80426 | 3/8" Drive Hex Bit Metric Socket 5mm | 82069 | 8" Slip Joint Pliers |
| 80427 | 3/8" Drive Hex Bit Metric Socket 6mm | 82071 | 7" Heavy-Duty Diagonal Cutting Pliers |
| 80428D | 3/8" Drive Hex Bit Metric Socket 7mm | 82073 | 7-1/2" Long Nose Side Cutting Pliers |
| 80429 | 3/8" Drive Hex Bit Metric Socket 8mm | 82075 | 8" Lineman's Side Cutting Pliers |
| 80430 | 3/8" Drive Hex Bit Metric Socket 9mm | 82076 | 7" End Cutting Nipper Pliers |
| 80431 | 3/8" Drive Hex Bit Metric Socket 10mm | 80000 | Dual Material Phillips® Screwdriver #0 x 2-1/2" |
| 80432 | 3/8" Drive Hex Bit Metric Socket 11mm | 80001 | Dual Material Phillips® Screwdriver #1 x 3" |
| 80433 | 3/8" Drive Hex Bit Metric Socket 12mm | 80004 | Dual Material Phillips® Screwdriver #1 x 6" |
| 80434 | 3/8" Drive Long Ball End Hex Bit SAE Socket 1/8" | 80005 | Dual Material Phillips® Screwdriver #2 x 1-1/2" |
| 80435 | 3/8" Drive Long Ball End Hex Bit SAE Socket 5/32" | 80007 | Dual Material Phillips® Screwdriver #2 x 4" |

| Cat. No. | Description | Cat. No. | Description |
|----------|---|----------|--|
| 80011 | Dual Material Phillips® Screwdriver #3 x 6" | 80014 | Dual Material Slotted Screwdriver 1/4" x 6" |
| 80018D | Dual Material Slotted Screwdriver 3/16" x 6" | 80023 | Dual Material Slotted Screwdriver 5/16" x 6" |
| 80012D | Dual Material Slotted Screwdriver 1/4" x 1-1/2" | 80022 | Dual Material Slotted Screwdriver 3/8" x 8" |
| 80013 | Dual Material Slotted Screwdriver 1/4" x 4" | | |

243 Pc. 1/4", 3/8", and 1/2" Drive 6 Point SAE/Metric Mechanics Tool Set

- Full polish chrome SAE and metric 1/4, 3/8" and 1/2" standard sockets, and 1/4" and 3/8" deep sockets
- 84 tooth full polish chrome teardrop ratchets, with flush mounted on/off lever
- Contains 6 point full polish long pattern combination wrenches and sockets
- Combination wrenches feature a 15° offset box end for added knuckle clearance
- Sockets and wrenches feature off-corner loading design to reduce fastener rounding
- Universal joints provide additional access to hard to reach fasteners
- Magnetic bit driver with 30 bits including Torx®, hex, slotted and Phillips®
- Extension bars feature a knurled grip, providing a non slip surface
- 3-drawer storage box with independent sliding drawers, locking side flaps, a steel hinged lid and a durable handle
- Meets or exceeds ASME specifications



| Cat. No. | Included Storage | Product Weight |
|----------|----------------------|----------------|
| 80966 | 3 Drawer Storage Box | 48.000 lb |

| Cat. No. | Description | Cat. No. | Description |
|----------|--|----------|-----------------------------------|
| 81011F | 1/4" Drive 84 Tooth Teardrop Ratchet 5" | 80600D | 1/2" Drive Universal Joint |
| 81211F | 3/8" Drive 84 Tooth Teardrop Ratchet 8-1/4" | 81768 | 1/4" 6 Point Combination Wrench |
| 81304F | 1/2" Drive 84 Tooth Teardrop Ratchet 11" | 81769 | 5/16" 6 Point Combination Wrench |
| 82783 | 1/4" Magnetic Bit Holding Screwdriver Handle | 81771 | 3/8" 6 Point Combination Wrench |
| 81101 | 1/4" Drive Extension 2" | 81772 | 7/16" 6 Point Combination Wrench |
| 81113D | 1/4" Drive Extension 3" | 81773 | 1/2" 6 Point Combination Wrench |
| 81114D | 1/4" Drive Extension 4" | 81774 | 9/16" 6 Point Combination Wrench |
| 81116 | 1/4" Drive Extension 6" | 81775 | 5/8" 6 Point Combination Wrench |
| 81240 | 3/8" Drive Extension 1-1/2" | 81776 | 11/16" 6 Point Combination Wrench |
| 81241 | 3/8" Drive Extension 3" | 81777 | 3/4" 6 Point Combination Wrench |
| 81242 | 3/8" Drive Extension 6" | 81754 | 6mm 6 Point Combination Wrench |
| 81243 | 3/8" Drive Extension 10" | 81755 | 7mm 6 Point Combination Wrench |
| 81340 | 1/2" Drive Extension 3" | 81756 | 8mm 6 Point Combination Wrench |
| 81341 | 1/2" Drive Extension 5" | 81757 | 9mm 6 Point Combination Wrench |
| 81342 | 1/2" Drive Extension 10" | 81758 | 10mm 6 Point Combination Wrench |
| 80480 | 1/4" Bit Adapter 1/4" Drive | 81759 | 11mm 6 Point Combination Wrench |
| 81127 | 1/4" Drive 1/4" F x 3/8" M Adapter | 81760D | 12mm 6 Point Combination Wrench |
| 81277 | 3/8" Drive 3/8" F x 1/4" M Adapter | 81761 | 13mm 6 Point Combination Wrench |
| 81278 | 3/8" Drive 3/8" F x 1/2" M Adapter | 81762 | 14mm 6 Point Combination Wrench |
| 81354 | 1/2" Drive 1/2" F x 3/8" M Adapter | 81763 | 15mm 6 Point Combination Wrench |
| 80100 | 1/4" Drive Universal Joint | 81764 | 16mm 6 Point Combination Wrench |
| 80549 | 3/8" Drive Universal Joint | | |

■ *Continued on next page*

232 Pc. Mechanics Tool Set ■ *Continued from previous page*

| Cat. No. | Description | Cat. No. | Description |
|----------|--|----------|---|
| 80130 | 1/4" Drive 6 Point Standard Metric Socket 8mm | 80385 | 3/8" Drive 6 Point Standard Metric Socket 17mm |
| 80131D | 1/4" Drive 6 Point Standard Metric Socket 9mm | 80386 | 3/8" Drive 6 Point Standard Metric Socket 18mm |
| 80132 | 1/4" Drive 6 Point Standard Metric Socket 10mm | 80387 | 3/8" Drive 6 Point Standard Metric Socket 19mm |
| 80133 | 1/4" Drive 6 Point Standard Metric Socket 11mm | 80330 | 3/8" Drive 6 Point Standard Metric Socket 20mm |
| 80134 | 1/4" Drive 6 Point Standard Metric Socket 12mm | 80331 | 3/8" Drive 6 Point Standard Metric Socket 21mm |
| 80135D | 1/4" Drive 6 Point Standard Metric Socket 13mm | 80332 | 3/8" Drive 6 Point Standard Metric Socket 22mm |
| 80138 | 1/4" Drive 6 Point Deep Metric Socket 4mm | 80391 | 3/8" Drive 6 Point Deep Metric Socket 9mm |
| 80139 | 1/4" Drive 6 Point Deep Metric Socket 5mm | 80392 | 3/8" Drive 6 Point Deep Metric Socket 10mm |
| 80141 | 1/4" Drive 6 Point Deep Metric Socket 6mm | 80393D | 3/8" Drive 6 Point Deep Metric Socket 11mm |
| 80142 | 1/4" Drive 6 Point Deep Metric Socket 7mm | 80394D | 3/8" Drive 6 Point Deep Metric Socket 12mm |
| 80143 | 1/4" Drive 6 Point Deep Metric Socket 8mm | 80395 | 3/8" Drive 6 Point Deep Metric Socket 13mm |
| 80144 | 1/4" Drive 6 Point Deep Metric Socket 9mm | 80396 | 3/8" Drive 6 Point Deep Metric Socket 14mm |
| 80145 | 1/4" Drive 6 Point Deep Metric Socket 10mm | 80397 | 3/8" Drive 6 Point Deep Metric Socket 15mm |
| 80146D | 1/4" Drive 6 Point Deep Metric Socket 11mm | 80398 | 3/8" Drive 6 Point Deep Metric Socket 16mm |
| 80147 | 1/4" Drive 6 Point Deep Metric Socket 12mm | 80399 | 3/8" Drive 6 Point Deep Metric Socket 17mm |
| 80148 | 1/4" Drive 6 Point Deep Metric Socket 13mm | 80400 | 3/8" Drive 6 Point Deep Metric Socket 18mm |
| 80149 | 1/4" Drive 6 Point Deep Metric Socket 14mm | 80401 | 3/8" Drive 6 Point Deep Metric Socket 19mm |
| 80350 | 3/8" Drive 6 Point Standard SAE Socket 1/4" | 80484 | 3/8" Drive 12 Point Standard Metric Socket 8mm |
| 80351 | 3/8" Drive 6 Point Standard SAE Socket 5/16" | 80485 | 3/8" Drive 12 Point Standard Metric Socket 9mm |
| 80352 | 3/8" Drive 6 Point Standard SAE Socket 3/8" | 80486 | 3/8" Drive 12 Point Standard Metric Socket 10mm |
| 80353 | 3/8" Drive 6 Point Standard SAE Socket 7/16" | 80487 | 3/8" Drive 12 Point Standard Metric Socket 11mm |
| 80354 | 3/8" Drive 6 Point Standard SAE Socket 1/2" | 80488 | 3/8" Drive 12 Point Standard Metric Socket 12mm |
| 80355 | 3/8" Drive 6 Point Standard SAE Socket 9/16" | 80489 | 3/8" Drive 12 Point Standard Metric Socket 13mm |
| 80356 | 3/8" Drive 6 Point Standard SAE Socket 5/8" | 80490 | 3/8" Drive 12 Point Standard Metric Socket 14mm |
| 80357 | 3/8" Drive 6 Point Standard SAE Socket 11/16" | 80491 | 3/8" Drive 12 Point Standard Metric Socket 15mm |
| 80358 | 3/8" Drive 6 Point Standard SAE Socket 3/4" | 80492 | 3/8" Drive 12 Point Standard Metric Socket 16mm |
| 80359 | 3/8" Drive 6 Point Standard SAE Socket 13/16" | 80493 | 3/8" Drive 12 Point Standard Metric Socket 17mm |
| 80360 | 3/8" Drive 6 Point Standard SAE Socket 7/8" | 80494 | 3/8" Drive 12 Point Standard Metric Socket 18mm |
| 80365 | 3/8" Drive 6 Point Deep SAE Socket 3/8" | 80495 | 3/8" Drive 12 Point Standard Metric Socket 19mm |
| 80366 | 3/8" Drive 6 Point Deep SAE Socket 7/16" | 80172 | 1/4" Drive Torx® Bit Socket T10 |
| 80367 | 3/8" Drive 6 Point Deep SAE Socket 1/2" | 80173 | 1/4" Drive Torx® Bit Socket T15 |
| 80368 | 3/8" Drive 6 Point Deep SAE Socket 9/16" | 80182 | 1/4" Drive Tamper-Proof Torx® Bit Socket T20 |
| 80369 | 3/8" Drive 6 Point Deep SAE Socket 5/8" | 80183 | 1/4" Drive Tamper-Proof Torx® Bit Socket T25 |
| 80370D | 3/8" Drive 6 Point Deep SAE Socket 11/16" | 80184 | 1/4" Drive Tamper-Proof Torx® Bit Socket T27 |
| 80371 | 3/8" Drive 6 Point Deep SAE Socket 3/4" | 80185 | 1/4" Drive Tamper-Proof Torx® Bit Socket T30 |
| 80374 | 3/8" Drive 6 Point Standard Metric Socket 6mm | 80187 | 1/4" Drive External Torx® Socket E5 |
| 80375 | 3/8" Drive 6 Point Standard Metric Socket 7mm | 80188D | 1/4" Drive External Torx® Socket E6 |
| 80376 | 3/8" Drive 6 Point Standard Metric Socket 8mm | 80189 | 1/4" Drive External Torx® Socket E7 |
| 80377 | 3/8" Drive 6 Point Standard Metric Socket 9mm | 80190 | 1/4" Drive External Torx® Socket E8 |
| 80378 | 3/8" Drive 6 Point Standard Metric Socket 10mm | 80416 | 3/8" Drive Hex Bit SAE Socket 5/32" |
| 80379 | 3/8" Drive 6 Point Standard Metric Socket 11mm | 80417 | 3/8" Drive Hex Bit SAE Socket 3/16" |
| 80380 | 3/8" Drive 6 Point Standard Metric Socket 12mm | 80418 | 3/8" Drive Hex Bit SAE Socket 7/32" |
| 80381 | 3/8" Drive 6 Point Standard Metric Socket 13mm | 80419 | 3/8" Drive Hex Bit SAE Socket 1/4" |
| 80382 | 3/8" Drive 6 Point Standard Metric Socket 14mm | 80420 | 3/8" Drive Hex Bit SAE Socket 5/16" |
| 80383 | 3/8" Drive 6 Point Standard Metric Socket 15mm | 80421 | 3/8" Drive Hex Bit SAE Socket 3/8" |
| 80384 | 3/8" Drive 6 Point Standard Metric Socket 16mm | 80422 | 3/8" Drive Hex Bit Metric Socket 2mm |

| Cat. No. | Description | Cat. No. | Description |
|----------|--|----------|--|
| 80423 | 3/8" Drive Hex Bit Metric Socket 2.5mm | 80462 | 3/8" Drive External Torx® Socket E14 |
| 80424 | 3/8" Drive Hex Bit Metric Socket 3mm | 80463 | 3/8" Drive External Torx® Socket E16 |
| 80425 | 3/8" Drive Hex Bit Metric Socket 4mm | 80402 | 3/8" Drive 6 Point 2-1/2" Spark Plug Socket 5/8" |
| 80426 | 3/8" Drive Hex Bit Metric Socket 5mm | - | 3/16" Nutdriver Bit |
| 80427 | 3/8" Drive Hex Bit Metric Socket 6mm | - | 1/4" Nutdriver Bit |
| 80428D | 3/8" Drive Hex Bit Metric Socket 7mm | - | 5/16" Nutdriver Bit |
| 80429 | 3/8" Drive Hex Bit Metric Socket 8mm | - | 11/32" Nutdriver Bit |
| 80430 | 3/8" Drive Hex Bit Metric Socket 9mm | - | 3/8" Nutdriver Bit |
| 80431 | 3/8" Drive Hex Bit Metric Socket 10mm | - | 7/16" Nutdriver Bit |
| 80451 | 3/8" Drive Torx® Bit Socket T40 | - | 1/2" Nutdriver Bit |
| 80452 | 3/8" Drive Torx® Bit Socket T45 | - | 5mm Nutdriver Bit |
| 80453 | 3/8" Drive Torx® Bit Socket T47 | - | 6mm Nutdriver Bit |
| 80454 | 3/8" Drive Torx® Bit Socket T50 | - | 7mm Nutdriver Bit |
| 80455 | 3/8" Drive Torx® Bit Socket T55 | - | 8mm Nutdriver Bit |
| 80460 | 3/8" Drive External Torx® Socket E10 | - | 9mm Nutdriver Bit |
| 80461 | 3/8" Drive External Torx® Socket E12 | - | 10mm Nutdriver Bit |
| | | - | 11mm Nutdriver Bit |

88 Pc. 1/4" and 3/8" Drive 6 and 12 Point SAE/Metric Mechanics Tool Set

- Full polish chrome 1/4" and 3/8" standard sockets
- 45 tooth quick release full polish chrome teardrop ratchets, with flush-mounted on/off lever
- Contains open end wrenches with full polish chrome finish
- Sockets feature off-corner loading design to reduce fastener rounding
- Includes long arm hex keys
- Magnetic bit driver with ergonomic dual material handle
- Extension bars feature a knurled grip, providing a non slip surface
- Includes blow mold case for storage and organization
- Meets or exceeds ASME specifications



| Cat. No. | Included Storage | Product Weight |
|----------|------------------|----------------|
| 80930 | Blow Mold Case | 8.91 lb |



| Cat. No. | Description | Cat. No. | Description |
|----------|---|----------|---|
| 81218 | 3/8" Drive 45 Tooth Quick Release Teardrop Ratchet 7-3/4" | 80105 | 1/4" Drive 6 Point Standard SAE Socket 3/16" |
| 81128 | 1/4" Drive Spinner Handle 7-3/4" | 80106 | 1/4" Drive 6 Point Standard SAE Socket 7/32" |
| 81241 | 3/8" Drive Extension 3" | 80107 | 1/4" Drive 6 Point Standard SAE Socket 1/4" |
| 81277 | 3/8" Drive 3/8" F x 1/4" M Adapter | 80108 | 1/4" Drive 6 Point Standard SAE Socket 9/32" |
| 56603G | 13 Piece Long Arm SAE Hex Key Set | 80109 | 1/4" Drive 6 Point Standard SAE Socket 5/16" |
| 81794D | 10 x 12mm Full Polish Open End Wrench | 80110 | 1/4" Drive 6 Point Standard SAE Socket 11/32" |
| 81796 | 12 x 14mm Full Polish Open End Wrench | 80111 | 1/4" Drive 6 Point Standard SAE Socket 3/8" |
| 81799 | 3/8" x 7/16" Full Polish Open End Wrench | 80112 | 1/4" Drive 6 Point Standard SAE Socket 7/16" |
| 81801 | 1/2" x 9/16" Full Polish Open End Wrench | 80113D | 1/4" Drive 6 Point Standard SAE Socket 1/2" |
| 80104D | 1/4" Drive 6 Point Standard SAE Socket 5/32" | | |

■ *Continued on next page*

84 Pc. 1/4", 3/8", and 1/2" Drive Hex and Torx® Bit Socket Set

Continued from previous page

| Cat. No. | Description | Cat. No. | Description |
|----------|--|----------|--|
| - | 1/4" Drive Tamper-Proof Torx® Bit Socket T10 | - | 3/8" Drive Long Ball Hex Bit Socket 9mm |
| - | 1/4" Drive Tamper-Proof Torx® Bit Socket T15 | - | 3/8" Drive Long Ball Hex Bit Socket 10mm |
| - | 1/4" Drive Tamper-Proof Torx® Bit Socket T20 | - | 3/8" Drive External Torx® Bit Socket E10 |
| - | 1/4" Drive Tamper-Proof Torx® Bit Socket T25 | - | 3/8" Drive External Torx® Bit Socket E12 |
| - | 1/4" Drive Tamper-Proof Torx® Bit Socket T27 | - | 3/8" Drive External Torx® Bit Socket E14 |
| - | 1/4" Drive Tamper-Proof Torx® Bit Socket T30 | - | 3/8" Drive External Torx® Bit Socket E16 |
| - | 3/8" Drive Hex Bit Socket 7/32" | - | 3/8" Drive Tamper-Proof Torx® Bit Socket T40 |
| - | 3/8" Drive Hex Bit Socket, 1/4" | - | 3/8" Drive Tamper-Proof Torx® Bit Socket T45 |
| - | 3/8" Drive Hex Bit Socket 5/16" | - | 3/8" Drive Tamper-Proof Torx® Bit Socket T50 |
| - | 3/8" Drive Hex Bit Socket 3/8" | - | 3/8" Drive Tamper-Proof Torx® Bit Socket T55 |
| - | 3/8" Drive Hex Bit Socket 6mm | - | 1/2" Drive Hex Bit Socket 7/16" |
| - | 3/8" Drive Hex Bit Socket 7mm | - | 1/2" Drive Hex Bit Socket 1/2" |
| - | 3/8" Drive Hex Bit Socket 8mm | - | 1/2" Drive Hex Bit Socket 9/16" |
| - | 3/8" Drive Hex Bit Socket 9mm | - | 1/2" Drive Hex Bit Socket 5/8" |
| - | 3/8" Drive Hex Bit Socket 10mm | - | 1/2" Drive Hex Bit Socket 3/4" |
| - | 3/8" Drive Torx® Bit Socket T30 | - | 1/2" Drive Hex Bit Socket 10mm |
| - | 3/8" Drive Torx® Bit Socket T40 | - | 1/2" Drive Hex Bit Socket 12mm |
| - | 3/8" Drive Torx® Bit Socket T45 | - | 1/2" Drive Hex Bit Socket 14mm |
| - | 3/8" Drive Torx® Bit Socket T50 | - | 1/2" Drive Hex Bit Socket 17mm |
| - | 3/8" Drive Torx® Bit Socket T55 | - | 1/2" Drive Hex Bit Socket 19mm |
| - | 3/8" Drive Long Torx® Bit Socket T40 | - | 1/2" Drive Torx® Bit Socket, T50 |
| - | 3/8" Drive Long Torx® Bit Socket T45 | - | 1/2" Drive External Torx® Bit Socket E18 |
| - | 3/8" Drive Long Torx® Bit Socket T50 | - | 1/2" Drive External Torx® Bit Socket E20 |
| - | 3/8" Drive Long Ball Hex Bit Socket 4mm | - | 1/2" Drive External Torx® Bit Socket E22 |
| - | 3/8" Drive Long Ball Hex Bit Socket 5mm | - | 1/2" Drive External Torx® Bit Socket E24 |
| - | 3/8" Drive Long Ball Hex Bit Socket 6mm | - | 1/2" Drive Tamper-Proof Torx® Bit Socket T60 |
| - | 3/8" Drive Long Ball Hex Bit Socket 7mm | - | |
| - | 3/8" Drive Long Ball Hex Bit Socket 8mm | - | |

36 Pc. 1/4", 3/8", and 1/2" Drive Hex and Torx® Bit Socket Set

- Heat treated for maximum durability
- Bits made of S2 steel for strength and durability
- Bright, full polish chrome finish easily wipes clean and resists corrosion
- Hard stamped size markings
- Includes socket rail for storage and organization
- Meets or exceeds ASME specifications



| Cat. No. | Included Storage | Product Weight |
|----------|------------------|----------------|
| 80726 | Blow Mold Case | 3.86 lb |



| Cat. No. | Description | Cat. No. | Description |
|----------|--------------------------------------|----------|--|
| 80172 | 1/4" Drive Torx® Bit Socket T10 | 80463 | 3/8" Drive External Torx® Socket E16 |
| 80173 | 1/4" Drive Torx® Bit Socket T15 | 80416 | 3/8" Drive Hex Bit SAE Socket 5/32" |
| 80174 | 1/4" Drive Torx® Bit Socket T20 | 80417 | 3/8" Drive Hex Bit SAE Socket 3/16" |
| 80175 | 1/4" Drive Torx® Bit Socket T25 | 80418 | 3/8" Drive Hex Bit SAE Socket 7/32" |
| 80176D | 1/4" Drive Torx® Bit Socket T27 | 80419 | 3/8" Drive Hex Bit SAE Socket 1/4" |
| 80177D | 1/4" Drive Torx® Bit Socket T30 | 80420 | 3/8" Drive Hex Bit SAE Socket 5/16" |
| 80187 | 1/4" Drive External Torx® Socket E5 | 80421 | 3/8" Drive Hex Bit SAE Socket 3/8" |
| 80188D | 1/4" Drive External Torx® Socket E6 | 80422 | 3/8" Drive Hex Bit Metric Socket 2mm |
| 80189 | 1/4" Drive External Torx® Socket E7 | 80423 | 3/8" Drive Hex Bit Metric Socket 2.5mm |
| 80190 | 1/4" Drive External Torx® Socket E8 | 80424 | 3/8" Drive Hex Bit Metric Socket 3mm |
| 80451 | 3/8" Drive Torx® Bit Socket T40 | 80425 | 3/8" Drive Hex Bit Metric Socket 4mm |
| 80452 | 3/8" Drive Torx® Bit Socket T45 | 80426 | 3/8" Drive Hex Bit Metric Socket 5mm |
| 80453 | 3/8" Drive Torx® Bit Socket T47 | 80427 | 3/8" Drive Hex Bit Metric Socket 6mm |
| 80454 | 3/8" Drive Torx® Bit Socket T50 | 80428D | 3/8" Drive Hex Bit Metric Socket 7mm |
| 80455 | 3/8" Drive Torx® Bit Socket T55 | 80429 | 3/8" Drive Hex Bit Metric Socket 8mm |
| 80460 | 3/8" Drive External Torx® Socket E10 | 80430 | 3/8" Drive Hex Bit Metric Socket 9mm |
| 80461 | 3/8" Drive External Torx® Socket E12 | 80431 | 3/8" Drive Hex Bit Metric Socket 10mm |
| 80462 | 3/8" Drive External Torx® Socket E14 | 80669D | 1/2" Drive External Torx® Socket E18 |

10 Pc. 3/8" and 1/2" Drive SAE Hex Bit Socket Set

- Heat treated for maximum durability
- Bits made of S2 steel for strength and durability
- Bright, full polish chrome finish easily wipes clean and resists corrosion
- Hard stamped size markings
- Includes socket rail for storage and organization
- Meets or exceeds ASME specifications



| Cat. No. | Included Storage | Product Weight |
|----------|------------------|----------------|
| 80579 | Socket Rail | 1.99 lb |

| Cat. No. | Description | Cat. No. | Description |
|----------|-------------------------------------|----------|-------------------------------------|
| 80414 | 3/8" Drive Hex Bit SAE Socket 1/8" | 80420 | 3/8" Drive Hex Bit SAE Socket 5/16" |
| 80416 | 3/8" Drive Hex Bit SAE Socket 5/32" | 80421 | 3/8" Drive Hex Bit SAE Socket 3/8" |
| 80417 | 3/8" Drive Hex Bit SAE Socket 3/16" | 80654 | 1/2" Drive Hex Bit SAE Socket 1/2" |
| 80418 | 3/8" Drive Hex Bit SAE Socket 7/32" | 80655 | 1/2" Drive Hex Bit SAE Socket 9/16" |
| 80419 | 3/8" Drive Hex Bit SAE Socket 1/4" | 80656 | 1/2" Drive Hex Bit SAE Socket 5/8" |

10 Pc. 3/8" and 1/2" Drive Metric Hex Bit Socket Set

- Heat treated for maximum durability
- Bits made of S2 steel for strength and durability
- Bright, full polish chrome finish easily wipes clean and resists corrosion
- Hard stamped size markings
- Includes socket rail for storage and organization
- Meets or exceeds ASME specifications



| Cat. No. | Included Storage | Product Weight |
|----------|------------------|----------------|
| 80578 | Socket Rail | 1.89 lb |

| Cat. No. | Description | Cat. No. | Description |
|----------|--------------------------------------|----------|---------------------------------------|
| 80425 | 3/8" Drive Hex Bit Metric Socket 4mm | 80430 | 3/8" Drive Hex Bit Metric Socket 9mm |
| 80426 | 3/8" Drive Hex Bit Metric Socket 5mm | 80431 | 3/8" Drive Hex Bit Metric Socket 10mm |
| 80427 | 3/8" Drive Hex Bit Metric Socket 6mm | 80661 | 1/2" Drive Hex Bit Metric Socket 12mm |
| 80428D | 3/8" Drive Hex Bit Metric Socket 7mm | 80662 | 1/2" Drive Hex Bit Metric Socket 14mm |
| 80429 | 3/8" Drive Hex Bit Metric Socket 8mm | 80663 | 1/2" Drive Hex Bit Metric Socket 17mm |

36 Pc. 1/4", 3/8", and 1/2" Drive Torx® Bit Socket Set

- Set contains Torx® bit sockets, external Torx® bit sockets, tamper proof Torx® bit sockets
- Large, hard stamped markings offer easy size identification
- Heat treated socket bases for durability
- Bright, full polish chrome finish easily wipes clean and resists corrosion
- Bits made of S2 steel for strength and durability
- Black oxide finish is corrosion resistant on External Torx® sockets
- For use with manual drive tools only
- Includes blow mold case for storage and organization



| Cat. No. | Included Storage | Product Weight |
|----------|------------------|----------------|
| 80728 | Blow Mold Case | 3.640 lb |



| Cat. No. | Description | Cat. No. | Description |
|----------|--|----------|--|
| - | 1/4" Drive Torx® Bit Socket T8 | - | 1/4" Drive External Torx® Bit Socket E7 |
| - | 1/4" Drive Torx® Bit Socket T10 | - | 1/4" Drive External Torx® Bit Socket E8 |
| - | 1/4" Drive Torx® Bit Socket T15 | - | 3/8" Drive Torx® Bit Socket T40 |
| - | 1/4" Drive Torx® Bit Socket T20 | - | 3/8" Drive Torx® Bit Socket T45 |
| - | 1/4" Drive Torx® Bit Socket T25 | - | 3/8" Drive Torx® Bit Socket T47 |
| - | 1/4" Drive Torx® Bit Socket T27 | - | 3/8" Drive Torx® Bit Socket T50 |
| - | 1/4" Drive Torx® Bit Socket T30 | - | 3/8" Drive Torx® Bit Socket T55 |
| - | 1/4" Drive Tamper-Proof Torx® Bit Socket T7 | - | 3/8" Drive Tamper-Proof Torx® Bit Socket T40 |
| - | 1/4" Drive Tamper-Proof Torx® Bit Socket T8 | - | 3/8" Drive Tamper-Proof Torx® Bit Socket T45 |
| - | 1/4" Drive Tamper-Proof Torx® Bit Socket T10 | - | 3/8" Drive Tamper-Proof Torx® Bit Socket T50 |
| - | 1/4" Drive Tamper-Proof Torx® Bit Socket T15 | - | 3/8" Drive Tamper-Proof Torx® Bit Socket T55 |
| - | 1/4" Drive Tamper-Proof Torx® Bit Socket T20 | - | 3/8" Drive External Torx® Bit Socket E10 |
| - | 1/4" Drive Tamper-Proof Torx® Bit Socket T25 | - | 3/8" Drive External Torx® Bit Socket E12 |
| - | 1/4" Drive Tamper-Proof Torx® Bit Socket T27 | - | 3/8" Drive External Torx® Bit Socket E14 |
| - | 1/4" Drive Tamper-Proof Torx® Bit Socket T30 | - | 3/8" Drive External Torx® Bit Socket E16 |
| - | 1/4" Drive External Torx® Bit Socket E4 | - | 1/2" Drive Torx® Bit Socket, T50 |
| - | 1/4" Drive External Torx® Bit Socket E5 | - | 1/2" Drive External Torx® Bit Socket E18 |
| - | 1/4" Drive External Torx® Bit Socket E6 | - | 1/2" Drive External Torx® Bit Socket E20 |

11 Pc. 3/8" Drive SAE Crowfoot Wrench Set

- Allows access to fasteners in confined spaces where a wrench or socket will not fit
- Size markings are stamped on head for easy identification
- Bright, full polish chrome finish easily wipes clean and resists corrosion
- Included tray for storage and organization



SAE

| Cat. No. | Included Storage | Product Weight |
|----------|------------------|----------------|
| 81908 | Tray | 1.98 lb |

| Cat. No. | Description | Cat. No. | Description |
|----------|---|----------|---------------------------------------|
| 81603 | 3/8" Drive Crowfoot SAE Wrench 3/8" | 81609 | 3/8" Drive Crowfoot SAE Wrench 3/4" |
| 81604 | 3/8" Drive Crowfoot SAE Wrench 7/16" | 81610 | 3/8" Drive Crowfoot SAE Wrench 13/16" |
| 81605 | 3/8" Drive Crowfoot SAE Wrench 1/2" | 81611D | 3/8" Drive Crowfoot SAE Wrench 7/8" |
| 81606 | 3/8" Drive Crowfoot Metric Wrench 9/16" | 81612D | 3/8" Drive Crowfoot SAE Wrench 15/16" |
| 81607 | 3/8" Drive Crowfoot SAE Wrench 5/8" | 81613 | 3/8" Drive Crowfoot SAE Wrench 1" |
| 81608 | 3/8" Drive Crowfoot SAE Wrench 11/16" | | |

10 Pc. 3/8" Drive Metric Crowfoot Wrench Set

- Allows access to fasteners in confined spaces where a wrench or socket will not fit
- Size markings are stamped on head for easy identification
- Bright, full polish chrome finish easily wipes clean and resists corrosion
- Included tray for storage and organization



mm

| Cat. No. | Included Storage | Product Weight |
|----------|------------------|----------------|
| 81909 | Tray | 1.43 lb |

| Cat. No. | Description | Cat. No. | Description |
|----------|--|----------|--|
| 81614 | 3/8" Drive Crowfoot Metric Wrench 10mm | 81619 | 3/8" Drive Crowfoot Metric Wrench 15mm |
| 81615 | 3/8" Drive Crowfoot Metric Wrench 11mm | 81620 | 3/8" Drive Crowfoot Metric Wrench 16mm |
| 81616 | 3/8" Drive Crowfoot Metric Wrench 12mm | 81621 | 3/8" Drive Crowfoot Metric Wrench 17mm |
| 81617 | 3/8" Drive Crowfoot Metric Wrench 13mm | 81622 | 3/8" Drive Crowfoot Metric Wrench 18mm |
| 81618 | 3/8" Drive Crowfoot Metric Wrench 14mm | 81623 | 3/8" Drive Crowfoot Metric Wrench 19mm |

12 Pc. 3/8" Drive SAE Hex Bit Socket Set

- Heat treated for maximum durability
- Bits made of S2 steel for strength and durability
- Hard stamped size markings
- Bright, full polish chrome finish easily wipes clean and resists corrosion
- Includes socket rail for storage and organization
- Meets or exceeds ASME specifications



SAE

| Cat. No. | Included Storage | Product Weight |
|----------|------------------|----------------|
| 80581 | Socket Rail | 1.44 lb |

| Cat. No. | Description | Cat. No. | Description |
|----------|-------------------------------------|----------|-------------------------------------|
| 80410 | 3/8" Drive Hex Bit SAE Socket 1/16" | 80416 | 3/8" Drive Hex Bit SAE Socket 5/32" |
| 80411 | 3/8" Drive Hex Bit SAE Socket 5/64" | 80417 | 3/8" Drive Hex Bit SAE Socket 3/16" |
| 80412D | 3/8" Drive Hex Bit SAE Socket 3/32" | 80418 | 3/8" Drive Hex Bit SAE Socket 7/32" |
| 80413 | 3/8" Drive Hex Bit SAE Socket 7/64" | 80419 | 3/8" Drive Hex Bit SAE Socket 1/4" |
| 80414 | 3/8" Drive Hex Bit SAE Socket 1/8" | 80420 | 3/8" Drive Hex Bit SAE Socket 5/16" |
| 80415D | 3/8" Drive Hex Bit SAE Socket 9/64" | 80421 | 3/8" Drive Hex Bit SAE Socket 3/8" |

12 Pc. 3/8" Drive Metric Hex Bit Socket Set

- Heat treated for maximum durability
- Bits made of S2 steel for strength and durability
- Hard stamped size markings
- Bright, full polish chrome finish easily wipes clean and resists corrosion
- Includes socket rail for storage and organization
- Meets or exceeds ASME specifications



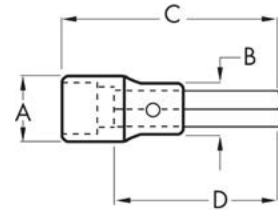
mm

| Cat. No. | Included Storage | Product Weight |
|----------|------------------|----------------|
| 80580 | Socket Rail | 1.68 lb |

| Cat. No. | Description | Cat. No. | Description |
|----------|--|----------|---------------------------------------|
| 80422 | 3/8" Drive Hex Bit Metric Socket 2mm | 80428D | 3/8" Drive Hex Bit Metric Socket 7mm |
| 80423 | 3/8" Drive Hex Bit Metric Socket 2.5mm | 80429 | 3/8" Drive Hex Bit Metric Socket 8mm |
| 80424 | 3/8" Drive Hex Bit Metric Socket 3mm | 80430 | 3/8" Drive Hex Bit Metric Socket 9mm |
| 80425 | 3/8" Drive Hex Bit Metric Socket 4mm | 80431 | 3/8" Drive Hex Bit Metric Socket 10mm |
| 80426 | 3/8" Drive Hex Bit Metric Socket 5mm | 80432 | 3/8" Drive Hex Bit Metric Socket 11mm |
| 80427 | 3/8" Drive Hex Bit Metric Socket 6mm | 80433 | 3/8" Drive Hex Bit Metric Socket 12mm |

3/8" Drive Hex Bit Sockets

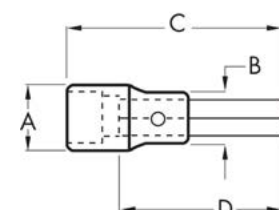
- Heat-treated socket base for durability
- S2 steel insert bits offer maximum strength
- Double line (SAE) and knurled (metric) ring help easily identify standard and metric sockets
- Hard stamped size markings
- Bright, full polish chrome finish easily wipes clean and resists corrosion
- Meets or exceeds ASME specifications



| Cat. No. | SAE/Metric | Fastener Size | Dim. A: Drive End | Dim. B: Nose Diameter | Dim. C: Overall Length | Dim. D: Bit Length | Product Weight |
|----------|------------|---------------|-------------------|-----------------------|------------------------|--------------------|----------------|
| 80410 | SAE | 1/16 in | 0.688 in | 0.590 in | 1.653 in | 0.984 in | 0.09 lb |
| 80411 | SAE | 5/64 in | 0.688 in | 0.590 in | 1.653 in | 0.984 in | 0.11 lb |
| 80412D | SAE | 3/32 in | 0.688 in | 0.590 in | 1.653 in | 0.984 in | 0.13 lb |
| 80413 | SAE | 7/64 in | 0.688 in | 0.590 in | 1.653 in | 0.984 in | 0.13 lb |
| 80414 | SAE | 1/8 in | 0.688 in | 0.590 in | 1.653 in | 0.984 in | 0.13 lb |
| 80415D | SAE | 9/64 in | 0.688 in | 0.590 in | 1.653 in | 0.984 in | 0.14 lb |
| 80416 | SAE | 5/32 in | 0.688 in | 0.590 in | 1.653 in | 0.984 in | 0.14 lb |
| 80417 | SAE | 3/16 in | 0.688 in | 0.590 in | 1.653 in | 0.984 in | 0.14 lb |
| 80418 | SAE | 7/32 in | 0.688 in | 0.590 in | 1.653 in | 0.984 in | 0.14 lb |
| 80419 | SAE | 1/4 in | 0.688 in | 0.590 in | 1.653 in | 0.984 in | 0.14 lb |
| 80420 | SAE | 5/16 in | 0.688 in | 0.590 in | 1.850 in | 1.181 in | 0.14 lb |
| 80421 | SAE | 3/8 in | 0.750 in | 0.750 in | 1.850 in | 1.181 in | 0.14 lb |
| 80422 | Metric | 2 mm | 0.688 in | 0.590 in | 1.653 in | 0.984 in | 0.15 lb |
| 80423 | Metric | 2.5 mm | 0.688 in | 0.590 in | 1.653 in | 0.984 in | 0.09 lb |
| 80424 | Metric | 3 mm | 0.688 in | 0.590 in | 1.653 in | 0.984 in | 0.11 lb |
| 80425 | Metric | 4 mm | 0.688 in | 0.590 in | 1.653 in | 0.984 in | 0.13 lb |
| 80426 | Metric | 5 mm | 0.688 in | 0.590 in | 1.653 in | 0.984 in | 0.13 lb |
| 80427 | Metric | 6 mm | 0.688 in | 0.590 in | 1.653 in | 0.984 in | 0.13 lb |
| 80428D | Metric | 7 mm | 0.688 in | 0.590 in | 1.850 in | 1.181 in | 0.14 lb |
| 80429 | Metric | 8 mm | 0.688 in | 0.590 in | 1.850 in | 1.181 in | 0.14 lb |
| 80430 | Metric | 9 mm | 0.750 in | 0.750 in | 1.968 in | 1.181 in | 0.14 lb |
| 80431 | Metric | 10 mm | 0.750 in | 0.750 in | 1.968 in | 1.181 in | 0.14 lb |
| 80432 | Metric | 11 mm | 0.750 in | 0.750 in | 1.968 in | 1.181 in | 0.14 lb |
| 80433 | Metric | 12 mm | 0.750 in | 0.750 in | 1.968 in | 1.181 in | 0.14 lb |

3/8" Drive Mid Length Hex Bit Sockets

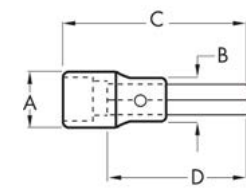
- Mid-length hex bit for additional access to hard-to-reach fasteners
- S2 steel insert bits offer maximum strength
- Heat-treated socket bases provide lasting durability
- Double line (SAE) and knurled (metric) ring help easily identify standard and metric sockets
- Hard stamped size markings
- Bright, full polish chrome finish easily wipes clean and resists corrosion
- Meets or exceeds ASME specifications



| Cat. No. | SAE/Metric | Fastener Size | Dim. A: Drive End | Dim. B: Nose Diameter | Dim. C: Overall Length | Dim. D: Bit Length | Product Weight |
|----------|------------|---------------|-------------------|-----------------------|------------------------|--------------------|----------------|
| 82521 | SAE | 1/8 in | .67 in | .59 in | 2.8 in | 1.97 in | 0.090 lb |
| 82522 | SAE | 9/64 in | 0.67 in | 0.59 in | 2.8 in | 1.97 in | 0.100 lb |
| 82523 | SAE | 5/32 in | 0.67 in | 0.59 in | 2.8 in | 1.97 in | 0.100 lb |
| 82524 | SAE | 3/16 in | 0.67 in | 0.59 in | 2.8 in | 1.97 in | 0.100 lb |
| 82525 | SAE | 7/32 in | 0.67 in | 0.59 in | 2.8 in | 2.05 in | 0.110 lb |
| 82526 | SAE | 1/4 in | 0.67 in | 0.59 in | 2.8 in | 2.05 in | 0.110 lb |
| 82527 | SAE | 5/16 in | 0.67 in | 0.59 in | 2.8 in | 2.05 in | 0.120 lb |
| 82528 | SAE | 3/8 in | 0.71 in | 0.71 in | 2.8 in | 1.93 in | 0.160 lb |
| 82538 | Metric | 3 mm | 0.67 in | 0.59 in | 2.8 in | 1.97 in | 0.090 lb |
| 82539 | Metric | 4 mm | 0.67 in | 0.59 in | 2.8 in | 1.97 in | 0.100 lb |
| 82540 | Metric | 5 mm | 0.67 in | 0.59 in | 2.8 in | 1.97 in | 0.100 lb |
| 82541 | Metric | 6 mm | 0.67 in | 0.59 in | 2.8 in | 2.05 in | 0.110 lb |
| 82542 | Metric | 7 mm | 0.67 in | 0.59 in | 2.8 in | 2.05 in | 0.120 lb |
| 82543 | Metric | 8 mm | 0.67 in | 0.59 in | 2.8 in | 2.05 in | 0.130 lb |
| 82544 | Metric | 9 mm | 0.71 in | 0.71 in | 2.8 in | 1.93 in | 0.160 lb |
| 82545 | Metric | 10 mm | 0.71 in | 0.71 in | 2.8 in | 1.93 in | 0.170 lb |

3/8" Drive Long Length Hex Bit Sockets

- Long length hex bit for additional access to hard-to-reach fasteners
- S2 steel insert bits offer maximum strength
- Heat-treated socket bases provide lasting durability
- Double line (SAE) and knurled (metric) ring help easily identify standard and metric sockets
- Hard stamped size markings
- Bright, full polish chrome finish easily wipes clean and resists corrosion
- Meets or exceeds ASME specifications



| Cat. No. | SAE/Metric | Fastener Size | Dim. A: Drive End | Dim. B: Nose Diameter | Dim. C: Overall Length | Dim. D: Bit Length | Product Weight |
|----------|------------|---------------|-------------------|-----------------------|------------------------|--------------------|----------------|
| 82530 | SAE | 1/8 in | 0.67 in | 0.59 in | 6.14 in | 5.31 in | 0.130 lb |
| 82531 | SAE | 5/32 in | 0.67 in | 0.59 in | 6.14 in | 5.31 in | 0.130 lb |
| 82532 | SAE | 3/16 in | 0.67 in | 0.59 in | 6.14 in | 5.31 in | 0.130 lb |
| 82533 | SAE | 7/32 in | 0.67 in | 0.59 in | 6.14 in | 5.39 in | 0.140 lb |
| 82534 | SAE | 1/4 in | 0.67 in | 0.59 in | 6.14 in | 5.39 in | 0.160 lb |
| 82535 | SAE | 5/16 in | 0.67 in | 0.59 in | 6.14 in | 5.39 in | 0.210 lb |

Continued on next page