

Stamp Selection Guide - ordering the right stamp for all applications



Grade:	Standard	Heavy Duty	Premier	Rhino
Recommended use:	Medium to light duty	Moderate industrial applications	Ideal for prolonged industrial use	Greatest durability and longevity in all applications
Features:	Standard size shank for hand striking	Oversized shank to deliver more consistent stamp control	Larger shank for better impression and tempered for durability and safety	Largest shank for best impression fully tempered shank Highest quality alloy steel for toughest materials, even stamps materials up to 50 HRC
Character Size	Shank Size			
1/32" .7938mm	-	1/4" x 2-3/8"	5/16" x 2-1/2"	-
1/16" 1.5875mm	1/4" x 2-3/8"	5/16" x 2-1/2"	5/16" x 2-1/2"	-
3/32" 2.7781mm	1/4" x 2-3/8"	5/16" x 2-1/2"	5/16" x 2-3/4"	-
1/8" 3.1750mm	1/4" x 2-3/8"	5/16" x 2-1/2"	3/8" x 2-3/4"	1/2" x 3-1/2"
5/32" 3.9688mm	-	3/8" x 2-3/4"	7/16" x 2-3/4"	-
3/16" 4.7625mm	5/16" x 2-3/8"	3/8" x 2-3/4"	7/16" x 2-3/4"	9/16" x 3-1/2"
1/4" 6.3500mm	3/8" x 2-5/8"	7/16" x 3"	1/2" x 3"	5/8" x 3-1/2"
5/16" 7.9375mm	-	9/16" x 3"	9/16" x 3-1/8"	-
3/8" 9.5250mm	1/2" x 2-3/4"	9/16" x 3-1/8"	5/8" x 3-1/8"	3/4" x 3-1/2"
1/2" 12.7000mm	5/8" x 3"	3/4" x 3-3/4"	7/8" x 4"	-
5/8" 15.875mm	-	3/4" x 3-3/4"	7/8" x 4"	-
3/4" 19.05mm	-	7/8" x 3-3/4"	7/8" x 4"	-
1" 25.4mm	-	1-1/4" x 1 x 4-1/2"	1-1/4" x 1-1/4" x 4-1/2"	-

Grade of Stamp	Frequency of Use	Wood	Leather	Aluminum	Brass	Sheet Metal	Cold Roll Steel	Stainless Steel	Water, Oil, Hardened Steel	Heat Treated Material up to 50 HRC
Standard	Occasional	Not Recommended	Not Recommended	Not Recommended	Not Recommended	Not Recommended	Not Recommended	Not Recommended	Not Recommended	Not Recommended
Heavy Duty	Moderate	Better	Better	Better	Better	Better	Good	Not Recommended	Not Recommended	Not Recommended
Premier	Every Day	Better	Better	Better	Better	Better	Better	Better	Good	Not Recommended
Rhino	High Volume	Best	Best	Best	Best	Best	Best	Best	Best	Best

Not Recommended

Good

Better

Best

MARKING



CUSTOM SOLUTIONS AVAILABLE



Steel Letter and Number Stamp Sets - For hand-held, hammer struck applications

Steel Letter Stamp Sets

- Letter sets contain 27 pieces A thru Z plus ampersand (&)
- Tempered shanks for extra safety

Steel Number Stamp Sets

- Number sets contain 9 pieces 0 thru 9 (the 6 is used as a 9)
- Crowned striking surface ensures full force to the center of the stamp & textured shank provides firm easy grip

Steel Letter and Number Combo Stamp Sets

- Contains: A thru Z, ampersand, plus 0 thru 9 (the 6 is used as a 9)
- Fits flat in tool boxes

Refer to page 79 when selecting grade of stamp
Weights included below Item Number



LETTERS

SIZE	1/32"	1/16"	3/32"	1/8"	5/32"	3/16"	1/4"	5/16"	3/8"	1/2"	5/8"	3/4"	1"
Standard	—	20100 (1.46 lbs.)	20150 (1.48 lbs.)	20200 (1.48 lbs.)	—	20250 (2.14 lbs.)	20300 (3.17 lbs.)	—	20350 (5.67 lbs.)	20400 (10.84 lbs.)	—	—	—
Heavy Duty	20741 (1.44 lbs.)	20751 (2.01 lbs.)	20801 (2.11 lbs.)	20851 (2.14 lbs.)	20901 (3.17 lbs.)	20951 (3.11 lbs.)	21051 (4.61 lbs.)	21101 (7.65 lbs.)	21151 (7.55 lbs.)	21201 (16.64 lbs.)	21251 (16.55 lbs.)	21252 (22.45 lbs.)	21253 (62.7 lbs.)
Premier	22000 (1.44 lbs.)	22050 (2.10 lbs.)	22100 (2.3 lbs.)	22150 (3.18 lbs.)	22200 (4.16 lbs.)	22250 (4.14 lbs.)	22350 (5.75 lbs.)	22400 (7.52 lbs.)	22450 (10.69 lbs.)	22550 (17.54 lbs.)	22600 (24.33 lbs.)	—	22750 (25.25 lbs.)
Rhino	—	—	—	21730 (7.77 lbs.)	—	21750 (8.54 lbs.)	21760 (10.20 lbs.)	—	21770 (14.71 lbs.)	—	—	—	—
Lower Case	—	—	—	—	—	20260 (4.4 lbs.)	—	—	20360 (10.2 lbs.)	—	—	—	—
Spanish	—	—	—	20220 (4.7 lbs.)	—	20270 (7.0 lbs.)	20320 (7.0 lbs.)	—	—	—	—	—	—

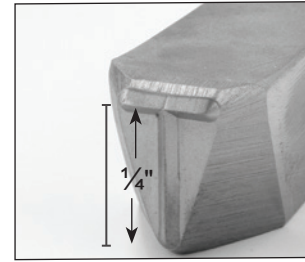
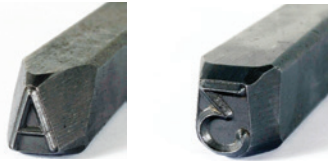
NUMBERS

SIZE	1/32"	1/16"	3/32"	1/8"	5/32"	3/16"	1/4"	5/16"	3/8"	1/2"	5/8"	3/4"	1"
Standard	—	20501 (0.50 lbs.)	20521 (0.50 lbs.)	20541 (0.51 lbs.)	—	20561 (0.72 lbs.)	20581 (1.07 lbs.)	—	20601 (1.90 lbs.)	20621 (3.41 lbs.)	—	—	—
Heavy Duty	21301 (0.50 lbs.)	21320 (0.72 lbs.)	21340 (0.73 lbs.)	21360 (0.73 lbs.)	21380 (1.07 lbs.)	21400 (1.06 lbs.)	21440 (1.56 lbs.)	21460 (2.57 lbs.)	21480 (2.58 lbs.)	21500 (2.70 lbs.)	21520 (5.80 lbs.)	21521 (7.3 lbs.)	21522 (20.1 lbs.)
Premier	22801 (0.50 lbs.)	22821 (0.72 lbs.)	22841 (0.79 lbs.)	22861 (1.07 lbs.)	22881 (1.39 lbs.)	22901 (1.40 lbs.)	22941 (1.93 lbs.)	22961 (2.55 lbs.)	22981 (3.38 lbs.)	23021 (6.31 lbs.)	23041 (7.97 lbs.)	—	24001 (17.75 lbs.)
Rhino	—	—	—	21830 (2.61 lbs.)	—	21850 (3.17 lbs.)	21870 (3.82 lbs.)	—	21880 (5.27 lbs.)	—	—	—	—

LETTERS AND NUMBERS COMBO SET

SIZE	1/32"	1/16"	3/32"	1/8"	5/32"	3/16"	1/4"	5/16"	3/8"	1/2"	5/8"	3/4"	1"
Standard	—	20622 (2.88 lbs.)	20623 (2.85 lbs.)	20624 (2.95 lbs.)	—	20625 (3.78 lbs.)	20626 (5.14 lbs.)	—	—	20628 (12.18 lbs.)	—	—	—
Heavy Duty	21622 (2.84 lbs.)	21623 (3.75 lbs.)	21624 (3.71 lbs.)	21625 (3.76 lbs.)	21626 (5.08 lbs.)	21627 (5.13 lbs.)	21628 (7.68 lbs.)	21629 (9.5 lbs.)	21630 (12.25 lbs.)	21631 (29.75 lbs.)	21632 (22 lbs.)	21633 (28.95 lbs.)	21634 (80.9 lbs.)
Premier	24002 (3.67 lbs.)	24003 (3.68 lbs.)	24004 (3.93 lbs.)	24005 (5.13 lbs.)	24006 (7.07 lbs.)	24007 (7.11 lbs.)	24008 (9.07 lbs.)	24009 (11.51 lbs.)	—	21633 (23.65 lbs.)	—	24011 (31.75 lbs.)	24012 (77.15 lbs.)

Single Pieces and New 440C Stainless Steel Stamps



Single Pieces

- Individual Stamps
- Choice of Standard, Heavy Duty, Premier, Rhino, Reversed, Round Face, and Dot Design
- To order Single pieces use the letter set part number of the size and grade, followed by the character you wish to order

FOR EXAMPLE:

- 1/8" Standard Grade Letter "H" is item number 20200H
- 1/8" Standard Grade Number "5" is item number 202005

The size of the stamp describes the actual dimension of the mark that will be made by the stamp.

Refer to page 79 when selecting grade of stamp
Weights included below Item Number

SINGLE PIECE STAMPS

SIZE	1/32"	1/16"	3/32"	1/8"	5/32"	3/16"	1/4"	5/16"	3/8"	1/2"	5/8"	1"
Standard	—	20100 (0.04 lbs.)	20150 (0.04 lbs.)	20200 (0.04 lbs.)	—	20250 (0.06 lbs.)	20300 (0.10 lbs.)	—	20350 (0.20 lbs.)	20400 (0.32 lbs.)	—	—
Heavy Duty	20741 (0.04 lbs.)	20751 (0.04 lbs.)	20801 (0.06 lbs.)	20851 (0.06 lbs.)	20901 (0.10 lbs.)	20951 (0.16 lbs.)	21051 (0.16 lbs.)	21101 (0.20 lbs.)	21151 (0.26 lbs.)	21201 (0.54 lbs.)	21251 (0.56 lbs.)	—
Premier	22000 (0.06 lbs.)	22050 (0.06 lbs.)	22100 (0.08 lbs.)	22150 (0.10 lbs.)	22200 (0.14 lbs.)	22250 (0.14 lbs.)	22350 (0.18 lbs.)	22400 (0.26 lbs.)	22450 (0.32 lbs.)	22550 (0.58 lbs.)	22600 (0.82 lbs.)	22750 (1.70 lbs.)
Rhino	—	—	—	21730 (0.06 lbs.)	—	21750 (0.30 lbs.)	21760 (0.38 lbs.)	—	21770 (0.50 lbs.)	—	—	—
Reversed	25000 (0.06 lbs.)	25050 (0.06 lbs.)	25100 (0.06 lbs.)	25150 (0.10 lbs.)	25200 (0.14 lbs.)	25250 (0.14 lbs.)	25300 (0.20 lbs.)	25350 (0.26 lbs.)	25400 (0.32 lbs.)	25450 (0.58 lbs.)	—	—
Round Face	—	25700 (0.06 lbs.)	25750 (0.06 lbs.)	25800 (0.10 lbs.)	—	25850 (0.14 lbs.)	25900 (0.20 lbs.)	—	25950 (0.32 lbs.)	26000 (0.58 lbs.)	—	—
Dot Design	—	—	—	26200 (0.10 lbs.)	—	26250 (0.14 lbs.)	26300 (0.20 lbs.)	—	26350 (0.30 lbs.)	26400 (0.56 lbs.)	—	—

NEW 440C STAINLESS STEEL STAMPS

- Withstands highly corrosive environments
- Ideal for industries where cross contamination and corrosion resistance are critical
- Letter sets contain 27 pieces A thru Z plus ampersand (&)
- Number sets contain 9 pieces 0 thru 9 (the 6 is used as a 9)

Item No.	Description	Weight
29100	1/8" Stainless Steel Letter Set	3.18 lbs.
29150	1/8" Stainless Steel Number Set	1.91 lbs.
29175	1/8" Stainless Steel Combo Letter/Number Set	5.13 lbs.
29200	1/4" Stainless Steel Letter Set	6 lbs.
29250	1/4" Stainless Steel Number Set	2.02 lbs.
29275	1/4" Stainless Steel Combo Letter/Number Set	9.46 lbs.
29300	3/8" Stainless Steel Letter Set	10.69 lbs.
29350	3/8" Stainless Steel Number Set	2.14 lbs.
29375	3/8" Stainless Steel Combo Letter/Number Set	13.85 lbs.

