

OIL DRAIN HOSES

Prevents spillage for filter change on vehicles with one-way valve housing caps. Tool screws into cap to drain oil. 20" (51cm) hose with plastic end cap. Compare #2087 to Factory Tool: T40057.

No.	Description
2087	VW, Audi
2088	Toyota, Lexus



4334 CUMMINS OIL FILTER PLUG

Plugs into oil filter preventing oil from spilling when removing oil filter on 2013-2018 Dodge RAM 6.7L Cummins Diesel Heavy-Duty 2500/3500 trucks. Enables Pre-lube of oil filter before installation. U-handle for easy grip. Ridged side for easy removal from oil filter with locking pliers.



2500 7 PC. 6 PT LUBE WRENCH SET

For male hex drain plugs. Offset head w/ anti-slip rubber grip. Chrome vanadium steel.

No.	Size
2576	13mm
2584	14mm
2585	15mm
2586	16mm
2589	17mm
2578	19mm
2579	22mm



2049 2 PC. SQUARE HEAD DRAIN PLUG SOCKET SET

Serves transfer cases, engine oil pans, manual trans & differential drain/fill plugs on Ford, Jeep, Volvo, Peugeot & more. 3/8" drive.

No.	Size
2036	8mm
2037	10mm



8762 EURO OIL DRAIN PLUG WRENCH - 14MM X 17MM

Serves BMW, Benz (107), Audi & VW, including crankcases & transmissions. Double 14mm male hex & 17mm female hex offset ends. Chrome-moly forged steel. OAL: 9-1/2" (24cm).



8764 VW/AUDI OIL DRAIN PLUG WRENCH

16mm x 12 point (XZN) & 19mm hex offset ends, services plugs on VW, Audi, Porsche. Chrome-moly forged steel. OAL: 9-1/4" (23cm).



1037 VW/AUDI OIL DRAIN PLUG TOOL

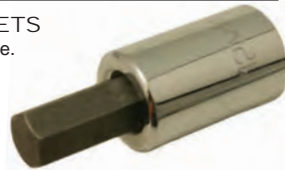
Remove plastic oil drain plugs without damage. Widened thumb-grip allows proper torque. Compare to Audi Factory Tool: T10549. Patent No. D804,264.



METRIC HEX DRAIN PLUG SOCKETS

High-torque 2 pc. bit socket design w/ 1/2" drive.

No.	Size
2052	12mm
2054	14mm
2056	17mm
2058	19mm



2048 10MM FEMALE SQUARE HEAD SOCKET

Serves male square plugs on BMW, Ford, Toyota, Renault. 3/8" drive.



2039 VW/AUDI DRAIN PLUG SOCKET - 16MM XZN TAMPERPROOF

12 point, for oil & transmission drain plugs & fasteners on VW, Audi & Porsche. Fits Detroit Diesel flywheel bolts, front crank pulleys & head bolts. 1/2" drive. Compare to Factory Tool: 3357.



1320 8 PC. DRAIN PLUG KIT

For removing plastic oil, coolant, and other drain plugs. Won't damage drain plugs. Includes a T-handle with a square drive ball lock and 7 adapters. Packed in blow mold case. Visit ctatools.com for application details.

No.	Application
5049	5 Pc. Set (1324-1328)
1321	GM (#1)
1322	Ford (#2)
1323	Ford (#3)
1324	Ford/Lincoln (#4)
1325	Mercedes (#5)
1326	Ford/Peugeot/Citroen/Lincoln/Opel/Toyota (#6)
1327	BMW (#7)
1328	VW, Audi, Porsche (#8)
1330	3 Pc. Set (1321-1323)



NEW!

9250 CADILLAC DRAIN PLUG & OIL FILTER SOCKET - T45 TORX®

Low profile for oil filter housings & drain plugs on Cadillac CTS 2003-2004. 3/8" drive w/ 5/8" hex adapter.



9573 SUBARU/GM DRAIN PLUG SOCKET - T70 TORX®

5MT 2004+ WRX, 2003+ Legacy, Forester, 2007 STI clutch side trans bolt & brake rotor retaining bolts on 2003+ GM C4500.



1136 JEEP TRANSMISSION DRAIN PLUG SOCKET - 14MM HEX

Stubby for clearance on 2012+ Jeep Wrangler 6MT. OAL: 30mm



DIFFERENTIAL PLUG EXTRACTORS

For removal of female style plugs w/ damaged holes. Fluted design.

No.	Applications
9035	5/16" plugs w/ 1/4" square hole
9037	1/2" plugs w/ 3/8" square hole
9038	3/4" plugs w/ 1/2" square hole



THREAD RE-CONDITIONING TAPS

ISO type alloy steel tap to clean oil pan & other threads, transfer case & transmission drain plugs. Use w/ CTA #9660 & 9665 Tap Holders.

No.	Size	Application
18111	12mm x 1.25	Infiniti, Lexus, Nissan, Toyota
18112	12mm x 1.75	Ford, GM, GMC, Saturn
18113	1/2" - 20	Dodge, Ford, GM, GMC, Jeep, Mitsubishi
18114	14mm x 1.50	Ford, Honda, Hyundai, Kia, Mazda
18115	12mm x 1.50	BMW, Mercedes Benz
18116	14mm x 1.25	Jeep, Ford Truck
18117	16mm x 1.50	Dodge, Jaguar
18118	18mm x 1.50	Dodge Truck, Toyota, Volvo
18119	22mm x 1.50	Dodge Truck, BMW



18200 11 PC. THREAD CLEANING ASSORTMENT

Includes one each of the following taps: 12mm x 1.25, 12mm x 1.75, 1/2"-20, 14mm x 1.50, 12mm x 1.50, 14mm x 1.25, 16mm x 1.50, 18mm x 1.50, 22mm x 1.50, plus one each #9660 & 9665 tap holders. All packed in plastic tray organizer w/ protective compartments.



5070 ADJUSTABLE TAP HOLDER

Adjustable to fit tap sizes: M6 - M12. Use w/ CTA #18111, 18112, 18113, 18114, 18115 & 18116 & other taps. 3/8" square drive.

NEW!



TAP HOLDERS

For use w/ thread reconditioning taps. Holds tap for proper alignment in any direction and frees hand. 3/8" drive.

No.	Description
9660	Small - Use w/ #18111, 18112, 18113 & 18115
9665	Large - Use w/ #18114 & 18116

