

# SRIPro™ SPOT REPAIR GUN



**Includes:**

- 1.0mm fluid tip
- TS1 high efficiency & HS1 HVLP air caps
- Starter set of 9 oz. disposable cups: 4 lids and liners
- 1 reusable sleeve and lid
- 1 gun adapter
- 1 measuring guide
- 1 300-micron barrel paint filter
- 1 125-micron disk filter
- 3 oz. plastic cups
- 4 colored identification rings

Waterborne compatible when using a plastic or disposable cup system.



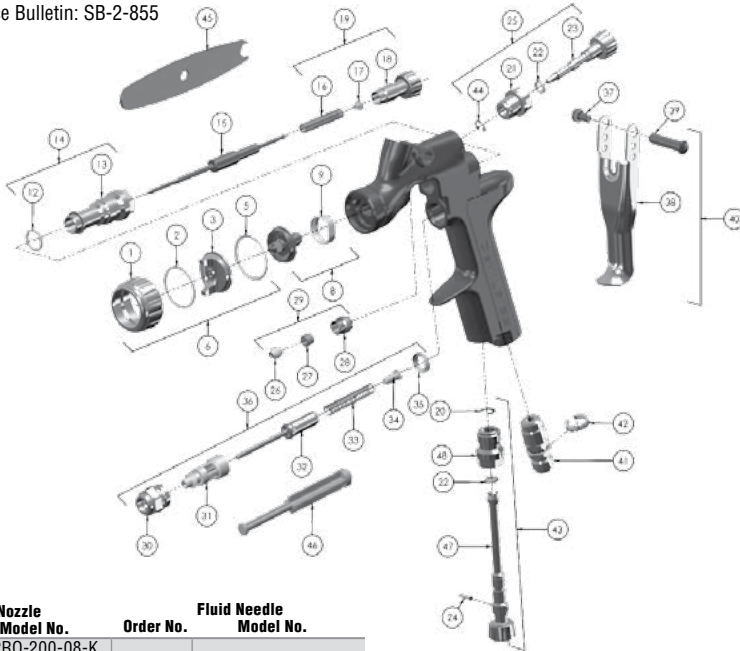
Order No.	Model No.	Fluid Tip (mm)	Cup	Air Cap
803311	SRIPRO-635G-10	1.0mm	3 oz. & 9 oz. Disposable Cups	TS1 HE, HS1 HVLP

**SRIPro™ Spot Repair Gun Air Caps**

<b>HS1 air cap (HVLP)</b>	<b>Primers, basecoats, clearcoats, single stage, and low VOC</b> Air Cap Order No. <b>803296</b> Air Cap Model No. <b>SRIPRO-101-HS1</b> 29 PSI inlet 4.8 CFM	<b>Air Cap Pattern</b> ¼ to 9"
<b>TS1 air cap (HE)</b>	<b>Basecoats, clearcoats, primers, single stage, and low VOC</b> Air Cap Order No. <b>803297</b> Air Cap Model No. <b>SRIPRO-100-TS1</b> 29 PSI inlet 3.5 CFM	<b>Air Cap Pattern</b> ¼ to 9"
<b>Fluid tips</b>	0.8mm, <b>1.0mm</b> , 1.2mm (Included tip size shown in bold)	



Refer to Service Bulletin: SB-2-855



**CHART 1**

Order No.	Fluid Nozzle Model No.	Order No.	Fluid Needle Model No.
803298*	SRIPRO-200-08-K	803302	SRIPRO-300-0810-K
803299*	SRIPRO-200-10-K		
803300*	SRIPRO-200-12-K	803303	SRIPRO-300-1214-K

\*Includes 1 SRIPRO-2 separator

**NOTE:** When replacing the fluid nozzle or fluid needle, replace both at the same time. Torque to 80–90 in-lbs (9–10 Nm). Don't overtighten the fluid nozzle. Use SRI-50 6mm wrench supplied with the gun and check with a torque wrench.

**IMPORTANT NOTE:** The SRIPro and older SRI fluid nozzles and air caps **ARE NOT INTERCHANGEABLE** between the 2 models. Any attempt to fit fluid nozzles or caps onto the wrong spray gun may cause damage to the parts or the spray gun body and invalidate the warranty.

The SRIPro Spray Gun Repair Kit (702736) contains all the parts indicated with a •

The SRIPro Seal & Pin Kit (192229) contains all the parts indicated with a †

Ref. No.	Order No.	Model No.	Description	Ind. Parts Req.
1			Air Cap Retaining Ring	1
2			Slip Ring	1
3			Air Cap	1
5		SRI-35-K	Retaining Ring Seal	1
6		See chart above	Air Cap & Ring	1
8		See Chart 1	Fluid Nozzle	1
9	803304	SRIPRO-2-K5	Separator	1
•12			Body Bushing Seal	1
13			Body Bushing	1
14	702728	702728	Body Bushing & Seal	1
15		See Chart 1	Fluid Needle	1
16			Needle Spring	1
•17			Needle Spring Pad	1
18			Fluid Adjusting Knob	1
19	803305	PRO-3-K	Fluid Adjusting Knob, Spring & Pad Kit	1
•†20			Retaining Clip	1
21			Spreader Valve Body	1
•†22			Spreader Valve Seal	2
23			Spreader Valve Adjusting Knob	1
•†24			Valve Pin	1
25	803306	SRIPRO-401-K	Spreader Valve Assembly	1
•26			Needle Packing	1
•27			Packing Spring	1
28			Packing Nut	1
29	702731	702731	Packing, Spring & Packing Nut Kit	1
30			Air Valve Body	1
31			Air Valve Cage	1
32			Air Valve Poppet	1
33			Air Valve Spring	1
34			Air Valve Spring Pad	1
35	803307	SN-34-K5	Air Valve Seal	1
36	702732	702732	Air Valve Assembly	1
•37			Trigger Stud Screw (T20 TORX)	1
38			Trigger	1
•39			Trigger Stud	1
40	803308	SN-42-K	Trigger, Stud & Screw Kit	1
41	803309	SN-40-K	Air Inlet	1
42	702735	702735	Color ID Ring Kit (4 colors)	1
43	803310	PRO-404-K	Airflow Valve	1
44			Circlip	1
45			Wrench	1
46			Air Valve Service Tool (included in 702732)	1
47			Air Flow Valve Knob	1