

Accessories

Pressure Cups



Low Pressure Cup Assembly

PN 6680

- Designed for use with Sharpe pressure feed
- 1 quart capacity
- Clamp type assembly
- Order with 6 ft hose (PN 7130)

- Inlet 3/8 in npsm (f) swivel nut
- Max Pressure: 10 psi
- Cup Assembly (PN 6610)
- Replacement Gasket (PN 20994)
- Air 1/4 in NPS (m)



Model 7004 2-Quart Pressure Cup

PN 7004

- For use with any pressure feed spray gun when more than one quart of material is required
- Replacement gasket (PN U42002)
- Wide mouth for easy cleanup
- Cup pressure regulator allows for fluid adjustment from 0-50 psi

Pressure Pots



2.5 Gallon Pressure Pot Single Regulator

PN 24A555

- 1610 Air regulator used to regulate fluid pressure
- Tank capacity: 2.5 gal (9.5 l)
- Accessory hose to use 7210 or 7220
- Includes one (1) tank liner
- Replacement tank liner: 112077 (5-pack)
112078 (25-pack)

- Max working pressure: 50 psi (350 kPa, 3.5 bar)
- Pressure relieve valve setting: 50 psi (350 kPa, 3.5 bar)
- Air inlet size: 1/4 npt (m)
- Fluid outlet size: 3/8 npsm (m)
- Air outlet size: 1/4 npt (m)
- Height: 21 in (533 mm)
- Weight: 11 lb (5 kg)
- Instruction Manual: PN 31 3291
- Reference p. 50

NEW



2.5 Gallon Pressure Pot Dual Regulators

PN 24A557

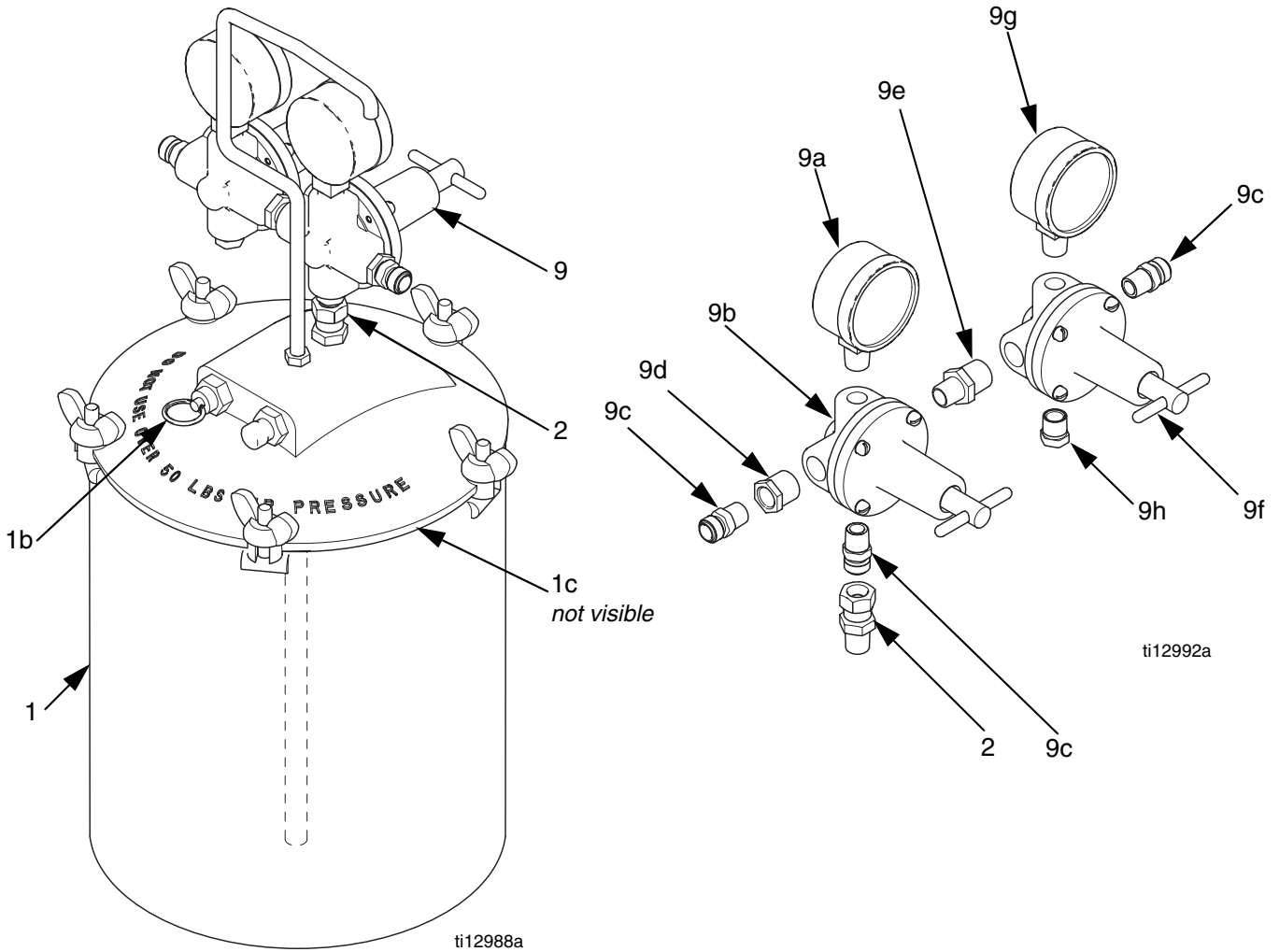
- 1610 Air regulator used to regulate fluid pressure
- 1630 Air regulator used to regulate fluid pressure
- Tank capacity: 2.5 gal (9.5 l)
- Accessory hose to use 7210 or 7220
- Includes one (1) tank liner
- Replacement tank liner: 112077 (5-pack)
112078 (25-pack)

- Max working pressure: 50 psi (350 kPa, 3.5 bar)
- Pressure relieve valve setting: 50 psi (350 kPa, 3.5 bar)
- Air inlet size: 1/4 npt (m)
- Fluid outlet size: 3/8 npsm (m)
- Air outlet size: 1/4 npt (m)
- Height: 21 in (533 mm)
- Weight: 11 lb (5 kg)
- Instruction Manual: PN 31 3291
- Reference p. 51

REFERENCE

Model 24A557

Parts / Pièces / Piezas



Ref. No.	Part No.	Description	Qty.	Ref. No.	Part No.	Description	Qty.
1	-----	BARE PRESSURE TANK, includes items 1a-1c	1	9b	1610	AIR REGULATOR, see manual 310605 for parts	1
1a		TANK LINER, low density polyethylene (not shown)		9c	9993	FITTING, air inlet, 1/4 npt x 1/4 npt straight	3
	112077	5 pack of tank liners	1	9d	119030	FITTING, reducer, 3/8 npt(m) x 1/4 npt(f)	1
	112078	25 pack of tank liners	1	9e	157350	ADAPTER, 3/8 npt x 1/4 npt	1
1b	103996	VALVE, pressure relief; 50 psi (350 kPa, 3.5 bar)	1	9f	1630	AIR REGULATOR, see manual 310605 for parts	1
1c	244953	GASKET, cover, polyethylene (package of 3)	1	9g	8230	PRESSURE GAUGE	1
2	156823	UNION, swivel	1	9h	10028	PLUG, regulator	1
9	U10004	REGULATOR ASSEMBLY, includes items 9a-9h)	1				
9a	8220	GAUGE, air pressure, 0-100 psi (0-700 kPa, 0-7 bar)	1				

----- Part is not sold separately.

Note: For single regulator use, replace fitting 9e with fitting 9c from regulator 9f.