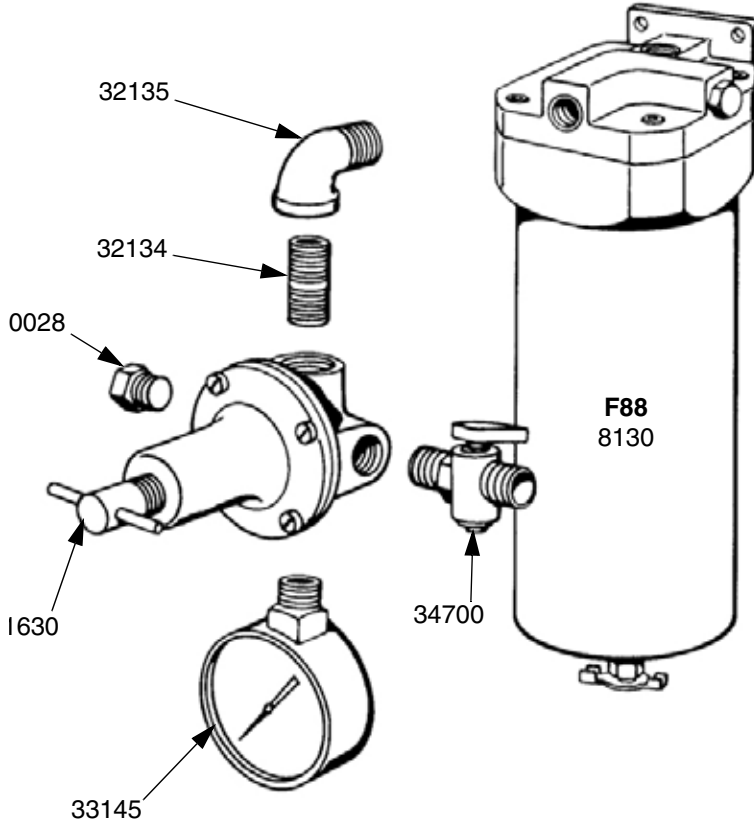


REFERENCE

REPLACEMENT PARTS DRAWINGS INDEX

880A Air Control Unit Part No. 6950

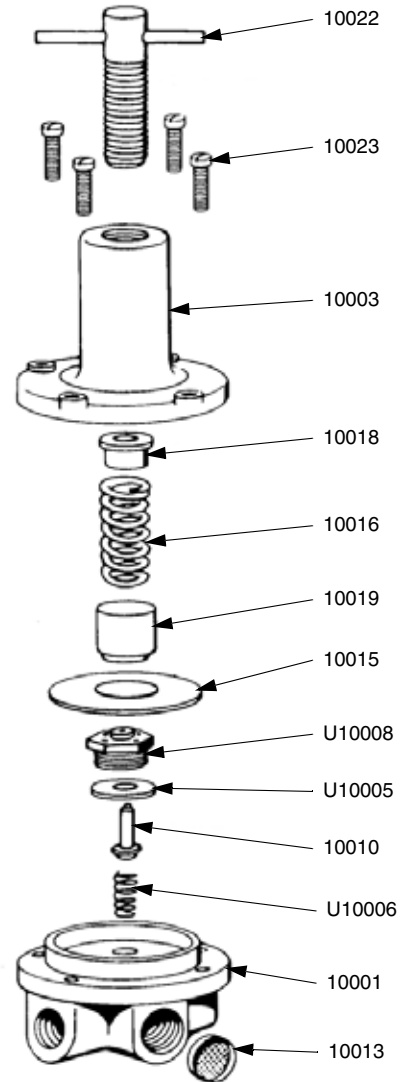


Part No.	Description
1630	Air Regulator
8130	Air Filter
1002	8 Plug
32134	Nipple
32135	Elbow
33145	Gauge
34700	Air Cock

Maximum Working
Pressure: 160 psi
(1.1 MPa, 11 bar)

Air Regulator Part No. 1610

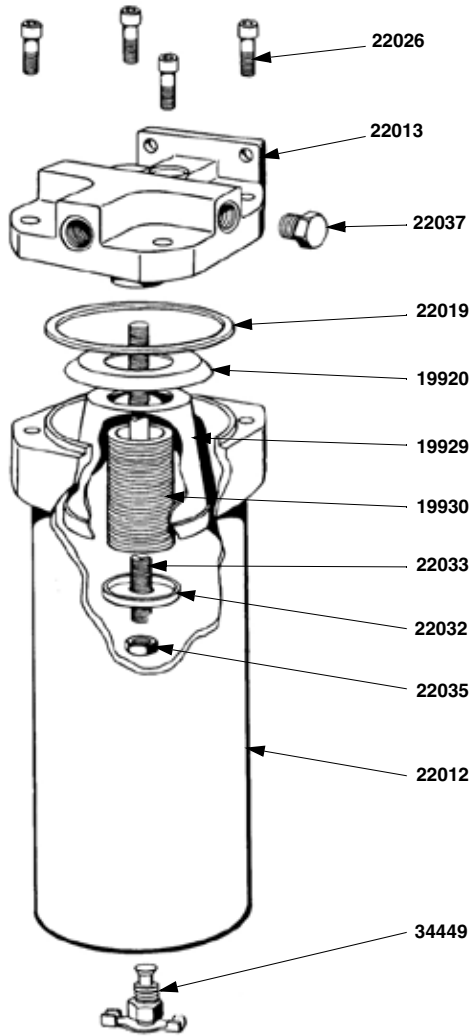
2 Regulated Outlets
1 Main Line Outlet (bypass)



REFERENCE

REPLACEMENT PARTS DRAWINGS INDEX

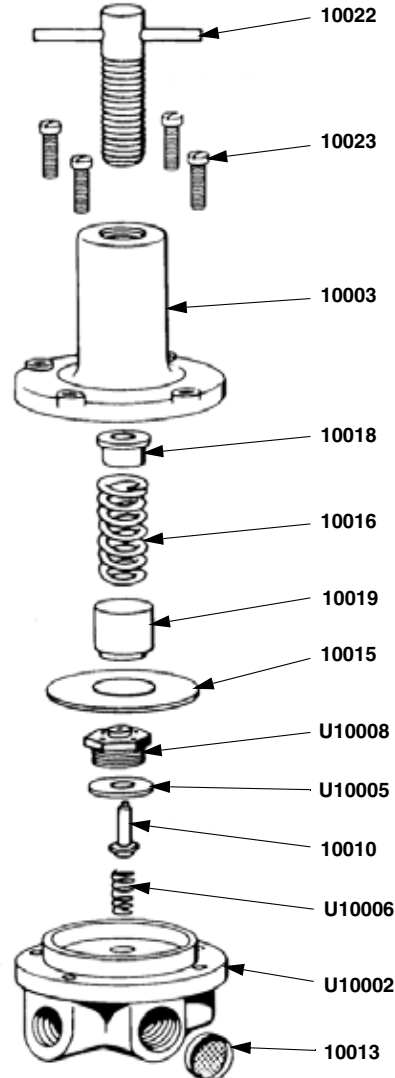
Model 606 Air Filter Part No. U06710



Part No.	Description
22026	Screw
22013	Bottle Lid
22037	Plug
22019	Gasket
19920	Washer
19929	Shield
19930	Filter Element
22033	Rod Assembly
22032	Retainer
22035	Nut
22012	Mach Filter Bottle
34449	Air Cock Regulator Valve

Maximum Working
Pressure: 160 psi
(1.1 MPa, 11 bar)

18C-3R Air Regulator Part No. 1630



Part No.	Description
10022	Adjusting Screw
10023	Screw
10003	Bonnet
10018	Washer Spring
10016	Pressure Spring
10019	Vibration Dampener
10015	Diaphragm
10008	Valve Body
10005	Valve Seat
10010	Valve
10006	Valve Spring
10002	Body
10013	Brass Screen

Maximum Working
Pressure: 160 psi
(1.1 MPa, 11 bar)