



1/4" Drive Impact Socket Set



1/4"

6s

No. 9772

1/4" Drive Master Set



This set contains the most popular sockets in our 1/4" surface drive line, plus 3 extensions, universal joint, 1/4" to 3/8" adapter and 1/4" Hex to 1/4" Square Adapter. Packaged in an all new compact, low profile molded storage case. This set is great for use on impact wrenches, air ratchets as well as hand ratchets.



72 piece set contents:

10 Pieces Standard Length:

3/16", 7/32", 1/4", 9/32", 5/16", 11/32", 3/8", 7/16", 1/2", 9/16"

10 Pieces Deep Length:

3/16", 7/32", 1/4", 9/32", 5/16", 11/32", 3/8", 7/16", 1/2", 9/16"

14 Pieces Metric Standard Length:

4mm, 4.5mm, 5mm, 5.5mm, 6mm, 7mm, 8mm, 9mm, 10mm, 11mm, 12mm, 13mm, 14mm, 15mm

14 Pieces Metric Deep Length:

4mm, 4.5mm, 5mm, 5.5mm, 6mm, 7mm, 8mm, 9mm, 10mm, 11mm, 12mm, 13mm, 14mm, 15mm

6 Pieces Standard Universal:

1/4", 5/16", 3/8", 7/16", 1/2", 9/16"

12 Pieces Metric Standard Universal:

5mm, 5.5mm, 6mm, 7mm, 8mm, 9mm, 10mm, 11mm, 12mm, 13mm, 14mm, 15mm

1 Piece Each:

2", 4", & 6" Extensions
1/4" Universal Joint
1/4" F. x 3/8" M. Adapter
1/4" Hex x 1/4" Square Adapter

Molded Storage Case

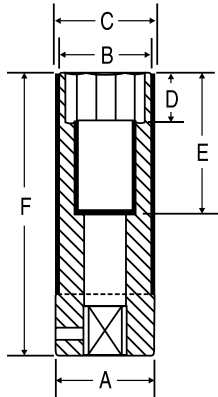


1/2" Drive Wheel/Nut Protector Impact Sockets



6 1/2" Drive Extra-Thin Wall Wheel/Nut Protector Sockets SAE MM

These unique extra-thin wall impact sockets are for use on alloy wheels with decorative lug nuts. They feature protective (color-coded) plastic sleeves and internal plastic inserts to prevent damage to expensive alloy wheels and decorative lug nuts. They should be used only on passenger and light truck wheel nuts. USE ONLY WITH 1/2" DRIVE AIR TOOLS. DO NOT USE REDUCING ADAPTERS. Available individually or in Sets below.



Item Number	Hex Size	Sleeve Color	Dimensions (Inches)					
			A	B	C	D	E	F
Fractional Sizes								
*2024TP	3/4"	Yellow	1.10	1.02	1.10	.71	1.75	3.15
*2026TP	13/16"	Dark Green	1.18	1.10	1.18	.91	1.75	3.15
*2028TP	7/8"	Purple	1.26	1.18	1.26	.91	1.75	3.15
*2030TP	15/16"	Tan	1.34	1.26	1.26	.91	1.75	3.07
*2032TP	1"	Light Blue	1.42	1.34	1.34	.91	1.75	3.07
*2034TP	1-1/16"	Light Green	1.50	1.42	1.42	.91	1.75	3.07
Metric Sizes								
*2017MTP	17mm	Red	1.02	.95	1.02	.63	1.75	3.15
*2019MTP	19mm	Dark Blue	1.10	1.02	1.10	.71	1.75	3.15
*2021MTP	21mm	Gray	1.18	1.10	1.18	.91	1.75	3.15
*2022MTP	22mm	Orange	1.26	1.16	1.24	.91	1.75	3.15
*2023MTP	23mm	Brown	1.26	1.20	1.28	.91	1.75	3.15

*Extra-Thin Wall Impact Sockets are not covered by the GP Warranty.

6 No. 1511TP* 1/2" Drive Extra-Thin Wall Wheel/Nut Protector Socket Set SAE MM



11 piece set contents: (All Impact Sockets listed above)

2024TP 3/4"	2017MTP 17mm
2026TP 13/16"	2019MTP 19mm
2028TP 7/8"	2021MTP 21mm
2030TP 15/16"	2022MTP 22mm
2032TP 1"	2023MTP 23mm
2034TP 1-1/16"		Molded Storage Case

*Extra-Thin Wall Impact Sockets are not covered by GP Warranty.

6 No. 1505TP* 1/2" Drive Extra-Thin Wall Wheel/Nut Protector Socket Set SAE



Set includes five (5) of the most popular fractional sizes listed above:

5 piece set contents:

3/4", 13/16", 7/8", 1" & 1-1/16"
Molded Storage Case

*Extra-Thin Wall Impact Sockets are not covered by GP Warranty.

6 No. 1503TP* 1/2" Drive Extra-Thin Wall Wheel/Nut Protector Socket Set MM



Set includes three (3) of the most popular metric sizes listed above:

3 piece set contents:

17mm, 19mm, 21mm
Molded Storage Case

*Extra-Thin Wall Impact Sockets are not covered by GP Warranty.

