



*Impact Sockets,
Chisels & Attachments*

EVERYTHING IMPACT.®





GP is **EVERYTHING IMPACT**®

Grey Pneumatic (GP) through our distributors supplies the world's automotive, industrial, assembly, mining, maintenance, construction, and energy industries with heavy duty, high quality impact and specialty sockets. We carry a complete line of Impact Socket sets and individuals from 1/4" drive thru 2-1/2" and #5 spline drive with hex sizes up to 8". We also offer a large selection of star impact drivers, impact hex drivers, triple square drivers, torque limiting extensions plus Impact chisels and accessories.

GP sockets and tools are made in Taiwan using the highest quality chrome-molybdenum alloy steel and state-of-the-art manufacturing processes and equipment. Thorough and exact heat treatment, as well as rigid quality control, ensures the correct balance of strength and durability to deliver outstanding performance at the most competitive cost.

GP Tools are available through Automotive and Industrial warehouse distributors, tool stores, mobile tool truck dealers, tire equipment and supply warehouses and other sources that service these markets.

GP offers **Fast and Reliable** service to all of our distributors and their customers.



*GP Tools carry a
Lifetime Warranty.*

All GP Impact Sockets feature the GP "High Torque" Drive

Benefits are:

Increased Strength - Transfers the pressure from the thinnest part of the socket wall toward the thicker section, resulting in increased strength.

Increased Torque - Allows up to 20% more torque to be applied than on standard hex impact sockets.

Easier Access to Tight Areas - The shift in pressure allows us to reduce the socket wall thickness, increasing access to tight areas.

Reduced Wear - Our impact sockets grip the fastener across a broader contact area, reducing the chance of rounding off fasteners.



*GP "High Torque"
drive offers many
benefits.*



*All GP Sockets feature
extra-large size markings
for quick identification.*

EVERYTHING IMPACT®



#5 Spline Drive Impact Sockets



6 No. 9260 #5 Spline Drive Truck Wheel Set SAE MM

A special #5 spline drive set designed for servicing truck wheels. It contains a 13/16" square size for the budd wheel inner cap nuts, a 1-1/2" outer budd nut size that has a "controlled depth" hex end to help prevent contact with the wheel, a 33mm size for 10 hole hub piloted wheels, three (3) deep thin wall sizes, and other regular length impact sockets.



10 piece set contents:

- | | |
|----------------------------------|--------------------------------|
| 5313S 13/16" Square | 5034DT . . . 1-1/16" T.W. Deep |
| 5028R 7/8" Standard | 5036DT . . . 1-1/8" T.W. Deep |
| 5030R 15/16" Standard | 5040DT . . . 1-1/4" T.W. Deep |
| 5032R 1" Standard | 5048DB . . . 1-1/2" Deep Budd |
| 5038R 1-3/16" Standard | Metal Storage Case |
| 5033M 33mm Standard | |

6 No. 9263 #5 Spline Drive Truck Wheel Fractional & Metric Socket Set SAE MM

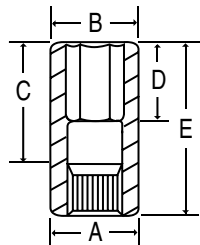
Ten (10) of the most popular fractional and metric impact socket sizes for truck wheel fasteners.



10 piece set contents:

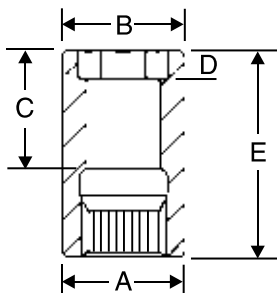
- | | |
|--------------------------------|-----------------------------|
| 5034DT . . . 1-1/16" T.W. Deep | 5041MDT . . 41mm Deep T.W. |
| 5036DT . . . 1-1/8" T.W. Deep | 5313S 13/16" Square |
| 5040DT . . . 1-1/4" T.W. Deep | 5317S 17mm Square |
| 5048DB . . . 1-1/2" Deep Budd | 5321S 21mm Square |
| 5033MD 33mm Deep | Metal Storage Case |
| 5035MDT . . . 35mm Deep T.W. | |

6 #5 Spline Drive Deep Sockets SAE MM



Item Number	Hex Size	Dimensions (Inches/Millimeters)				
		A	B	C	D	E
5033MD	33mm	55	55	78	54	108
5036MD	36mm	57	57	78	54	108
5046D	1-7/16"	2.36	2.36	3.07	1.02	4.25
5048DS	1-1/2"	2.36	2.36	2.87	1.97	4.06
5052D	1-5/8"	2.28	2.48	3.15	1.57	4.33
5056D	1-3/4"	2.36	2.68	4.13	2.17	5.31

6 #5 Spline Drive Budd Wheel Socket - 1-1/2" Limited Hex SAE



Special 1-1/2" hex deep heavy duty impact socket designed for outer cap nuts on budd-style truck wheels. The 1-1/2" hex depth is limited to help prevent socket contact with the wheel. The socket is deep style to eliminate contact with the inner cap nut.

Item Number	Hex Size	Dimensions (Inches)				
		A	B	C	D	E
5048DB	1-1/2"	2.36	2.36	2.83	.55	4.02