



*Impact Sockets,
Chisels & Attachments*

EVERYTHING IMPACT.®





GP is **EVERYTHING IMPACT[®]**

Grey Pneumatic (GP) through our distributors supplies the world's automotive, industrial, assembly, mining, maintenance, construction, and energy industries with heavy duty, high quality impact and specialty sockets. We carry a complete line of Impact Socket sets and individuals from 1/4" drive thru 2-1/2" and #5 spline drive with hex sizes up to 8". We also offer a large selection of star impact drivers, impact hex drivers, triple square drivers, torque limiting extensions plus Impact chisels and accessories.

GP sockets and tools are made in Taiwan using the highest quality chrome-molybdenum alloy steel and state-of-the-art manufacturing processes and equipment. Thorough and exact heat treatment, as well as rigid quality control, ensures the correct balance of strength and durability to deliver outstanding performance at the most competitive cost.

GP Tools are available through Automotive and Industrial warehouse distributors, tool stores, mobile tool truck dealers, tire equipment and supply warehouses and other sources that service these markets.

GP offers **Fast and Reliable** service to all of our distributors and their customers.



*GP Tools carry a
Lifetime Warranty.*

All GP Impact Sockets feature the GP "High Torque" Drive

Benefits are:

Increased Strength - Transfers the pressure from the thinnest part of the socket wall toward the thicker section, resulting in increased strength.

Increased Torque - Allows up to 20% more torque to be applied than on standard hex impact sockets.

Easier Access to Tight Areas - The shift in pressure allows us to reduce the socket wall thickness, increasing access to tight areas.

Reduced Wear - Our impact sockets grip the fastener across a broader contact area, reducing the chance of rounding off fasteners.



*GP "High Torque"
drive offers many
benefits.*



*All GP Sockets feature
extra-large size markings
for quick identification.*

EVERYTHING IMPACT[®]

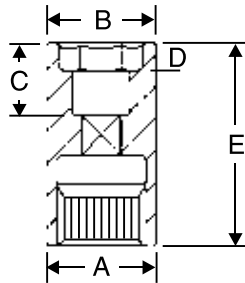


#5 Spline Drive Impact Sockets



6 #5 Spline Drive Combination Budd Wheel Sockets SAE MM

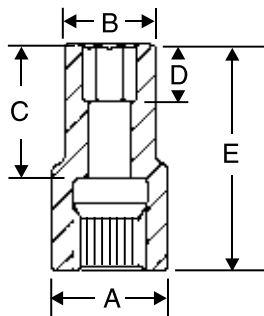
Removes and installs budd-type wheel fasteners. Sockets have two openings, eliminating the need for two separate sockets.



Item Number	Hex Size	Square Size	Dimensions (Inches/Millimeters)				
			A	B	C	D	E
5223C	1-1/2"	13/16"	2.28	2.28	3.07	.55	4.25
5241MC	41mm	21mm	58	58	78	14	108

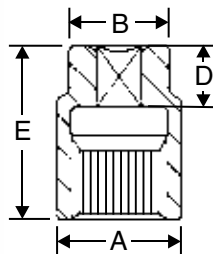
6 #5 Spline Drive Deep Thin-Wall Sockets SAE MM

Designed for truck wheel service. For lug nuts that are deeply recessed and where space is very limited.



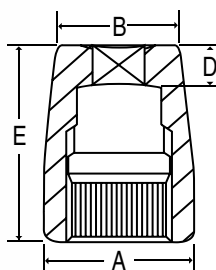
Item Number	Hex Size	Dimensions (Inches/Millimeters)				
		A	B	C	D	E
5034DT	1-1/16"	2.13	1.67	2.99	.98	4.17
5036DT	1-1/8"	2.13	1.69	2.99	.98	4.17
5040DT	1-1/4"	2.13	1.85	2.99	.98	4.17
5042DT	1-5/16"	2.13	1.93	2.99	.98	4.17
5048DT	1-1/2"	2.13	2.13	3.07	.98	4.25
5035MDT	35mm	54	51	78	25	108
5041MDT	41mm	57	57	78	25	108

4 #5 Spline Drive 4-Point (Square) Sockets SAE MM



Item Number	Square Size	Dimensions (Inches/Millimeters)			
		A	B	D	E
5313S	13/16"	2.17	1.73	.94	2.68
5315S	15/16"	2.17	1.73	.94	2.68
5317S	17mm	55	52	24	77
5321S	21mm	55	52	24	77

4 #5 Spline Drive 4-Point (Square) Heavy Duty Socket SAE



Item Number	Square Size	Dimensions (Inches)			
		A	B	D	E
5313SHD	13/16"	2.36	1.89	.67	3.07