

104-03 Finger Socket Driver 3-Pack

- Allows access into tight areas using 1/4" and 3/8" sockets.
- Diamond knurl design for positive grip.
- Includes: One No.102 3/8" male - 1/4" female. One No.103 1/4" male - 3/8" female. One No.104 3/8" male - 3/8" female.



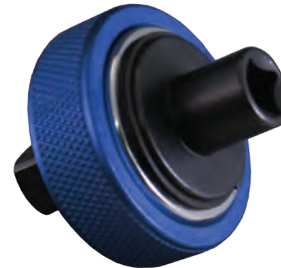
108 Mini Finger Ratchet

- New finger Style Ratchet.
- Small size great for tight areas.
- Aluminum Knurled outer ring for sure grip.
- Reversible Ratchet.
- 1/4" Drive on one side, 1/4" Hex Drive on other.
- Available in Blue or Red Anodized aluminum.



109 Finger Ratchet (3/8" Drive)

- New finger style ratchet.
- Small size great for tight areas.
- Aluminum Knurled outer ring for sure grip.
- Reversible ratchet.
- 3/8" Drive on one side, 1/4" Hex Drive on other.
- Available in Blue Anodized aluminum.



906 Finger Bit Driver

- Convenient tool allows access into the tightest of areas.
- Heavy duty mini-driver uses 1/4" square drive, 1/4" hex bits.
- Generates substantial torque, and comes in bright easy-to-access colors.
- Available in 20 (90620) & 30 (90630) piece merchandisers.



95200, 95300, 95400 In-Line Dowel Pin Puller

- New Dowel Pin Puller that extracts dowels without the use of a slide hammer.
- Fit the appropriate sized collet over the dowel, tighten the sleeve, use outer sleeve and nut to extract the dowel.
- Can be used with air ratchet, or traditional ratchet.
- Elimination of the slide hammer saves cost as well as effort and potential hand injury.
- SAE Set includes 3/16, 1/4, 5/16, 3/8, and 1/2".
- Metric Set Includes 4, 5, 6, 8, 10, and 12MM.
- Master Set includes both SAE and Metric Collets.
- Patent pending.



95200 In-Line Dowel Pin Puller SAE

95300 In-Line Dowel Pin Puller Metric

95400 In-Line Dowel Pin Puller Master Set