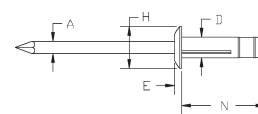
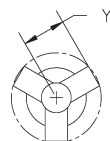
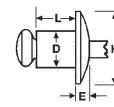




Specialty Rivets



Tri-Bulb



Painted

#110 Copper / Brass and #110 Copper / Steel (Plated Mandrel)

AFS DESCRIPTION	BULK PART No.**	GRIP RANGE		D RIVET DIA NOM INCH	DRILL NO. AND HOLE SIZE	H HEAD DIA NOM INCH	E HEAD HEIGHT MAX INCH	L RIVET LENGTH MAX		TYPICAL ULTIMATE STRENGTH (LBS.) (NEWTONS)	
		INCH	(MM)					INCH	(MM)	SHEAR	TENSILE
CB4-2B	M58600	.063-.125	1.7-3.2	1/8"(.125)	#30(.129-.133)	.250	.040	.275	7.0	215	300
CB4-4B	M58602	.188-.250	4.9-6.4	.32	3.3(3.28-3.38)	.635	1.02	.400	10.2	950	1330
CB4-2C	M56600	.063-.125	1.7-3.2	1/8"(.125)	#30(.129-.133)	.250	.040	.275	7.0	215	300
CB4-4C	M56602	.188-.250	4.9-6.4	.32	3.3(3.28-3.38)	.635	1.02	.400	10.2	950	1330

B - COPPER / BRASS; C - COPPER / STEEL (PLATED MANDREL) **ALSO AVAILABLE IN PACKAGED QUANTITIES.

TRI-BULB RIVETS

AFS DESCRIPTION	D	GRIP RANGE	DRILL NO. AND HOLE SIZE	A	E	H	N	Y	SHEAR		TENSILE	
									LBS.	NEWTONS	LBS.	NEWTONS
A0516ATB	5/32"(.156)	.039-.118	#20(.160-.164)	.091	.055	.315	.630	.236	134	600	224	1000
A0523ATB		.039-.276		.091	.055	.315	.835	.335	134	600	224	1000
A0619ATB	3/16"(.187)	.039-.157	#11(.192-.196)	.115	.071	.386	.720	.276	202	900	269	1200
A0622ATB		.039-.248		.115	.071	.386	.807	.335	202	900	269	1200
A0625ATB		.039-.354		.115	.071	.386	.925	.374	202	900	269	1200
A0630ATB		.157-.472		.115	.071	.386	1.063	.433	202	900	269	1200
AL0625ATB		.039-.354		.115	.079	.551	.925	.374	202	900	269	1200

FOR BLACK RIVETS ADD BL TO THE PART NUMBER. WHITE AVAILABLE AS SPECIAL ORDER ITEM. REFER TO PRICE LIST FOR BULK PART NUMBER.

PAINTED RIVETS*

W=White BR=Brown BL=Black

AFS DESCRIPTION	BULK PART No.**	RIVET COLOR	GRIP RANGE		D RIVET DIA NOM INCH	DRILL NO. AND HOLE SIZE	H HEAD DIA NOM INCH	E HEAD HEIGHT MAX INCH	L RIVET LENGTH MAX		TYPICAL ULTIMATE STRENGTH (LBS.) (NEWTONS)	
			INCH	(MM)					INCH	(MM)	SHEAR	TENSILE
AB4-2AW	M53032	W	.062-.125	1.7-3.2	.125	#30(.129-.133)	.250	.040	.275	7.0	155	240
AB4-3AW	M53007	W	.126-.187	3.2-4.8	.32	3.28-3.38	.635	1.02	.337	8.6	689	1067
AB4-4AW	M53009	W	.188-.250	4.9-6.4					.400	10.2		
AB4-2ABR	M53097	BR	.062-.125	1.7-3.2	.125	#30(.129-.133)	.275	.040	.275	7.0	155	240
AB4-3ABR	M53081	BR	.126-.187	3.2-4.8	.32	3.28-3.38	.337	1.02	.337	8.6	689	1067
AB4-4ABR	M53099	BR	.188-.250	4.9-6.4					.400	10.2		
AB4-2ABL	M53098	BL	.062-.125	1.7-3.2	.125	#30(.129-.133)	.275	.040	.275	7.0	155	240
AB4-3ABL	M53102	BL	.126-.187	3.2-4.8	.32	3.28-3.38	.337	1.02	.337	8.6	689	1067
AB4-4ABL	M53100	BL	.188-.250	4.9-6.4					.400	10.2		
SB4-2W	M53033	W	.062-.125	1.7-3.2	.125	#30(.129-.133)	.275	.040	.275	7.0	305	410
SB4-3W	M53034	W	.126-.187	3.2-4.8	.32	3.28-3.38	.337	1.02	.337	8.6	1356	1823
SB4-4W	M53036	W	.188-.250	4.9-6.4					.400	10.2		
SB4-2BR	M53003	BR	.062-.125	1.7-3.2	.125	#30(.129-.133)	.275	.040	.275	7.0	305	410
SB4-3BR	M53011	BR	.126-.187	3.2-4.8	.32	3.28-3.38	.337	1.02	.337	8.6	1356	1823
SB4-4BR	M53012	BR	.188-.250	4.9-6.4					.400	10.2		
SB4-2BL	M53060	BL	.062-.125	1.7-3.2	.125	#30(.129-.133)	.275	.040	.275	7.0	330	515
SB4-4BL	M53051	BL	.188-.250	3.2-4.8	.32	3.28-3.38		1.02	.400	10.2	1467	2290

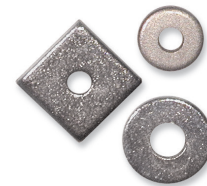
*CUSTOM COLORS AVAILABLE; CONTACT FACTORY FOR ADDITIONAL INFORMATION. PAINTED RIVETS WORK BEST WHEN HOLE SIZE IS AT THE HIGH END OF TOLERANCE TO ALLOW FOR PAINT.

**ALSO AVAILABLE IN PACKAGED QUANTITIES.

BACK-UP WASHERS

AFS DESCRIPTION	STANDARD CARTON QTY.	BULK PART No.**	500 PACK No.	MATERIAL	FOR HOLE SIZE	SIZE/SHAPE
SS-3	5M	M50653	M40653	STEEL	3/32"	1/2" SQ
SS-4	5M	M50654	M40654	STEEL	1/8"	1/2" SQ
SS-6	5M	M50656	M40656	STEEL	3/16"	1/2" SQ
SS-8	10M	M50658	M40658	STEEL	1/8"	3/8" RD
SS-9	10M	M50655	M40655	STEEL	5/32"	7/16" RD
SS-10	10M	M50661	M40661	STEEL	3/16"	1/2" RD
SS-12	10M	M50662	M40662	STEEL	1/4"	1/2" RD
AS-8	10M	M50657	M40657	ALUMINUM	1/8"	3/8" RD
AS-9	10M	M50659	M40659	ALUMINUM	5/32"	7/16" RD
AS-10	10M	M50660	M40660	ALUMINUM	3/16"	1/2" RD
AS-12	10M	M50665	M40665	ALUMINUM	1/4"	1/2" RD

Back-up washers are .056"-.062" thick. They are used when fastening soft materials or to compensate for oversized holes.



Double-Ended Drill Bit / M39100

This double-ended drill bit provides the correct size hole and angle for 1/8" diameter countersink rivets, drilling and countersinking in one operation.

