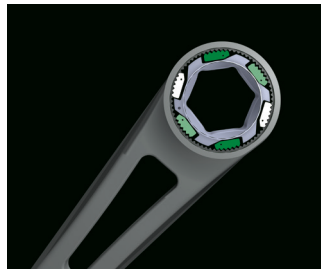


A 1.7° ARC SWING FOR PRECISION AND POWER IN THE TIGHTEST SPACES

REVOLUTIONARY
6 PAWL
TECHNOLOGY



Dual-opposing pawls provide more strength

216 positions - Delivers a 1.7° Arc Swing

Works in pairs, so one pair is always engaged

Far superior to all other ratcheting wrenches

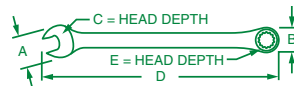


I-Beam handle distributes added force evenly for superior strength

SureGrip® design drives the sides of fasteners for maximum strength and minimum rounding



X-Frame® Fractional Ratcheting Combination Wrenches



PART NO.	HEX SIZE	A	B	C	D	E
80038	3/8"	0.81	0.82	0.52	6.75	0.305
80039	7/16"	0.90	0.89	0.60	7.18	0.328
80040	1/2"	1.00	1.00	0.68	7.96	0.367
80041	9/16"	1.19	1.15	0.94	8.48	0.389
80042	5/8"	1.30	1.22	0.84	9.47	0.419
80043	11/16"	1.41	1.33	1.00	10.07	0.439
80044	3/4"	1.59	1.41	1.00	11.09	0.460

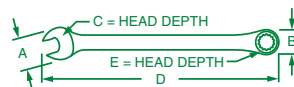
No. 80049

7 Piece, 6 Point X-Frame® Fractional Combination Wrench Set Includes:

PART NO.	SIZE	PART NO.	SIZE	PART NO.	SIZE	PART NO.	SIZE
80038	3/8"	80040	1/2"	80042	5/8"	80044	3/4"
80039	7/16"	80041	9/16"	80043	11/16"		

Packaged on a rack.

X-Frame® Metric Ratcheting Combination Wrenches



PART NO.	HEX SIZE	A	B	C	D	E
80001	8mm	0.81	0.81	0.48	6.75	0.305
80002	9mm	0.81	0.81	0.50	6.75	0.305
80003	10mm	0.81	0.81	0.54	6.752	0.305
80004	11mm	0.90	0.89	0.59	7.18	0.328
80005	12mm	1.00	1.00	0.65	7.60	0.367
80006	13mm	1.00	1.00	0.67	7.96	0.367
80007	14mm	1.19	1.15	0.75	8.48	0.389
80008	15mm	1.19	1.15	0.78	9.01	0.389
80009	16mm	1.30	1.22	0.96	9.47	0.419
80011	17mm	1.41	1.33	0.90	10.07	0.439
80012	18mm	1.41	1.33	0.93	10.61	0.439
80013	19mm	1.59	1.41	0.99	11.09	0.460

No. 80019

12 Piece, 6 Point X-Frame® Metric Combination Wrench Set Includes:

PART NO.	SIZE	PART NO.	SIZE	PART NO.	SIZE	PART NO.	SIZE
80001	8mm	80004	11mm	80007	14mm	80011	17mm
80002	9mm	80005	12mm	80008	15mm	80012	18mm
80003	10mm	80006	13mm	80009	16mm	80013	19mm

Packaged on a rack.

WRENCHES

