

Semi-Deep and Deep Sockets

SureGrip® Drive Design

Did you know sharp-cornered hex tools can round rusted or damaged fasteners? Our SureGrip® Drive Design offers better performance and increased strength, because it drives the side of the fasteners, not the corners.

**SUPERKROME
TESTED TOUGH**



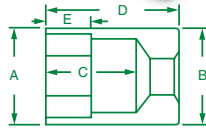
No. 41880

10 Piece, 1/4" Drive, 6 Point Semi-Deep Fractional Socket Set Includes:

PART NO.	SIZE	PART NO.	SIZE	PART NO.	SIZE	PART NO.	SIZE
41866	3/16"	41869	9/32"	41872	3/8"	41878	9/16"
41867	7/32"	41870	5/16"	41874	7/16"		
41868	1/4"	41871	11/32"	41876	1/2"		

Packaged on a rail.

1/4" Drive, 6 Point Semi-Deep Fractional Sockets



PART NO.	SIZE	A	B	C	D	E
41866	3/16"	0.31	0.47	0.79	1.25	0.25
41867	7/32"	0.34	0.47	0.89	1.25	0.28
41868	1/4"	0.38	0.47	0.89	1.25	0.32
41869	9/32"	0.42	0.47	0.83	1.25	0.31
41870	5/16"	0.47	0.47	0.76	1.25	0.34
41871	11/32"	0.50	0.50	0.74	1.25	0.34
41872	3/8"	0.53	0.53	0.74	1.25	0.34
41874	7/16"	0.64	0.64	0.74	1.25	0.34
41876	1/2"	0.67	0.67	0.72	1.25	0.34
41878	9/16"	0.75	0.75	0.74	1.25	0.43



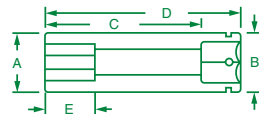
No. 4911

10 Piece, 1/4" Drive, 6 Point Deep Fractional Socket Set Includes:

PART NO.	SIZE	PART NO.	SIZE	PART NO.	SIZE	PART NO.	SIZE
41906	3/16"	41909	9/32"	41912	3/8"	41918	9/16"
41907	7/32"	41910	5/16"	41914	7/16"		
41908	1/4"	41911	11/32"	41916	1/2"		

Packaged on a rail.

1/4" Drive, 6 and 12 Point Deep Fractional Sockets



6 POINT PART NO.	12 POINT PART NO.	HEX SIZE	A	B	C	D	E
41904	—	1/8"	0.24	0.47	1.54	2.00	0.11
41905	—	5/32"	0.28	0.47	1.54	2.00	0.13
41906	44906	3/16"	0.31	0.47	1.51	2.00	0.10
41907	44907	7/32"	0.34	0.47	1.57	2.00	0.11
41908	44908	1/4"	0.39	0.47	1.50	2.00	0.25
41909	44909	9/32"	0.43	0.47	1.50	2.00	0.28
41910	44910	5/16"	0.47	0.47	1.50	2.00	0.31
41911	44911	11/32"	0.50	0.50	1.57	2.00	0.31
41912	44912	3/8"	0.53	0.53	1.40	2.00	0.31
41914	44914	7/16"	0.64	0.63	1.47	2.00	0.31
41916	44916	1/2"	0.67	0.67	1.47	2.00	0.31
41918	44918	9/16"	0.78	0.78	1.70	2.00	0.27

No. 4950

10 Piece, 1/4" Drive, 12 Point Deep Fractional Socket Set Includes:

PART NO.	SIZE	PART NO.	SIZE	PART NO.	SIZE	PART NO.	SIZE
44906	3/16"	44909	9/32"	44912	3/8"	41918	9/16"
44907	7/32"	44910	5/16"	41914	7/16"		
44908	1/4"	44911	11/32"	41916	1/2"		

Packaged on a rail.



SOCKETS, RATCHETS, AND BITS



S•K's Most Complete 1/4" Drive Set

No. 91860

60 Piece, 1/4" Drive, 6 Point, Standard and Deep, Fractional and Metric Socket SuperSet® Includes:

STANDARD SOCKETS	SIZE	DEEP SOCKETS	SIZE	STANDARD SOCKETS	SIZE	DEEP SOCKETS	SIZE
40904	1/8"	41904	1/8"	40701	4mm	41697	4mm
40905	5/32"	41905	5/32"	40700	4.5mm	41698	4.5mm
40906	3/16"	41906	3/16"	40702	5mm	41699	5mm
40907	7/32"	41907	7/32"	40703	5.5mm	41700	5.5mm
40908	1/4"	41908	1/4"	40704	6mm	41701	6mm
40909	9/32"	41909	9/32"	40706	7mm	41703	7mm
40910	5/16"	41910	5/16"	40707	8mm	41704	8mm
40911	11/32"	41911	11/32"	40708	9mm	41705	9mm
40912	3/8"	41912	3/8"	40709	10mm	41706	10mm
40914	7/16"	41914	7/16"	40710	11mm	41707	11mm
40916	1/2"	41916	1/2"	40711	12mm	41708	12mm
40918	9/16"	41918	9/16"	40712	13mm	41709	13mm
40920	5/8"			40713	14mm	41710	14mm
				40714	15mm	41711	15mm
				40715	16mm		
40970 1/4" Drive Ratchet, 4.5"				40962 6" Extension			
40990 Universal Joint				385 1/4"F-3/8"M Drive Adapter			
40961 2" Extension				384 3/8"F-1/4"M Drive Adapter			

Packaged in a molded plastic case.

