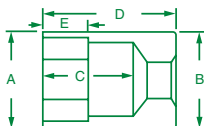


S•K Chrome Semi Deep and Deep Sockets

SOCKETS, RATCHETS, AND BITS



**SUPERKROME
TESTED TOUGH**



1/4" Drive, 6 Point, Semi-Deep Metric Sockets

PART NO.	SIZE	A	B	C	D	E
41674	5mm	0.31	0.47	0.89	1.25	0.29
41675	5.5mm	0.34	0.47	0.79	1.25	0.29
41676	6mm	0.37	0.47	0.89	1.25	0.29
41677	7mm	0.42	0.47	0.89	1.25	0.31
41678	8mm	0.47	0.47	0.89	1.25	0.34
41679	9mm	0.50	0.50	0.89	1.25	0.34
41680	10mm	0.56	0.56	0.89	1.25	0.34
41681	11mm	0.64	0.64	0.91	1.25	0.34
41686	12mm	0.66	0.66	0.78	1.25	0.36
41683	13mm	0.71	0.71	0.78	1.25	0.36
41684	14mm	0.75	0.75	0.78	1.25	0.43
41685	15mm	0.81	0.81	0.78	1.25	0.43

Tools For Every Application

S•K chrome sockets are available in a variety of sizes and styles to ensure you always have the right tool for each application. Just one example is our range of 1/4" drive semi-deep chrome sockets in fractional and metric sizes.

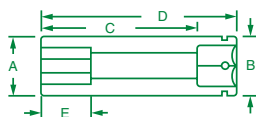


No. 41692

12 Piece, 1/4" Drive, 6 Point, Semi-Deep Metric Socket Set Includes:

PART NO.	SIZE	PART NO.	SIZE	PART NO.	SIZE	PART NO.	SIZE
41674	5mm	41677	7mm	41680	10mm	41683	13mm
41675	5.5mm	41678	8mm	41681	11mm	41684	14mm
41676	6mm	41679	9mm	41686	12mm	41685	15mm

Packaged on a rail.



1/4" Drive, 6 and 12 Point, Deep Metric Sockets

6 POINT PART NO.	12 POINT PART NO.	HEX SIZE	A	B	C	D	E
41697	—	4mm	0.28	0.47	1.51	2.00	0.10
41698	—	4.5mm	0.29	0.47	1.54	2.00	0.12
41699	44702	5mm	0.31	0.47	1.51	2.00	0.11
41700	44703	5.5mm	0.34	0.47	1.51	2.00	0.11
41701	44704	6mm	0.37	0.47	1.64	2.00	0.12
41702	—	6.3mm	—	0.47	1.64	2.00	—
41703	44706	7mm	0.42	0.47	1.54	2.00	0.14
41704	44707	8mm	0.47	0.47	1.64	2.00	0.14
41705	44708	9mm	0.50	0.50	1.64	2.00	0.16
41706	44709	10mm	0.56	0.56	1.42	2.00	0.31
41707	44710	11mm	0.62	0.62	1.43	2.00	0.31
41708	44711	12mm	0.66	0.66	1.43	2.00	0.31
41709	44712	13mm	0.71	0.71	1.43	2.00	0.31
41710	44713	14mm	0.75	0.75	1.70	2.00	0.33
41711	—	15mm	0.81	0.81	1.70	2.00	0.36



No. 1350

11 Piece, 1/4" Drive, 12 Point, Deep Metric Socket Set Includes:

PART NO.	SIZE	PART NO.	SIZE	PART NO.	SIZE	PART NO.	SIZE
44702	5mm	44706	7mm	44709	10mm	44712	13mm
44703	5.5mm	44707	8mm	44710	11mm	44713	14mm
44704	6mm	44708	9mm	44711	12mm		

Packaged on a rail.



No. 1312

13 Piece, 1/4" Drive, 6 Point, Deep Metric Socket Set Includes:

PART NO.	SIZE	PART NO.	SIZE	PART NO.	SIZE	PART NO.	SIZE
41697	4mm	41703	7mm	41707	11mm	41711	15mm
41699	5mm	41704	8mm	41708	12mm		
41700	5.5mm	41705	9mm	41709	13mm		
41701	6mm	41706	10mm	41710	14mm		

Packaged on a rail.



No. 89009

21 Piece, 1/4" Drive, 6 Point, Standard and Deep Metric Socket Set Includes:

STANDARD SOCKETS	SIZE	STANDARD SOCKETS	SIZE	DEEP SOCKETS	SIZE	DEEP SOCKETS	SIZE
40701	4mm	40708	9mm	41701	6mm	41707	11mm
40702	5mm	40709	10mm	41703	7mm	41708	12mm
40704	6mm	40710	11mm	41704	8mm		
40706	7mm	40711	12mm	41705	9mm		
40707	8mm			41706	10mm		
40970	1/4" Drive Ratchet, 4.5"		40961		2" Extension		
40953	Spinner Handle		40962		6" Extension		
40990	Universal Joint						

Packaged in a molded plastic case.



No. 1314

14 Piece, 1/4" Drive, 6 Point, Standard Metric Socket Set Includes:

PART NO.	SIZE	PART NO.	SIZE	PART NO.	SIZE	PART NO.	SIZE
40701	4mm	40706	7mm	40709	10mm	40712	13mm
40702	5mm	40707	8mm	40710	11mm		
40704	6mm	40708	9mm	40711	12mm		
40970	1/4" Drive Ratchet, 4.5"		40961		2" Extension		
40953	Spinner Handle		40962		6" Extension		

Packaged in a molded plastic case.



No. 91848

48 Piece, 1/4" Drive, 6 Point, Standard and Deep, Fractional and Metric Socket Set with Universal Joint Includes:

STANDARD SOCKETS	SIZE	DEEP SOCKETS	SIZE	STANDARD SOCKETS	SIZE	DEEP SOCKETS	SIZE
40906	3/16"	41908	1/4"	40701	4mm	41701	6mm
40907	7/32"	41909	9/32"	40702	5mm	41703	7mm
40908	1/4"	41910	5/16"	40703	5.5mm	41704	8mm
40909	9/32"	41911	11/32"	40704	6mm	41705	9mm
40910	5/16"	41912	3/8"	40706	7mm	41706	10mm
40911	11/32"	41914	7/16"	40707	8mm	41707	11mm
40912	3/8"	41916	1/2"	40708	9mm	41708	12mm
40914	7/16"	41918	9/16"	40709	10mm	41709	13mm
40916	1/2"			40710	11mm	41710	14mm
40918	9/16"			40711	12mm	41711	15mm
				40712	13mm		
				40713	14mm		
				40714	15mm		
40970	1/4" Drive Ratchet, 4.5"		385		1/4" F-3/8" M Adapter		
49270	Thumbwheel Ratchet		384		3/8" F-1/4" M Adapter		
40961	2" Extension		40990				1/4" Drive Universal Joint
40962	6" Extension						

Packaged in a molded plastic case.

No. 91844-12

41 Piece, 1/4" Drive, 12 Point, Standard and Deep, Fractional and Metric Socket Set Includes:

**SUPERKROME
TESTED TOUGH**

STANDARD SOCKETS	SIZE	DEEP SOCKETS	SIZE	STANDARD SOCKETS	SIZE	DEEP SOCKETS	SIZE
43906	3/16"	44908	1/4"	43702	5mm	44704	6mm
43907	7/32"	44909	9/32"	43703	5.5mm	44706	7mm
43908	1/4"	44910	5/16"	43704	6mm	44707	8mm
43909	9/32"	44911	11/32"	43706	7mm	44708	9mm
43910	5/16"	44912	3/8"	43707	8mm	44709	10mm
43911	11/32"	44914	7/16"	43708	9mm	44710	11mm
43912	3/8"	44916	1/2"	43709	10mm	44711	12mm
43914	7/16"	44918	9/16"	43710	11mm	44712	13mm
43916	1/2"			43711	12mm	44713	14mm
43918	9/16"			43712	13mm		
				43713	14mm		
40970 1/4" Drive Ratchet, 4.5"				40961 2" Extension			
				40962 6" Extension			

Packaged in a molded plastic case.



SOCKETS, RATCHETS, AND BITS

No. 91844

44 Piece, 1/4" Drive, 6 Point, Standard and Deep, Fractional and Metric Socket Set Includes:

STANDARD SOCKETS	SIZE	DEEP SOCKETS	SIZE	STANDARD SOCKETS	SIZE	DEEP SOCKETS	SIZE
40906	3/16"	41908	1/4"	40701	4mm	41701	6mm
40907	7/32"	41909	9/32"	40702	5mm	41703	7mm
40908	1/4"	41910	5/16"	40703	5.5mm	41704	8mm
40909	9/32"	41911	11/32"	40704	6mm	41705	9mm
40910	5/16"	41912	3/8"	40706	7mm	41706	10mm
40911	11/32"	41914	7/16"	40707	8mm	41707	11mm
40912	3/8"	41916	1/2"	40708	9mm	41708	12mm
40914	7/16"	41918	9/16"	40709	10mm	41709	13mm
40916	1/2"			40710	11mm	41710	14mm
40918	9/16"			40711	12mm	41711	15mm
				40712	13mm		
				40713	14mm		
				40714	15mm		
40970 1/4" Drive Ratchet, 4.5"				40961 2" Extension			
				40962 6" Extension			

Packaged in a molded plastic case.



SOCKETS, RATCHETS, AND BITS



S•K's Most Complete 1/4" Drive Set

No. 91860

60 Piece, 1/4" Drive, 6 Point, Standard and Deep, Fractional and Metric Socket SuperSet® Includes:

STANDARD SOCKETS	SIZE	DEEP SOCKETS	SIZE	STANDARD SOCKETS	SIZE	DEEP SOCKETS	SIZE
40904	1/8"	41904	1/8"	40701	4mm	41697	4mm
40905	5/32"	41905	5/32"	40700	4.5mm	41698	4.5mm
40906	3/16"	41906	3/16"	40702	5mm	41699	5mm
40907	7/32"	41907	7/32"	40703	5.5mm	41700	5.5mm
40908	1/4"	41908	1/4"	40704	6mm	41701	6mm
40909	9/32"	41909	9/32"	40706	7mm	41703	7mm
40910	5/16"	41910	5/16"	40707	8mm	41704	8mm
40911	11/32"	41911	11/32"	40708	9mm	41705	9mm
40912	3/8"	41912	3/8"	40709	10mm	41706	10mm
40914	7/16"	41914	7/16"	40710	11mm	41707	11mm
40916	1/2"	41916	1/2"	40711	12mm	41708	12mm
40918	9/16"	41918	9/16"	40712	13mm	41709	13mm
40920	5/8"			40713	14mm	41710	14mm
				40714	15mm	41711	15mm
				40715	16mm		
40970 1/4" Drive Ratchet, 4.5"				40962 6" Extension			
40990 Universal Joint				385 1/4"F-3/8"M Drive Adapter			
40961 2" Extension				384 3/8"F-1/4"M Drive Adapter			

Packaged in a molded plastic case.





No. 94932

32 Piece, 1/4" Drive, 6 Point, Standard and Deep, Fractional and Metric Socket Set Includes:

STANDARD SOCKETS	SIZE	DEEP SOCKETS	SIZE	STANDARD SOCKETS	SIZE	DEEP SOCKETS	SIZE
40908	1/4"	41908	1/4"	40704	6mm	41701	6mm
40909	9/32"	41909	9/32"	40706	7mm	41703	7mm
40910	5/16"	41910	5/16"	40707	8mm	41704	8mm
40911	11/32"	41911	11/32"	40708	9mm	41705	9mm
40912	3/8"	41912	3/8"	40709	10mm	41706	10mm
40914	7/16"	41914	7/16"	40710	11mm	41707	11mm
40916	1/2"	41916	1/2"	40711	12mm	41708	12mm
40970	1/4" Drive Ratchet, 4.5"			40961	2" Extension		
40953	Spinner Handle			40962	6" Extension		

Packaged in a molded plastic case.



No. 91824

24 Piece, 1/4" Drive, 6 Point, Semi-Deep, Fractional and Metric Socket Set Includes:

PART NO.	SIZE	PART NO.	SIZE	PART NO.	SIZE	PART NO.	SIZE
41866	3/16"	41872	3/8"	41674	5mm	41680	10mm
41867	7/32"	41874	7/16"	41675	5.5mm	41681	11mm
41868	1/4"	41876	1/2"	41676	6mm	41686	12mm
41869	9/32"	41878	9/16"	41677	7mm	41683	13mm
41870	5/16"			41678	8mm	41684	14mm
41871	11/32"			41679	9mm	41685	15mm
40970	1/4" Drive Ratchet, 4.5"			40953	Spinner Handle		

Packaged in a molded plastic case.

SOCKETS, RATCHETS, AND BITS



No. 94562

62 Piece, 1/4" and 3/8" Drive, 6 Point, Standard and Deep Metric Socket Set Includes:

1/4" DRIVE STANDARD SOCKETS	SIZE	1/4" DRIVE DEEP SOCKETS	SIZE	3/8" DRIVE STANDARD SOCKETS	SIZE	3/8" DRIVE DEEP SOCKETS	SIZE
40701	4mm	41700	5.5mm	306	6mm	8408	8mm
40700	4.5mm	41701	6mm	307	7mm	8409	9mm
40702	5mm	41703	7mm	308	8mm	8410	10mm
40703	5.5mm	41704	8mm	309	9mm	8411	11mm
40704	6mm	41705	9mm	310	10mm	8412	12mm
40706	7mm	41706	10mm	311	11mm	8413	13mm
40707	8mm	41707	11mm	312	12mm	8414	14mm
40708	9mm	41708	12mm	313	13mm	8415	15mm
40709	10mm	41709	13mm	314	14mm	8416	16mm
40710	11mm	41710	14mm	315	15mm	8417	17mm
40711	12mm	41711	15mm	316	16mm	8418	18mm
40712	13mm			317	17mm	8419	19mm
40713	14mm			318S	18mm		
40714	15mm			319	19mm		
				320	20mm		
				321	21mm		
				322	22mm		

40970	1/4" Drive Ratchet, 4.5"	45170	3/8" Drive Ratchet, 7.6"
40961	1/4" Drive, 2" Extension	45190	3/8" Universal Joint
40962	1/4" Drive, 6" Extension	45160	3/8" Drive, 3" Extension
384	3/8" F-1/4" M Adapter	45161	3/8" Drive, 6" Extension

Packaged in a molded plastic case.

**SUPERKROME
TESTED TOUGH**

No. 94562

62 Piece, 1/4" and 3/8" Drive, 6 Point, Standard and Deep Metric Socket Set Includes:



1/4" STANDARD SOCKETS	SIZE	1/4" DEEP SOCKETS	SIZE	3/8" STANDARD SOCKETS	SIZE	3/8" DEEP SOCKETS	SIZE
40701	4mm	41700	5.5mm	306	6mm	8408	8mm
40700	4.5mm	41701	6mm	307	7mm	8409	9mm
40702	5mm	41703	7mm	308	8mm	8410	10mm
40703	5.5mm	41704	8mm	309	9mm	8411	11mm
40704	6mm	41705	9mm	310	10mm	8412	12mm
40706	7mm	41706	10mm	311	11mm	8413	13mm
40707	8mm	41707	11mm	312	12mm	8414	14mm
40708	9mm	41708	12mm	313	13mm	8415	15mm
40709	10mm	41709	13mm	314	14mm	8416	16mm
40710	11mm	41710	14mm	315	15mm	8417	17mm
40711	12mm	41711	15mm	316	16mm	8418	18mm
40712	13mm			317	17mm	8419	19mm
40713	14mm			318S	18mm		
40714	15mm			319	19mm		
				320	20mm		
				321	21mm		
				322	22mm		
40970	1/4" Drive Ratchet, 4.5"			45170	3/8" Drive Ratchet, 7.6"		
40961	1/4" Drive Extension, 2"			45190	3/8" Drive Universal Joint		
40962	1/4" Drive Extension, 6"			45160	3/8" Drive Extension, 3"		
384	3/8" F-1/4" M Drive Adapter			45161	3/8" Drive Extension, 6"		

Packaged in a plastic molded plastic case.

SOCKETS, RATCHETS, AND BITS

No. 94549

49 Piece, 3/8" Drive, 6 Point, Standard and Deep, Fractional and Metric Socket Set with Universal Joint Includes:



STANDARD SOCKETS	SIZE	DEEP SOCKETS	SIZE	STANDARD SOCKETS	SIZE	DEEP SOCKETS	SIZE
45108	1/4"	40412	3/8"	306	6mm	8410	10mm
45110	5/16"	40414	7/16"	307	7mm	8411	11mm
45112	3/8"	40416	1/2"	308	8mm	8412	12mm
45114	7/16"	40418	9/16"	309	9mm	8413	13mm
45116	1/2"	40420	5/8"	310	10mm	8414	14mm
45118	9/16"	40422	11/16"	311	11mm	8415	15mm
45020	5/8"	40424	3/4"	312	12mm	8416	16mm
45022	11/16"	40426	13/16"	313	13mm	8417	17mm
45024	3/4"	40428	7/8"	314	14mm	8418	18mm
45026	13/16"			315	15mm	8419	19mm
45028	7/8"			316	16mm		
				317	17mm		
				318S	18mm		
				319	19mm		
45170	7.6" Ratchet			45160	3" Extension		
45172S	Thumbwheel Ratchet			45161	6" Extension		
45190	Universal Joint						

Packaged in a molded plastic case.