

Professional Ratchets

Provides Greater Access

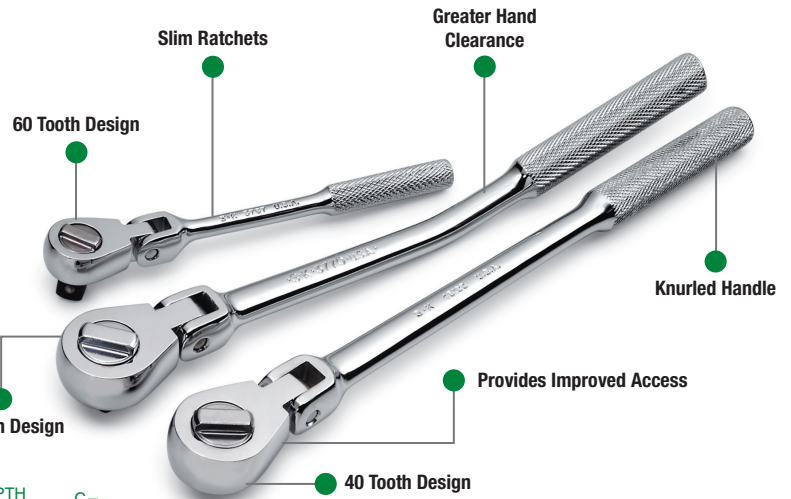
S•K's professional flex head ratchets provide greater access when working in confined spaces or when extra long reach is required.

Heavy-Duty Design

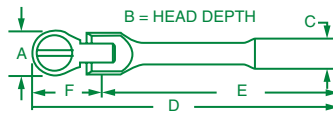
S•K's professional flex head ratchets boast a robust 36 tooth design for high strength and durability.

Slim Ratchets

S•K slim ratchets utilize a 1/4" Drive ratchet body with 3/8" Drive tang, improving access in tight compartments.



3/8" Drive Professional Flex Head Ratchets



PART NO.	SIZE/DESCRIPTION	A	B	C	D	E	F
45183	10.9" Flex Head	1.44	0.53	0.62	10.89	8.78	1.97
3770	10.8" Bent Flex Head	1.44	0.53	0.62	10.75	8.78	1.97

Rebuild and Repair Kits for 45183 & 3770

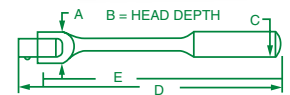
REBUILD KIT* PART NO.	REPAIR KIT** PART NO.	PIN, LOCKWASHER PART NO.	SCREW + WASHER PART NO.
45170-2	45170-9	3770-9	3770-9A

*Kit Includes: Cap, Inner Body, Clip Spring and Grease

**Kit Includes: Pawl, Stem Pin, Clip Spring and Grease



3/8" Drive Flex Head Handle



PART NO.	REPAIR KIT** PART NO.	SIZE	A	B	C	D	E
45152	45152-9A	10"	0.80	0.53	0.62	10.03	9.29
45155	45152-9A	15"	0.80	0.53	0.64	15.50	15.00

**Kit Includes: Screw, Lockwasher, and Square Drive Head

3/8" Drive Professional Slim Flex Head Ratchet

PART NO.	REBUILD KIT* PART NO.	REPAIR KIT** PART NO.	A	B	C	D	E	F
3767	45173-2	40970-9	1.00	0.48	0.42	6.30	4.81	1.49

*Kit Includes: Cap, Inner Body, Clip Spring and Grease

**Kit Includes: Pawl, Stem Pin, Clip Spring and Grease



3/8" Drive Professional Stubby Flex Head Ratchet

PART NO.	SIZE	A	B	C	D	E	F
45178	5"	1.41	0.73	0.63	5.00	3.06	1.94

Rebuild and Repair Kits for 45178

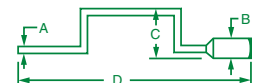
REBUILD KIT* PART NO.	REPAIR KIT** PART NO.	PIN, LOCKWASHER PART NO.	SCREW, WASHER PART NO.
45170-2	45170-9	3770-9	3770-9A

*Kit Includes: Cap, Inner Body, Clip Spring and Grease

**Kit Includes: Pawl, Stem Pin, Clip Spring and Grease



3/8" Drive Speeder Handle



PART NO.	SIZE	A	B	C	D
45181	16.8"	0.38	0.78	3.72	16.75

SOCKETS, RATCHETS, AND BITS