

Professional Ratchets

Made in the U.S.A.

You can count on the quality workmanship and value of these American made sockets.

Made in U.S.A.

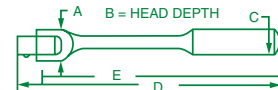
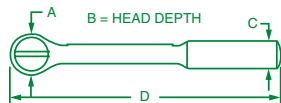


SUPERKROME® FINISH
High polish SuperKrome® plating results in a jewelry-like finish, providing long life and maximum corrosion resistance.

SUPERKROME TESTED TOUGH

Smooth Ratcheting Action

Completely enclosed ratchet mechanism with triple tooth contact for smooth ratcheting action with little back movement. Diamond knurled grip for sure handling.



3/4" Drive Professional Reversible Ratchet

PART NO.	REBUILD KIT* PART NO.	REPAIR KIT** PART NO.	SIZE	A	B	C	D
47170	47170-2	47170-9	18"	2.81	1.20	1.12	18.00

*Kit Includes: Cap, Inner Body, Clip Spring and Grease

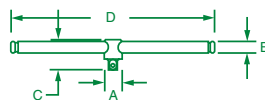
**Kit Includes: Pawl, Stem Pin, Clip Spring and Grease

3/4" Drive Flex Head Handle

PART NO.	REPAIR KIT* PART NO.	REPAIR KIT** PART NO.	SIZE	A	B	C	D	E
47155	47155-9A	47155-9	18"	1.50	0.97	1.03	18.00	17.00
47157	—	47155-9	36"	1.75	1.30	1.32	37.00	36.00

*Kit Includes: Pin, Lockwasher, and Square Drive Head

**Kit Includes: Screw, Lockwasher, and Square Drive Head

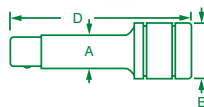
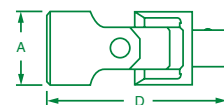


3/4" Drive Sliding T-Handle

PART NO.	SIZE	A	B	C	D
47153	18"	1.50	0.90	2.36	18.00

3/4" Drive Universal Joint

PART NO.	A	D
47190	1.50	3.69

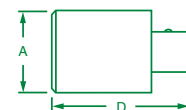


3/4" Drive Extensions

PART NO.	SIZE	A	B	D
47159	3"	1.00	1.50	3.00
47163	5"	1.00	1.50	5.00
47161	8"	1.00	1.50	8.00
47162	16"	1.00	1.50	16.00

3/4" Drive Adapters

PART NO.	DESCRIPTION	A	D
407	1/2"F-3/4"M Drive, Adapter	1.00	1.87
409	3/4"F-1/2"M Drive, Adapter	1.38	2.00



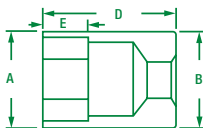
SOCKETS, RATCHETS, AND BITS

Standard Sockets

Made in the U.S.A.

You can count on the quality workmanship and value of these American made sockets.

Made in U.S.A.



3/4" Drive, 12 Point, Standard Fractional Sockets

PART NO.	HEX SIZE	A	B	D	E
47124	3/4"	1.22	1.31	2.00	0.50
47126	13/16"	1.31	1.31	2.00	0.50
47128	7/8"	1.34	1.34	2.00	0.50
47130	15/16"	1.38	1.38	2.00	0.55
47132	1"	1.44	1.44	2.06	0.55
47134	1 1/16"	1.56	1.44	2.06	0.63
47136	1 1/8"	1.63	1.44	2.13	0.66
47138	1 3/16"	1.69	1.44	2.06	0.66
47140	1 1/4"	1.81	1.56	2.19	0.75
47142	1 5/16"	1.88	1.56	2.25	0.77
47144	1 3/8"	1.88	1.56	2.25	0.78
47146	1 7/16"	2.02	1.56	2.31	0.88
47148	1 1/2"	2.09	1.55	2.44	0.86
47150	1 5/8"	2.09	1.59	2.44	0.86
47152	1 5/8"	2.16	1.59	2.50	1.00
47154	1 11/16"	2.22	1.63	2.50	1.00
47156	1 3/4"	2.31	1.66	2.66	1.09
47158	1 13/16"	2.38	1.75	2.81	1.13
47160	1 7/8"	2.47	1.75	2.88	1.13
47164	2"	2.61	1.75	3.00	1.22
47166	2 1/16"	2.75	1.97	3.25	1.34
47168	2 1/8"	2.86	1.94	3.06	1.22
47171	2 3/16"	2.86	1.94	3.06	1.38
47172	2 1/4"	3.06	2.00	3.19	1.38
47176	2 3/8"	3.06	2.00	3.25	1.38



No. 94725

25 Piece, 3/4" Drive, 12 Point, Standard Fractional Socket Set Includes:

PART NO.	SIZE	PART NO.	SIZE	PART NO.	SIZE	PART NO.	SIZE
47124	3/4"	47138	1 3/16"	47152	1 5/8"	47168	2 1/8"
47126	13/16"	47140	1 1/4"	47154	1 11/16"	47171	2 3/16"
47128	7/8"	47142	1 5/16"	47156	1 3/4"	47172	2 1/4"
47130	15/16"	47144	1 3/8"	47158	1 13/16"	47176	2 3/8"
47132	1"	47146	1 7/16"	47160	1 7/8"		
47134	1 1/16"	47148	1 1/2"	47164	2"		
47136	1 1/8"	47150	1 5/8"	47166	2 1/16"		



No. 4711B

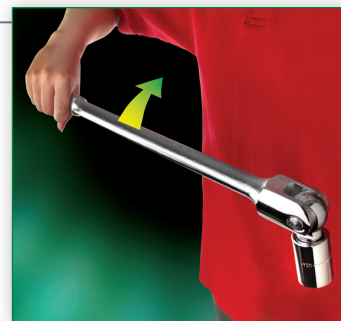
11 Piece, 3/4" Drive, 12 Point, Standard Fractional Socket Set Includes:

STANDARD PART NO.	SIZE	STANDARD PART NO.	SIZE	DEEP PART NO.	SIZE
47130	15/16"	47140	1 1/4"	47146	1 7/16"
47034	1 1/16"	47142	1 5/16"	47148	1 1/2"
47136	1 1/8"	47144	1 3/8"	47152	1 5/8"
47170	18" Ratchet			47161	8" Extension

Packaged in an impact resistant molded tool chest.

Protect Your Personal Safety

Secure your balance when working with sockets by pulling the ratchet toward you rather than pushing it. Use only recommended extensions and do not overload. To loosen very tight fasteners, select a flex handle. And of course, always wear gloves and eye protection.



Professional Ratchets

SureGrip® Drive Design

The SureGrip® Drive Design drives the side of the fastener, not the corner. This not only provides increased strength, but also avoids the rounding of rusted or damaged fasteners, which can occur when using a sharp-cornered hex tool.

Secure and Portable Tool Storage

SK 21-piece and 25-piece 3/4" Drive chrome socket sets are packaged in molded plastic cases for safe, secure storage. An integrated handle helps provide easy portability for these heavy-duty sets.



SOCKETS, RATCHETS, AND BITS



No. 4721

21 Piece, 3/4" Drive, 12 Point, Standard Fractional Socket Set Includes:

PART NO.	SIZE	PART NO.	SIZE	PART NO.	SIZE	PART NO.	SIZE	PART NO.	SIZE	PART NO.	SIZE
47128	7/8"	47132	1"	47136	1 1/8"	47142	1 5/16"	47148	1 1/2"	47152	1 5/8"
47130	15/16"	47134	1 1/16"	47140	1 1/4"	47146	1 7/16"	47150	1 9/16"	47158	1 13/16"
47170	18" Ratchet			47153	Sliding T-Handle			47161	8" Extension	47190 Universal Joint	
47155	18" Flex Handle			47159	3" Extension			47162	16" Extension		

Packaged in a molded plastic case.



No. 4725

25 Piece, 3/4" Drive, 12 Point, Standard Fractional Socket Set Includes:

PART NO.	SIZE	PART NO.	SIZE	PART NO.	SIZE	PART NO.	SIZE	PART NO.	SIZE	PART NO.	SIZE
47128	7/8"	47134	1 1/16"	47140	1 1/4"	47146	1 7/16"	47152	1 5/8"	47158	1 13/16"
47130	15/16"	47136	1 1/8"	47142	1 5/16"	47148	1 1/2"	47154	1 11/16"	47160	1 7/8"
47132	1"	47138	1 3/16"	47144	1 3/8"	47150	1 9/16"	47156	1 3/4"	47164	2"
47170	18" Ratchet			47159	3" Extension			47162	16" Extension		
47153	Sliding T-Handle			47161	8" Extension						

Packaged in a molded plastic case.