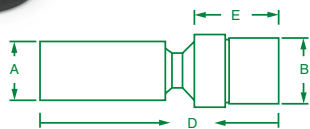


Deep Swivel Impact Sockets



3/8" Drive, 6 Point, Deep Swivel Fractional Impact Sockets

PART NO.	SIZE	A	B	D	E
33332	3/8"	0.60	0.60	3.13	0.26
33334	7/16"	0.66	0.66	3.13	0.26
33336	1/2"	0.75	0.75	3.15	0.29
33338	9/16"	0.81	0.81	3.23	0.29
33340	5/8"	0.91	0.91	3.23	0.32
33342	11/16"	1.00	1.00	3.23	0.37
33344	3/4"	1.06	1.06	3.23	0.39

3/8" Drive, 6 Point, Deep Swivel Metric Impact Sockets

PART NO.	SIZE	A	B	D	E
33380	10mm	0.66	0.60	3.13	0.26
33381	11mm	0.66	0.66	3.13	0.26
33382	12mm	0.69	0.69	3.13	0.26
33383	13mm	0.75	0.75	3.15	0.29
33384	14mm	0.81	0.81	3.23	0.29
33385	15mm	0.88	0.88	3.25	0.29
33386	16mm	0.91	0.91	3.34	0.32
33387	17mm	0.94	0.94	3.34	0.34
33388	18mm	1.00	1.00	3.36	0.37
33389	19mm	1.06	1.06	3.38	0.40

Great on Domed Fasteners

S•K Sockets feature extra recess depth to allow for use where threaded fasteners protrude above the nut or where the fastener is domed.

Great in Tight Spaces

The 30° flex angle on S•K Sockets allows the user to get at hard-to-reach fasteners. The socket can be positioned to the desired angle because of the heavy-duty spring.



No. 33329

7 Piece, 3/8" Drive, 6 Point, Deep Swivel Fractional Impact Socket Set Includes:

PART NO.	SIZE	PART NO.	SIZE	PART NO.	SIZE	PART NO.	SIZE
33332	3/8"	33336	1/2"	33340	5/8"	33344	3/4"
33334	7/16"	33338	9/16"	33342	11/16"		

Packaged on a rail.

high visibility



No. 33375

10 Piece, 3/8" Drive, 6 Point, Deep Swivel Metric Impact Socket Set Includes:

PART NO.	SIZE	PART NO.	SIZE	PART NO.	SIZE	PART NO.	SIZE
33380	10mm	33383	13mm	33386	16mm	33389	19mm
33381	11mm	33384	14mm	33387	17mm		
33382	12mm	33385	15mm	33388	18mm		

Packaged on a rail.

IMPACT SOCKETS