

1/2" Impacttools

Model	Max Torque ft-lb (Nm)	Working Torque Range ft-lb (Nm)	Free Speed rpm	Weight lb (kg)	Length in (mm)	Average Air Consumption cfm (L/min)	Air Consumption @ Load cfm (L/min)	Sound Pressure / Power dBA	Air Inlet NPTF in	Min Hose Size in (mm)
1/2" SQUARE DRIVE										
231C	600 (813)**	25 – 350 (34 – 475)	8,000	5.8 (2.63)	7.3" (185)	4.2 (119)	22 (623)	99 / 110	1/4"	3/8" (10)
236*	450 (610)	25 – 200 (34 – 271)	7,400	5.3 (2.4)	7.1" (180.3)	4.3 (122)	24 (680)	90.3 / 101.3	1/4"	3/8" (10)
244A	500 (678)	40 – 350 (54 – 475)	7,000	6 (2.72)	7.3" (185)	5.4 (153)	21 (595)	93 / 104	1/4"	3/8" (10)
244A-2*	500 (678)	40 – 350 (54 – 475)	7,000	6.3 (2.85)	9.5" (241)	5.4 (153)	21 (595)	93 / 104	1/4"	3/8" (10)
231HA*	590 (800)**	25 – 350 (34 – 475)	8,000	5.8 (2.63)	7.3" (185)	4.2 (119)	22 (623)	94 / 105	1/4"	3/8" (10)
231HA-2	590 (800)**	25 – 350 (34 – 475)	8,000	6.1 (2.76)	9.1" (236)	4.2 (119)	22 (623)	94 / 105	1/4"	3/8" (10)

*Not pictured.

**Reverse bias.

231C

Air Impactool

The classic 231C is the most popular tool in its class. Introduced over 25 years ago and continuously refined, it offers the sheer power and performance features to tackle the toughest jobs with ease — as well as proven durability and economy.

- Adjustable power regulator
- Pressure-fed lubrication
- Easy-to-service 2-piece construction



**The most popular
Impactool in the world**

244A

Air Impactool

Bring out the "big gun" for tire-changing, shock and spring work, front-end work, and other heavy automotive and truck work. The impact mechanism pumps out 500 ft-lb of torque at a free speed of 7,000 rpm to get the job done fast.

- Powerful with smooth, balanced blows
- Pressure-fed lubrication system automatically greases the impact mechanism
- Non-biased 500 ft-lb in forward and reverse



231HA-2

Extended Anvil Air Impactool

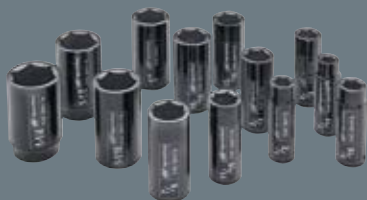
The 231HA-2 has set the standard for Impactool performance for over three decades. Refined engineering and design have perfected performance and made the 231HA-2 one of the most popular tire service Impactools ever. This elite mechanism is the perfect balance between superior power and proven durability.

- Pressure-fed lubrication system
- Handle exhaust directs air away from user
- Adjustable power regulation



**Top choice in tire
service centers**

Sockets

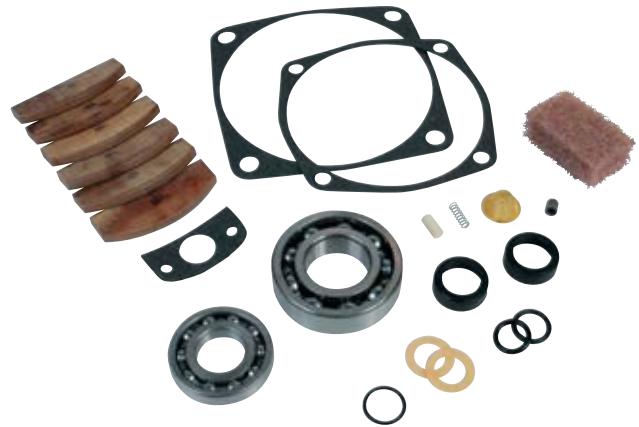


Genuine Ingersoll Rand Impact sockets are built with top-quality materials for performance and durability. For more information, turn to the sockets section — starting on page 21. See pages 14 – 16 for all other Impactool accessories.

Impactool Tune-up Kits

Extend the life of your tools with genuine Ingersoll Rand repair kits and replacement parts. Every Ingersoll Rand part is specifically designed to enhance durability and improve the productivity of your tool.

Part Number	For Use With
3/8" IMPACTOOL TUNE-UP KITS	
2015-TK	2015MAX
211-TK2	211
212-TK2	212
2115-TK2	2115TiMAX Series
1/2" IMPACTOOL TUNE-UP KITS	
2015-TK	2025MAX
2130-TK1	2130, 2130-2
2135-TK2	2135 Series, 2135TiMAX Series
236-TK1	236
231HP-TK1	231HA, 231HA-2
231-TK2	2141
231-TK3	231C
244-TK2	244A, 244A-2



Part Number	For Use With
3/4" IMPACTOOL TUNE-UP KITS	
259-TK1	259
261-TK2	261, 261-3, 261-6, 271
2141-TK1	2141
2161-TK2	2161XP, 2161XP-6
1" IMPACTOOL TUNE-UP KITS	
280-TK2	280, 280-6, 280-S6
285B-TK1	285B, 285B-6, 285B-S6
295A-TK1	295A
2190-TK1	2190Ti, 2190DTi-6, 2190Ti-6
290-TK2	290

Impactool Hammer and Anvil Kits

Part Number	For Use With
3/8" IMPACTOOL HAMMER AND ANVIL KITS	
2112-THK1	2112
2115-THK2	2115TiMAX Series
1/2" IMPACTOOL HAMMER AND ANVIL KITS	
2135-THK1	2135TiMAX, 2135QTiMAX
2135-2-THK1	2135Ti-2MAX, 2135QTi-2MAX
231B-THK1	231C, 231HA, 244A
231B-THK2	231HA-2, 244A-2
231C-THK1	231C
3/4" IMPACTOOL HAMMER AND ANVIL KITS	
261-THK1	261
2141-THK1	2141
1" IMPACTOOL HAMMER AND ANVIL KITS	
2190-THK1	2190Ti
285A-6-THK1	285B
2190-6-THK1	2190Ti-6, 2190DTi-6



If your tools aren't working, neither are you! Protect your tools with genuine Ingersoll Rand parts and services.

Air Tool Lubricants

Regular tool lubrication will keep your tool running at peak performance for a longer time. Our full line of air tool lubricants can be found on page 96.

Ergonomic Accessories

Ingersoll Rand offers a handy line of ergonomic accessories that enable you to work more safely and more comfortably. Our tool boots absorb vibrations and protect the tool from external damage. Ingersoll Rand comfort grips protect you from mechanical shocks and tool vibration, and our braces allow for more consistent torque output and eliminate the need for a dead handle.

Protective Tool Boots

Part Number	Description	For Use With
PROTECTIVE TOOL BOOTS		
212-BOOT	Impactool boot with Ingersoll Rand logo printed on red boot	212
2115M-BOOT	Premium Impactool boot with Ingersoll Rand logo	2115TiMAX Series
2130-BOOT	Premium Impactool boot with Ingersoll Rand logo	2130, 2130-2
2135M-BOOT	Premium Impactool boot with Ingersoll Rand logo	2135TiMAX, 2135Ti-2MAX, 2135QTiMAX, 2135QTi-2MAX, 2135OPTiMAX
2015-BOOT	Premium Impactool boot with Ingersoll Rand logo	2015MAX, 2025MAX
2141-BOOT	Premium Impactool boot with Ingersoll Rand logo	2141
259-BOOT	Premium Impactool boot with Ingersoll Rand logo	259
2161-BOOT	Impactool boot with Ingersoll Rand logo printed on red boot	2161XP, 2161XP-6
2190-BOOT	Premium Impactool boot with Ingersoll Rand logo	2190Ti, 2190Ti-6

- Specifically designed for use with our air Impacttools
- Keep your tools clean and protected from external damage



212-BOOT



2135M-BOOT



2015-BOOT



232TGSL-P32

Part Number	Description	For Use With
PROTECTIVE TOOL BOOTS		
236-BOOT	Impactool boot with Ingersoll Rand logo printed on red boot	236
244-BOOT	Impactool boot with Ingersoll Rand logo printed on red boot	244A, 244A-2
261-BOOT	Impactool boot with Ingersoll Rand logo printed on red boot	261, 261-3, 261-6
285-BOOT	Impactool boot with Ingersoll Rand logo printed on red boot	285B, 285B-6
295-BOOT	Impactool boot with Ingersoll Rand logo printed on red boot	295, 295-S
231-BOOT	Impactool boot with Ingersoll Rand logo printed on red boot	231C, 231HA, 231HA-2
232TGSL-P32	ThunderGun Street Legal Impactool boot	232TGSL

285B Replacement Boots

Part Number	Description	For Use With
PROTECTIVE TOOL BOOTS		
431L-62	Rubber hammer case guard	285B, 285B-6, 285B-S6
431L-32	Rubber motor housing guard	285B, 285B-6, 285B-S6



431L-62



431L-32

Light Holder Boots

Part Number	Description	For Use With
2115M-BOOT-LED	Premium boot with LED flashlight holder (kit includes LED flashlight)	2115TiMAX Series
231-BOOT-LED	Premium boot with LED flashlight holder (kit includes LED flashlight)	231
2135M-BOOT-LED	Premium boot with LED flashlight holder (kit includes LED flashlight)	2135TiMAX Series



2115M-BOOT-LED



231-BOOT-LED



2135M-BOOT-LED