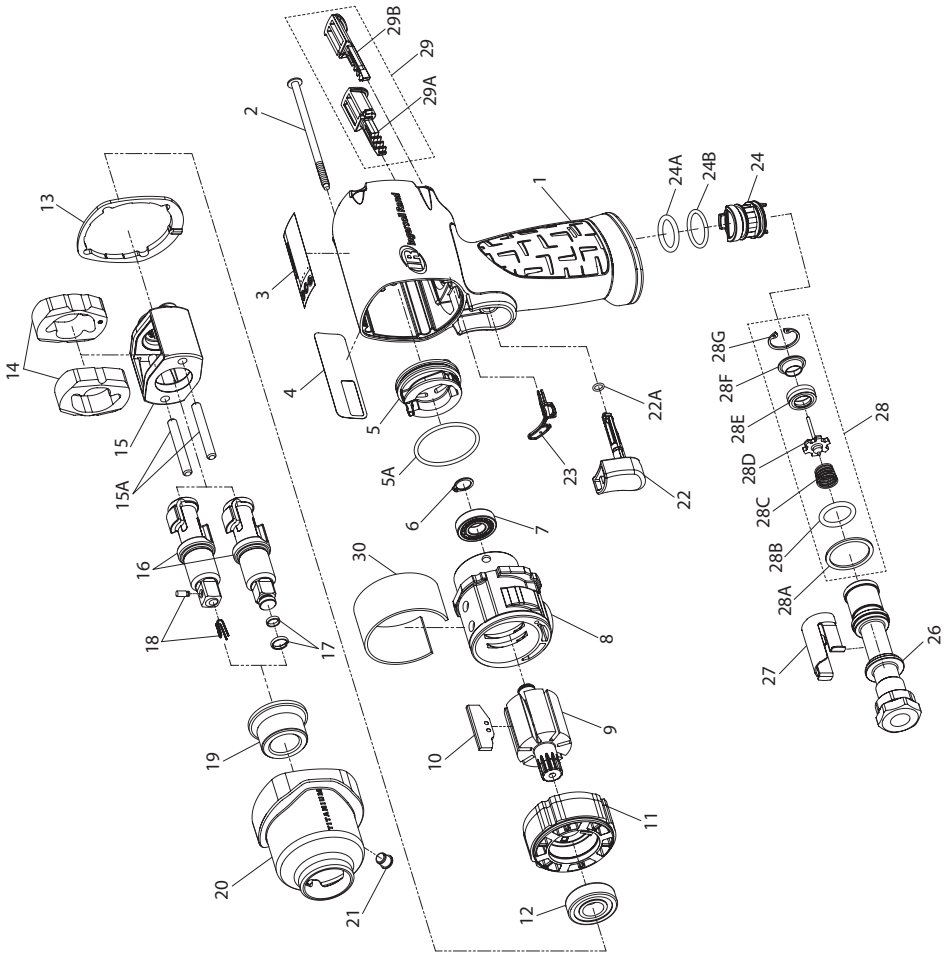


2115TiMAX and 2125TiMAX Series Air Impactool™ - Exploded View



(Dwg. 45588175)

2115TiMAX and 2125TiMAX Series Air Impactool™ - Parts List

Item	Part Description	Part Number	Item	Part Description	Part Number
* 1	Housing Assembly		19	Bushing, Hammer Case	2112-641
	for model 2115TiMAX	2115TiMAX-A40	*	Hammer Case Assembly	2115TiMAX-D727
	for model 2115QTiMAX	2115QTiMAX-A40	19	Bushing, Hammer Case	---
	for model 2125QTiMAX	2125QTiMAX-A40	20	Hammer Case	---
	for model 2115PTiMAX	2115PTiMAX-A40	21	Grease Fitting	---
	for model 2125PTiMAX	2125PTiMAX-A40	21	Grease Fitting	1305R-188
1	Housing	---	† *	Trigger Assembly	2135-D93B
3	Warning Label	---	22	Trigger	---
4	Information Label	---	22A	O-Ring, Trigger	---
23	Gasket, Motor	---	† 23	Gasket, Motor	2112-283
*	Reverse Valve Assembly	---	*	Reverse Valve Assembly	2131-A329
29	Button Kit	---	24	Reverse Valve	---
2	Screw, Hammer Case (4 required)	2115-638	24A	O-Ring, Reverse Valve (Top-Black)	---
3	Warning Label	WARNING-2-99	24B	O-Ring, Reverse Valve (Bottom-Blue)	---
4	Information Label		*	Inlet Bushing Assembly	2135-D565A
	for model 2115TiMAX	2115TiMAX-300	26	Inlet Bushing	---
	for model 2115QTiMAX	2115QTiMAX-300	27	Inlet Clip	2131-57
	for model 2125QTiMAX	2125QTiMAX-300	28	Inlet Parts Kit	2135-K303
	for model 2115PTiMAX	2115PTiMAX-300	28A	Washer	---
	for model 2125PTiMAX	2125PTiMAX-300	28B	O-Ring, Seal	---
*	Power Regulator Assembly	2115-D249A	28C	Throttle Spring	---
5	Power Regulator	---	28D	Throttle Valve	---
5A	O-Ring, Power Regulator	---	28E	Valve Seat	---
6	Retaining Ring	4E-6	28F	Seat Support	---
7	Ball Bearing (Cylinder)	R00H-97	28G	Retainer	---
8	Cylinder	2112-3	29	Button Kit	2115-K75RD
9	Rotor	2115-53	29A	Forward Button	---
† 10	Vane Pack (set of 7)	2115-42A-7	29B	Reverse Button	---
11	End Plate	2112-11	30	Silencer (for models 2115QTiMAX, 2125QTiMAX, 2115PTiMAX and 2125PTiMAX)	2115Q-311
12	Ball Bearing (End Plate)	2131-97			
† 13	Hammer Case Gasket	2115-36	*	Tune-Up Kit	2115-TK2
*	Hammer Mechanism Kit	2115-THK2	5A	O-Ring, Power Regulator	---
14	Hammer (2)	---	6	Retaining Ring	---
15	Hammer Frame	---	7	Ball Bearing (Cylinder)	---
15A	Hammer Pin (2)	---	10	Vane Pack (set of 7)	---
*	Anvil Assembly		12	Ball Bearing (End Plate)	---
	for models 2115TiMAX and 2115QTiMAX	2112-A626	13	Hammer Case Gasket	---
	for model 2125QTiMAX	2112-A726	22A	O-Ring, Trigger	---
	for model 2115PTiMAX	2112P-A626	23	Gasket, Motor	---
	for model 2125PTiMAX	2112P-A726	24A	O-Ring, Reverse Valve (Top-Black)	---
16	Anvil	---	24B	O-Ring, Reverse Valve (Bottom-Blue)	---
	Socket Retainer Kit	---	28	Inlet Parts Kit	---
† 17	Socket Retainer Kit		*	Kit, Piped-Away Exhaust	2115-K284
	for models 2115TiMAX and 2115QTiMAX (3/8" Ring-type)	2115-K425	*	Inlet Clip Removal Tool	2131-322
	for model 2125QTiMAX (1/2" Ring-type)	2125QTI-K425	† *	Air Care Kit (grease gun, grease, oil)	115-LBK1
	O-Ring	---	*	Grease (replacement tube for -LBK1)	115-4T
	Socket Retainer	---	*	Air Tool Oil (4 oz. bottle)	1024
	Socket Retainer Kit	---	*	Grease (1 lb can)	105-1LB
† 18	Socket Retainer Kit		*	Grease (8 lb can)	105-8LB
	for model 2115PTiMAX (3/8" Pin-type)	2115PTI-K425	*	Grease Gun	R000A2-228
	for model 2125PTiMAX (1/2" Pin-type)	2125PTI-K425			
	Retainer Spring	---			
	Socket Retainer Pin	---			

* Not illustrated.

† To keep downtime to a minimum, it is desirable to have certain repair parts on hand. We recommend that you stock one (pair or set) of each part indicated by a (†) for every four tools in service.

Parts and Maintenance

When the life of the tool has expired, it is recommended that the tool be disassembled, degreased and parts be separated by material so that they can be recycled.

Tool repair and maintenance should only be carried out by an authorized Service Center.

Refer all communications to the nearest **Ingersoll Rand** Office or Distributor.

Related Documentation

For additional information refer to:

Air Impact Wrench Product Safety Information Manual 04580916.

Air Impact Wrench Product Information Manual 45585155.

Manuals can be downloaded from www.ingersollrandproducts.com.



www.ingersollrandproducts.com
© 2011 **Ingersoll-Rand** Company

45585163
Edition 3
August 2011