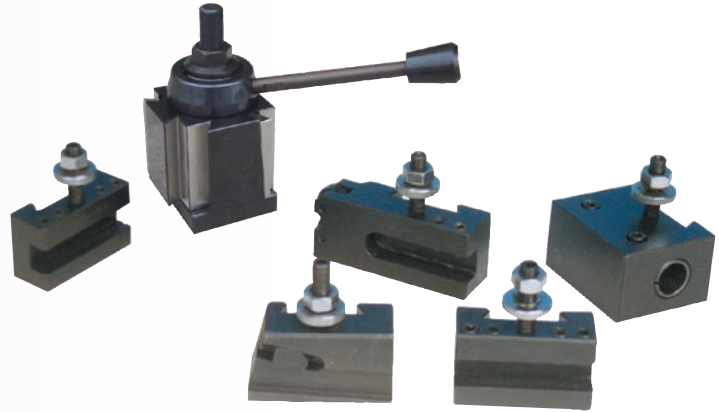


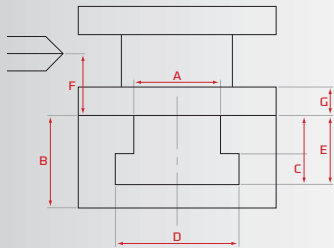
# TOOL POST SETS

## QUICK CHANGE TOOL POST SETS

- #1 Boring & Facing
- #2 Boring, Turning & Facing
- #4 Boring, Heavy-duty
- #7 Universal Parting Blade
- #10 Knurling, Facing & Turning
- Working parts hardened and ground
- Maximum rigidity for chatter-free performance
- Holders fit Aloris and YUASA tool posts
- Increases productivity of all lathe operations
- Completely sealed for maintenance free operation
- Change tools in seconds
- Base must be machined to fit your lathe. For JET Lathes see chart below for specifications



STOCK NUMBER	A	B	C	D	E	F	G
BDB1340A	1.26	1.378	0.315	2	0.63	1.417	0.787
GHB1340A	1.26	1.378	0.315	2	0.63	1.417	0.787
GH1340W	1.375	1.5	0.335	2	0.689	1.708	0.708
GH1440W	1.375	1.5	0.335	2	0.689	1.708	0.708
GH1440ZX, GH1460ZX	1.375	1.5	0.5	1.968	1.125	1.63	0.63
GH1640ZX, GH1660ZX	1.375	1.968	0.5	1.968	1.125	1.87	0.866
GH1840ZX, GH1860ZX, GH1880ZX	1.375	1.968	0.5	1.968	1.125	1.87	0.866
GH2280ZX	1.375	2.75	0.5	1.968	1.125	1.87	0.866



Dimensions for Machining your Tool Post to fit your JET Lathe. Distance for Tool post size on all JET metal lathes.

STOCK NUMBER	650295	650300	650305
Series	200 (BXA)	300 (CXA)	400 (CA)
Fits Swing Lathe Size (in.)	10 - 15	10 - 18	14 - 20
Net Weight (lbs.)	6	6	7

