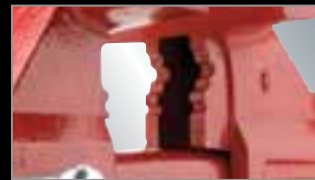
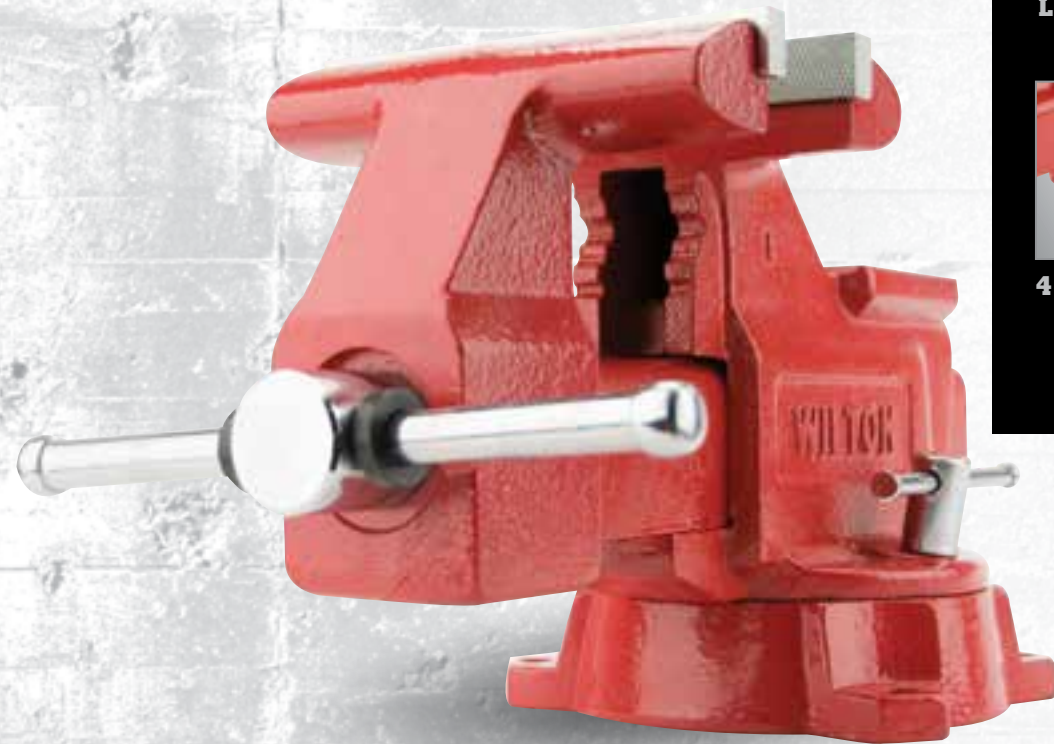


WILTON® UTILITY

IDEAL FOR ANY JOB



PIPE JAWS



LARGE ANVIL



4 MOUNTING POSTS



WILTON® SHOP

BUILT FOR YOUR WORKBENCH



PIPE JAWS



POLISHED ANVIL



4 MOUNTING POSTS



FEATURES

REPLACEABLE STEEL JAWS:

- Furnished with a serrated pattern to insure strength and long life

LARGE ANVIL:

- Designed to take a pounding while forming and shaping materials

180° LOCKING SWIVEL BASE:

- Single lockdown provides quick and easy positioning

Stock No.	Model	Jaw Width (in.)	Maximum Opening (in.)	Throat Depth (in.)	Pipe Jaw Capacity (in.)	Replacement Jaw Insert No.	Net Weight (lbs.)
UTILITY VISES – SWIVEL BASE							
11126	674	4-1/2	4	2-5/8	1/8 – 2	76654S41	19
11127	675	5-1/2	5	3-1/4	1/8 – 2-1/2	11127S41	27
11128	676	6-1/2	5-1/2	3-13/16	1/8 – 2-1/2	11128S41	38
191	656HD	6-1/4	6	4-3/8	1/8 – 3	11106S41	58
11800	648HD	8	7-1/2	4-1/2	1/8 – 3	2904130	77

IDEAL FOR

- General Purpose
- Light Tradesman
- Utility and Service
- Automotive

FEATURES

HARDENED STEEL JAWS:

- Furnished with a serrated pattern to insure strength and long life

DOUBLE LOCK DOWNS:

- 2 Lockdowns for a sturdier base and less rotation

360° LOCKING SWIVEL BASE:

- 360° swivel ability for ideal positioning on workbench

IDEAL FOR

- General Purpose
- Light Tradesman
- Utility and Service
- Automotive

Stock No.	Model	Jaw Width (in.)	Maximum Opening (in.)	Throat Depth (in.)	Pipe Jaw Capacity (in.)	Replacement Jaw Insert No.	Net Weight (lbs.)
SHOP VISES – SWIVEL BASE							
63300	WS4	4	4	2-3/4	5/8" - 2"	310041W	20
63301	WS5	5	5	3	5/8" - 2 3/8"	310051W	28
63302	WS6	6	6	3-1/2	5/8" - 2 1/2"	310061W	42
63304	WS8	8	8	4	3/4" - 3"	310081W	65