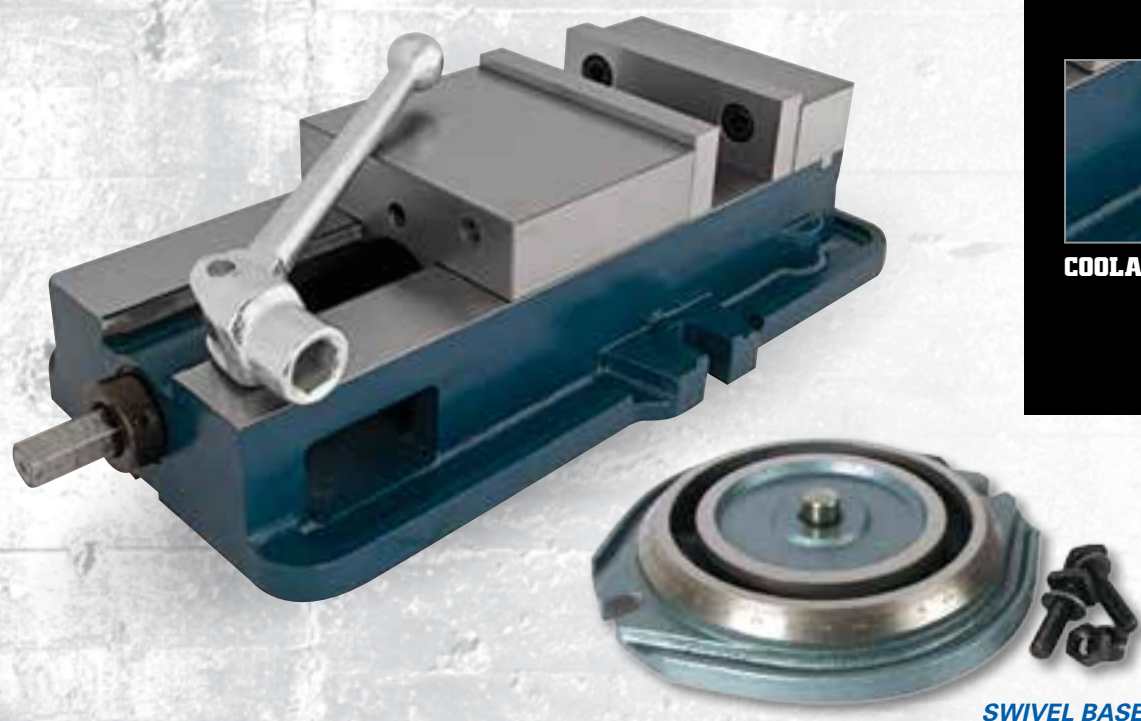


VERTI-LOCK[®] MILLING MACHINE VISE

ACCURATE, SOLID & TRUE



FLAME HARDENED BED



HARDENED JAWS



COOLANT DRAIN



SWIVEL BASE

COMMON FEATURES

WISE BODY:

- The ductile alloy vise body with flame-hardened bed provides solid work support, accuracy, and longevity

WISE JAWS:

- The fixed jaw is rated at 85,000 PSI and the annealed, surface ground sliding jaw at 70,000 PSI

SPINDLE:

- Fully enclosed spindle is protected from milling elements
- Cut from special alloy steel, hardened and ground

Stock No.	Model	Jaw Width (in.)	Jaw Depth (in.)	Jaw Opening (in.)	Net Weight (lbs.)
STANDARD VISE ONLY					
12390	1250N	5	1-7/16	4-1/2	50
63186	1275N	6	1-3/4	7-1/2	75
12375	1280N	8	2-1/4	7-1/2	164
SWIVEL BASE ONLY					
12285	5S	5	-	-	20
12290	6S	6	-	-	26
12295	8S	8	-	-	48

SUPER PRECISION MACHINE VISES

ANGULAR & SELF CENTERING PRECISION



SUPER PRECISION 3-AXIS TILTING

- Perfect vise for 3-axis jobs in milling, drilling, grinding, shaping and jig boring
- Vise bodies are constructed of close grained, high tensile, seasoned alloy castings
- Ergonomically designed all steel handle with spring loaded ball attachment
- Durable polychromatic finish
- Hardness of Jaws 55 ± 3HRC



SUPER PRECISION 2-AXIS ANGULAR

- Perfect vise for applications where the workpiece requires machining on an angle
- Vise bodies are constructed of close grained, high tensile, seasoned alloy castings
- All ground surfaces made to close tolerances
- Ergonomically designed all steel handle with spring loaded ball attachment
- Hardness of Jaws 55 ± 3HRC



SUPER PRECISION SELF CENTERING

- Very convenient for use with drilling and milling machines where quick centering is required
- Allows for accurate centering of jobs automatically
- Special design allows accurate setting up of jobs with only a single machine setting

Stock No.	Model	Jaw Width (in.)	Jaw Depth (in.)	Jaw Opening (in.)	Net Weight (lbs.)
SUPER PRECISION 3-AXIS TILTING					
11700	TLT/SP-50	2	1	2	10
11701	TLT/SP-75	3	1-5/16	3	26
11702	TLT/SP-100	4	1-1/2	4	52
11803	TLT/SP-125	5	1-3/4	5	84
11804	TLT/SP-150	6	1-3/4	6	119

Stock No.	Model	Jaw Width (in.)	Jaw Depth (in.)	Jaw Opening (in.)	Net Weight (lbs.)
SUPER PRECISION 2-AXIS TILTING					
11703	AMV/SP-50	2	15/16	2	8
11704	AMV/SP-75	3	1-5/16	3	22
11705	AMV/SP-100	4	1-9/16	4	43
11706	AMV/SP-125	5	2	5	74
11707	AMV/SP-150	6	2	6	101

Stock No.	Model	Jaw Width (in.)	Jaw Depth (in.)	Jaw Opening (in.)	Net Weight (lbs.)
SUPER PRECISION SELF CENTERING VISE					
11713	SCV/SP-100	4	1-1/2	4	34

