



17-Gallon Low-Profile Portable Oil Drain

Model JDI-LP4
Owner's Manual



Operating and Safety Precautions:

1. Read assembly and operating instructions and instructions before use
2. Personnel should always wear proper personal protection equipment and clothing.
3. Ensure that all fittings and connections are properly tightened.
4. Oil is flammable. Keep away from heat, sparks, and open flames as an explosion will result in severe personal injury including death.
5. Monitor the fluid level when filling the drain to prevent overflow or spillage.
6. Use care when rolling the oil drain when it is full of oil to prevent splashing or spillage.
7. Periodically inspect the screen for debris that may prevent the flow of oil.
8. Always connect the evacuation hose before running pump
9. Monitor the discharge hose when evacuating the drain to prevent overflow or spillage

Product Specifications:

- a. Max. Tank Capacity: 23.8 gal (90L)
- b. Functional Tank Capacity: 16.4 gal (62L)

Assembly

Tools and Supplies (not included)

Adjustable Wrench 19mm Socket 17mm Socket 13mm Socket

Assembly Procedure:

1. Assemble M12 flat washer (17), nut (18), and hex head screw (16) to wheels (15) using 19mm socket and wrench (**see Fig. 1**).
2. Assemble four M10 hex head screws (5), four M10 nuts (2), and eight M10 flat washers (3) per caster (4) using 17mm socket and wrench (**see Fig. 2**).
3. Assemble 4 piece handle assembly (8, 10, 11) with four M8 washers (7), nuts (6), and hex head screws (9), using 13mm socket and wrench (**see Fig.3**).
4. Attach handle assembly to tank with two M8 washers (7), nut (6), and hex head screw (9) using 13mm socket and wrench.
5. Thread ¾" NPT ball valve (19) on back port. (**see Fig.4**)



Fig. 1

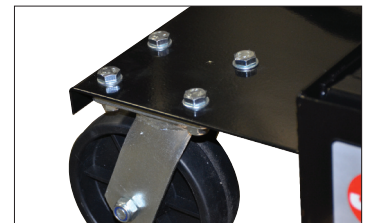


Fig. 2

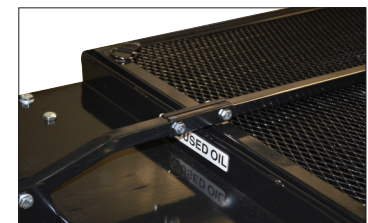
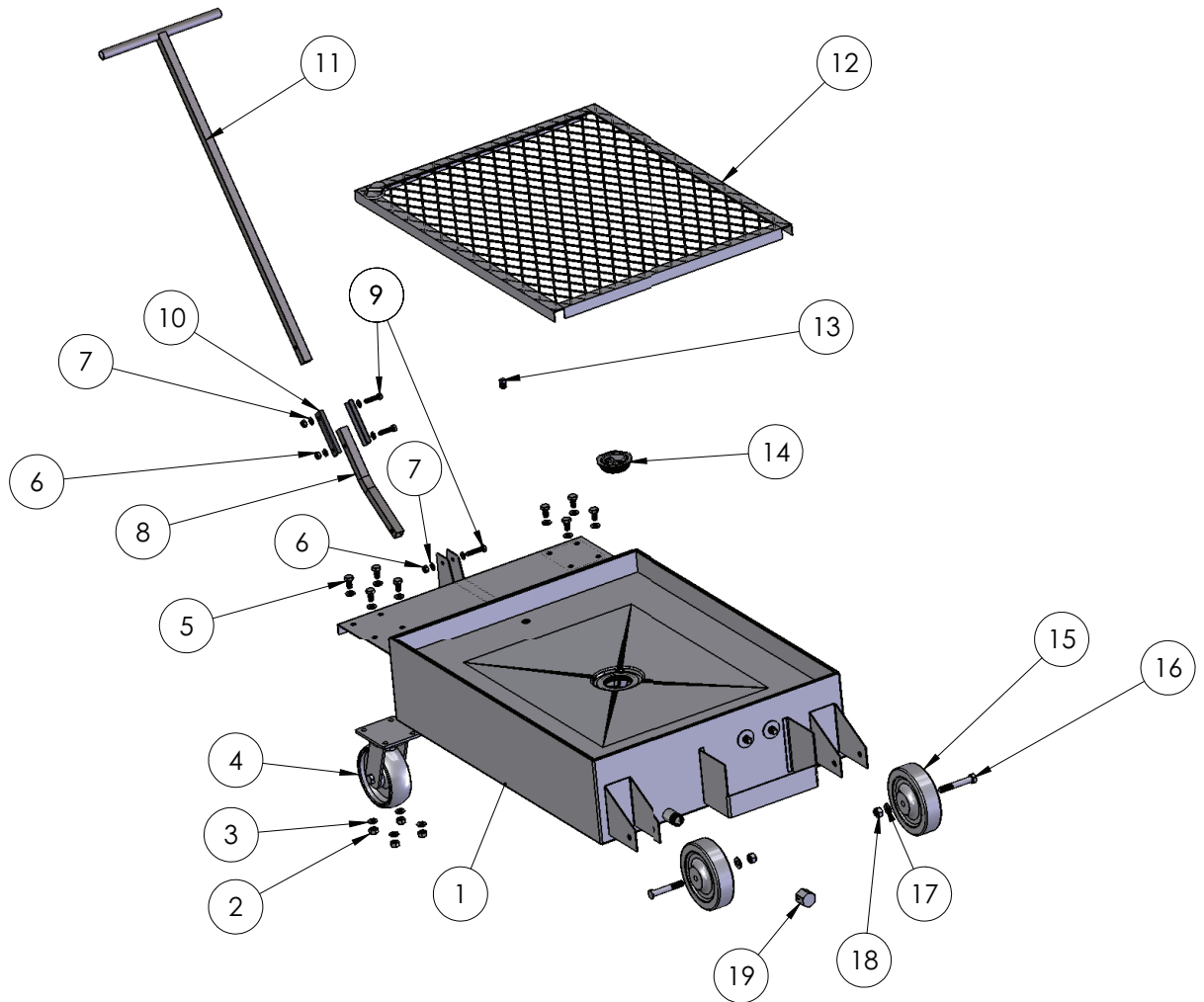


Fig. 3



Fig. 4

Product Specifications:



Contents:

Item No.	Description	Qty.
1	Tank	1
2	M10 Nylon Insert Locknut	8
3	M10 Flat Washer	16
4	6" Swivel Caster Assembly	2
5	M10 Hex Head Cap Screw	8
6	M8 Nylon -Insert Locknut	3
7	M8 Flat Washer	6
8	Handle - Lower	2
9	M8 Hex Head Cap Screw	3
10	Handle Bracket	2

Item No.	Description	Qty.
11	Handle - Upper	1
12	Screen Assembly	1
13	¼" NPT Plug	1
14	2" NPS Plug	2
15	6" Wheel	2
16	M12 Hex Head Cap Screw	2
17	M12 Flat Washer	2
18	M12 Nylon - Insert Locknut	2
19	¾" NPT 90° Ball Valve	1

Operation:

To Fill:

1. Make sure $\frac{3}{4}$ " NPT ball valve (19) is closed by turning handle clockwise horizontal.
2. Remove 2" NPS Plug (14) from drain and position screen assembly on top of tank.
3. Roll the drain unit under the vehicle to be serviced and drain the fluid into the drain.

To Empty:

1. Position the drain over the used oil storage receptacle.
2. Open the $\frac{3}{4}$ " NPT ball valve handle to vertical position.

Note: Aboveground used oil storage receptacles require the use of adapter kit 61431-2 for suction pump evacuation or JDI-EK for self-evacuation.