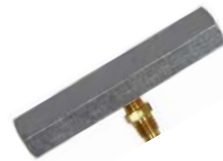


FUEL INJECTION ADAPTERS & REPLACEMENT PARTS

72315
MANIFOLD W/
SCHRADER



72316
ADAPTER
ASSEMBLY



72317
ADAPTER
ASSEMBLY



72318
ADAPTER
ASSEMBLY



72319
ADAPTER
ASSEMBLY



72320
ADAPTER
ASSEMBLY



72322
ADAPTER SET
CONSISTING OF:
60236, 72305, &
72306



72323
ADAPTER KIT



74424
M91/100 PSI
GAUGE



74425
RELEASE VALVE
TUBING



74426
M12 x 1.00
HONDA PULSE
DAMPENER
ADAPTER



74431
BANJO BOLT
M6 x 1.00 WITH
O-RING



74432
BANJO BOLT
M8 x 1.00 WITH
NYLOTRON
WASHER



74433
BANJO BOLT
M10 x 1.00
W/ NYLOTRON
WASHER



74434
BANJO BOLT
M12 x 1.25 WITH
NYLOTRON WASHER



74435
BANJO BOLT
M12 x 1.50 W/
NYLOTRON
WASHER



74437
REPAIR PARTS KIT



74438
M91/100 PSI
GAUGE HOSE AND
RELIEF VALVE



74440
M68/100 PSI
GAUGE AND
HOSE



74442
M68/60 PSI
GAUGE AND HOSE



FUEL INJECTION ADAPTERS & REPLACEMENT PARTS

74444
BOSCH CIS
UPGRADE KIT



74445
UPGRADE KIT
(EXCEPT CIS/TBI)



74446
RELIEF VALVE
AND TUBING
ASSEMBLY



74454
OTC CONVER-
SION, USE
ADAPTERS W/
OTC CANISTER



74455
TUBING KIT
3/8" TUBE
W/ INVERTED
FLARE NUTS
& HOSE CLAMPS



74459
QUICK COUPLER
SOCKET BY
MALE STANDARD
SCHRADER



74469
CONVERSION
ADAPTER FOR
OTC ADAPTERS



74471
M14 x 1.50 BANJO
BOLT (FOR CIS)



74476
6-FT. ROAD
TESTER HOSE



74484
5/16" QUICK DIS-
CONNECT HOSE
ASSEMBLY W/
QUICK COUPLER
PLUG: CHRYSLER/
FORD



74485
3/8" QUICK DIS-
CONNECT HOSE
ASSEMBLY W/
QUICK COUPLER
PLUG: GM



74486
GSI CONVERSION,
USE GSI
ADAPTERS W/
STAR CANISTER



74487
HOSE ASSEMBLY:
74484 & 74485



74488
HOSE ASSEMBLY:
74492 & 74493



74492
5/16" QUICK
DISCONNECT
HOSE ASSEMBLY
W/ STANDARD
SCHRADER
TEST PORT



74493
3/8" QUICK DIS-
CONNECT HOSE
ASSEMBLY W/
STANDARD
SCHRADER
TEST PORT



74494
GM TUBING KIT



74495
GM ADAPTER KIT



74499
1/4" QUICK DIS-
CONNECT HOSE
W/STANDARD
SCHRADER



74571
GAUGE & HOSE
ASSEMBLY



74701
GAUGE & HARD-
WARE ASSEMBLY



74851
DEADHEAD
ALUMINUM
ADAPTER



74852
SCHRADER GM
RIGHT ANGLE
ADAPTER



74853
SMALL SCHRADER
RIGHT ANGLE
ADAPTER



74854
FUEL INJECTION
UPDATE KIT



FUEL INJECTION ADAPTERS & REPLACEMENT PARTS

Part No.	Description	TU-26	TU-113	TU-443	TU-446	TU-447	TU-448	TU-457	TU-469	TU-480A	TU-485A	TU-550	74476	74489	TU-443-2	TU-443-3	TU-540-1	TU-540-2
72315	Manifold with standard Schrader	•																
72316	3/8" male stem adapter GM/TBI	•																
72317	3/8" flare adapter GM/TBI	•																
72318	M16x1.50 GMTBI adapter	•																
72319	M16x1.50 female by 3/8" quick coupler plug	•																
72320	M16x1.50 long stem quick coupler GM/TBI	•																
72321	Cut hose, 3 pieces. Consists of: 34201,35031 and 36032		•							•		•						
72322	Consists of 60236, 72305 and 72306																	
74423	Repair parts kit											•						
74424	Gauge assembly											•						
74425	Hose assembly											•						
74426	M12x1.00 Honda pulse dampener adapter											•			•	•	•	
74431	Banjo bolt M6x1.00 with o-ring		•							•	•	•					•	
74432	Banjo bolt M8x1.00 with nylotron washer		•							•	•	•						
74433	Banjo bolt M10x1.00 with nylotron washer		•							•	•	•					•	
74434	Banjo bolt M12x1.25 with nylotron washer		•							•	•	•					•	
74435	Banjo bolt M12x1.50 with nylotron washer		•							•	•	•						
74437	Repair parts kit		•	•	•	•				•	•							•
74438	100 PSI gauge, hose and relief valve		•					•	•									
74440	100 PSI gauge and hose				•	•												
74442	60 PSI gauge and hose			•														
74444	Bosch CIS kit: 71408 and 71409																	
74445	Upgrade kit (except CIS/TBI): 71308, 71313, 71314, 71318, 71319 and 71327																	
74446	Relief valve and tubing assembly																	
74454	OTC-style conversion adapter, use Lang adapters with OTC canister																	
74455	Straight tubing, nut and clamp parts kit		•	•						•		•						•
74459	Quick coupler socket by male standard Schrader																	
74469	Conversion adapter OTC																	

FUEL INJECTION ADAPTERS & REPLACEMENT PARTS

Part No.	Description	TU-26	TU-113	TU-443	TU-446	TU-447	TU-448	TU-457	TU-469	TU-480A	TU-485A	TU-550	74476	74489	TU-443-2	TU-443-3	TU-540-1	TU-540-2
74471	M14x1.50 banjo bolt (for CIS)											•			•	•		
74476	Road tester hose											•						
74484	5/16" quick disconnect hose assembly with quick coupler plug: Chrysler, Ford										•	•		•	•			
74485	3/8" quick disconnect hose assembly with quick coupler plug: GM										•	•		•	•			
74486	GSI conversion adapter, use GSI adapters with Lang gauges and canister																	
74487	Hose assembly: 74484 and 74485																	
74488	Hose assembly: 74492 and 74493																	
74492	5/16" quick disconnect hose assembly with standard Schrader test port																	
74493	3/8" quick disconnect hose assembly with standard Schrader test port																	
74494	GM tubing kit, consists of adapters: 41576 and 72305				•													•
74495	GM adapter kit, consists of adapters: 60236, 60238, 60239, 72306, 72309 and 74434				•													
74499	1/4" quick disconnect hose assembly with quick coupler plug																	
74571	Gauge and hose assembly							•										
74701	Gauge and hardware assembly										•							
74852	Standard Schrader right angle adapter with quick coupler plug											•		•				
74853	Small Schrader right angle adapter with quick coupler plug											•		•				
74854	Fuel injection update kit, consists of adapters: 74851, 74852 and 74853										•				•		•	