

# Grease couplers

## Hydraulic couplers – standard

- 6 000 psi (408 bar) maximum operating pressure.
- For all hydraulic type grease fittings.
- Small outside diameter permits easy contact with recessed fittings.
- Built-in ball check prevents leak and lubricant backup.
- Inlet 1/8 in. NPT (f).
- Bulk model 245978

## Hydraulic coupler displays

### Model 5852

- One hydraulic coupler in a resealable clamshell.
- 3-jaw design

### Model 5852-2

- Two hydraulic couplers in the same clamshell as model 5852.

### Model 5852-5

- Contains five couplers; reduces cost per unit.

### Model 5852-54 counter display

- Contains 54 couplers in a displayable box; best value.

### Model 5845 heavy-duty

- 7 500 psi (517 bar) maximum operating pressure.
- 1 1/16 in. hex
- Inlet 1/8 in. NPT (f)
- Bulk model 245976

### Model 5848 adapter

- 7 500 psi (517 bar) maximum operating pressure.
- Built-in swivel allows full 360° circle.
- Locks in any one of eight 45° positions.
- Adjustable coupler section permits contact with fittings in reverse positions.
- Angle body has 1/8 in. NPT (f) inlet permits addition of pipe extension when required.

### Model G300 standard grease coupler

For use with most hand-operated grease guns and equipment. 1/8 in. NPT 4-jaw design.

## Special access grease couplers

### Model 5883 90° grease coupler

- Provides access to difficult to reach fittings.
- Allows for easy lubrication in tight areas.

## Button-head couplers and adapters

### Model 80933

4 000 psi (276 bar) maximum operating pressure. For pull-on, push-on or hook-on service. Use with large 7/8 in. (22 mm) diameter button-head fittings. 7/16 in.-27 (f) thread.

### Model 81458

Same as model 80933 except for 5/8 in. (16 mm) diameter button-head fittings.

### Model 10460

5 000 psi (345 bar) maximum operating pressure. For adapting standard or large button-head couplers to hose with 1/8 in. NPT connections. 1/8 in. NPT (f) x 7/16 in.-27 (m) thread. Use gasket model 31138, not included.

### Model 10536

4 500 psi (310 bar) maximum operating pressure. For adapting standard or large button-head couplers to hose with 3/8 in. NPT connections. 3/8 in. NPT (f) x 7/16 in.-27 (m) thread. Use gasket model 31138, not included.



Hydraulic coupler displays

Model 5852



Model 5845



Model 5848



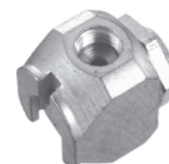
Model G300



Model 5883

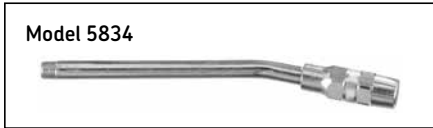


Model 81458

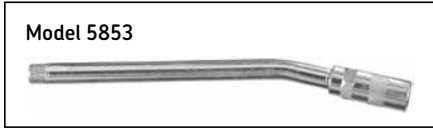


Model 10536





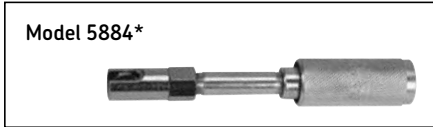
Model 5834



Model 5853



Model 62028



Model 5884\*



Model 5859\*



Model 5855\*



Model 81980\*



Model 5849\*

## Grease coupler extensions and adapters

### Model 5834

7 500 psi (517 bar) maximum operating pressure. Includes model 5845 coupler and model 62028 6 in. (152 mm) extension tube. 1/8 in. NPT (m) connection.

### Model 5853

6 000 psi (408 bar) maximum operating pressure. Includes model 5852 hydraulic coupler and model 62028 6 in. (152 mm) extension tube. 1/8 in. NPT (m) connection.

## Rigid extensions

### Model 62028

6 in. (152 mm) length. Tough, heavy-wall seamless steel tubing. 1/8 in. NPT (m) at each end.

### Model 62061

Same as model 62028 except 12 in. (305 mm) length.

### Model 62117

Same as 62028 except 18 in. (457 mm) length.

## Quick-connect grease accessories

### Model 5884\*

Contains model 5883 90° grease coupler plus a quick-connect locking sleeve for fast access to hard-to-reach lube points.

### Model 5859 angle\*

- 90° angle solves problem of contacting so-called “inaccessible” grease fittings.
- Design eliminates need to remove “deep dish” wheels for lubrication of the tie rod ends and ball joints.
- Use to service cars, truck, machines and farm equipment.

### Model 5855 recessed\*

Straight extension. Use to lubricate recessed fittings where obstructions will not permit use of hydraulic coupler. Includes extension and locking sleeve.

### Model 81980 locking sleeve\*

For adapting any 1/8 in. NPT (m) extension to a hydraulic coupler.

### Model 5849 360 degree\*

7 500 psi (517 bar) maximum operating pressure. Includes model 5848 360° coupler for full swivel, 2 in. (51 mm) steel extension tube and locking sleeve.

\* With quick-connect locking sleeve.

### WARNING!

Never point needle nozzles, adapters or coupler at any part of the body or another person.