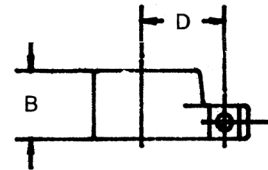
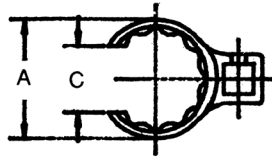


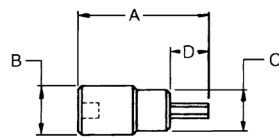


1/2" Drive Crowfoot Wrench and Hex Bit Sockets

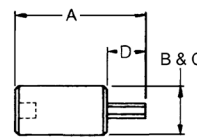


1/2" Drive Crowfoot Wrench — Flare Nut 12 Pt.

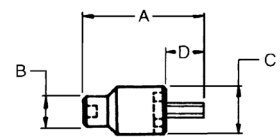
Opening	Diameter of Head	Thickness of Head	Width of Slot	Length of Centers	Weight Each (lb)	Part Number		Std. Pkg. Qty.	Opening
	A	B	C	D		Chrome	Industrial Black		
1-1/8	1-43/64	29/32	53/32	1-5/32	.19	SC36	BLKSC36	5	1-1/8
1-3/16	1-47/64	29/32	55/32	1-3/16	.19	SC38	BLKSC38	5	1-3/16
1-1/4	1-53/64	29/32	59/32	1-15/64	.19	SC40	BLKSC40	5	1-1/4
1-5/16	1-57/64	29/32	61/64	1-17/64	.19	SC42	BLKSC42	5	1-5/16
1-3/8	1-31/32	31/32	1-3/64	1-5/16	.25	SC44	BLKSC44	5	1-3/8
1-7/16	2-3/64	31/32	1-3/64	1-11/32	.25	SC46	BLKSC46	5	1-7/16
1-1/2	2-7/64	31/32	1-3/64	1-3/8	.25	SC48	BLKSC48	5	1-1/2
1-9/16	2-11/64	31/32	1-7/64	1-27/64	.31	SC50	BLKSC50	5	1-9/16
1-5/8	2-17/64	31/32	1-11/64	1-29/64	.31	SC52	BLKSC52	5	1-5/8
1-11/16	2-23/64	1-1/32	1-19/64	1-33/64	.31	SC54	BLKSC54	5	1-11/16
1-3/4	2-27/64	1-1/32	1-19/64	1-35/64	.38	SC56	BLKSC56	5	1-3/4
1-13/16	2-33/64	1-1/32	1-19/64	1-19/32	.38	SC58	BLKSC58	5	1-13/16
1-7/8	2-39/64	1-3/32	1-21/64	1-41/64	.44	SC60	BLKSC60	5	1-7/8
1-15/16	2-43/64	1-3/32	1-23/64	1-43/64	.50	SC62	BLKSC62	5	1-15/16
2	2-49/64	1-3/32	1-35/64	1-23/32	.50	SC64	BLKSC64	5	2



Type I



Type II



Type III

1/2" Drive Hex Bit Sockets

Bit Size	Type	Length	Drive End	Bit End	Bit Length	Weight Each (lb)	Part Number	Replacement Hex Bit	Std. Pkg. Qty.	Bit Size
		A	B	C	D		Chrome			
1/4	I	3-5/16	15/16	21/32	1-13/16	.18	SA8	SA8B	5	1/4
5/16	I	3-5/16	15/16	21/32	1-13/16	.18	SA10	SA10B	5	5/16
3/8	I	3-5/16	15/16	45/64	1-13/16	.25	SA12	SA12B	5	3/8
7/16	I	3-5/16	15/16	3/4	1-13/16	.25	SA14	SA14B	5	7/16
1/2	I	3-5/8	15/16	15/16	2-1/8	.35	SA16	SA16B	5	1/2
9/16	I	3-5/8	1-1/64	1-1/64	2-1/8	.45	SA18	SA18B	5	9/16
5/8	II	4	1-1/64	1-1/64	2-1/2	.50	SA20	SA20B	5	5/8
3/4	III	4	1-1/64	2-31/64	2-1/2	.65	SA24	SA24B	5	3/4