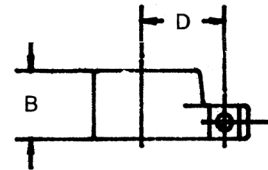
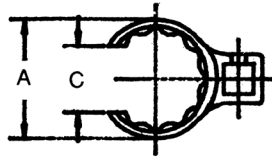


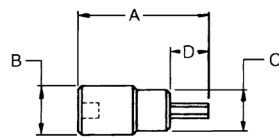


1/2" Drive Crowfoot Wrench and Hex Bit Sockets

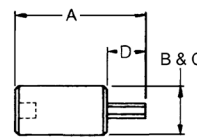


1/2" Drive Crowfoot Wrench — Flare Nut 12 Pt.

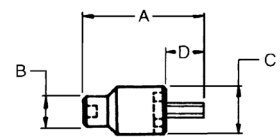
Opening	Diameter of Head	Thickness of Head	Width of Slot	Length of Centers	Weight Each (lb)	Part Number		Std. Pkg. Qty.	Opening
	A	B	C	D		Chrome	Industrial Black		
1-1/8	1-43/64	29/32	53/32	1-5/32	.19	SC36	BLKSC36	5	1-1/8
1-3/16	1-47/64	29/32	55/32	1-3/16	.19	SC38	BLKSC38	5	1-3/16
1-1/4	1-53/64	29/32	59/32	1-15/64	.19	SC40	BLKSC40	5	1-1/4
1-5/16	1-57/64	29/32	61/64	1-17/64	.19	SC42	BLKSC42	5	1-5/16
1-3/8	1-31/32	31/32	1-3/64	1-5/16	.25	SC44	BLKSC44	5	1-3/8
1-7/16	2-3/64	31/32	1-3/64	1-11/32	.25	SC46	BLKSC46	5	1-7/16
1-1/2	2-7/64	31/32	1-3/64	1-3/8	.25	SC48	BLKSC48	5	1-1/2
1-9/16	2-11/64	31/32	1-7/64	1-27/64	.31	SC50	BLKSC50	5	1-9/16
1-5/8	2-17/64	31/32	1-11/64	1-29/64	.31	SC52	BLKSC52	5	1-5/8
1-11/16	2-23/64	1-1/32	1-19/64	1-33/64	.31	SC54	BLKSC54	5	1-11/16
1-3/4	2-27/64	1-1/32	1-19/64	1-35/64	.38	SC56	BLKSC56	5	1-3/4
1-13/16	2-33/64	1-1/32	1-19/64	1-19/32	.38	SC58	BLKSC58	5	1-13/16
1-7/8	2-39/64	1-3/32	1-21/64	1-41/64	.44	SC60	BLKSC60	5	1-7/8
1-15/16	2-43/64	1-3/32	1-23/64	1-43/64	.50	SC62	BLKSC62	5	1-15/16
2	2-49/64	1-3/32	1-35/64	1-23/32	.50	SC64	BLKSC64	5	2



Type I



Type II



Type III

1/2" Drive Hex Bit Sockets

Bit Size	Type	Length	Drive End	Bit End	Bit Length	Weight Each (lb)	Part Number	Replacement Hex Bit	Std. Pkg. Qty.	Bit Size
		A	B	C	D		Chrome			
1/4	I	3-5/16	15/16	21/32	1-13/16	.18	SA8	SA8B	5	1/4
5/16	I	3-5/16	15/16	21/32	1-13/16	.18	SA10	SA10B	5	5/16
3/8	I	3-5/16	15/16	45/64	1-13/16	.25	SA12	SA12B	5	3/8
7/16	I	3-5/16	15/16	3/4	1-13/16	.25	SA14	SA14B	5	7/16
1/2	I	3-5/8	15/16	15/16	2-1/8	.35	SA16	SA16B	5	1/2
9/16	I	3-5/8	1-1/64	1-1/64	2-1/8	.45	SA18	SA18B	5	9/16
5/8	II	4	1-1/64	1-1/64	2-1/2	.50	SA20	SA20B	5	5/8
3/4	III	4	1-1/64	2-31/64	2-1/2	.65	SA24	SA24B	5	3/4



1/2" Drive Socket Sets – Chrome

S13K

1/2" DRIVE 12 POINT STANDARD SOCKET SET

7/16" 12 pt. Socket	ST1214	7/8" 12 pt. Socket	ST1228
1/2" 12 pt. Socket	ST1216	15/16" 12 pt. Socket	ST1230
9/16" 12 pt. Socket	ST1218	1" 12 pt. Socket	ST1232
5/8" 12 pt. Socket	ST1220	1-1/16" 12 pt. Socket	ST1234
11/16" 12 pt. Socket	ST1222	1-1/8" 12 pt. Socket	ST1236
3/4" 12 pt. Socket	ST1224	1-1/4" 12 pt. Socket	ST1240
13/16" 12 pt. Socket	ST1226	Twist Lock Clip Rail	213R



S15K

1/2" DRIVE 6 POINT STANDARD SOCKET SET

3/8" 6 pt. Std. Socket	ST612	7/8" 6 pt. Std. Socket	ST628
7/16" 6 pt. Std. Socket	ST614	15/16" 6 pt. Std. Socket	ST630
1/2" 6 pt. Std. Socket	ST616	1" 6 pt. Std. Socket	ST632
9/16" 6 pt. Std. Socket	ST618	1-1/16" 6 pt. Std. Socket	ST634
5/8" 6 pt. Std. Socket	ST620	1-1/8" 6 pt. Std. Socket	ST636
11/16" 6 pt. Std. Socket	ST622	1-3/16" 6 pt. Std. Socket	ST638
3/4" 6 pt. Std. Socket	ST624	1-1/4" 6 pt. Std. Socket	ST640
13/16" 6 pt. Std. Socket	ST626	Twist Lock Clip Rail	213R



SC15K

1/2" DRIVE 12 POINT CROWFOOT SOCKET SET

1-1/8" 12 pt. Crowfoot	SC36	1-5/8" 12 pt. Crowfoot	SC52
1-3/16" 12 pt. Crowfoot	SC38	1-11/16" 12 pt. Crowfoot	SC54
1-1/4" 12 pt. Crowfoot	SC40	1-3/4" 12 pt. Crowfoot	SC56
1-5/16" 12 pt. Crowfoot	SC42	1-13/16" 12 pt. Crowfoot	SC58
1-3/8" 12 pt. Crowfoot	SC44	1-7/8" 12 pt. Crowfoot	SC60
1-7/16" 12 pt. Crowfoot	SC46	1-15/16" 12 pt. Crowfoot	SC62
1-1/2" 12 pt. Crowfoot	SC48	2" 12 pt. Crowfoot	SC64
1-9/16" 12 pt. Crowfoot	SC50	Twist Lock Clip Rail	218R



S16K

1/2" DRIVE 12 POINT STANDARD SOCKET SET

7/16" 12 pt. Socket	ST1214	1" 12 pt. Socket	ST1232
1/2" 12 pt. Socket	ST1216	1-1/16" 12 pt. Socket	ST1234
9/16" 12 pt. Socket	ST1218	1-1/8" 12 pt. Socket	ST1236
5/8" 12 pt. Socket	ST1220	1-1/4" 12 pt. Socket	ST1240
11/16" 12 pt. Socket	ST1222	10" Reversible Ratchet	SF51
3/4" 12 pt. Socket	ST1224	5" Extension	S110P
13/16" 12 pt. Socket	ST1226	Universal Joint	S140
7/8" 12 pt. Socket	ST1228	Metal box	95
15/16" 12 pt. Socket	ST1230		



Crowfoot Wrenches

BD10		QTY.
4112	3/8 Crowfoot Wrench	1
4114	7/16 Crowfoot Wrench	1
4116	1/2 Crowfoot Wrench	1
4118	9/16 Crowfoot Wrench	1
4120	5/8 Crowfoot Wrench	1
4122	11/16 Crowfoot Wrench	1
4124	3/4 Crowfoot Wrench	1
4126	13/16 Crowfoot Wrench	1
4128	7/8 Crowfoot Wrench	1
4130	15/16 Crowfoot Wrench	1
4132	1 Crowfoot Wrench	1
4134	1-1/16 Crowfoot Wrench	1
4136	1-1/8 Crowfoot Wrench	1
4140	1-1/4 Crowfoot Wrench	1
4144	1-3/8 Crowfoot Wrench	1
4148	1-1/2 Crowfoot Wrench	1
BC20	5/8 Drive Crowfoot	1
BC22	11/16 Drive Crowfoot	1
BC24	3/4 Drive Crowfoot	1
BC26	13/16 Drive Crowfoot	1
BC28	7/8 Drive Crowfoot	1
BC30	15/16 Drive Crowfoot	1
BC32	1 Drive Crowfoot	1
BC34	1-1/16 Drive Crowfoot	1
SC36	1-1/8 Drive Crowfoot	1
SC38	1-3/16 Drive Crowfoot	1
SC40	1-1/4 Drive Crowfoot	1
SC42	1-5/16 Drive Crowfoot	1
SC44	1-3/8 Drive Crowfoot	1
SC46	1-7/16 Drive Crowfoot	1
SC50	1-9/16 Drive Crowfoot	1
SC52	1-5/8 Drive Crowfoot	1
SC54	1-11/16 Drive Crowfoot	1
SC56	1-3/4 Drive Crowfoot	1
SC58	1-13/16 Drive Crowfoot	1
SC60	1-7/8 Drive Crowfoot	1
SC62	1-15/16 Drive Crowfoot	1
SC64	2 Drive Crowfoot	1



Spanner Wrenches

BD11		QTY.
O471	3/4 to 2 Adjustable Pin Spanner	1
O471A	3/4 to 2 Adjustable Pin Spanner	1
O472	1-1/4 to 3 Adjustable Pin Spanner	1
O472A	1-1/4 to 3 Adjustable Pin Spanner	1
O474	2 to 4-3/4 Adjustable Pin Spanner	1
O474A	4-1/2 to 6-1/4 Adjustable Pin Spanner	1
471	3/4 to 2 Adjustable Hook Spanner	1
472	1-1/4 to 3 Adjustable Hook Spanner	1
474	2 to 4-3/4 Adjustable Hook Spanner	1
474A	4-1/2 to 6-1/4 Adjustable Hook Spanner	1
474B	6-1/8 to 8-3/4 Adjustable Hook Spanner	1
482	2 Adjustable Face Spanner	1
483	3 Adjustable Face Spanner	1
484	4 Adjustable Face Spanner	1

