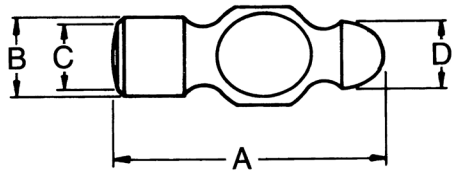


Hammers

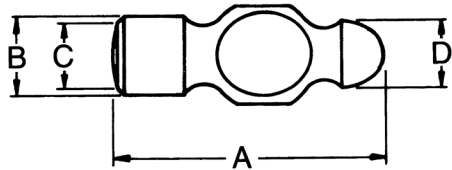
Only *Martin* Provides This Added Warranty —
If a Hammer Head Should Loosen at Any Time,
Return It for Handle Replacement or a New Hammer.

Always wear eye protection. A hammer blow should always be struck squarely.
Avoid glancing blows. Never use hammers, punches or chisels with “mushroomed” heads.



Standard Ball Peen — G Series — Wood and Fiberglass Handles

Head Weight	Overall Length	Head Length	Bell Diameter	Face	Peen	Replacement Handle		Weight With Handle (lb)	Industrial Black Head Finish		Std. Pkg. Qty.	Head Weight
		A	B	C	D	Wood	Fiberglass Kit		Wood Handle	Fiberglass Handle		
2 oz	9-1/2	2-1/16	5/8	5/8	17/32	HH49	—	.25	101G	—	6	2 oz
4 oz	9-1/2	2-1/2	3/4	3/4	5/8	HH50	—	.37	102G	—	6	4 oz
8 oz	11-5/8	3-1/8	15/16	13/16	25/32	HH53	—	.66	103G	—	6	8 oz
12 oz	13-1/4	3-3/4	1-3/32	15/16	15/16	HH59	—	1.0	104G	—	6	12 oz
1 lb	14-1/4	4	1-5/32	63/64	1	HH59	HH105106FG	1.3	105G	105FG	6	1 lb
1-1/4 lb	14-1/2	4-3/16	1-9/32	1-1/8	1-3/64	HH59	HH105106FG	1.5	106G	106FG	6	1-1/4 lb
1-1/2 lb	14-3/4	4-9/16	1-21/64	1-9/64	1-1/8	HH66	HH107FG	1.8	107G	107FG	6	1-1/2 lb
2 lb	15-1/4	5	1-1/2	1-9/32	1-1/4	HH66	HH108FG	2.4	108G	108FG	4	2 lb
2-1/2 lb	16-1/4	5-7/16	1-21/32	1-27/64	1-23/64	HH69	HH109110FG	3.0	109G	109FG	4	2-1/2 lb
3 lb	16-1/4	5-7/8	1-23/32	1-15/32	1-15/32	HH71	HH109110FG	3.4	110G	110FG	4	3 lb



Utility Ball Peen — D Series

Head Weight	Overall Length	Head Length	Bell Diameter	Face	Peen	Replacement Handle	Weight With Handle (lb)	Shot Blasted Head Finish	Std. Pkg. Qty.	Head Weight
		A	B	C	D			Part Number		
8 oz	12	3-1/8	15/16	13/16	25/32	HH53	.66	63D	6	8 oz
12 oz	12	3-3/4	1-3/32	15/16	15/16	HH59	1.0	64D	6	12 oz
1 lb	14-1/4	4	1-5/32	63/64	1	HH59	1.3	65D	6	1 lb
1-1/4 lb	14-1/2	4-3/16	1-9/32	1-1/8	1-3/64	HH59	1.5	66D	6	1-1/4 lb
1-1/2 lb	14-3/4	4-9/16	1-21/64	1-9/64	1-1/8	HH66	1.8	67D	6	1-1/2 lb
2 lb	15-1/4	5	1-1/2	1-9/32	1-1/4	HH66	2.4	68D	4	2 lb
2-1/2 lb	16-1/4	5-7/16	1-21/32	1-27/64	1-23/64	HH69	3.0	69D	4	2-1/2 lb
3 lb	16-1/4	5-7/8	1-23/32	1-15/32	1-15/32	HH71	3.4	70D	4	3 lb
2-1/2 lb	16-1/4	5-7/16	1-21/32	1-27/64	1-23/64	HH69	3.0	109G	4	2-1/2 lb
3 lb	16-1/4	5-7/8	1-23/32	1-15/32	1-15/32	HH71	3.4	110G	4	3 lb