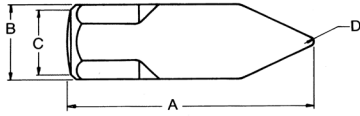


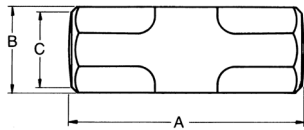
Only *Martin* Provides This Added Warranty —  
If a Hammer Head Should Loosen at Any Time,  
Return It for Handle Replacement or a New Hammer.

Always wear eye protection. A hammer blow should always be struck squarely.  
Avoid glancing blows. Never use hammers, punches or chisels with “mushroomed” heads.



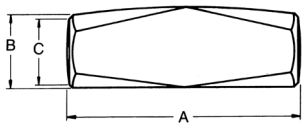
## Cross Peen Engineer / Blacksmith Hand

Head Weight	Overall Length	Head Length	Bell Diameter	Face	Peen	Replacement Handle	Weight With Handle (lb)	Industrial Black Head Finish	Std. Pkg. Qty.	Head Weight
		A	B	C	D			Part Number		
2 lb	15-1/2	4-3/4	1-1/2	1-9/32	3/16R	HH45	2.7	121G	4	2 lb
2-1/2 lb	15-1/2	5-1/16	1-9/16	1-11/32	3/16R	HH45	3.2	122G	4	2-1/2 lb
3 lb	15-1/2	5-1/4	1-5/8	1-25/64	1/4R	HH45	3.7	123G	4	3 lb



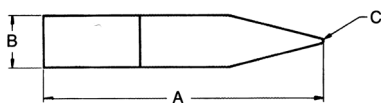
## Double Faced Engineer's / Blacksmith

Head Weight	Overall Length	Head Length	Bell Diameter	Face	Replacement Handle	Weight With Handle (lb)	Industrial Black Head Finish	Std. Pkg. Qty.	Head Weight
		A	B	C			Part Number		
2 lb	15-1/2	4	1-1/2	1-9/32	HH45	2.7	141G	4	2 lb
2-1/2 lb	15-1/2	4-1/2	1-1/2	1-9/32	HH45	3.2	142G	4	2-1/2 lb
3 lb	15-1/2	5-1/16	1-9/16	1-11/32	HH45	3.7	143G	4	3 lb



## Hand Drilling

Head Weight	Overall Length	Head Length	Bell Diameter	Face	Replacement Handle	Weight With Handle (lb)	Industrial Black Head Finish	Std. Pkg. Qty.	Head Weight
		A	B	C			Part Number		
2 lb	10-1/2	4-1/16	1-3/8	1-3/32	HH92	2.6	192G	4	2 lb
3 lb	10-1/2	4-3/8	1-1/2	1-9/32	HH92	3.6	193G	4	3 lb
4 lb	10-1/2	4-5/8	1-5/8	125/64	HH92	4.4	194G	4	4 lb



## Scaling Hammer (Boiler Pick)

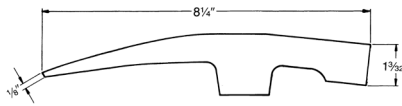
Head Weight	Overall Length	Head Length	Face Length	Face Radius	Replacement Handle	Weight With Handle (lb)	Industrial Black Head Finish	Std. Pkg. Qty.	Head Weight
		A	B	C			Part Number		
1 lb	14	5-9/16	1-1/32	1/16	HH59	1.4	132G	6	1 lb



# Hammers

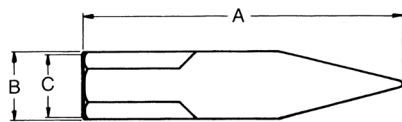
Only *Martin* Provides This Added Warranty —  
If a Hammer Head Should Loosen at Any Time,  
Return It for Handle Replacement or a New Hammer.

Always wear eye protection. A hammer blow should always be struck squarely.  
Avoid glancing blows. Never use hammers, punches or chisels with “mushroomed” heads.



## Brick Hammer

Head Weight	Overall Length	Replacement Handle	Weight With Handle (lb)	Industrial Black Head Finish	Std. Pkg. Qty.	Head Weight
				Part Number		
1-1/2 lb	11	HH173FG	2.0	173	6	1-1/2 lb



## Tinner's Riveting Hammer

Head Weight	Overall Length	Head Length	Head Width	Face Width	Replacement Handle	Weight With Handle (lb)	Industrial Black Head Finish	Std. Pkg. Qty.	Head Weight
		A	B	C			Part Number		
4 oz	9-1/4	3-11/16	9/16	15/32	HH50	.38	25G	6	4 oz
8 oz	11	4-1/4	3/4	21/32	HH53	.76	26G	6	8 oz
12 oz	13-1/2	4-3/4	29/32	25/32	HH801	1.1	27G	6	12 oz
1 lb	14	5-1/8	31/32	27/32	HH801	1.4	28G	6	1 lb

## Hickory Hammer Handles

Part Number	Std. Pkg. Qty.	Approx. Length	Use For
HH42A18	12	18	165 Body Hammer
HH42B	12	12	All Body Hammers (Except 165 & 155)
HH42BN	12	12	Hickory Handle for all other Body Hammers - New
HH45	12	16	Cross Peen and Double Face Eng. and 155
HH49	12	9-3/4	2 oz. Ball Peen
HH50	12	10	4 oz. Ball Peen/4 oz. Riveting
HH53	12	12	8 oz. Ball Peen/8 oz. Riveting
HH59	12	14-1/2	12 oz. Ball Peen
HH59	12	14-1/2	1 lb, 1-1/4 lb Ball Peen
HH66	12	16	1-1/2, 2 lb Ball Peen
HH69	12	17	2-1/2 lb Ball Peen
HH71	12	17	3 lb Ball Peen
HH92	12	10-1/2	All Hand Drilling
HH801	12	13-3/4	12 & 16 oz. Riveting and Settling
HH418	12	32	4 lb Sledge
HH6810	12	33	6, 8 & 10 lb Sledge
HH1216	12	35	12 & 16 lb Sledge



## Fiberglass Replacement Handle Kits

Part Number	Std. Pkg. Qty.	Approx. Length	Use For
HH105106FG	1	13	1 lb and 1-1/4 lb Ball Peen — G Series
HH107FG	1	14	1-1/2 lb Ball Peen — G Series
HH108FG	1	16	2 lb Ball Peen — G Series
HH109110FG	1	16	2-1/2 lb and 3 lb Ball Peen — G Series
HH173FG	1	12-1/2	1-1/2 lb Brick Hammer
HHBFFG	1	12	All Body Hammers with 12" Handle

