

CHARGING AND RECOVERY EQUIPMENT



ARCTIC COMMANDER



Mastercool introduces its new ARCTIC COMMANDER line of R/R/R machines. Equipped with the latest technology, all models come standard with an 8" command center. The graphic user interface (GUI) will enable navigation through all functions and features with the greatest of ease. There is no longer a need to read any external instructions or paper manuals, simply sit back, watch and learn how to use your machines. All machines are also equipped with Wi-Fi capabilities; allowing for real-time, interactive communication and troubleshooting. ***It's about time somebody introduced R/R/R machines for the 21st century!***

SPECIFICATIONS:

- Design Certified:
R1234yf - SAE J2843
R134a - SAE J2788
- Voltage: 110 V / 60 Hz or 220 V / 50/60 Hz
- Scale Resolution: .02 lb (10 g)
- Working Temperature Range: 50/120°F (10/49°C)
- Compressor: Hermetically sealed, 12cc, high pressure
- Recovery Speed: 95% at 70 to 75°F (21 to 24°C) <30 minutes
- Recovery Cylinder: 30 lb (12.5 liters), refillable
- Charge Accuracy: ±0.5 oz. at 70 to 75°F (±15 g at 21 to 24°C)
- Filter System:
R1234yf - 1 filter for cleaning and water removal
R134a - 2 filters for cleaning and water removal
- Hoses: 96" (250 cm)
- Pressure Gauges: Class 1
- Cylinder Temperature Sensor: Integrated
- Cylinder Heater: Standard Equipment
- Dimensions (mm): 1150 (h) x 600 (w) x 770 (d)



WI-FI

Wi-Fi capability allows for real time, interactive communication and troubleshooting



COMPACT DESIGN

The machine's compact design makes it easy to maneuver and requires minimal shop space

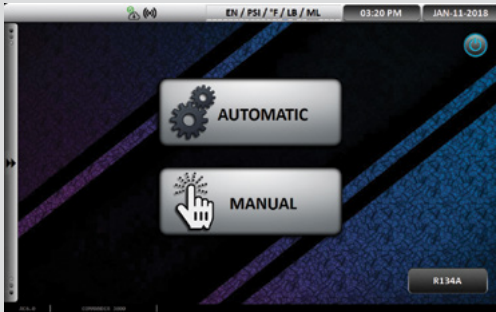


COOLING FAN

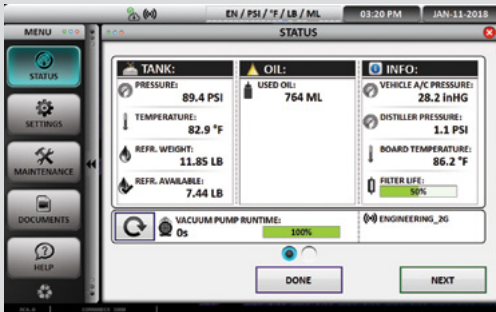
Dedicated PC board cooling fan keeps the PC board consistently cool



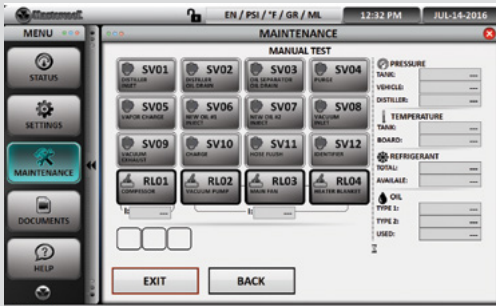
8" COLOR TABLET WITH TOUCH SCREEN FEATURES:



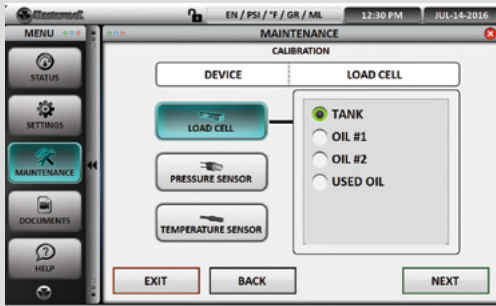
Home Screen
allows for quick touch selection of options



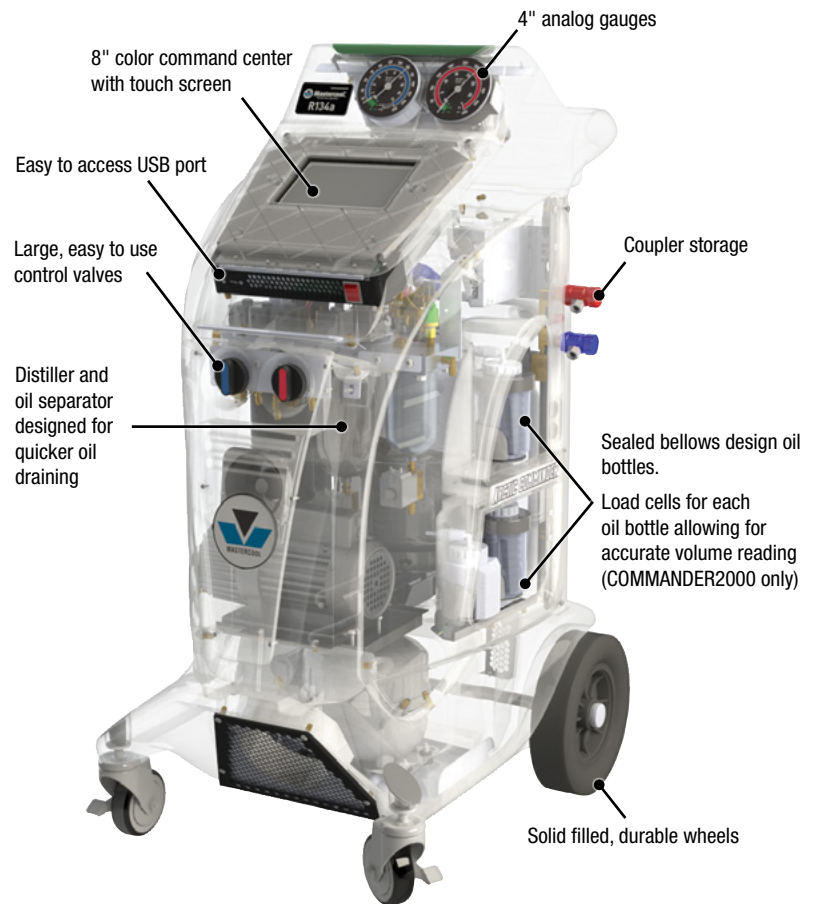
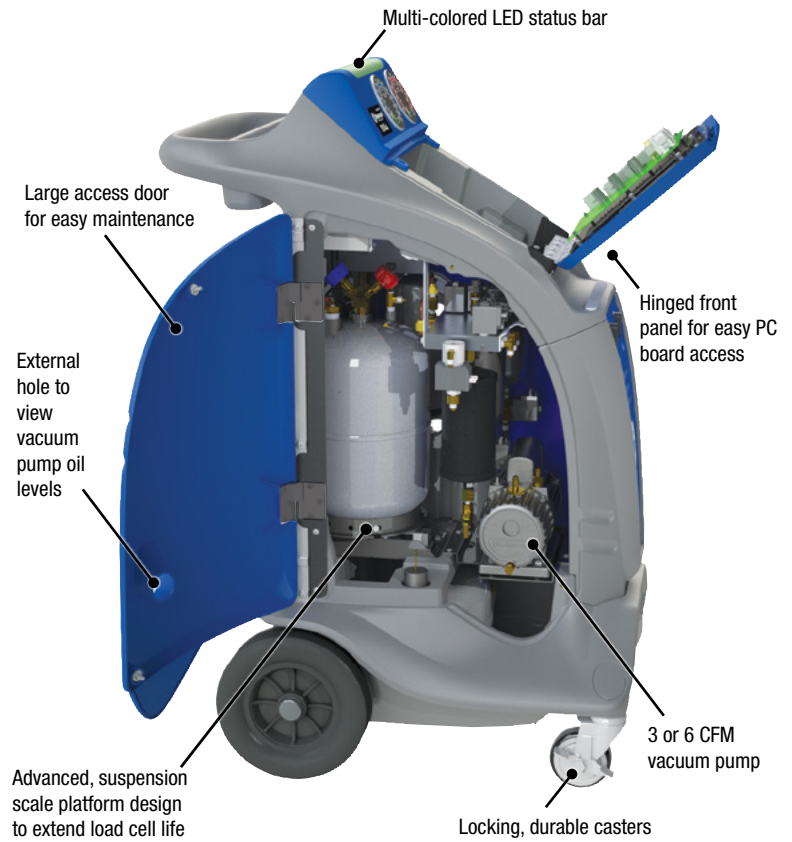
Status Screen
for quick reference of resources



Maintenance Screen
offered only to authorized service technicians allowing for quick and easy diagnosis



Maintenance Screen
offered only to authorized service technicians allowing for quick and easy diagnosis





COMMANDER4000



COMMANDER3000



COMMANDER2000



COMMANDER1000

	COMMANDER4000 (110V) R1234yf & HYBRID	COMMANDER3000 (110V) R134a & HYBRID	COMMANDER2000 (110V) R134a FULLY AUTOMATIC	COMMANDER1000 (110V) R134a SEMI-AUTOMATIC
8" Color Command Center with Touch Screen	X	X	X	X
Automatic and Manual Procedures	X	X	X	Manual procedures only
Refrigerant Database	X	X	X	Optional
Automatic Vacuum Leak Test: Programmable	X	X	X	X
Auto Oil Discharge	X	X	X	X
Auto and Manual Air Purge	X	X	X	X
Auto Filter and Full Tank Alarm	X	X	X	X
Low Refrigerant Alarm	X	X	X	X
Auto Oil Injection	N/A	N/A	X	N/A
Thermal Printer	X	X	Optional	Optional
Hose Flushing	X	X	N/A	N/A
Vehicle A/C System Flushing	Optional	Optional	N/A	N/A
Tank Heater	X	X	X	X
Vacuum Pump	6 CFM	6 CFM	6 CFM	3 CFM
Refrigerant Identifier	X	N/A	N/A	N/A
On-board Instruction Manual	X	X	X	X
Multiple Languages	X	X	X	X
On-board Unit Conversion Calculator	X	X	X	X
New Cabinet Design for Increased Air Flow	X	X	X	X
Large Analog Gauges	X	X	X	X
Hard Wired Power Cord	X	X	X	X
Hose Coupler Storage	X	X	X	X
Solid Durable Wheels with Locking Casters	X	X	X	X
Multi-colored LED Status Bar	X	X	X	N/A
Self-Diagnostic Check	X	X	X	X
Wi-Fi Capable	X	X	X	X
Dust Cover	X	X	X	X
Dimensions (mm): 1150 (h) x 600 (w) x 770 (d)	X	X	X	X

For a R1234yf machine without a refrigerant identifier, please use part number COMMANDER4000-X (for 110V model)

NOTE: Per SAE J2843, the COMMANDER4000-X will work only in conjunction with an external identifier