

SANDING BLOCKS

SB-1 Soft Block



The original flexible sanding block features two different densities to achieve the ultimate in block sanding of curved or irregularly shaped surfaces.

Size: 2-5/8"x5-1/4"
Application: Wet & Dry Sanding, Color Sanding

WB-1 Wonder Block



A large, ergonomically designed block with a unique profile that offers maximum gripping power over flat to slightly curved surfaces.

Size: 2-1/2"x6-1/2"
Application: Dry Sanding, Color Sanding, PSA Rolls or Sheets

RK-1 Rocker Block



Wrap a 6" sanding disc around this block for any type of sanding. Features a unique radius edge for contour sanding. Rigid inner layer prevents transfer of finger marks.

Size: 2-3/4"x6"
Application: Wet & Dry Sanding, Filler Sanding, Color Sanding, Contour Sanding

RKH-1/RKL-1 Hook & Loop Rocker Blocks

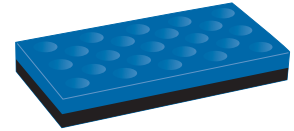


Rocker Block models designed for 6" hook (RKH-1) and Loop (RKL-1) faced abrasive discs. Designed to reduce consumable costs and make quick work of sanding contours.

This unique two-sided block features a blue side with holes which act like a grater for 30% faster cutting. Black side is for less aggressive blocking.

Size: 2-5/8"x5-1/4"
Application: Fast Blocking, Filler Sanding, Dry Sanding

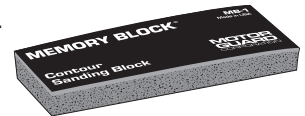
HT-1 Holey Terror



A firm vinyl side offers extreme curving power for fender crowns and motorcycle tanks. Other side features soft yet dense memory foam to reduce pressure on nibs, louvers, etc.

Size: 2-5/8"x6-1/2"
Application: Dry Sanding, Color Sanding

MB-1 Memory Block



Utilizes a standard sheet folded into thirds. Unique radius sides lift the edges of the PSA sheet away from the work surface for smoother, more even sanding.

Size: 2-5/8"x5-3/8"
Application: Wet Sanding, Fine Color Sanding, Contour Sanding

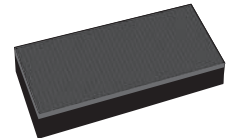
RL-1 Roller Block



Soft and flexible for scuffing areas not accessible to rigid blocks. Designed to evenly distribute pressure, imparting an even tooth over the entire panel in a single pass.

Size: 4"x6"
Application: Scuffing

BBS-1 Soft Backer Block



BIG BLOCKS

BG6-1/BGK6-1 Standard Big Block



Power up hand sanding with these large, flexible blocks that feature multi-layered construction and radius edges to match contours. BG6-1 (Standard) BGK6-1 (Hook Face)

Size: 2-5/8x6-1/2"
Application: Dry Sanding, Filler Sanding, Blocking

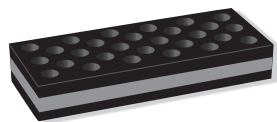
Maximum length Big Block for fast blocking over large areas. Unique multi-layered construction flexes to match curved panels. BG12-1 (Standard) BGK12-1 (Hook Face)

Size: 2-5/8x12"
Application: Dry Sanding, Filler Sanding, Blocking

BG12-1/BGK12-1 Standard Big Block



BGH6-1 Hole-Side Big Block



This one-of-a-kind Big Block features a hole side that acts like a grater for faster cutting. smooth side is for less aggressive blocking and radius edges match body contours.

Size: 2-5/8x6-1/2"
Application: Fast Blocking, Filler Sanding, Dry Sanding

A soft-sided Big Block for fine color sanding over large areas. Rigid inner layer prevents the transfer of finger marks and radius edges match body contours.

Size: 2-5/8x6-1/2"
Application: Wet & Dry Sanding, Color Sanding

BGS6-1 Soft-Side Big Block



BGR-1 Rigid Block



Create the ultimate blocking bar by wrapping an abrasive sheet around this narrow rigid block. Just the right width for power blocking in small areas, this block flexes slightly to follow contours.

Size: 1-1/2x11"
Application: Blocking and Sanding Contours and Small Areas

An extra-rigid sanding block that flexes just enough to follow slightly curved surfaces. A comfort-fit block for high-production blocking and other demanding applications. BGR6-1 (Standard) BGRK6-1 (Hook Face)

Size: 2-5/8x5-1/2"
Application: Aggressive Blocking, Filler Sanding

BGR6-1/BGRK6-1 Rigid Block



BGR12-1/BGRK12-1 Rigid Block



For aggressive two-handed blocking, this rigid sanding block is unequalled. Super flat face flexes just enough to follow slightly curved surfaces. BGR12-1 (Standard) BGRK12-1 (Hook Face)

Size: 2-5/8x11"
Application: Aggressive Blocking, Filler Sanding

Power block the largest panels with speed and power with our longest rigid sanding block. Users of this block report maximum material removal in minimal time. BGR16-1 (Standard) BGRK16-1 (Hook Face)

Size: 2-5/8x16"
Application: Aggressive Blocking, Filler Sanding

BGR16-1/BGRK16-1 Rigid Block

