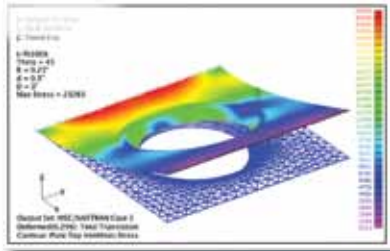


Part #	Dia.	Part #	Dia
15835	.75"	15865	2.5"
15840	1.0"	15870	3.0"
15850	1.5"	15875	3.5"
15860	2.0"	15880	4.0"

Set #	Dies Included
15810	15835, 15840, 15850, 15860, 15865
15815	15870, 15875, 15880



FLARED HOLE DIES

15810
15815

Often called "dimple dies," flared hole dies are used in sheet-metal fabrications to provide rigidity and strength to flat panels. Due to the resulting high strength-to-weight ratio flared holes are found in many aircraft and race vehicle designs.

Beginning with comprehensive finite element analysis supported by extensive prototype testing, our light weight Flared Hole Dies are engineered to provide the optimum combination of performance attributes:

- Eliminate edge tearing when used on chromoly, even with edges hardened by laser cutting methods
- Will flare holes in chromoly up to .090" thick or flare holes in up to .125" mild steel
- Manufactured from high quality hardened tool steel
- Available for hole diameters from 3/4" to 4"



FASTRAX™ CAMBER / CASTER GAUGE

Portable, hands-free alignment can be done quickly and easily with the **FasTrax™ Adjustable Camber/Caster Gauge**. This tool will help you fine tune your alignment for optimal tracking and handling while minimizing alignment headaches.

- Includes gauge and wheel mount.
- Saves time and tires.
- Displays Camber ±4° / Caster -4° to +12°.
- Accurate, rugged and easy-to-use.

91000 Standard - Fits wheels 13" to 17"
Optional Toe Adapter Kit (91100) sold below.

91010 Performance - Fits wheels 17" to 22"
Optional Toe Adapter Kit (91100) sold below.

91025 Off-Road - Fits Wheels 13" to 17" **91025**
Align off-road wheels - tire sizes up to 44".
Includes longer toe arms, bungee cord & tape measure.

91030 No Lip Adapter
A quick adapter to attach the FasTrax to wheels without an outer "lip". Fits on the 91000, 91010 and 91025.

91100 Optional Toe Adapter Kit
Simply lower the toe arms and insert tape measure into slot. Then measure to opposite tire reference point for accurate and fast toe readings. Includes 2 arms and reinforcement blocks that install easily onto either the 91000 or the 91010.



See page 176 for more on our Popular FasTrax™

91000 91010 91025

FASTRAX™ CAMBER / CASTER GAUGE

This great tool is a must for all garages and shops -plus, it can't be beat at the track.

Portable, hands-free alignment can be done quickly and easily with the **FasTrax™ Adjustable Camber/Caster Gauge**. This tool will help you fine tune your alignment for optimal tracking and handling while minimizing alignment headaches.

- Includes gauge and wheel mount.
- Displays Camber $\pm 4^\circ$ / Caster -4° to $+12^\circ$.
- Saves time and tires.
- Accurate, rugged and easy-to-use



91010

91000 Standard - Fits wheels 13" to 17"
Optional Toe Adapter Kit (91100) sold below.

91010 Performance - Fits wheels 17" - 22"
Optional Toe Adapter Kit (91100) sold below.

91025 Off-Road - Fits Wheels 13" to 17"
Align off-road wheels - tire sizes up to 44".
Includes longer toe arms, bungee cord & tape measure.

91030 No lip adapter
A quick adapter to attach the FasTrax to wheels without an outer "lip". Fits on the 91000, 91010 and 91025.

91040 Heavy Duty - Fits Wheels 21" to 26"
Perfect to add to your PMs - Check your alignment in just 5 minutes.
Includes extra length toe arms, heavy duty tape measure and no lip adapters.



91040 - See Page 149 for more

If you do these jobs at your garage - you need the FasTrax Camber/Caster Gauge!

- Install adjustable control arms
- Replace idler arms and tie rod ends
- Replacing struts
- Install adjustable bushings
- Collision repair estimates
- Frame straightening

SPC'S Alignguide™ is the perfect companion for our FasTrax. For more on this alignment specification app see page 179.



91025



91030



We have a FasTrax for your use:

- Garage
- Racing
- Performance
- Off-Road
- Muscle
- Semi's



91000 w/91100



91025

91100



FASTRAX™ TOE ADAPTER SET

Simply lower the toe arms and insert tape measure into slot. Then measure to opposite tire reference point for accurate and fast toe readings. Includes 2 arms and reinforcement blocks that install easily onto either the 91000 or the 91010.



For more convenience we recommend using two FasTrax with Toe Adapters (use one on each side of the vehicle).