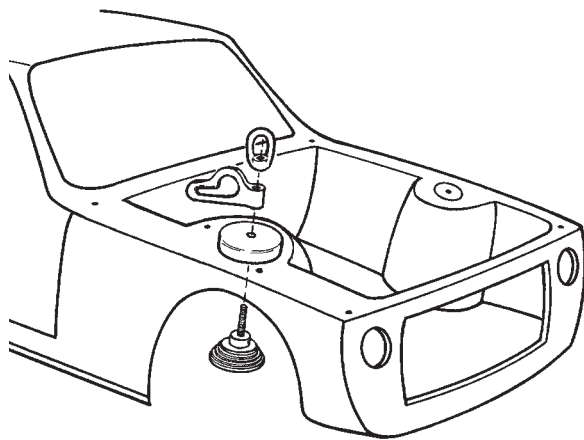


Boltless Strut Tower Puller

Since many automobile shock towers are manufactured without bolts, they present a special problem for the auto body professional.



How can a multi-directional puller be securely attached?

Before removing the strut, it is recommended that the amount and direction of the necessary correction be measured.

NOTE: Use in conjunction with your chassis dimension and specification charts.

Before pulling, center-punch one or two marks close to the tower plate. Use these center-punch marks as reference points to indicate the amount of pull needed.

Installation instructions:

Remove strut from tower area.

Insert come up through bottom of tower.

Install cap, side pull attachment, and eye nut.

Position side pull attachment in direction of pull and tighten eye nut.

#2450 Boltless Strut Tower Puller

Specifications:

Overall length: 0" (000 mm)

Weight: 0 lbs (00 kg)

Capacity: 00 tons (0,000 kg)

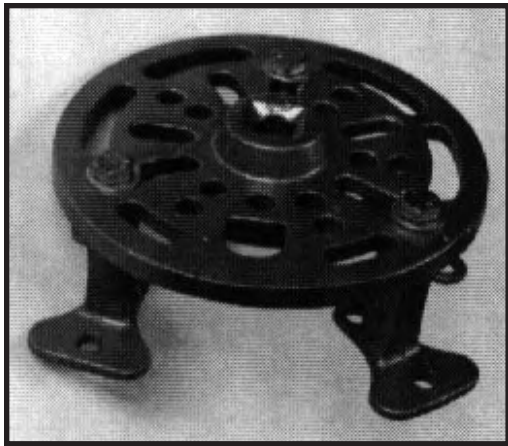
100% Made in U.S.A.

6920 SW 111th Avenue, Beaverton, OR 97008 USA
1-800-678-5548 • (503) 644-9167 • Fax (503) 644-2733
www.moclamp.com email: sales@moclamp.com

© Pull-It Corporation

moclamp
Mo-Clamp®
Collision Repair Tools

Other Strut Tower (with bolts) Adapter Plates



#2100

Designed for 95% for the various
strut tower bolt patterns.

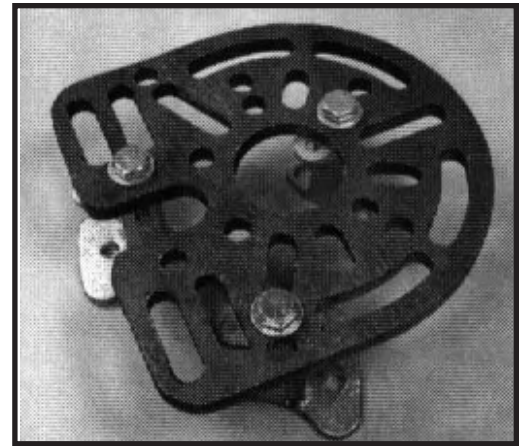
Original design.

Specifications:

Overall length: 0" (000 mm)

Weight: 0 lbs (00 kg)

Capacity: 00 tons (0,000 kg)



#2400

Designed for a wider variety of
McPherson strut towers.

The 2400 is more versatile.

Specifications:

Overall length: 0" (000 mm)

Weight: 0 lbs (00 kg)

Capacity: 00 tons (0,000 kg)

100% Made in U.S.A.

6920 SW 111th Avenue, Beaverton, OR 97008 USA
1-800-678-5548 • (503) 644-9167 • Fax (503) 644-2733
www.moclamp.com email: sales@moclamp.com

© Pull-It Corporation

moclamp
Mo-Clamp®
Collision Repair Tools