



FOR REFERENCE ONLY
Color chips may slightly vary in color

BUMPER COATER™ | NO ADHESION PROMOTER REQUIRED



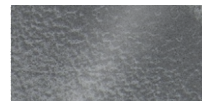
39073 Gloss Silver
Color Coat™ Formula: 4561



39283 Lt Titanium Met
Color Coat Formula: 4563



39253 Med Titanium Met
Color Coat Formula: N/A



39173 Dk Smoke
Color Coat Formula: 4307



39183 Med Gray
Color Coat Formula: 4296



39193 Dk Gray
Color Coat Formula: 4295



39263 Dk Titanium Met
Color Coat Formula: 4533



39273 Charcoal Met
Color Coat Formula: 4553



39153 Charcoal
Color Coat Formula: 4109



39163 Med Smoke
Color Coat Formula: 4305



39103 Flexible Black
Color Coat Formula: N/A



39293 Honda Black
Color Coat Formula: N/A



39083 Gloss Black
Color Coat Formula: N/A



TRIM BLACK | EXCELLENT ADHESION, NO PRIMER NEEDED ON METAL



39033 Charcoal Metallic



39063 Gloss Black



39143 Black



49153 Trim Black Ultra - Gloss



49143 Trim Black Ultra - Satin



49133 Trim Black Ultra - Matte

HIGH-BUILD PRIMER SURFACER | EXCELLENT ADHESION, FILM BUILD & FLEXIBILITY



42003 Black



42013 Gray



42023 Beige



42033 Rose



42043 White



STEP 1: PREP & PRIME

① If damage is present, refer to **Plastic Repair Standard Operating Procedure** first.

Clean with **Scuff & Clean** and a gray scuff pad. Rinse with water and dry with clean, lint-free cloth. Clean with **SEM Solve, Plastic & Leather Prep** or **XXX Universal Surface Cleaner**. Wipe clean in one direction with clean, lint-free cloth. Sand and prime per instructions.



STEP 2: GUIDE COAT & SAND

Apply **Guide Coat Black** or **Premium Powder Guide Coat** to dried primer. Sand with P320 – P400 grit. Finish sanding with P600 grit.

Blow off and wipe with a tack rag.

If no texture is needed, proceed to Step 3.



IF TEXTURE IS NEEDED

Re-clean, if necessary, with **Plastic & Leather Prep, SEM Solve** or **XXX Universal Surface Cleaner**.

Spray **Bumper Coater** as a wet bed. While it is still wet, apply **Texture Coating** in light coats 16" – 24" from surface.

- To produce bigger droplets, spray closer to the surface. To produce smaller droplets, spray farther from the surface.
- To increase spacing between droplets, spray fast. To decrease spacing between droplets, spray slow.

Allow to flash for 10 minutes.

- ① Apply additional coats in the same manner if needed to achieve OEM texture.
- ① Be sure to apply lightly enough so that raised texture droplets do not flow together.

Grainy texture: No adjustment is needed

Round texture: Lightly sand by hand with a gray scuff pad or P800 grit sandpaper

Flat texture: Sand with a block or by hand using P400 – P600 grit sandpaper

Blow off and wipe with a tack rag.

Texture Coating must be topcoated.



WATCH THE VIDEO:
Learn how to duplicate OEM Textures

Scan the QR code or go to semproducts.com/sfcc



STEP 3: PAINT

Apply **Bumper Coater** or **Factory Pack™** per instructions.

PRODUCT LIST

PREP

Part	Product	Size
38391	Scuff & Clean	Gal Pump
38398	Scuff & Clean	16 oz. Tube
38371	SEM Solve	Gallon
38373	SEM Solve	20 oz. Aero
38374	SEM Solve	Square Qt
38351	Plastic & Leather Prep	Gallon
38353	Plastic & Leather Prep	16 oz. Aero
38354	Plastic & Leather Prep	Square Qt
77771	XXX Universal Surface Cleaner	Gallon
77774	XXX Universal Surface Cleaner	Quart

HIGH-BUILD PRIMER SURFACER AEROSOLS

Part	Color	Size
42003	Black	20 oz. Aero
42013	Gray	20 oz. Aero
42023	Beige	20 oz. Aero
42033	Rose	20 oz. Aero
42043	White	20 oz. Aero

GUIDE COAT

Part	Product	Size
38203	Guide Coat Black	16 oz. Aero
38253	Premium Powder Guide Coat	16 oz. Aero

TEXTURE

Part	Product	Size
39853	Texture Coating	20 oz. Aero
39854	Texture Coating	Quart
39793	Heavy Texture Chip Guard	20 oz. Aero
39803	Clear Chip Guard	20 oz. Aero
39804	Clear Chip Guard	Cone Quart
39813	Satin Black Chip Guard	20 oz. Aero
39814	Satin Black Chip Guard	Quart

PAINT

Part	Product	Size
39101	Bumper Coater - Black	Gallon
39104	Bumper Coater - Black	Quart
39101-LV	Low VOC Flexible Bumper Coater Black	Gallon
39104-LV	Low VOC Flexible Bumper Coater Black	Quart
39073 - 39293	Bumper Coater - 13 Colors	16 oz. Aero
19013 - 19543	Factory Pack - 40 Colors	16 oz. Aero

Go to semproducts.com for a complete list of sizes and colors.

SEM Products, Inc.
Rock Hill, SC 29730
Tech Support: 1-800-831-1122
Customer Care: 1-866-327-7829
semproducts.com

