



Do not attempt to charge damaged batteries.



Do not expose battery to fire.

⚠ DANGER

Do not expose battery to spark or flame. Battery liquid may burn.

Do not splash or immerse in water or other liquids. This may cause premature cell failure.

Failure to comply may result in serious injury or death.

⚠ DANGER

Never attempt to open the battery pack for any reason. If the plastic housing of the battery pack breaks or cracks, return to a service center for recycling.

Failure to comply may result in serious injury or death.

Charger

- 1 Before using this battery charger, read all instructions and cautionary markings on battery charger, battery pack, and product using battery.

⚠ CAUTION

Do not charge Lincoln model 1401 battery packs with any other charger.

To reduce risk of injury, Lincoln model 1410 charger should only be used to charge Lincoln battery pack model 1401. Other types of batteries may burst causing personal injury and damage.

- 2 Do not expose charger to moisture (rain, snow or frost).
- 3 Do not abuse cord. Never carry charger by cord or yank it to disconnect from receptacle. Pull by plug rather than cord when disconnecting charger. Replace damaged or worn power cord and strain reliever immediately. **Do not attempt to repair power cord.**
- 4 Make sure cord is located so that it will not be stepped on, tripped over, or otherwise subjected to damage or stress.
- 5 Do not use an extension cord unless absolutely necessary. Use of improper extension cord could result in a risk of fire and electric shock.
- 6 Do not operate charger if it has received a sharp blow, been dropped, or otherwise damaged in any way, take it to a qualified serviceman.
- 7 Do not disassemble charger or battery pack. Take it to a qualified serviceman when service or repair is required. Incorrect reassembly may result in risk of electrical shock or fire.
- 8 Unplug charger from outlet before attempting any maintenance or cleaning to reduce risk of electric shock.
- 9 Charge the battery pack in a well ventilated place, do not cover the charger and battery with a cloth, etc., while charging.

- 10 Do not store the charger or battery packs in locations (such as a metal tool shed, or a car in the summer) where the temperature may reach or exceed 122 °F (50 °C), which can lead to deterioration of the storage battery.
- 11 Do not charge battery pack when the temperature is **below 32 °F (0 °C)** or **above 104 °F (40 °C)**. This is very important for proper operation.
- 12 Do not incinerate battery pack It can explode in a fire.
- 13 Do not short across the terminals of the battery pack. **Extremely high temperatures could cause personal injury or fire.**
- 14 Charging time will be approximately 1 hour after the initial charge.
- 15 When green light comes on indicating charge is complete, remove battery from charger. **Do not leave battery plugged into charger for an extended period of time after charge is complete.**
- 16 Dispose of expended batteries properly. The Lincoln model 1401 battery pack contains rechargeable, nickel-cadmium batteries. These batteries must be recycled or disposed of properly. Drop off expended battery packs at your local replacement battery retailer, or your recycling center.

Electrical safety



Your charger is double insulated; therefore no ground wire is required. Always check that the mains voltage corresponds to the voltage on the rating plate. Never attempt to replace the charger unit with a regular mains plug.



Notice

New batteries are shipped in an uncharged state and the initial charge will require 12 hours before use.



Notice

Users in the United States **Note:** applicable fees for the collection and recycling of these batteries have been paid to the RBRCTM. For further information, call 1-800-8BATTERY.

Tool use and care

Do not continue to hold down trigger if grease gun is stalled. This could damage the motor or cause fire.

Disconnect battery pack from tool before making any adjustments, changing accessories, or storing the tool. Such preventive safety measures reduce the risk of starting the tool accidentally.

Store the tools out of reach of children and other untrained persons. Tools are dangerous in the hands of untrained users.

If damaged, have the tool serviced before using. Many accidents are caused by poorly maintained tools.

Use only accessories that are recommended by Lincoln.

Only accessories that are capable of handling 7,000 psi (482 bar) should be used. Accessories that may be suitable for one tool may create a risk of injury when used on another tool.



WARNING

Extreme pressure may cause nozzle extension or whip hose to burst. Use only Lincoln **approved** hoses and follow whip hose instructions and warnings.

Specifications

PowerLuber Model 1440CLR

Operating power	14.4 V
Maximum operating pressure	
Low output	7,000 psi (482 bar)
High output	3,000 psi (206 bar)
Grease reservoir capacity	14.5 oz. (411 g)
Operating temperature range	0 to 122 °F (-18 to +50 °C)
Operating current	4.0 A

Rated current	5.0 A
Lubricant (Grease)	Up to NLGI #2

Grease output	
Low output	3.8 oz./min. (108 g/min.)
High output	8.5 oz./min. (241 g/min.)

Weight	8.0 lbs. (3.6 kg)
--------	-------------------

Accessories:

Battery	NiCd Model 1401
Output	14.4 V DC
Capacity	1,700 mAh

Battery Charger Model 1410

Charge time	1 Hour
Input (2.0 A)	120 V AC, 50-60 Hz

Battery Charger Model 1410E

Charge time	1 Hour
Input (2.0 A)	230 V AC, 50 Hz

Outlet Hose Model 1230

Pressure rating	7,500 psi (510 bar)
Length of hose	30 in. (760 mm)

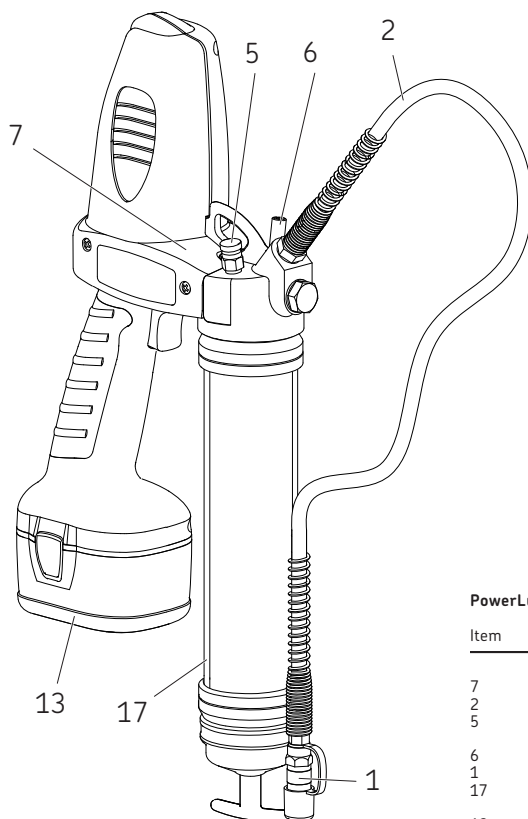
*Sound pressure Lp 74.5 dB(A), uncertainty (K) 3 dB(A), Acoustic power Lw 85.5 dB(A), uncertainty (K), 3 dB(A), Vibration emission value (ah) 2.3 m/s², uncertainty (K) 1.5 m/s².

Note 1: Operating current and grease output data at 1,000 psi (69 bar).

Note 2: The declared vibration total value has been measured in accordance with a standard test method and may be used for comparing one tool with another and the declared vibration total value may also be used in a preliminary assessment of exposure.

Note 3: The vibration emission during actual use of the power tool can differ from the declared total value depending on the ways in which the tool is used; and of the need to identify safety measures to protect the operator that are based on an estimation of exposure in the actual conditions of use (taking account of all parts of the operating cycle such as the times when the tool is switched off and when it is running idle in addition to the trigger time).

* Indicates change



PowerLuber general components

Item	Description
7	Pump assembly
2	1230 30 in. (76 cm) hose
5	Vent valve
6	Bulk valve
1	Coupler
17	Grease tube
13	1401 battery

General description

The Lincoln PowerLuber is a battery operated grease gun developed for manual lubrication of grease points.

The PowerLuber is driven by a small, low voltage electric motor connected to a three-stage planetary gear transmission. The rotary motion of the motor is converted into a reciprocating motion of the plunger using a yoke mechanism. The PowerLuber is a positive displacement single acting pump.

Thermal protector

The thermal protector acts as a safeguard, stopping the motor if gun is run continuously at maximum pressure.

Inspection

Visually inspect for damaged, loose or missing parts. If equipment is worn or damaged, remove from service. Contact an authorized service center for damage assessment or repair.

Service parts IPB1

Item	Description	Part number	Qty
1	Coupler	5852	1
2	Flexible hose 30 in. (76 cm) w/gasket	1230	1
4	Gasket (hose)	271884	1
5	Vent valve	286315	1
6	Vent/bulk valve	286134	1
7	Pump assembly	286305	1
8	Thermal protector	286253	1
9	Spring selector	286113	1
10	Gear selector	286097	1
11	Stroke indicator	286108	1
13	Battery 14.4V	1401	1
14	Packing	34793	1
15	Follower assembly	93499	1
16	Trigger	286095	1
17	(Clear) grease tube assembly	1100CLR	1
18	Terminal assembly	286096	1
19	NS*		
20	Handle	286090	1
21	Follower rod	286091	1
22	Coupler cap	286093	1

* Not shown.

Service kits IPB1

Item	Description	Part number	Qty
3	Handle with screw kit	280167	
3.1	Left handle		1
3.2	Right handle		1
3.3	Screw (M4 x 16)		6
12	Decal kit (assorted labels)	286101	
NS*	Handle with electrical components kit	280166	
	Handle with screw kit (Item 3)		1
	Electrical components		1
	Label		1

* Not shown.