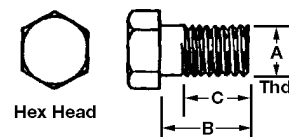


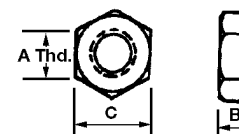


Mounting Bolts and Nuts

Part No.	A in./mm	B in./mm	C in./mm
50057	¼"-20	1½ / 38.1	¾ / 19.1



Part No.	A in./mm	B in./mm	C in./mm
51304	¼"-20	⅞ / 5.6	⅞ / 11.1
51026	⅝"-18	1⅞ / 6.7	½ / 12.7



Accessories

Supply and Feed Line Hose ⅛" ID



Part No.	Alvania #2 Grade Grease Filled Coils	Minimum Burst	Max. Working Pressure	Minimum Bending	Hose Construction
241286	26 ft. / 7.9 M	10,000 psig 690 bar	4,000 psig 276 bar	3½" 88.9 mm	Nylon Tube, Dacron Braid, Polyurethane Cvr
241287	35 ft. / 10.7 M				
241288	40 ft. / 12.2 M				
252717	200 ft. / 61 M non grease filled				

Note: Use with hose ends No. 241289 or No. 246002. Temperature range: -40° F to 212° F.

Feed Line Nylon Tubing



Part No.	Description	O.D.	Wall Thickness	Burst Pressure	Working Pressure	Minimum Bending Radius	Working Temp.
247022	500 ft./152.4 M coil non-grease filled	¼" 6.4 mm	.050" 1.3 mm	2500 psig 172 bar	625 psig 42.5 bar	.875 / 22.2	-65°F to +150°F -54°C to +65°C
242025	25 ft. / 7.6 M coil grease filled						
242050	50 ft. / 15.2 M coil grease filled						
62357	100 ft./30.5 M coil non-grease filled						
274047	25 ft. / 7.6 M coil grease filled		.062" 1.6 mm	2000 psig 138 bar	500 psig 34.5 bar	0.5 / 12.7	-65°F to +200°F -54°C to +93°C
274048	50 ft. / 15.2 M coil grease filled						
274049	100 ft./30.5 M coil non-grease filled						
274050	500 ft./152.4 M coil non-grease filled						

Steel Tubing



Part No.	Description	Max. Working Pressure
62175	⅛" OD x .020" wall 25' coil 3.2mm OD x .5mm wall 7.6m coil	4400 psig 300 bar
62176	¼" OD x .028" wall 25' coil 6.4 mm OD x .7mm wall 7.6m coil	2800 psig 190 bar

Installation Tools



Plastic Tube & Hose Cutter
Part No. 226-12508-5
 Replacement Blade
Part No. 226-13095-7



Hose Ends for 1/8" I.D. Hose

Part No.	Description
241289	1/8" NPT swedge on hose stud (Requires swedging tool)
246002	1/8" NPT field installable hose coupling (swedging tool not required)

Installation Tools



Hose Ends for Use with Quickline Fittings

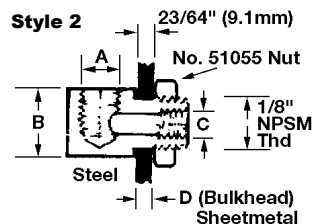
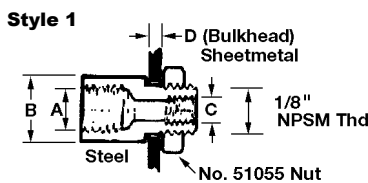
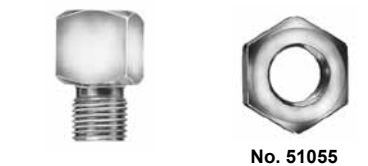
Part No.	Description
272394	Hose stud, 90° (to be used with 272427)
272401	Hose stud, straight (to be used with 272427)
272427	Threaded sleeve
274238	Stainless steel hose stud sleeve
274239	Stainless steel straight hose

Hose End Connecting Tools

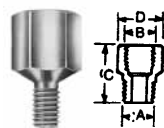
Part No.	Description
274062	Hand vise for quick connect and reusable hose ends

Bulkhead Connectors

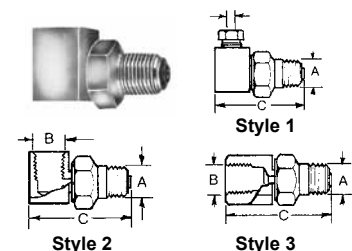
Part No.	Style	A	B	C	D
13154	1	1/8" PTF	1/2" / 12.7 mm	1/4" -28	3/16" / 4.8 mm
14054	1	1/8" PTF	1/2" / 12.7 mm	1/4" -28	1/4" / 6.4 mm
13155	2	1/8" PTF	1/2" / 12.7 mm	1/4" -28	3/16" / 4.8 mm
51055	Lock Nut 1/8" N.P.S.M. thread				



Adapter Union



Part No.	A	B	C	D
20024	1/4" -28 THD	1/8" NPSF	7/8" / 22.2mm	1/2" / 12.7 mm
67132	3/8" NPT	1/8" NPT	3/4" / 19.1mm	1 1/16" / 17.5mm Hex
20011	3/8" NPT	1/4" NPT	3/4" / 19.1mm	3/4" / 19.1mm Hex
273482	8 mm x 1.0	1/8" NPT	0.96" / 24.4mm	9/16" / 14.2mm



Swivels

Part No.	Style	A	B	C
66717	1	1/8" NPT	—	1 1/4" / 31.8mm
91048	2	1/8" NPT	1/8" NPT	1 1/4" / 31.8mm
91308	3	1/8" NPT	1/8" NPT	1 3/8" / 34.9mm

Note: Not suitable for installations requiring continuous rotation.

Steel Tubing

For supply and feedlines.

Part No.	Size (O.D. x Wall)			Working Pressure	Type
	O.D. in.	Wall in.	Length ft. / m		
62175	1/8	.020	25 / 7.6	4400 psig / 300 bar	Coil
62176	1/4	.028	25 / 7.6	2800 psig / 190 bar	coil
62249	3/8	.028	25 / 7.6	1850 psig / 126 bar	coil

Type 304 Stainless Steel Tubing

For supply and feedlines. For corrosive environments. ASTM A-269 specs.

Part No.	Size (O.D. x Wall)			Working Pressure	Type
	O.D. in.	Wall in.	Length ft. / m		
62948-9	1/8	.028	20/ 6.1	9000 psig / 612 bar	coil
62949-9	1/4	.028	20/ 6.1	4480 psig / 305 bar	coil
62950-9	3/8	.028	20/ 6.1	2980 psig / 203 bar	coil

Nylon Tubing

For feedlines. Temperature range -65°F to 150°F.

Part No.	Size (O.D. x Wall)			Working Pressure	Minimum Bend Radius in.
	O.D. in.	Wall in.	Length ft. / m		
62256	1/8	.026	25 / 7.6	625 psig / 42.5 bar	.375
62278			100 / 30.5		
62956			500 / 152		
62357	1/4	.050	100 / 30.5		.875
247022			500 / 152		