

Your single source of automotive fluid lines that install quickly, easily, and are designed to last.

BRAKE

Everything needed to replace brake lines quickly and easily is included in these convenient, all-in-one brake line replacement kits.

ULTRABEND

Brake Line Tubing

Better Flares, Simple Routing, Bend by Hand, Won't Rust or Corrode

- No bending tools required
- Smooth flares create better fitting seals
- Cuts labor time by more than 50%

- Conforms to SAE specifications, pressure-rated up to 3,000 PSI
- Rigorously tested, highest quality

UltraBEND® Tubing

IMAGE	PART#	KITS/ QTY	LINE SIZE	DESCRIPTION	QTY/ PKG
	BR-EZ100	25	3/16"	3/16" UltraBEND Brake Line	25
	BR-EZ100-50	3/16"	3/16"	3/16" UltraBEND Brake Line	50
	BR-EZ100-100	3/16"	3/16"	3/16" UltraBEND Brake Line	100
	BR-EZ200	25	1/4"	1/4" UltraBEND Brake Line	25
	BR-EZ200-50	1/4"	1/4"	1/4" UltraBEND Brake Line	50
	BR-EZ200-100	1/4"	1/4"	1/4" UltraBEND Brake Line	100
	BR-EZ300	25	5/16"	5/16" UltraBEND Tubing	25
	BR-EZ400	25	3/8"	3/8" UltraBEND Tubing	25

BR-EZ316

3/16" Brake Line Replacement Kit Includes 110 Pieces Plus 25' of UltraBEND® Tubing

BR-EZ14

1/4" Brake Line Replacement Kit Includes 40 Pieces Plus 25' of UltraBEND® Tubing

BB007

Ultimate Brake Bleeder Removal Tool Kit Includes 77 Pieces

Inverted Flare Nuts

IMAGE	PART#	KITS/ QTY	LINE SIZE	DESCRIPTION	QTY/ PKG
	BR105	10	3/16"	3/8"-24	4
	BR135	10	3/16"	3/8"-24 Long	4
	BR145	10	3/16"	7/16"-24	4
	BR150	6	3/16"	1/2"-20	4
	BR155	6	3/16"	9/16"-18	4
	BR157	10	3/16"	3/8"-24 (7/16" Wrench)	4
	BR205	4	3/16"	M10 x 1.0 Gold	4
	BR210	6	3/16"	M10 x 1.0 Blue	4
	BR270	6	3/16"	M10 x 1.0 Long	4
	BR1150	6	1/4"	7/16"-24	4
	BR1200	6	1/4"	7/16"-24 (9/16" Wrench)	4
	BR1400	6	1/4"	7/16"-24 Long	4
	BR1600	6	1/4"	9/16"-18	4
	BR1650	6	1/4"	1/2"-20	4

Unions

IMAGE	PART#	KITS/ QTY	LINE SIZE	DESCRIPTION	QTY/ PKG
	BR405	4	3/16"	3/8"-24 Inverted Flare	4
	BR435	2	3/16"	M10 x 1.0 Inverted Flare	4
	BR450	2	3/16"	M10 x 1.0 Bubble Flare	4
	BR4100	4	1/4"	7/16"-24 Inverted Flare	4

Bubble Flare Nuts

IMAGE	PART#	KITS/ QTY	LINE SIZE	DESCRIPTION	QTY/ PKG
	BR170	2	3/16"	3/8"-24	4
	BR230	6	3/16"	M10 x 1.0 (Euro, Domestic)	4
	BR235	4	3/16"	M11 x 1.5	4
	BR240	4	3/16"	M12 x 1.0	4
	BR245	4	3/16"	M13 x 1.5	4
	BR250	4	3/16"	M10 x 1.0 (VW, Audi)	4
	BR255	6	3/16"	M10 x 1.0 (Ford)	4
	BR2200	6	1/4"	M12 x 1.0	4
	BR2300	6	1/4"	M13 x 1.5	4
	BR2500	4	1/4"	M14 x 1.5 (GM)	4

Adapters

IMAGE	PART#	KITS/ QTY	LINE SIZE	DESCRIPTION	QTY/ PKG
	BR500	2	3/16"	3/8"-24 Inverted Female to M10 x 1.0 Inverted Male	4
	BR505	2	3/16"	3/8"-24 Inverted Female to M10 x 1.0 Bubble Male	4
	BR510	4	3/16"	M10 x 1.0 Bubble Female to M11 x 1.5 Bubble Male	4
	BR550	4	3/16"	3/8"-24 Inverted Female to 7/16"-24 Inverted Male	4
	BR555	4	3/16"	3/8"-24 Inverted Female to 1/2"-20 Inverted Male	4
	BR560	4	3/16"	3/8"-24 Inverted Female to 9/16"-18 Inverted Male	4

Bleeder Screws

IMAGE	PART#	KITS/ QTY	DESCRIPTION	QTY/ PKG
	BB007	1	BB007 Tool	1
	BB01	4	M10 x 1.0S Brake Bleeder Screw	5
	BB02	4	3/8"-24 NF Brake Bleeder Screw	5
	BB03	4	5/16"-24 NF Brake Bleeder Screw	5
	BB04	4	3/8"-24 NF Brake Bleeder Screw	5
	BB05	4	M10 x 1.25 Brake Bleeder Screw	5
	BB06	4	M10 x 1.5 Brake Bleeder Screw	5
	BB07	4	M7 x 1.0 Brake Bleeder Screw	5
	BB08	4	7/16"-24 NS Brake Bleeder Screw	5
	BB09	4	M8 x 1.25 Brake Bleeder Screw	5
	BB10	4	M8 x 1.0 Brake Bleeder Screw	5
	BB11	4	7/16"-20 NF Brake Bleeder Screw	5
	BB12	4	M10 x 1.0 Brake Bleeder Screw	5
	BB20	10	Small Dust Cap	5
	BB21	10	Large Dust Cap	5
	BBP1N	8	Brake Bleeder Screw Pins	8

■ Indicates quantity included in BR-EZ316 Brake Line Replacement Kit
■ Indicates quantity included in BR-EZ14 Brake Line Replacement Kit
■ Reorder quantity
■ Assortment Package Contains Various Pin Diameters

SPECIALTY

S.U.R.&R. provides an extensive line of specialty products which make everyday tasks simpler for the technician.

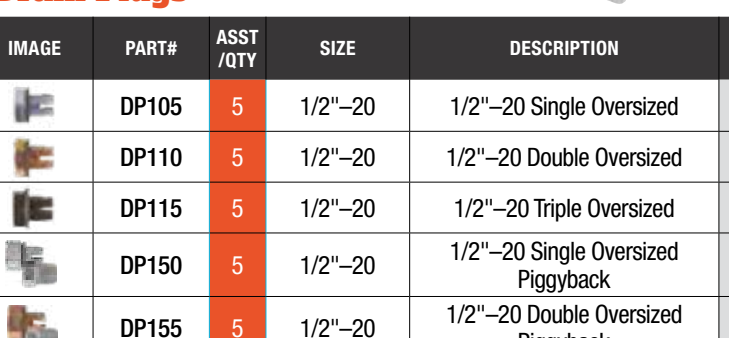
BRC7

Heavy Duty Copper Washer Assortment Includes 130 Pieces



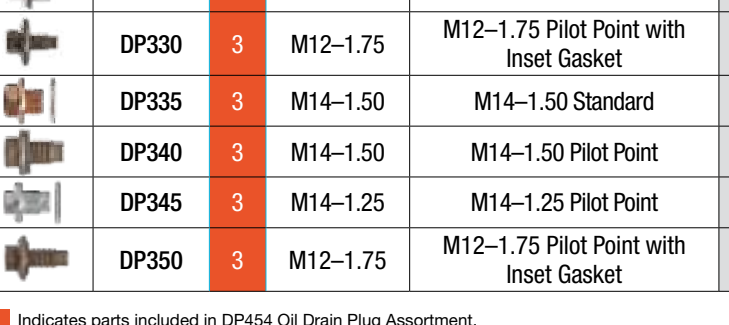
DP454

Oil Drain Plug Assortment Includes 76 Pieces with Corresponding Gaskets



HC102

Positive Seal Hose Clamp Assortment Includes 100 Seal Clamps and CP360 Seal Clamp Pliers



Drain Plugs

IMAGE	PART#	ASST/ QTY	SIZE	DESCRIPTION	QTY/ PKG
	DP105	5	1/2"-20	1/2"-20 Single Oversized	5
	DP110	5	1/2"-20	1/2"-20 Double Oversized	5
	DP115	5	1/2"-20	1/2"-20 Triple Oversized	5
	DP150	5	1/2"-20	1/2"-20 Single Oversized Piggyback	5
	DP155	5	1/2"-20	1/2"-20 Double Oversized Piggyback	5
	DP205	10	1/2"-20	1/2"-20 Standard	5
	DP210	5	1/2"-20	1/2"-20 Pilot Point	5
	DP305	5	M12-1.25	M12-1.25 Standard	5
	DP310	5	M14-1.75	M14-1.75 Pilot Point	5
	DP315	5	M14-1.50	M14-1.50 Standard	5
	DP320	3	M18-1.50	M18-1.50 Standard	5
	DP325	3	M20-1.50	M20-1.50 Standard	5
	DP330	3	M12-1.75	M12-1.75 Pilot Point with Inset Gasket	5
	DP335	3	M14-1.50	M14-1.50 Standard	5
	DP340	3	M14-1.50	M14-1.50 Pilot Point	5
	DP345	3	M14-1.25	M14-1.25 Pilot Point	5
	DP350	3	M12-1.75	M12-1.75 Pilot Point with Inset Gasket	5

■ Indicates parts included in DP454 Oil Drain Plug Assortment.

Copper Washers

IMAGE	PART#	ASST/ QTY	I.D.	DESCRIPTION	QTY/ PKG
	BRC127	20	3/8"	3/8" I.D. Copper Washer	10
	BRC137	20	7/16"	7/16" I.D. Copper Washer	10
	BRC147	20	1/2"	1/2" I.D. Copper Washer	10
	BRC157	10	9/16"	9/16" I.D. Copper Washer	10
	BRC227	20	10 mm	10 mm I.D. Copper Washer	10
	BRC247	20	12 mm	12 mm I.D. Copper Washer	10
	BRC277	10	15 mm	15 mm I.D. Copper Washer	10
	BRC287	10	16 mm	16 mm I.D. Copper Washer	10

■ Indicates parts included in BRC7 Heavy Duty Copper Washer Assortment.

Hose Clamps

IMAGE	PART#	ASST/ QTY	SIZE	DESCRIPTION	QTY/ PKG
	K2978	10	1/4"	1/4"-360° Seal Clamp	10
	K2980	10	5/16"	5/16"-360° Seal Clamp	10
	K2982	10	3/8"	3/8"-360° Seal Clamp	10
	K2984	10	1/2"	1/2"-360° Seal Clamp	10
	K8006	10	9/16"	9/16"-360° Seal Clamp	10
	K8007	10	11/16"	11/16"-360° Seal Clamp	10
	K8008	10	23/32"	23/32"-360° Seal Clamp	10
	K8010	10	3/4"	3/4"-360° Seal Clamp	10
	K8011	10	7/8"	7/8"-360° Seal Clamp	10
	K8012	10	15/16"	15/16"-360° Seal Clamp	10
	CP360	1	Up to 1" O.D.	360° Seal Clamp Pliers	1

■ Indicates parts included in HC102 Positive Seal Hose Clamp Assortment.

Hose To Compression Union Adapters

IMAGE	PART#	KITS/ QTY	LINE SIZE	DESCRIPTION	QTY/ PKG
	AC1638	1	3/8"	#6 Hose To 3/8" Compression Union	1
	AC1812	1	1/2"	#8 Hose To 1/2" Compression Union	1
	AC1058	2	5/8"	#10 Hose To 5/8" Compression Union	1
	AC1234	2	3/4"	#12 Hose To 3/4" Compression Union	1

Hose To Compression Union Adapters—Straight

IMAGE	PART#	KITS/ QTY	LINE SIZE	DESCRIPTION	QTY/ PKG
	HL1212	2	1/2" (13 mm)	1/2" Hose to 1/2" Compression Union*	1
	HL1258	2	5/8" (16 mm)	1/2" Hose to 5/8" Compression Union*	1
	HL1234	4	3/4"	1/2" Hose to 3/4" Compression Union*	1

*Indicates parts included in HL427 Heater Line Repair Kit

Hose (UNIVERSAL HOSE Use with all S.U.R.&R. Heater Adapters)

IMAGE	PART#	KITS/ QTY	LINE SIZE	DESCRIPTION	QTY/ PKG
	HL12H	1	Universal	1/2" Heater Hose 10' Roll	10'
	HL12H25	1	Universal	1/2" Heater Hose 25' Roll	25'

Dual Clamp

IMAGE	PART#	KITS/ QTY	LINE SIZE	DESCRIPTION	QTY/ PKG
	HL34C	4	3/4"	3/4" Heater Hose Dual Clamp (Use with 1/2" Heater Hose)	5

Hose Spring

IMAGE	PART#	KITS/ QTY	LINE SIZE	DESCRIPTION	QTY/ PKG
	SP34	1	3/4"	3/4" Heater Hose Spring (Use with 1/2" Heater Hose)	1

Tools

IMAGE	PART#	KITS/ QTY	LINE SIZE	DESCRIPTION	QTY/ PKG
	CP360	1	Up to 1" O.D.	360° Seal Clamp Pliers	1

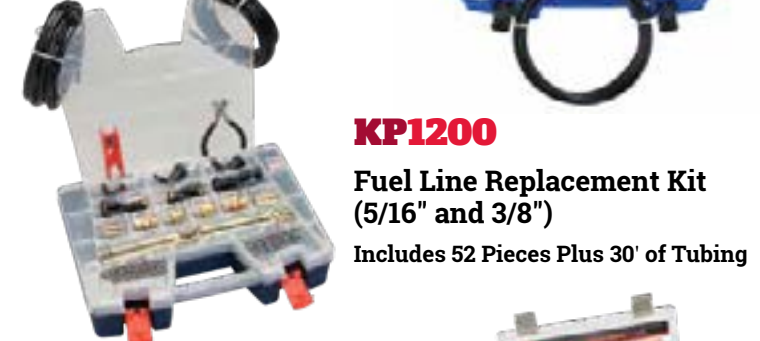
■ Indicates parts included in HL427 Heater Line Repair Kit
■ Reorder quantity
■ Includes dual clamp.

FUEL

With S.U.R.&R., you have a proven and cost effective solution for building and replacing damaged fuel lines for practically any vehicle.

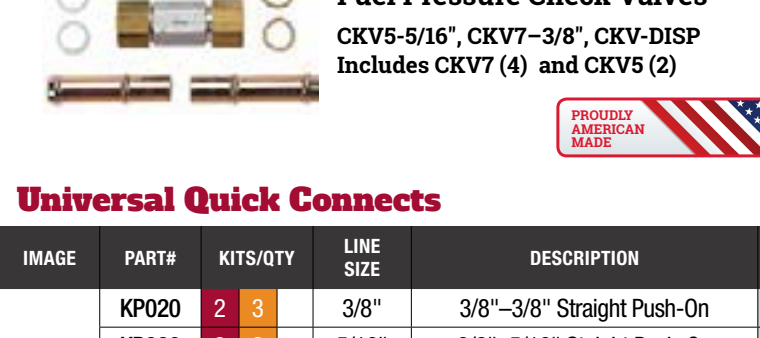
KPI500

DELUXE Fuel Line Replacement Kit (1/4", 5/16" & 3/8") Includes 168 Pieces Plus 75' of Tubing



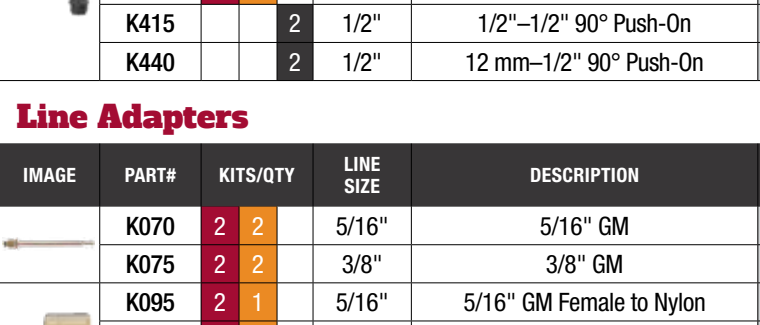
KPI200

Fuel Line Replacement Kit (5/16" and 3/8") Includes 52 Pieces Plus 30' of Tubing



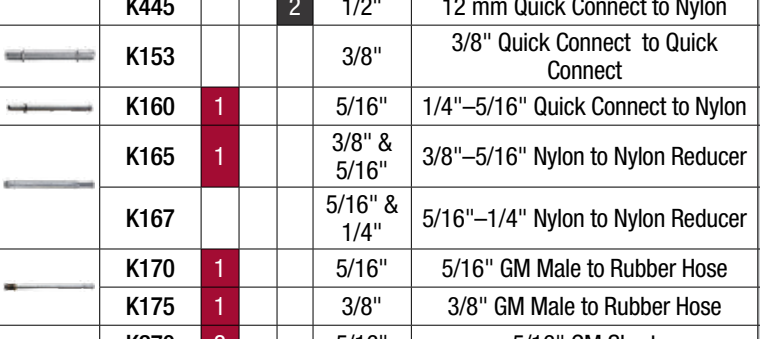
KPI212

1/2" & 12 mm Fuel Line Replacement Kit Includes 34 Pieces Plus 25' of Tubing



CKV5, CKV7, CKV-DISP

Fuel Pressure Check Valves CKV5-5/16", CKV7-3/8", CKV-DISP Includes CKV (4) and CKV5 (2)



Universal Quick Connects

IMAGE	PART#	KITS/ QTY	LINE SIZE	DESCRIPTION	QTY/ PKG
	KP020	2	3/8"	3/8"-3/8" Straight Push-On	2
	KP030	2	5/16"	3/8"-5/16" Straight Push-On	2
	KP035	2	3/8"	5/16"-3/8" Straight Push-On	2
	KP040	2	5/16"	5/16"-5/16" Straight Push-On	2
	K410	2	1/2"	1/2"-1/2" Straight Push-On	2
	K435	2	1/2"	12 mm-1/2" Straight Push-On	2
	KP045	2	5/16"	1/4"-5/16" Straight Push-On	2
	KP120	2	3/8"	5/16"-3/8" 90° Push-On	2
	KP125	2	1/2"	3/8"-3/8" 90° Push-On	2
	KP130	2	5/16"	3/8"-5/16" 90° Push-On	2
	KP135	2	5/16"	5/16"-5/16" 90° Push-On	2
	K415	2	1/2"	1/2"-1/2" 90° Push-On	2
	K440	2	1/2"	12 mm-1/2" 90° Push-On	2

Line Adapters

IMAGE	PART#	KITS/ QTY	LINE SIZE	DESCRIPTION	QTY/ PKG
	K070	2	5/16"	5/16" GM	2
	K075				

SPECIALTY

S.U.R.&R. Provides An Extensive Line Of Specialty Products Which Make Everyday Tasks Simpler For The Technician.

FLS330
Fluid Line Stopper Clamps

TP14316
Tubing Pliers

RM69
Brake Tubing Reamer

PFT409
Pistol Grip Flaring Tool

TS14316
Tubing Straightener & Bending Pliers

TC60
Automatic/Ratcheting Tubing Cutter

TFS203
Temporary Fuel Supply/ Fuel Injection Cleaner

FPT22
DELUXE Fuel Injection Pressure Tester Kit

View all specialty products at surrauto.com/specialty-tools



1-800-390-3996

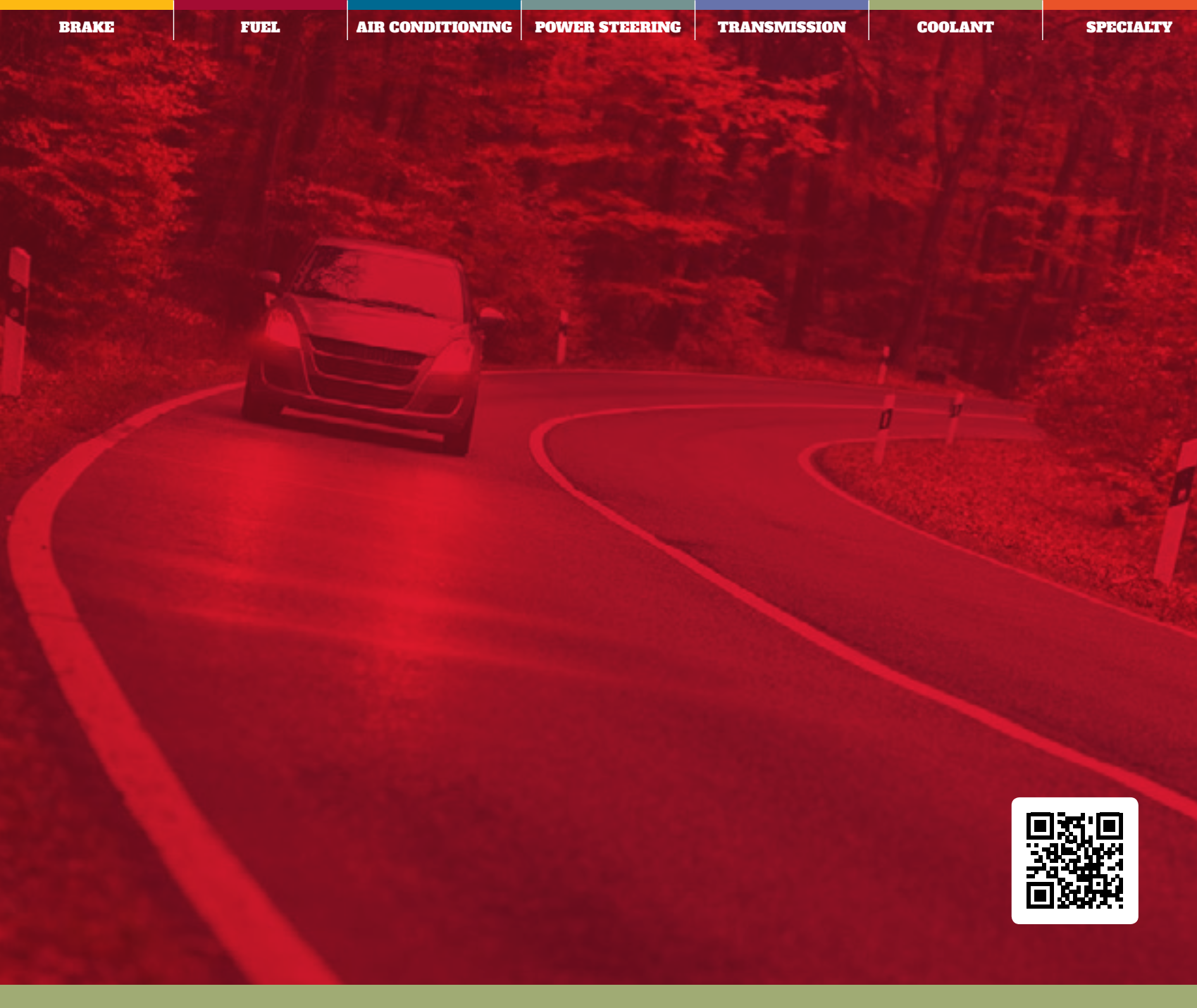
For new products and latest news from S.U.R.&R. go to www.surrauto.com



© 2018 S.U.R.&R. All rights reserved. | PN4012564 | Rev 1 11/18 | S.U.R.&R. is a division of the Husky® Corporation



PARTS REFERENCE GUIDE



BRAKE

COVERS UP TO **95%** OF REPAIRS

BR-EZ316
3/16" Brake Line Replacement Kit
Includes 110 Pieces Plus 25' of UltraBEND® Tubing

Everything Needed To Replace Brake Lines Quickly And Easily Is Included In These Convenient, All-In-One Brake Line Replacement Kits.

BR-EZ14
1/4" Brake Line Replacement Kit
Includes 40 Pieces Plus 25' of UltraBEND® Tubing

- Pays for itself in as little as one job
- Replace numerous brake lines with one kit
- Metric and standard fittings included
- Parts conveniently available, wherever and whenever you need them
- Packaged in durable, portable carrying case

AB25
Air Brake Repair Kit
Includes 32 pieces

Replace Air Brake Fittings Quickly And Easily With This Convenient Kit.

- Features push-to-connect composite fittings in 25 popular styles.
- Individual pieces available for reorder
 - FMVSS (DOT) and SAE compliant
 - Pre-applied thread sealant for easy installation
 - Composite body: Saves weight, UV resistant, vibration resistant, excellent chemical resistance

ULTRABEND®

Brake Line Tubing

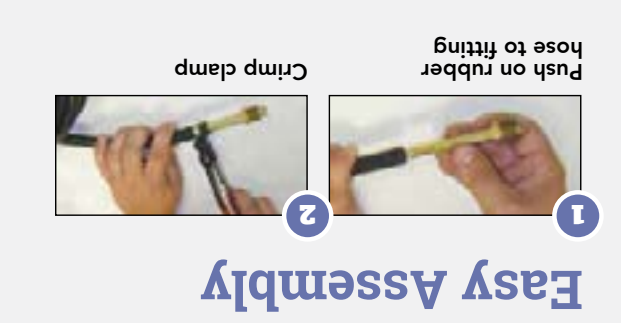
To design the best brake line tubing, we had to bend the rules

Flexible UltraBEND® tubing makes routing and installation simple.

NEW!
Thick, heavy foot for easy measurement.

- Easy bending, simple routing
- No bending tools required
- Smooth flares create better fitting seals
- Conforms to SAE specifications, pressure-rated up to 3,000 PSI
- Cuts labor time by more than 50%
- Triple annealed for easy bending
- Rigorously tested—highest quality
- Available in 3/16", 1/4", 5/16", 3/8" sizes

NO KINKING	BETTER FLARING	A BETTER CHOICE
<p>FEEL The Difference</p> <p>S.U.R.&R. (USA Made)</p> <p>OTHERS (Imported)</p> <p>NO KINK Thicker walls prevent kinking!</p> <p>KINK Thinner walls more likely to kink!</p>	<p>SEE The Difference</p> <p>S.U.R.&R. (USA Made)</p> <p>OTHERS (Imported)</p> <p>THICKER WALLS</p> <p>CONSISTENT FLARES</p>	<p>KNOW The Difference</p> <p>Ryan Zehner: Zehner's Auto Service, Akron, OH</p> <p>"I've used S.U.R.&R.'s brake line for over five years and tried others as well. There's no comparison. Whether you're flaring, routing, or bending, S.U.R.&R. is simply the best."</p> <p>PROUDLY AMERICAN MADE</p>



Easy Assembly



Make A New Line Or Repair A Leak In As Little As 5 Minutes

- Use to replace or make repairs on both 5/16" & 3/8" lines
- Immediate part availability, easier to install than OE lines
- Hundreds of domestic and foreign applications
- Perfect for damaged lines including rust, cracks, pinholes, and more
- Triple-walled rubber hose for safety and durability; pressures rate up to 250 PSI and temperatures up to 350° F



TR555
DELUXE Transmission Oil Cooler Line Repair Kit
Includes 78 Pieces Plus 15' of Hose
Use With 5/16" & 3/8" Lines

INSTALLER FRIENDLY

TRANSMISSION



Easy Installation

Perfect For Vans, SUVs And Other Vehicles With Failed Rear Heater Lines And Systems.

SAVES MONEY



Tackle Different Repairs

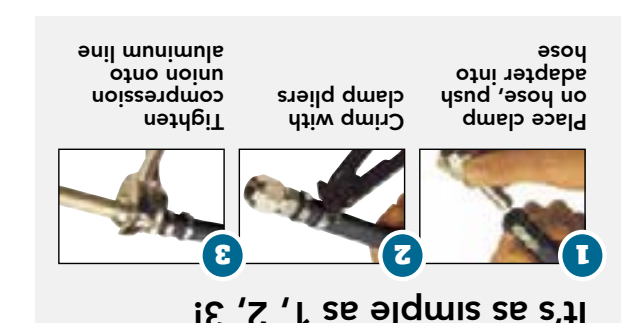
HL427
Heater Line Repair Kit
Includes 12 Pieces Plus 10' of Hose
Use with 1/2", 13 mm, 5/8" and 16 mm (3/4") also available, sold separately.

PS1000
Power Steering Hose Repair Kit
Includes Two Hoses (6", 12", 18", 24" & 30") and Two 5/16" Ferrules (18", 24" & 30"). Two Coils of ULTRABEND®, and Most Popular Threaded Fittings
Use With 3/8" or 5/16" Lines

PS2000
Power Steering Hose Replacement Kit
Includes Five Hoses (6", 12", 18", 24" & 30"), Two Coils of ULTRABEND®, and Most Popular Threaded Fittings
Use With 3/8" or 5/16" Lines

Repair and Replace High And Low Pressure Lines. **100% COVERS UP TO 6,000 PSI**

POWER STEERING



Assemble By Hand

- AC90M**
METRIC A/C Compression Block Off Kit
Includes 8, 10, 12, 15, 16 and 19 mm sizes
- AC80**
A/C Compression Block Off Kit
Includes 3/8", 1/2", 5/8" and 3/4" sizes
- AC60M**
METRIC A/C Compression Union Kit
Includes 8, 10, 12, 15, 16 and 19 mm sizes
- AC40**
A/C Compression Union Kit
Includes 3/8", 1/2", 5/8" and 3/4" sizes



Fast, Long-Lasting A/C Repairs for High and Low Pressure Lines

- AC1387**
DELUXE A/C Line Repair Kit
Includes 42 Pieces Plus 20' of Hose
Use With 3/8", 1/2", 5/8", and 3/4" sizes

Make Instant Repairs To A/C Lines On Hundreds Of Vehicles. Repair Damaged Rubber And Aluminum Lines Including Pinholes, Cracks, Kinks, And More.

100% COVERS UP TO 6,000 PSI

AIR CONDITIONING



Easy Installation

- KP1200**
Fuel Line Replacement Kit (5/16" & 3/8")
Includes 52 Pieces Plus 30' of Tubing
- KP1212**
Fuel Line Replacement Kit (1/2" & 12 mm)
Includes 94 Pieces Plus 25' of Tubing

With S.U.R.&R., You Have A Proven And Cost Effective Solution For Repairing And Replacing Damaged Fuel Lines For Practically Any Vehicle.

- Save up to 70% vs. OEM fuel lines
- No special insertion tools required; reduces labor time
- Perfect for replacing lines which are costly or obsolete
- Safe for use with multiple fuel types including gas, ethanol and diesel
- Works with domestic & foreign vehicles
- Nylon lines hold up to 200 PSI

COVERS UP TO 97% OF REPAIRS

FUEL



Universal Quick Connects

- Attach nylon line to fitting
- Push on
- Crimp clamp
- Typical installations can be done in under 5 minutes in just 3 simple steps.
- No special disconnect tools required
- Works with domestic & foreign vehicles



KP1500
DELUXE Fuel Line Replacement Kit (1/4", 5/16" & 3/8")
Includes 168 Pieces Plus 75' of Tubing

FUEL