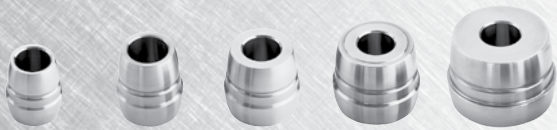


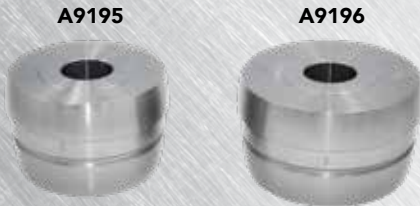
**AMMCO STYLE ADAPTER KITS**



A9921 A9922 A9192 A9193 A9194

A9232 Kit

PART#	QTY	DESCRIPTION
A9232	Kit	• 1" Arbor Double Taper Truck Kit. 5 Pieces.
<b>FEATURES</b>		
For Mounting Hubbed Drums & Rotors on 1" Arbors. Covers Passenger Cars & Light Trucks. Double Ended Adapter 1" Bore Range 1.32" - 2.89". OEM/Ammco: 9232.		
A9921	• Double Ended Adapter	1.332" - 1.670"
A9922	• Double Ended Adapter	1.362" - 1.710"
A9192	• Double Ended Adapter	1.711" - 2.073"
A9193	• Double Ended Adapter	2.074" - 2.440"
A9194	• Double Ended Adapter	2.441" - 2.89"



A9195 A9196

A9233 Kit

PART#	QTY	DESCRIPTION
A9233	Kit	• Double Ended Adapter 1" Bore Range: 2.828 - 3.560 Truck Kit. 2 Pieces.
<b>FEATURES</b>		
For Mounting Hubbed Drums & Rotors on 1" Arbors. Range: 2.828" - 3.560". Fits Ammco, Hunter, Accu-Turn, Ranger, and any other brake lathe with a 1" arbor. OEM/Aftermarket Interchanges: 9233, 909233, 9195, 909195, 9196, 909196.		
A9195	• Double Taper Adapter	2.828" - 3.185"
A9196	• Double Taper Adapter	3.203" - 3.560"



A9199 Kit

PART#	QTY	DESCRIPTION	
A9199	Kit	• Light Truck Adapter Kit. 6 Pieces.	
<b>FEATURES</b>			
Applications for 3/4 Ton & 1 Ton Trucks, GMC, Chevrolet, Jeep, IH Scout & Ford Trucks.			
A3577	2-pk	• Bell Clamp/Alignment Cup-Small	6.25" x 1"
A3578	1-pk	• Bell Clamp/Alignment Cup	7.25" x 1"
A3590	1-pk	• Spring	2.5" Dia. x 4.125"
A4732	1-pk	• Centering Cone	4.875" x 5.50"
A4778	1-pk	• Centering Cone	3.875" x 4.438"



A9299 Kit

PART#	QTY	DESCRIPTION	
A9299	Kit	• Combination Light Truck Adapter Kit. 7 Pieces.	
<b>FEATURES</b>			
Applications for 3/4 Ton & 1 Ton Trucks, GMC, Chevrolet, Jeep, IH Scout & Ford Trucks.			
A3577	2-pk	• Bell Clamp/Alignment Cup-Small	6.25" x 1"
A3578	1-pk	• Bell Clamp/Alignment Cup	7.25" x 1"
A3590	1-pk	• Spring	2.5" Dia. x 4.125"
A4732	1-pk	• Centering Cone	4.875" x 5.50"
A4778	1-pk	• Centering Cone	3.875" x 4.438"
A4779	1-pk	• Centering Cone	4.124" x 4.969"

