

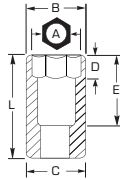


3/8" DRIVE DEEP IMPACT SOCKETS - 6 POINT



- ▶ Radius-corner socket design
- ▶ Engages flats for better grip
- ▶ Improves the ability to turn worn or rounded fasteners

- ▶ Proto® 6 Point Impact Sockets are ideal for use on stubborn or damaged fasteners, and also on fasteners made from soft materials.
- ▶ Socket size stamped on tool for easy identification.
- ▶ Side locking hole.



INCH	6	Nut End Outside Diameter (in) (B)	Drive End Outside Diameter (in) (C)	Nut Depth (in) (D)	Bolt Clearance Depth (in) (E)	Overall Length (in) (L)	Weight (lbs)
1/4	J7708H*	7/16	11/16	9/32	2-1/4	2-3/4	0.21
9/32	J7709H*	31/64	11/16	5/16	2-1/4	2-3/4	0.18
5/16	J7710H	33/64	11/16	21/64	2-1/4	2-3/4	0.20
11/32	J7711H	35/64	11/16	11/32	2-1/4	2-3/4	0.19
3/8	J7712H	19/32	11/16	3/8	2-1/4	2-3/4	0.19
7/16	J7714H	11/16	11/16	27/64	2-1/4	2-3/4	0.17
1/2	J7716H	3/4	3/4	15/32	2-1/4	2-3/4	0.21
9/16	J7718H	13/16	13/16	11/16	2-1/4	2-3/4	0.22
5/8	J7720H	29/32	29/32	11/16	2-1/4	2-3/4	0.29
11/16	J7722H	1	1	11/16	2-1/4	2-3/4	0.34
3/4	J7724H	1-1/16	1-1/16	43/64	2-1/4	2-3/4	0.38
13/16	J7726H*	1-13/64	1-13/64	13/16	2-1/8	2-3/4	0.53
7/8	J7728H	1-9/32	1-9/32	13/16	2-1/8	2-3/4	0.59
15/16	J7730H	1-23/64	1-23/64	13/16	2-1/8	2-3/4	0.66
1	J7732H*	1-1/2	1-1/2	13/16	2-1/8	2-3/4	0.85

*This size not covered under ASME Standards

ASME B107.110-2012

MM	6	Nut End Outside Diameter (in) (B)	Drive End Outside Diameter (in) (C)	Nut Depth (in) (D)	Bolt Clearance Depth (in) (E)	Overall Length (in) (L)	Weight (lbs)
6	J7006M*	27/64	11/16	9/32	2-1/4	2-3/4	0.19
7	J7007M*	31/64	11/16	5/16	2-1/4	2-3/4	0.20
8	J7008M	33/64	11/16	5/16	2-1/4	2-3/4	0.19
9	J7009M	37/64	11/16	3/8	2-1/4	2-3/4	0.20
10	J7010M	5/8	11/16	3/8	2-1/4	2-3/4	0.19
11	J7011M	11/16	11/16	13/32	2-1/4	2-3/4	0.18
12	J7012M	3/4	3/4	7/16	2-1/4	2-3/4	0.20
13	J7013M	3/4	3/4	15/32	2-1/4	2-3/4	0.22
14	J7014M	13/16	13/16	1/2	2-1/4	2-3/4	0.22
15	J7015M	55/64	55/64	11/16	2-1/4	2-3/4	0.25
16	J7016M	29/32	29/32	11/16	2-1/4	2-3/4	0.29
17	J7017M	1	1	11/16	2-1/4	2-3/4	0.37
18	J7018M	1-1/32	1-1/32	11/16	2-1/4	2-3/4	0.38
19	J7019M	1-1/16	1-1/16	11/16	2-1/4	2-3/4	0.38
20	J7020M	1-7/64	1-7/64	25/32	2-1/4	2-3/4	0.42
21	J7021M	1-5/32	1-5/32	25/32	2-1/4	2-3/4	0.46
22	J7022M	1-13/64	1-13/64	51/64	2-1/4	2-3/4	0.49
23	J7023M	1-1/4	1-1/4	51/64	2-1/4	2-3/4	0.53
24	J7024M	1-19/64	1-19/64	59/64	2-1/4	2-3/4	0.58

*This size not covered under ASME Standards

ASME B107.110-2012

3/8" DRIVE IMPACT SOCKETS

